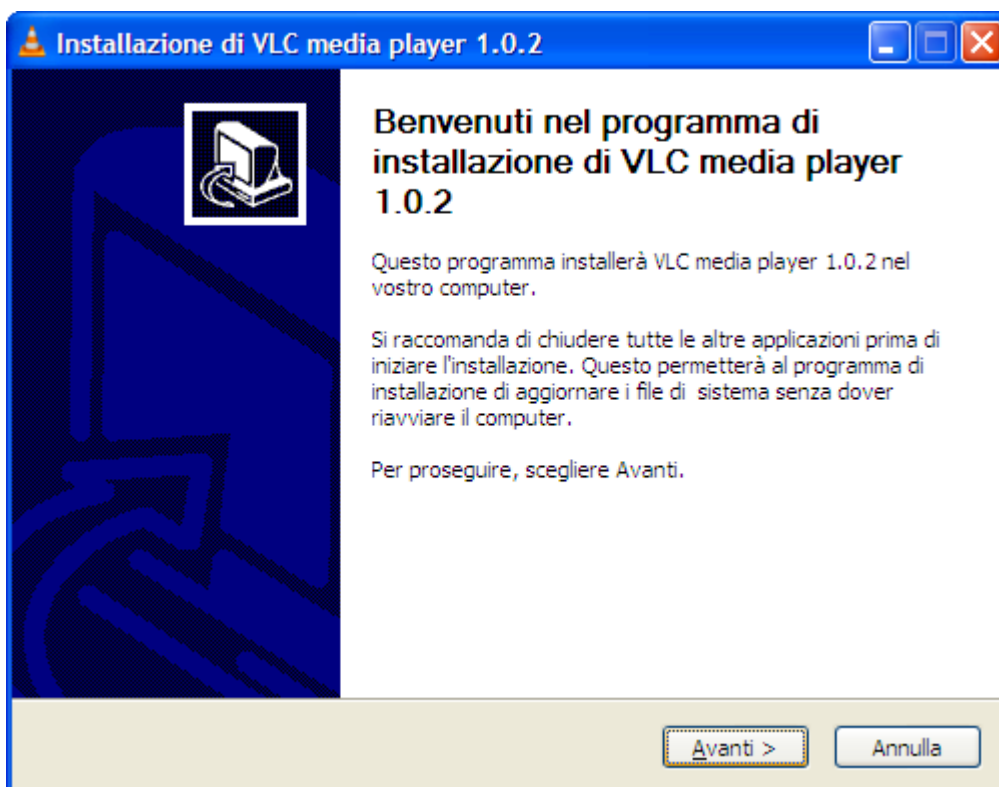
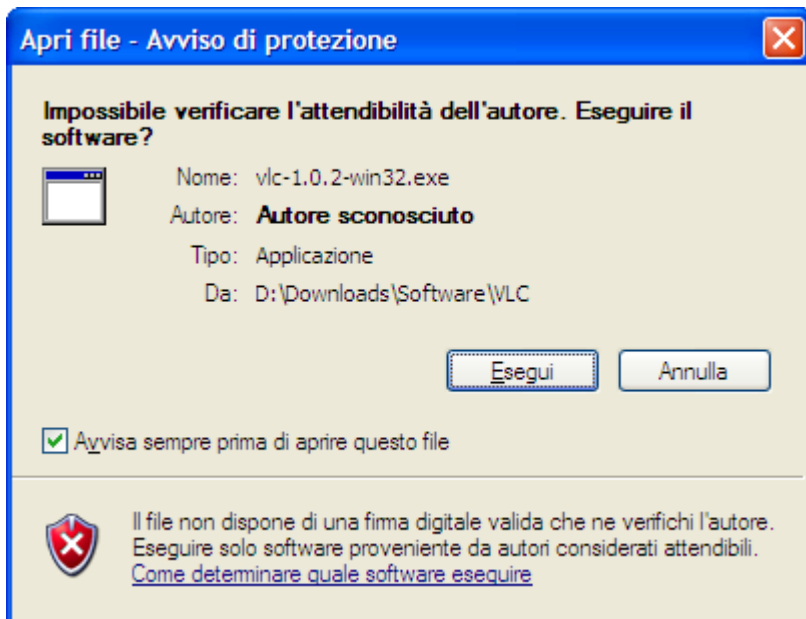
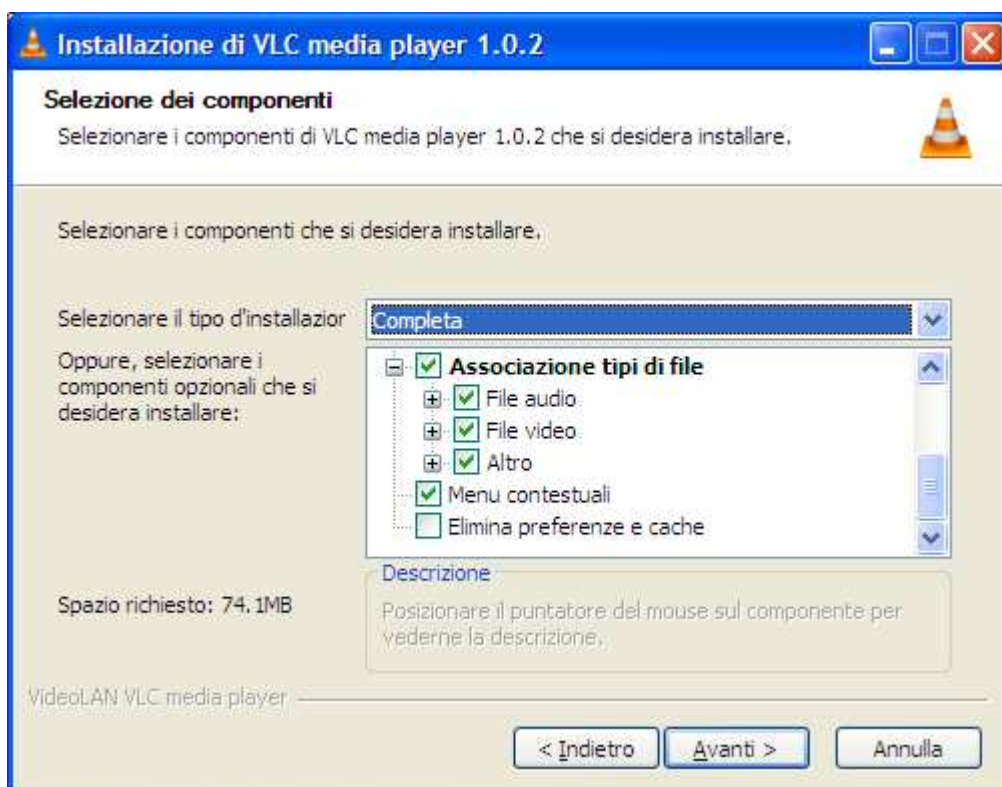
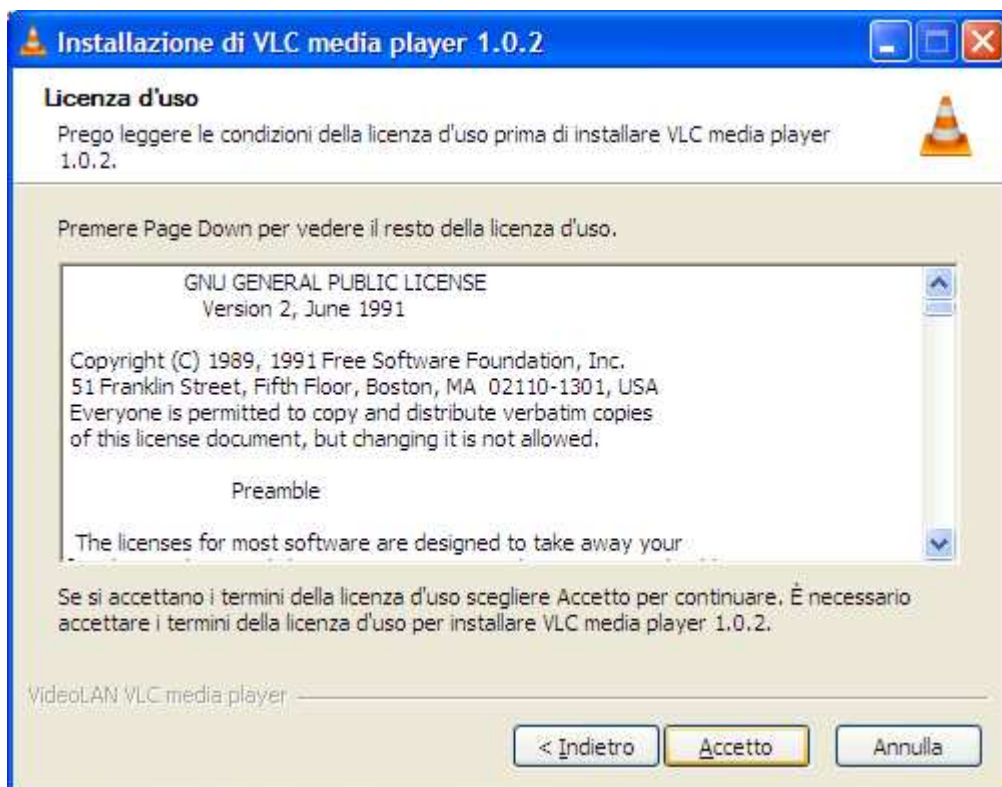
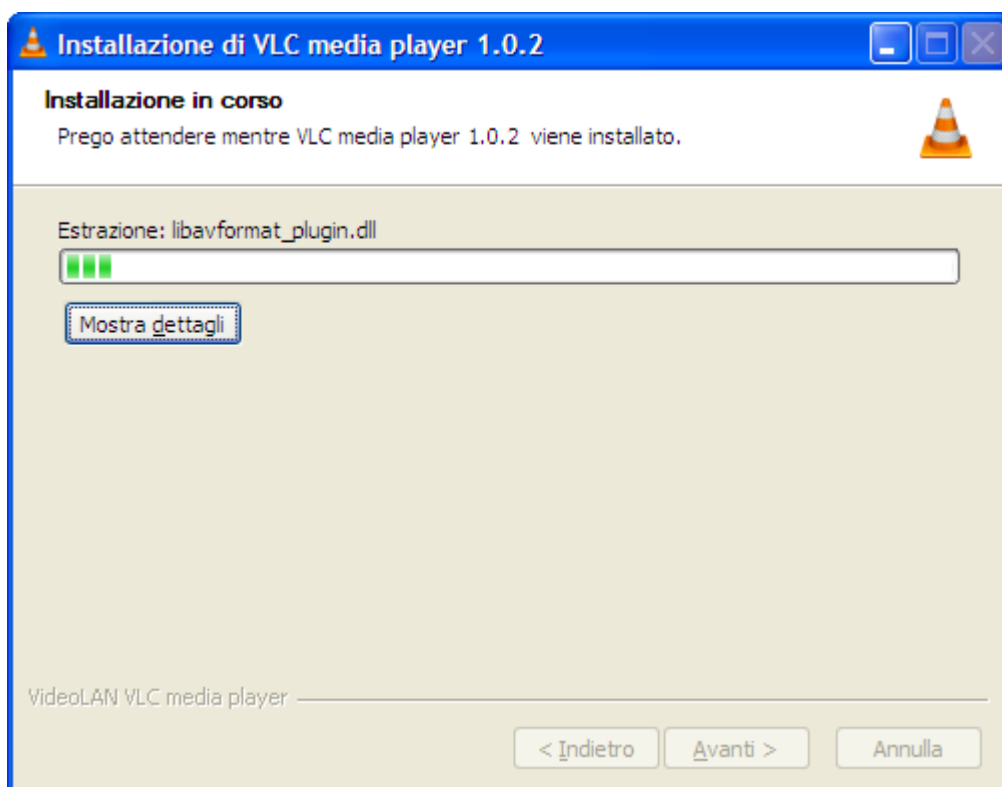
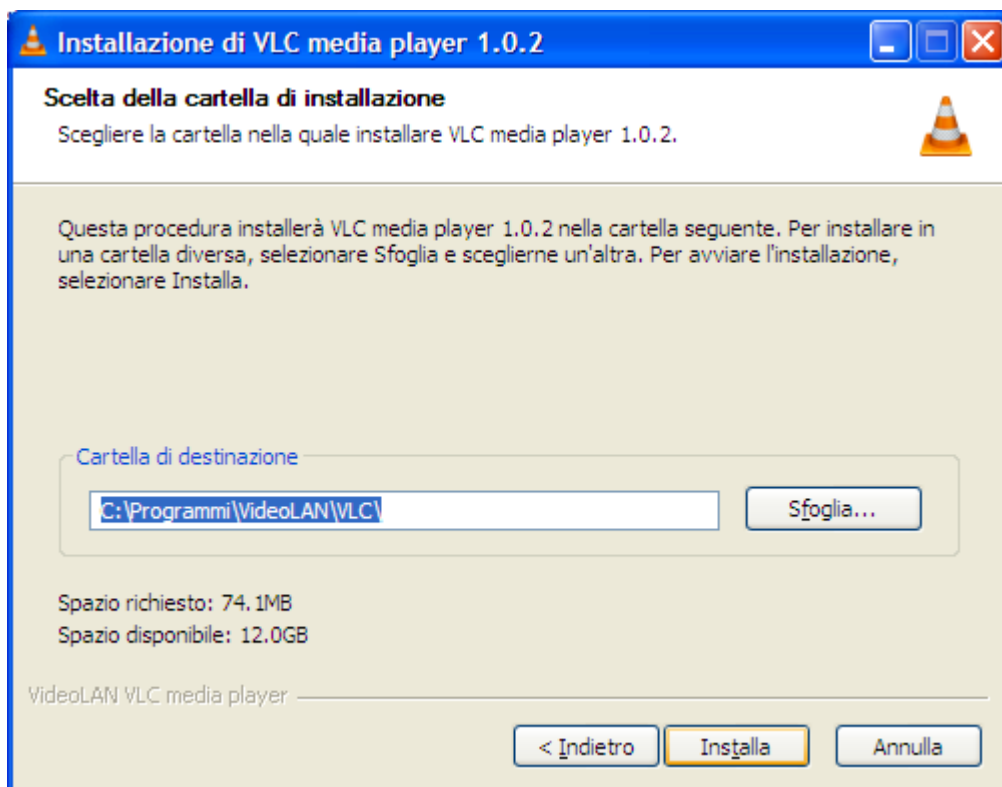


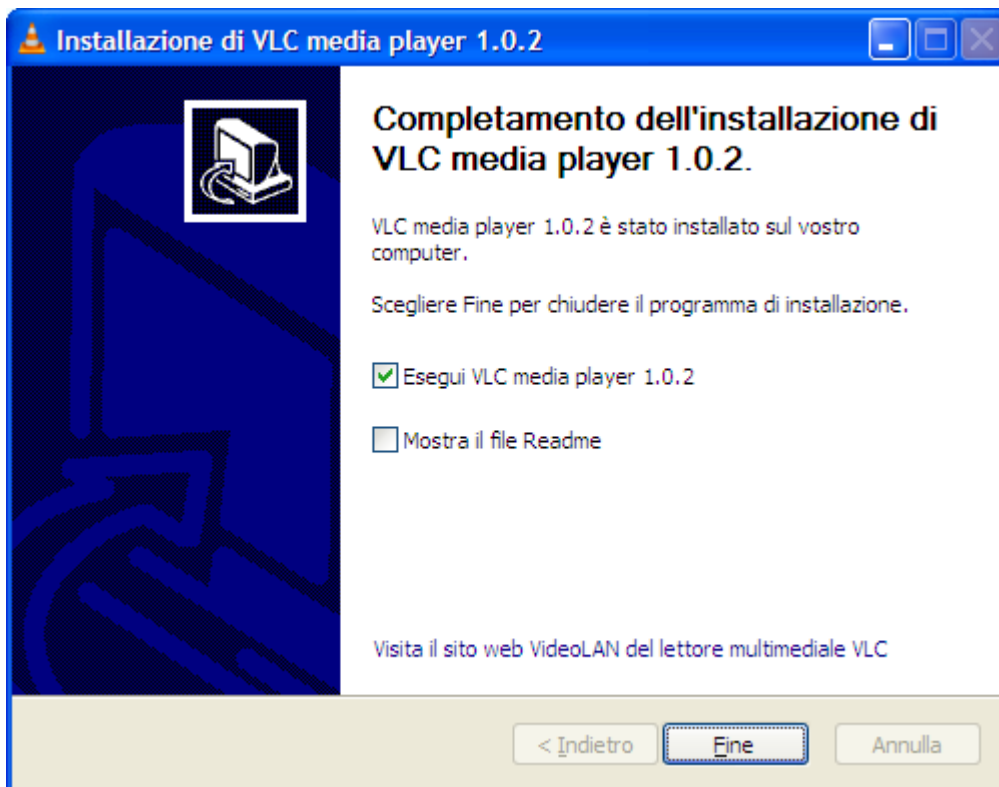
Download VideoLan:

<http://www.videolan.org/mirror-geo.php?file=vlc/1.0.2/win32/vlc-1.0.2-win32.exe>

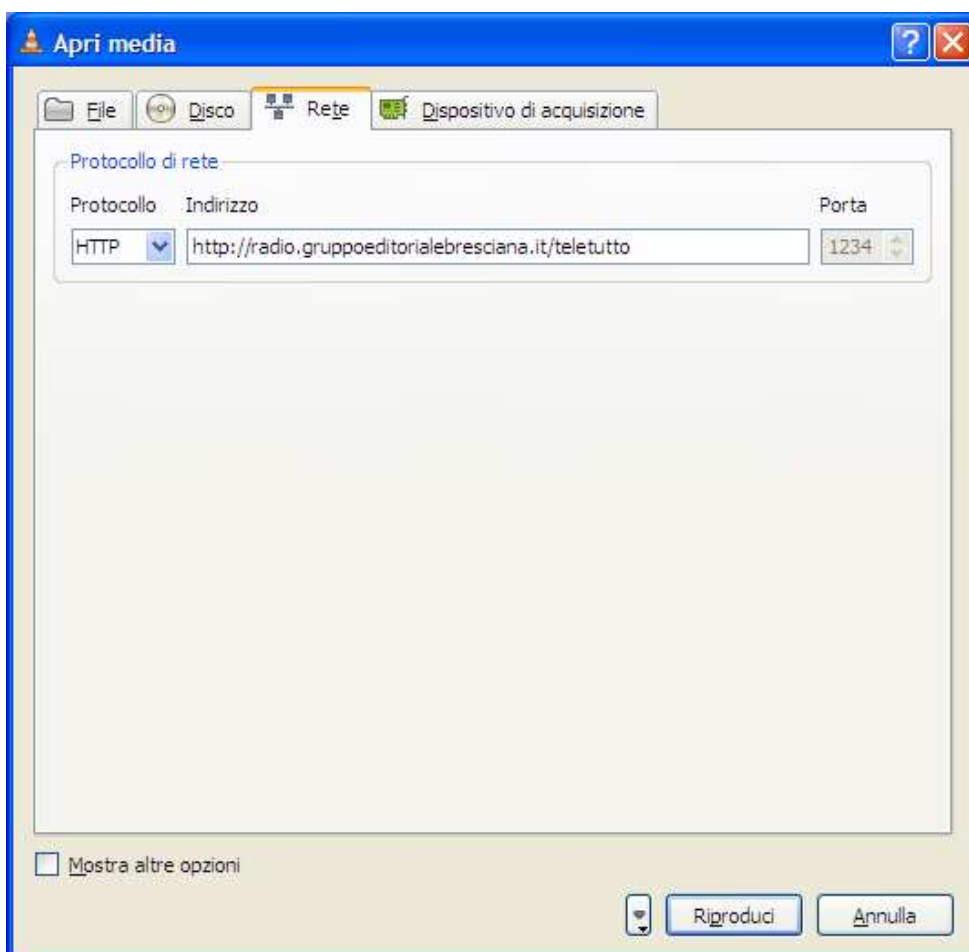






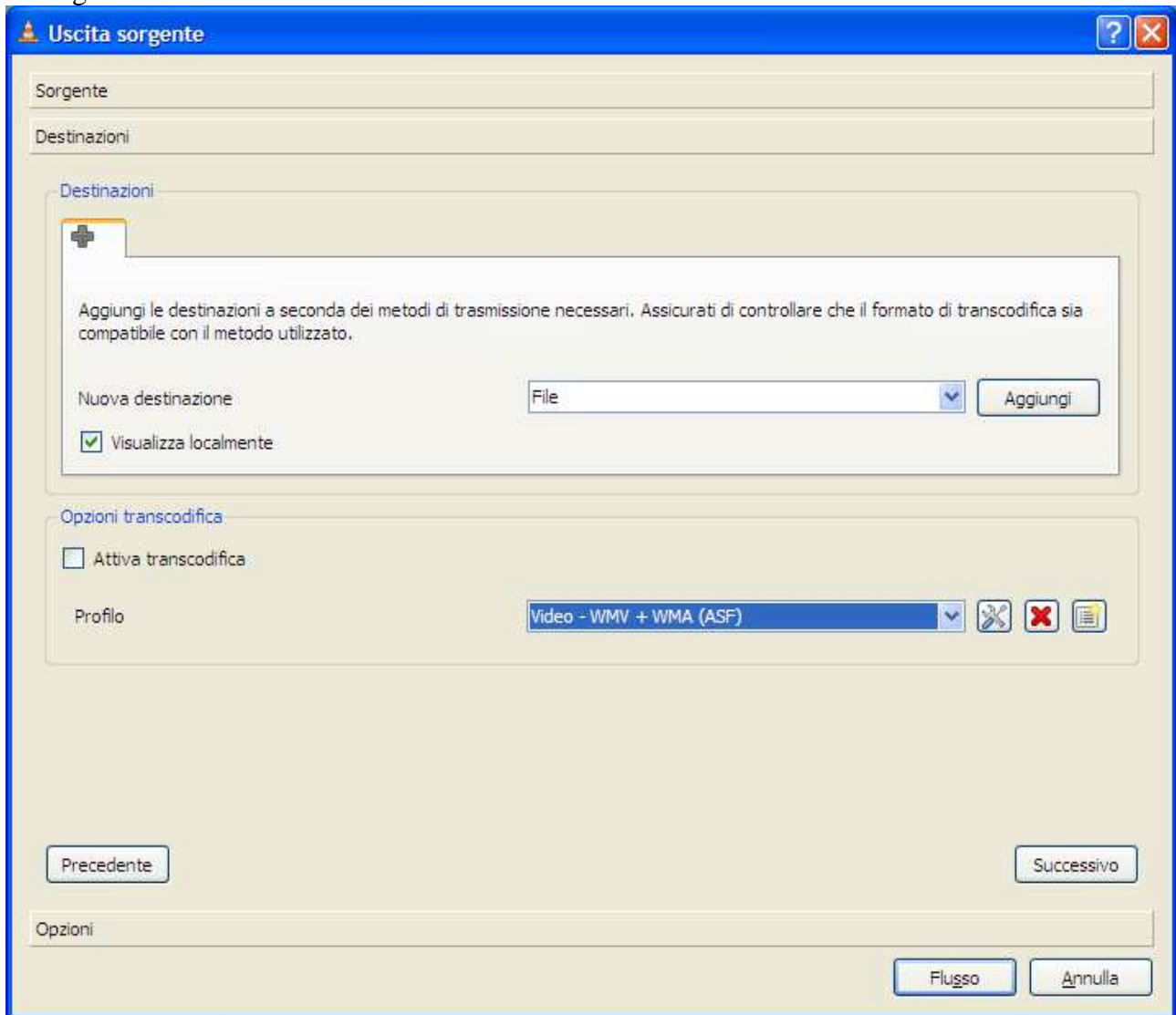


Una volta partita l'applicazione, dal Menù scegliere:  
Media - Apri flusso di rete

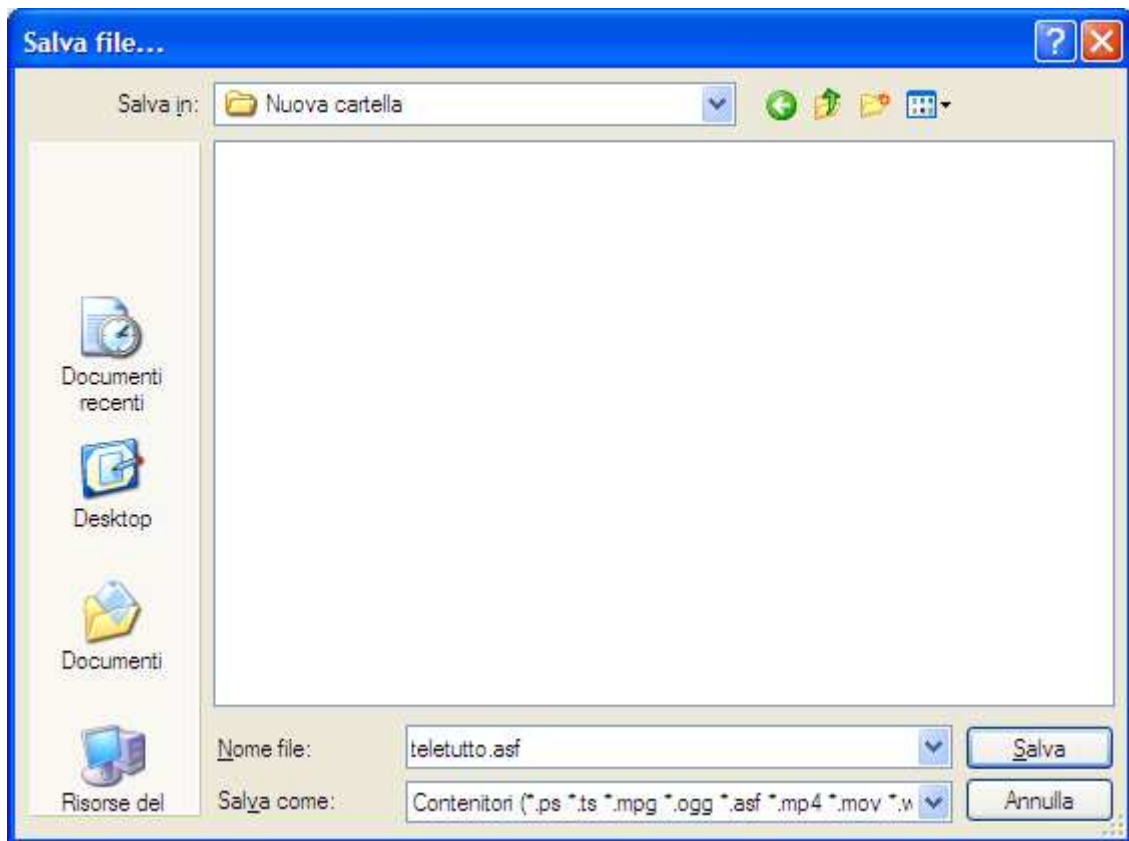


inserire i parametri sopra riportati poi premere ALT + S

Si aprirà la maschera “Uscita Sorgente”... selezionare “Destinazioni” e configurare come da immagine:



cliccare su Aggiungi (a destra di “File”) ed inserire il percorso del file di salvataggio che conterrà il filmato (ad es: teletutto.asf)... ricordandosi di specificare anche l'estensione .asf:



Cliccare su Salva e poi su Flusso.. partirà la visualizzazione e registrazione.