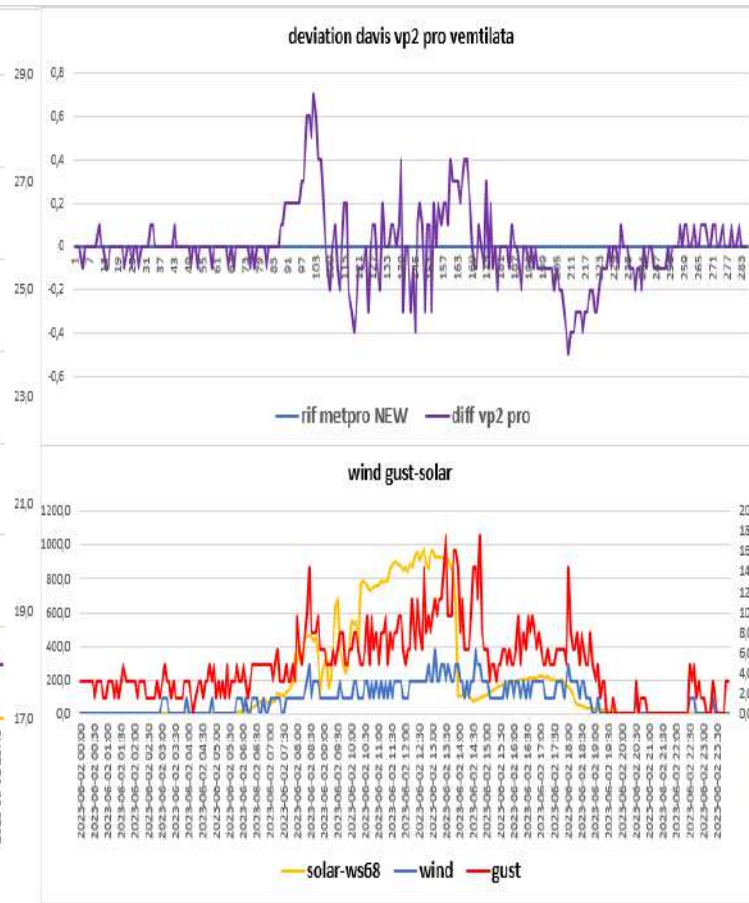
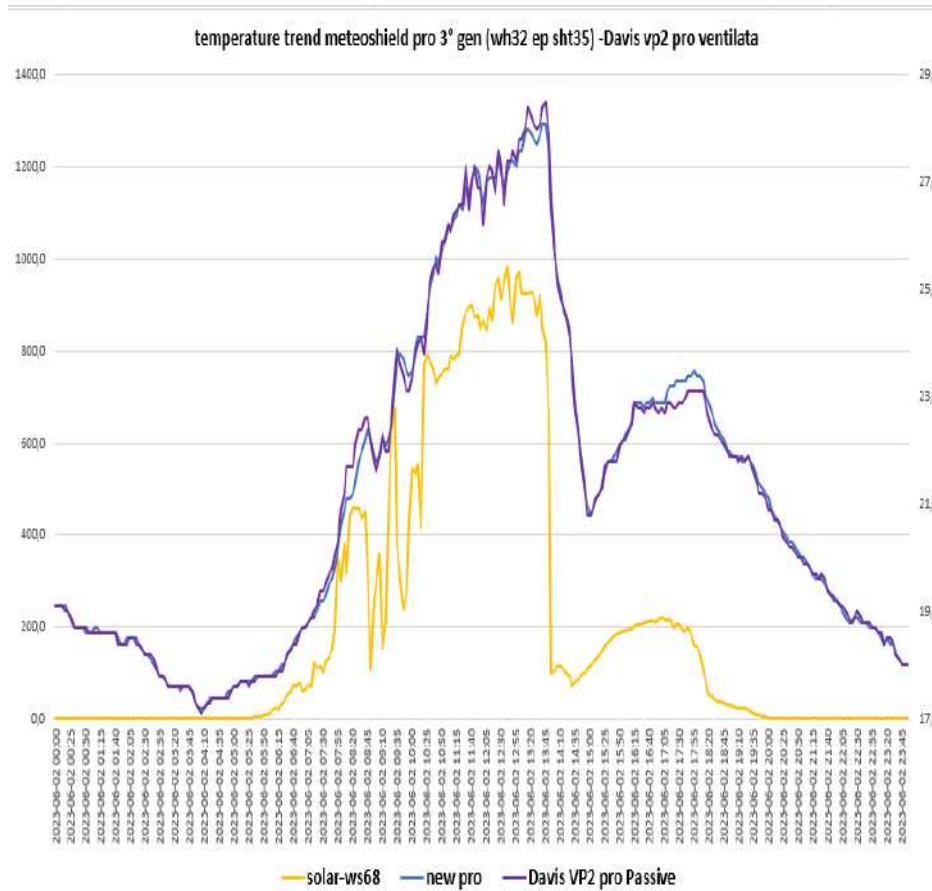
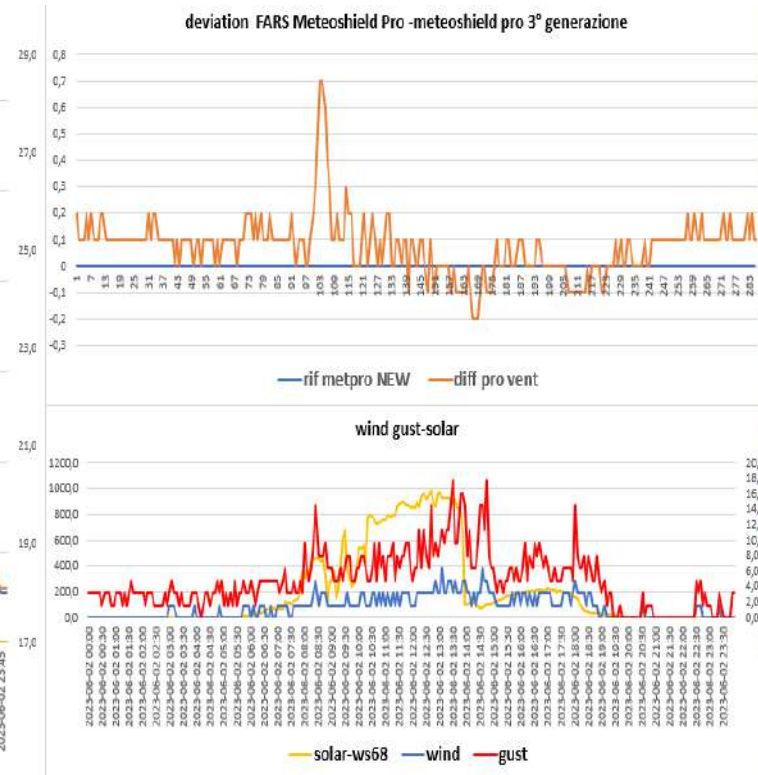
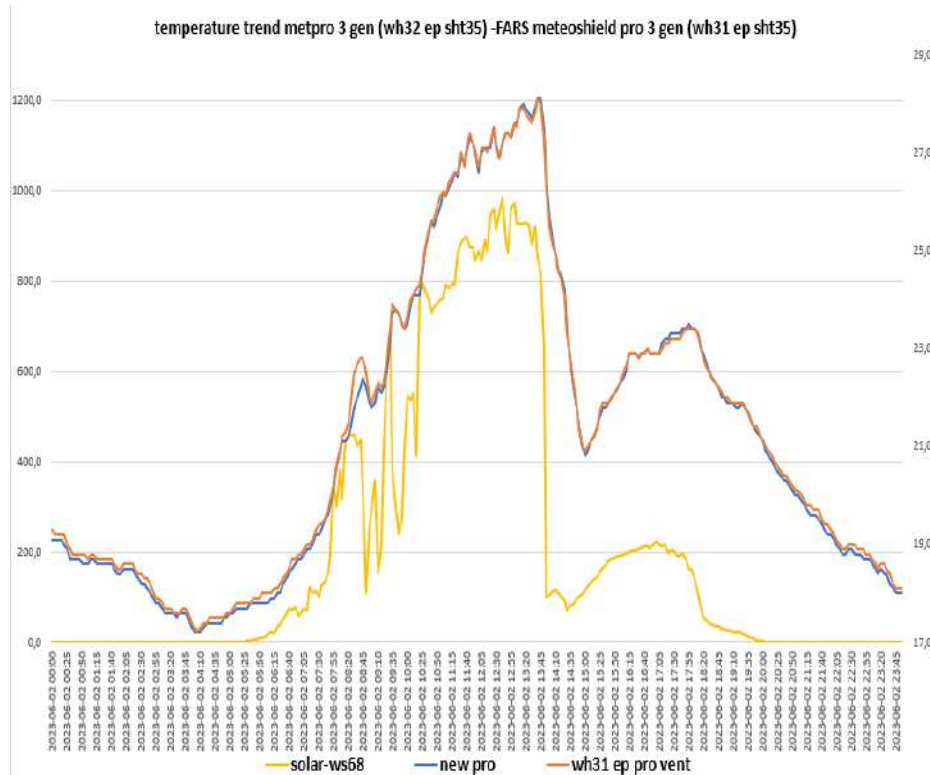


## SCREEN TREND OF 02-06-2023

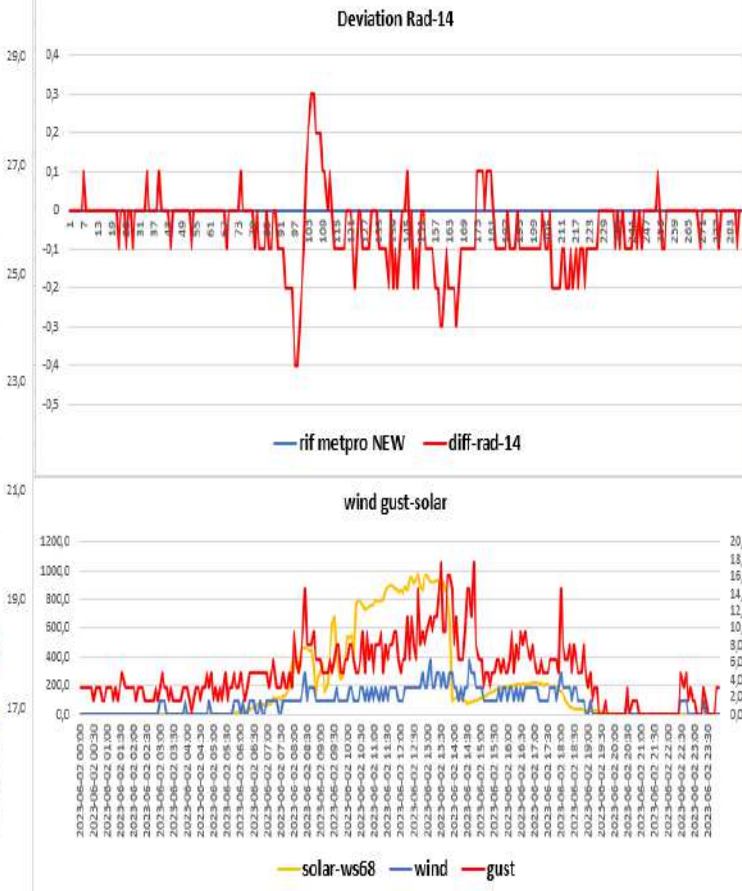
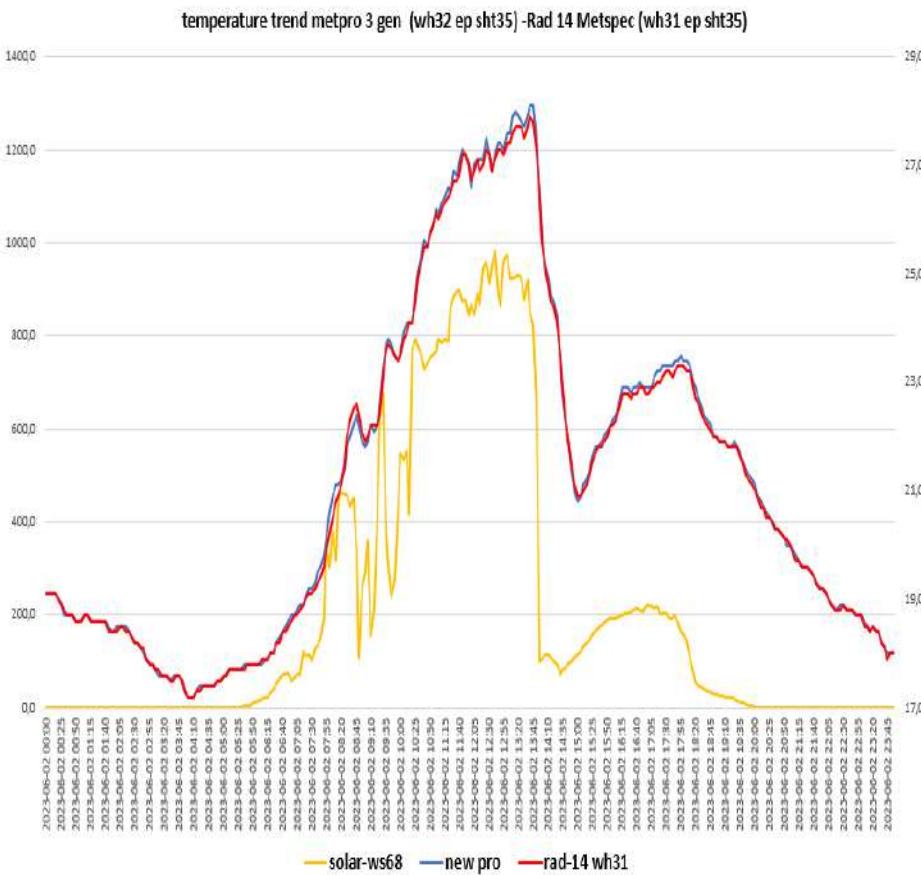
Davis vp2 pro- Metpro old (Probe sensor wh32EP ecowitt)



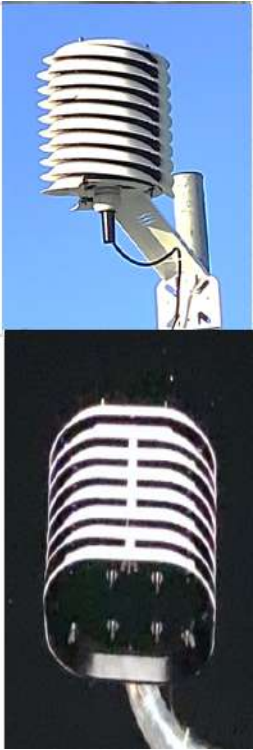
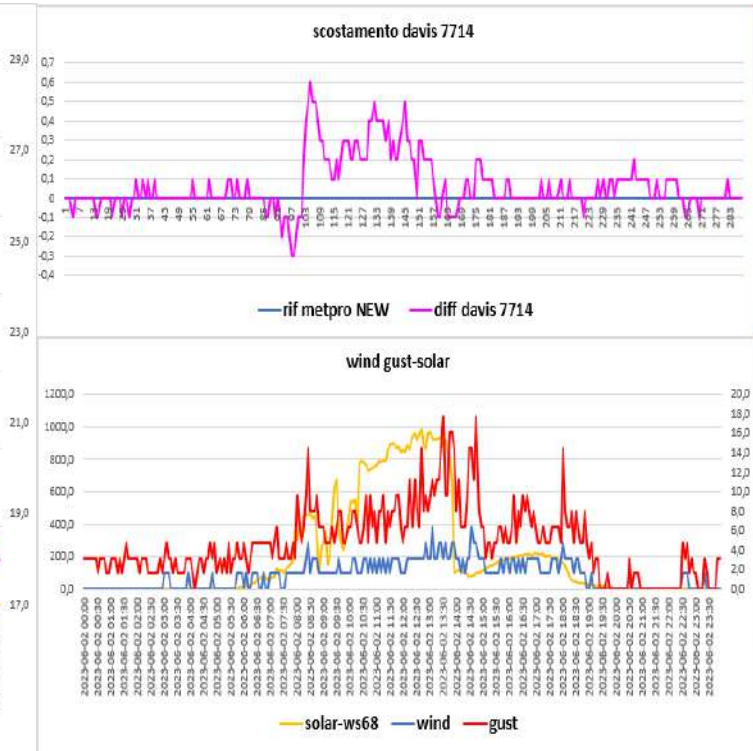
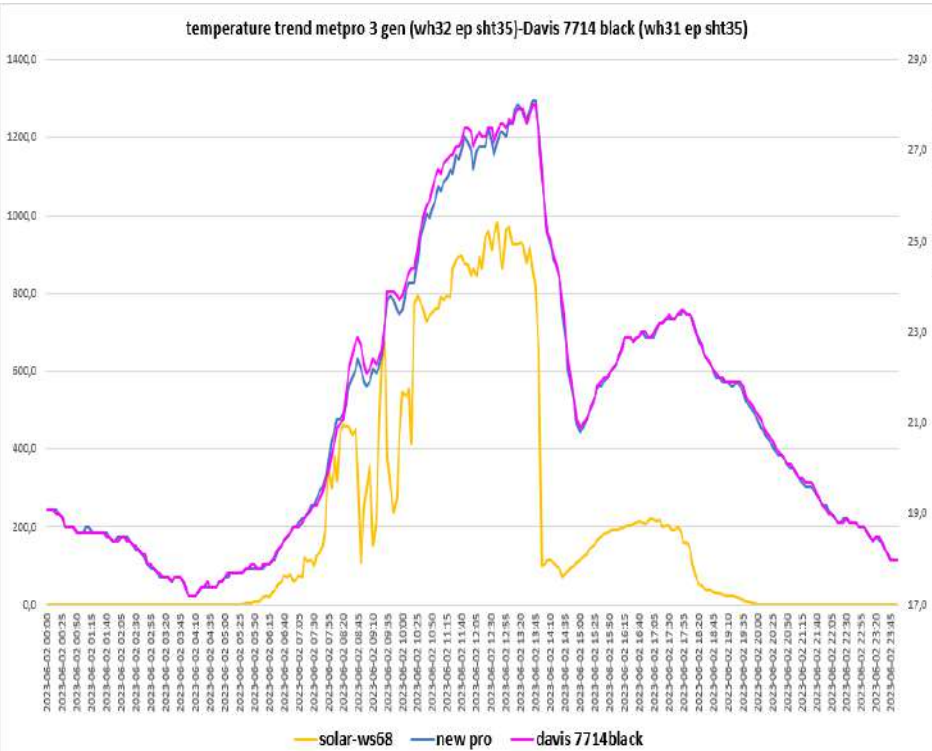
## Metpro NEW (Probe sensor wh32EP ecowitt)- FARS meteoshield pro 3° gen (Probe sensor wh31EP ecowitt)



**Metpro NEW (Probe sensor WH32 EP ecowitt) – Rad14 Metspec (Probe sensor wh31EP-WH31ep ecowitt)**

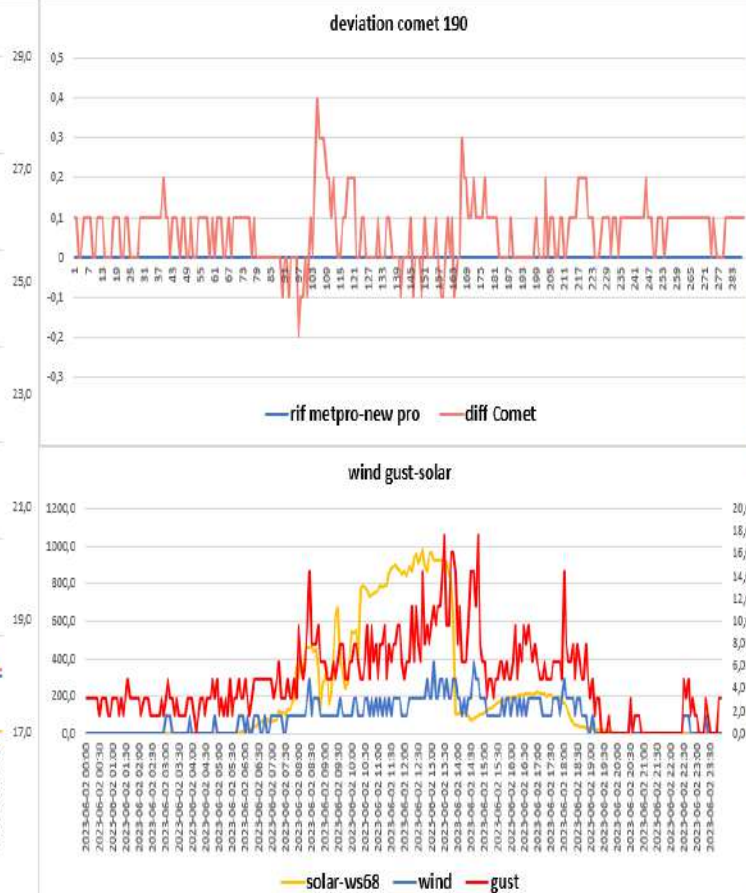
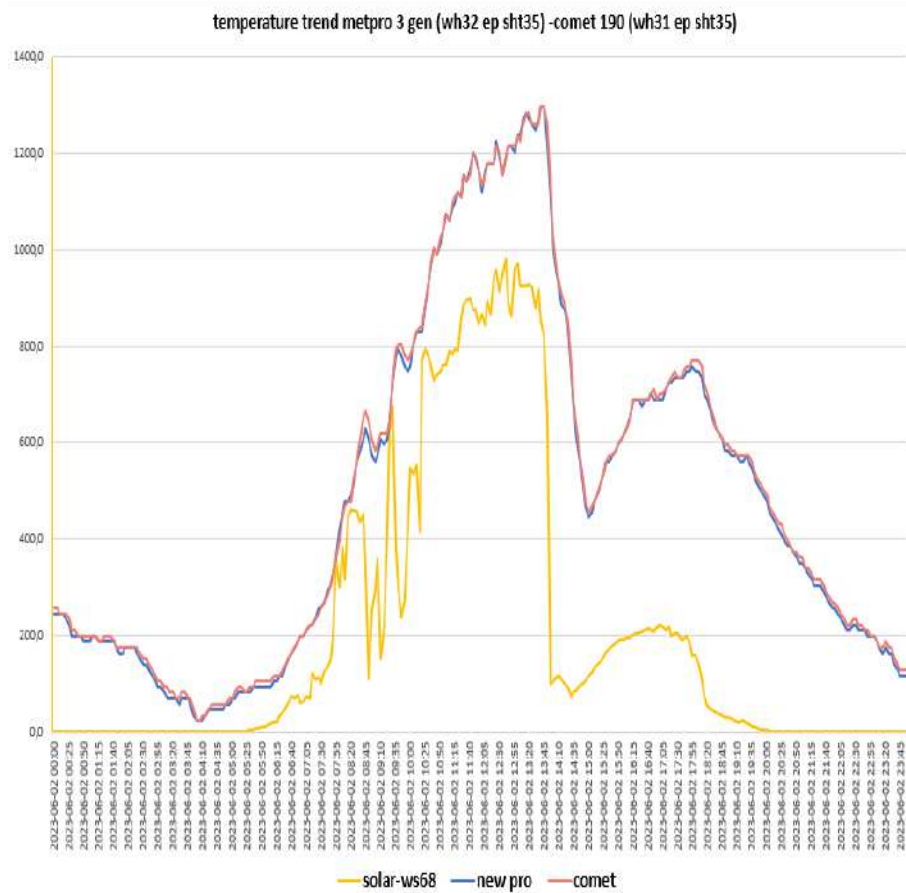


Metpro NEW (Probe sensor wh32 EP ecowitt)-DAVIS 7714 Black(Probe sensor wh31 EP ecowitt)-

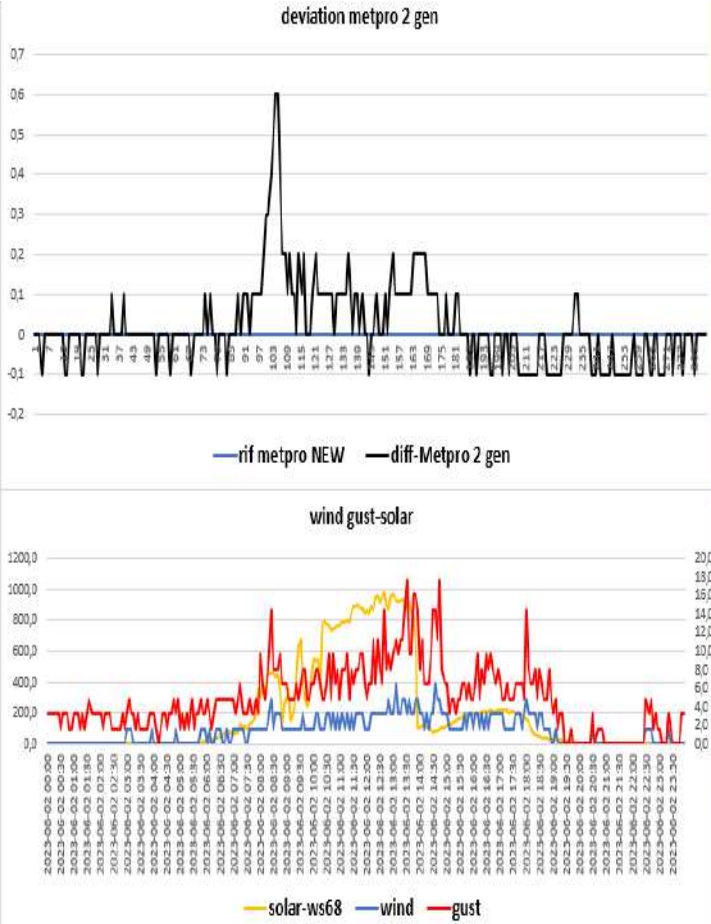
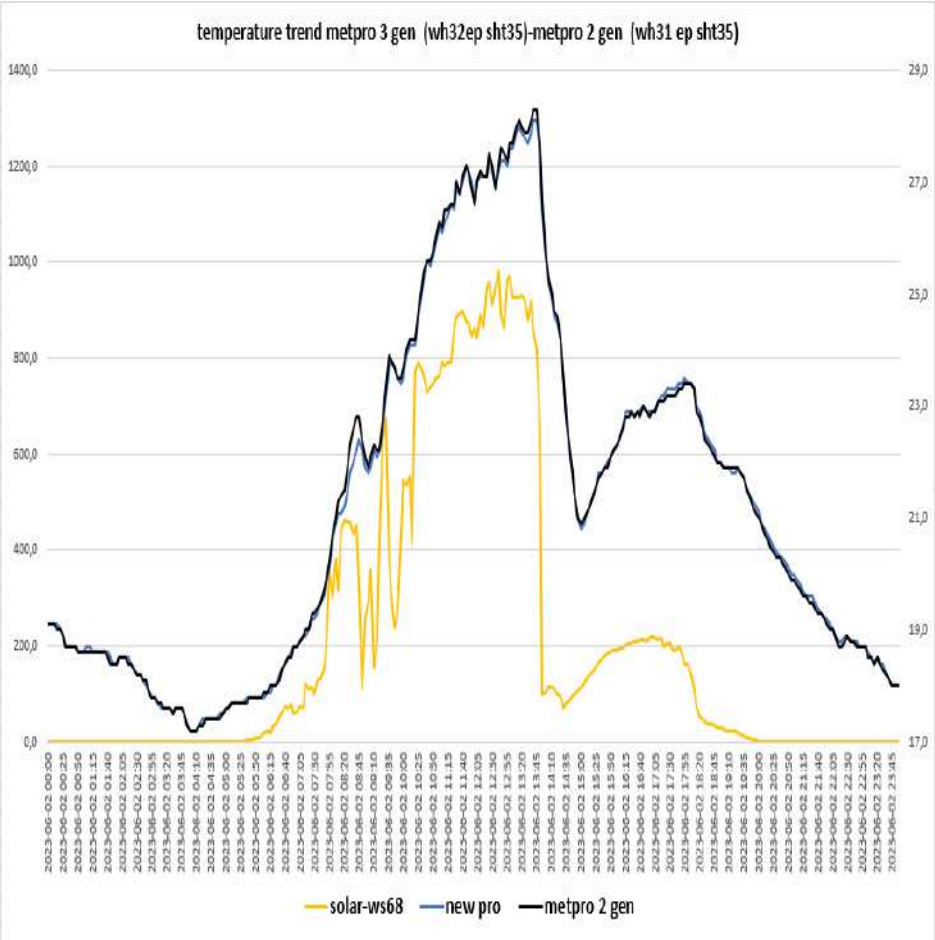




# NEW PRO BARANI (probe sensor wh32 EP ecowitt)- COMET 190 probe sensor wh31 EP



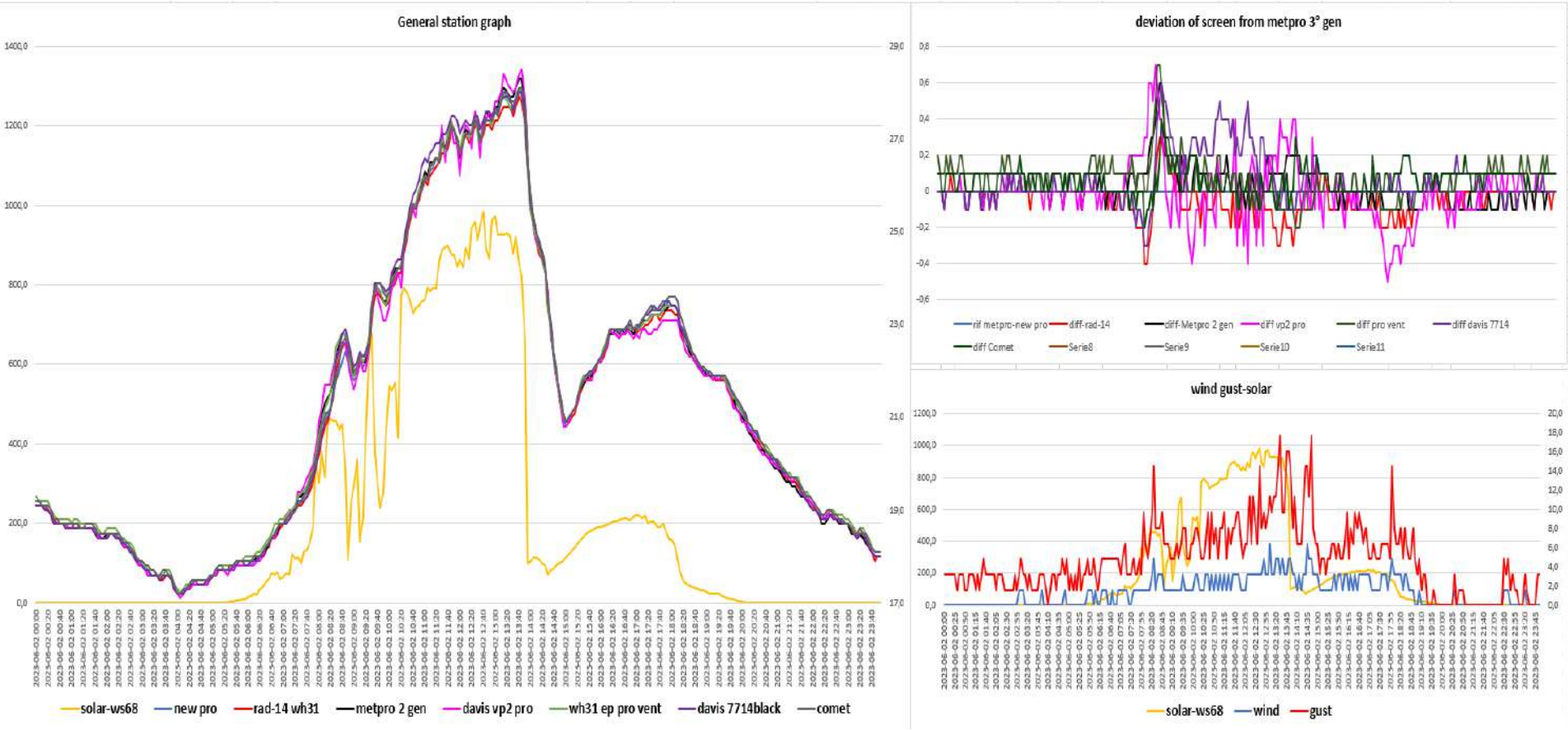
Meteoshield pro 3°gen (probe sensor wh32EP ecowitt) -meteoshield pro 2° gen (probe sensor wh31 EP ecowitt)



### STATISTICAL DATA (MAXIMUM MINIMUM AVERAGES)

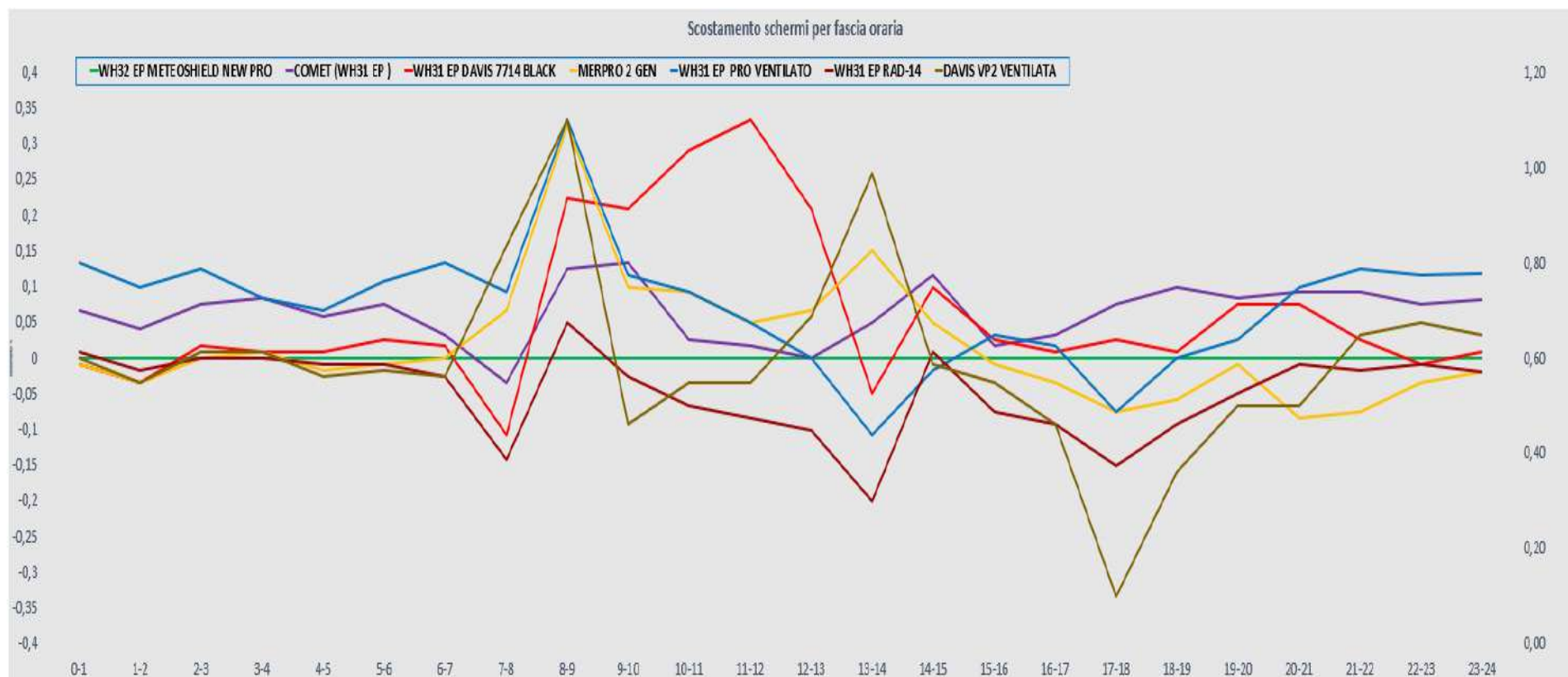
vento medio 24H	1,4 km/h	vento medio dalle ore 08:00 alle 18:00	2,7 km/h	dalle ore 08:00 alle 18:00								scostamenti dalle ore 08:00 alle 18:00							
media met pro New	21,2	schermo di riferimento				media met pro 3° gen	24,2												
max met pro New	28,1				max met pro 3° gen	28,1													
min met pro New	17,2				min met pro 3° gen	20,6													
media davis vp2 pro vent	21,21	scost medio davis vp2 pro vent	-0			media davis vp2 pro vent	24,2	scost medio davis vp2 pro vent	0,0		media davis7714black	24,3	scost medio davis 7714 black	0,1					
max davis vp2pro vent	28,5	scost max davis vp2 pro vent	0,7			max davis vp2 pro vent	28,5	scost max davis vp2 pro vent	0,7		max davis7714 black	28,0	scost max davis 7714 black	0,6					
min davis vp2 pro vent	17,1	scost min davis vp2 pro vent	-0,5			min davis vp2 pro vent	20,8	scost min davis vp2 pro vent	-0,5		min davis 7714 black	20,3	scost min davis 7713 black	-0,3					
media rad-14	21,167	scost medio rad-14	-0,05			media Rad-14	24,1	scost medio rad-14	-0,1		media comet	24,2	scost medio comet	0,1					
max rad-14	27,9	scost max rad-14	0,3			max rad-14	27,9	scost max rad-14	0,3		max comet	28,1	scost max comet	0,4					
min rad-14	17,2	scost min rad-14	-0,4			min Rad-14	20,2	scost min rad-14	-0,4		min comet	20,4	scost min comet	-0,2					
media metpro 2 gen	21,214	scost medio Metpro 2 gen	0,02			media Metpro 2 gen	24,2	scost medio Metpro 2 gen	0,1		media pro ventilato	24,2	scost medio pro vent	0,0					
max Metpro 2 gen	28,1	scost max Metpro 2 gen	0,6			max Metpro 2 gen	28,3	scost max Metpro 2 gen	0,6		max pro ventilato	28,1	scost max pro vent	0,7					
min Metpro 2 gen	17,2	scost min Metpro 2 gen	-0,1			min Metpro 2 gen	20,7	scost min Metpro 2 gen	-0,1		min pro ventilato	20,6	scost min pro vent	-0,2					
media pro ventilato	21,288	scost medio pro vent	0,07																
max pro ventilato	28,1	scost max pro vent	0,7																
min pro ventilato	17,2	scost min pro vent	-0,2																
media davis 7714	21,276	scost medio davis 7714	0,06																
max davis 7714	28	scost max davis 7714	0,6																
min davis 7714	17,2	scost min davis 7714	-0,3																

# general summary





## screen shift by time slot



**RAIN 24h**

<b>Pluviometro ,manuale TFA</b>	<b>0.0 mm</b>
<b>Pluviometro vp2 pro</b>	<b>0,0 mm</b>
<b>Pluviometro wh40 ecowitt suolo</b>	<b>0,0 mm</b>
<b>Meteorain Barani</b>	<b>0,0 mm</b>
<b>Pluviometro gw1001 ecowitt</b>	<b>0,0 mm</b>

leaf wetness-leaf wetness-Pressure

