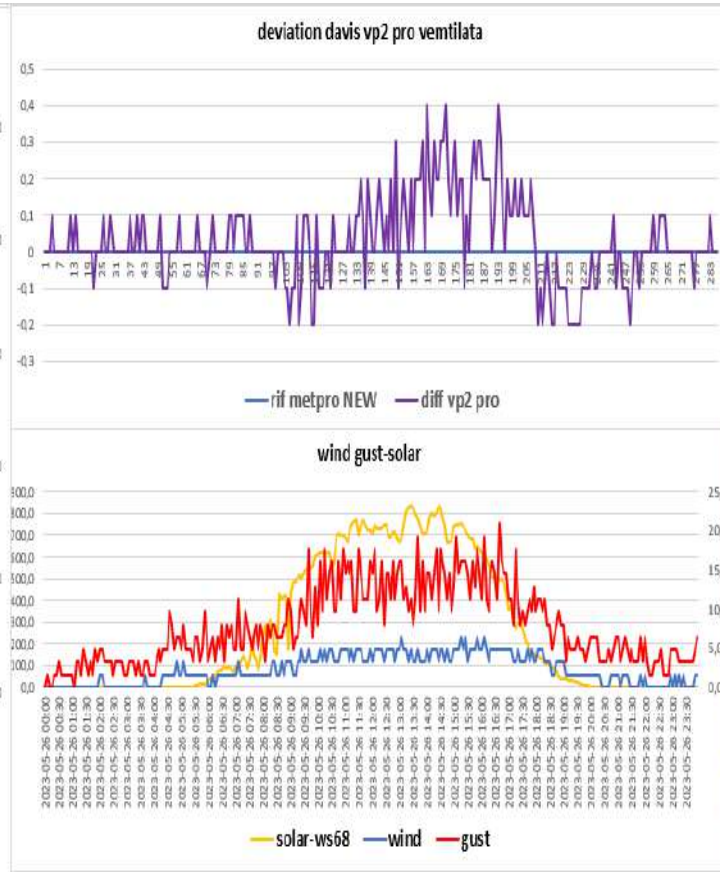
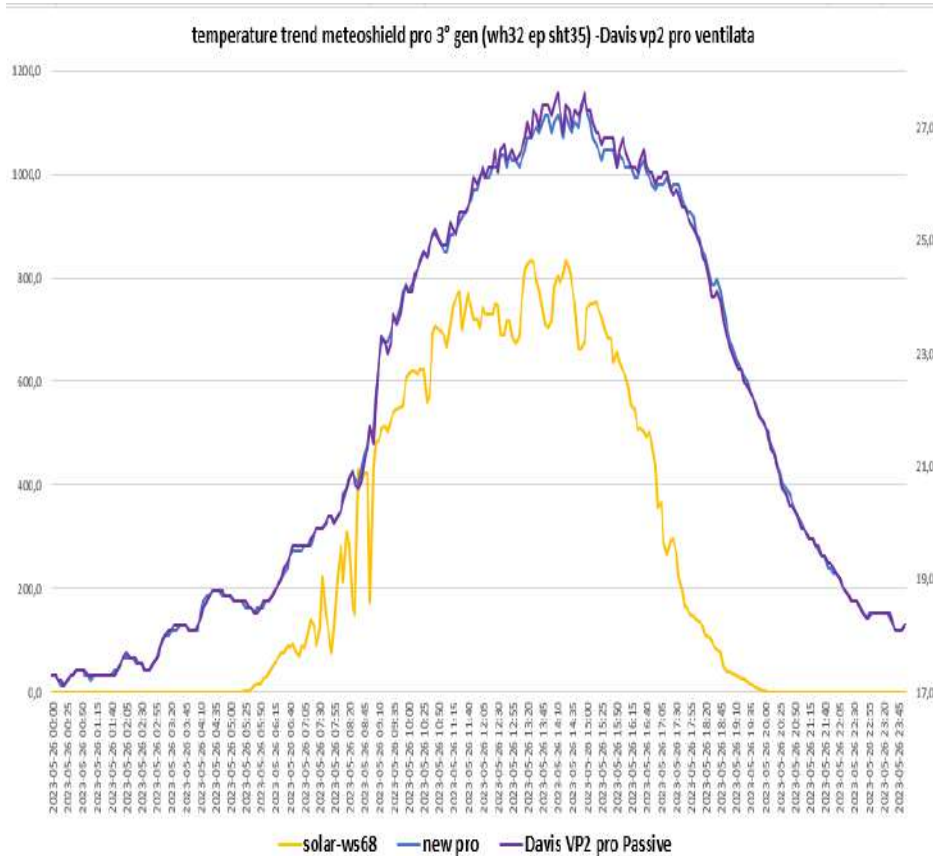
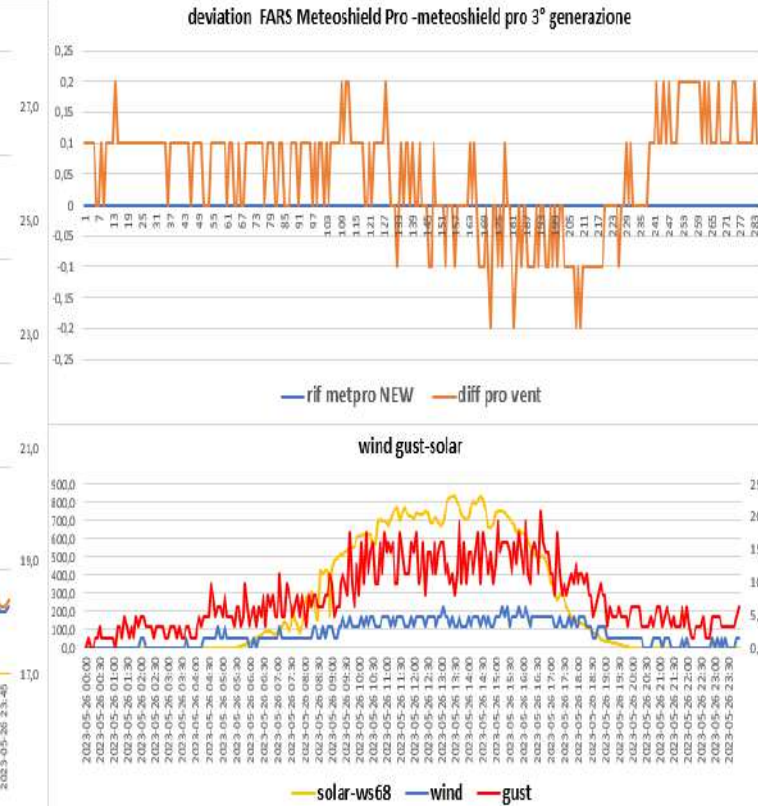
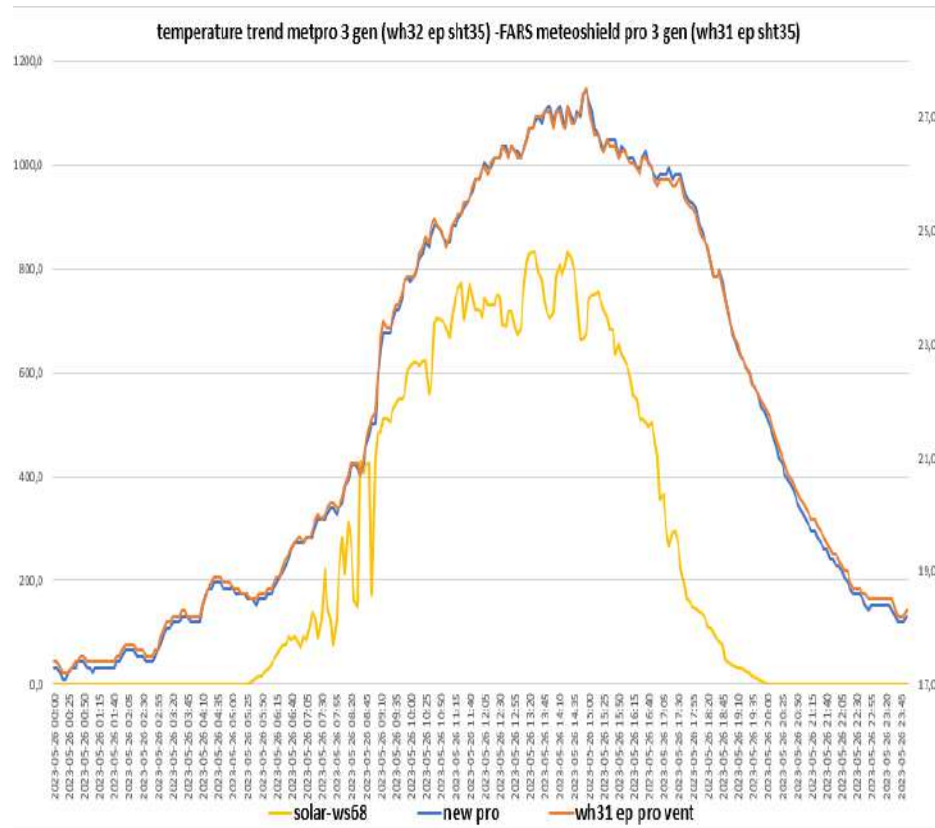


# SCREEN TREND OF 26-05-2023

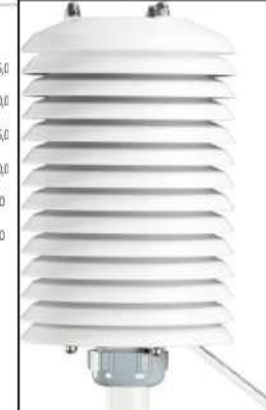
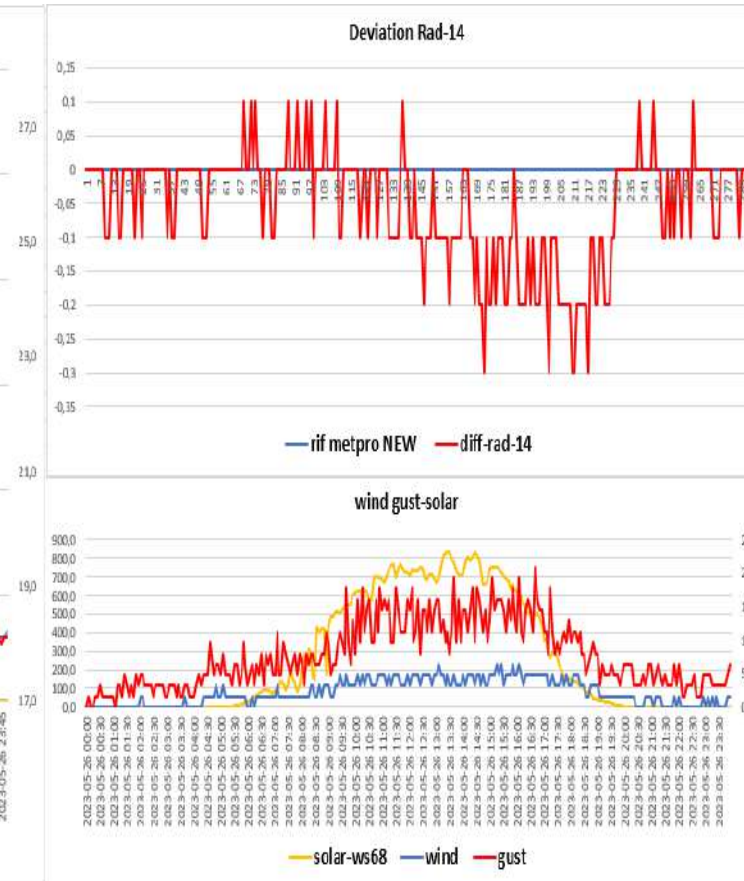
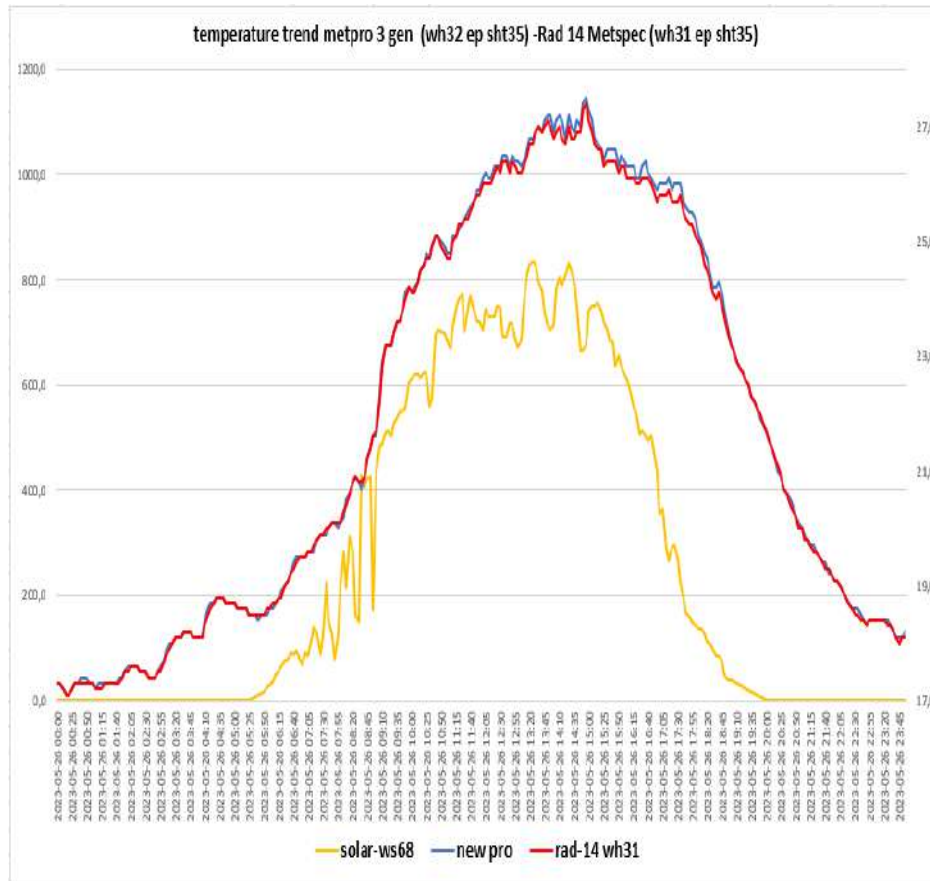
Davis vp2 pro- Metpro old (Probe sensor wh32EP ecowitt)



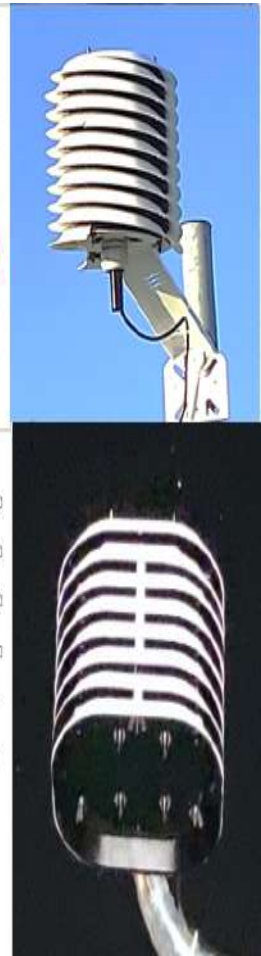
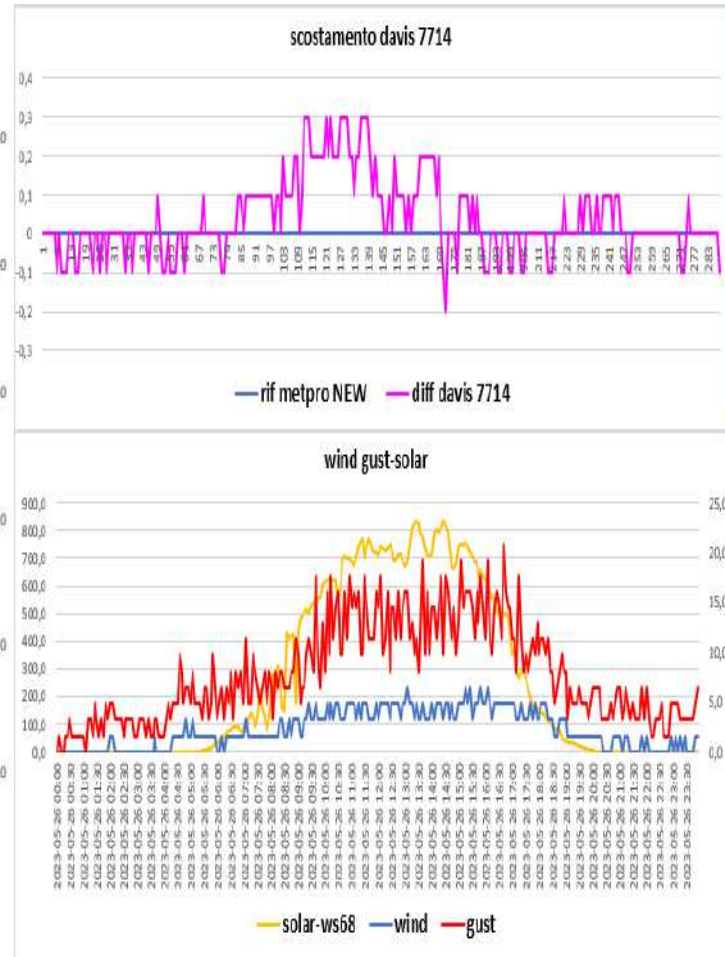
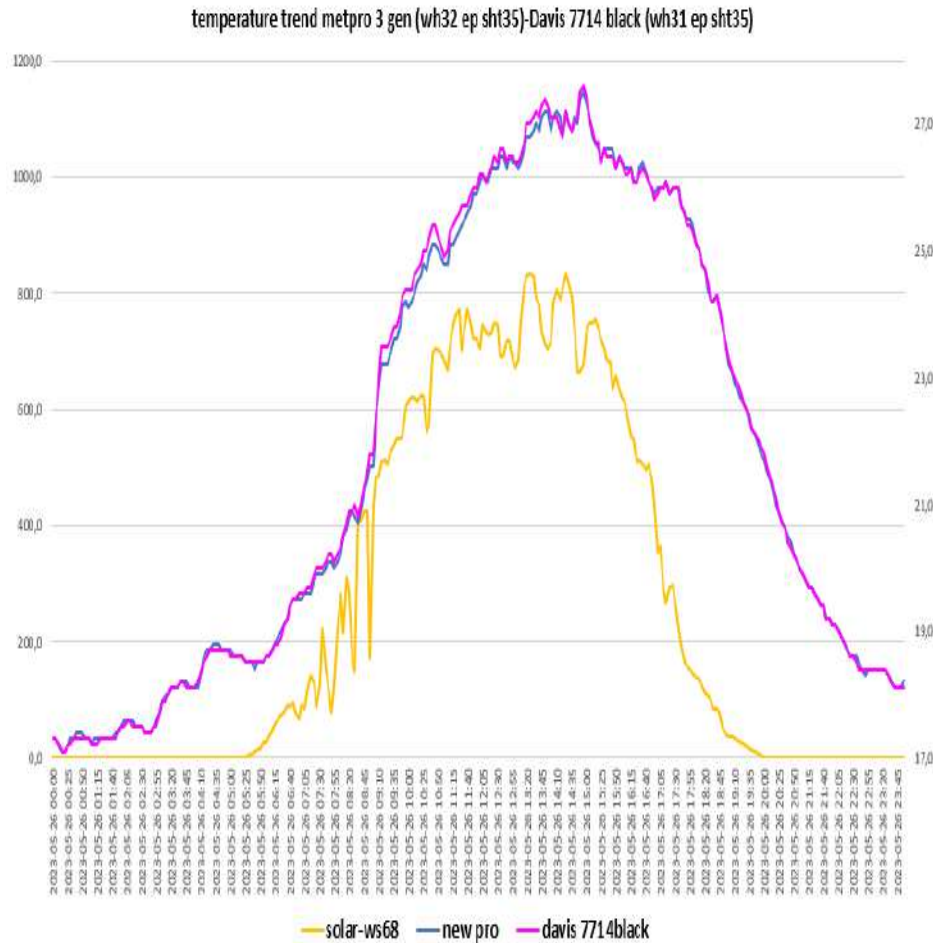
## Metpro NEW (Probe sensor wh32EP ecowitt)- FARS meteoshield pro 3° gen (Probe sensor wh31EP ecowitt)



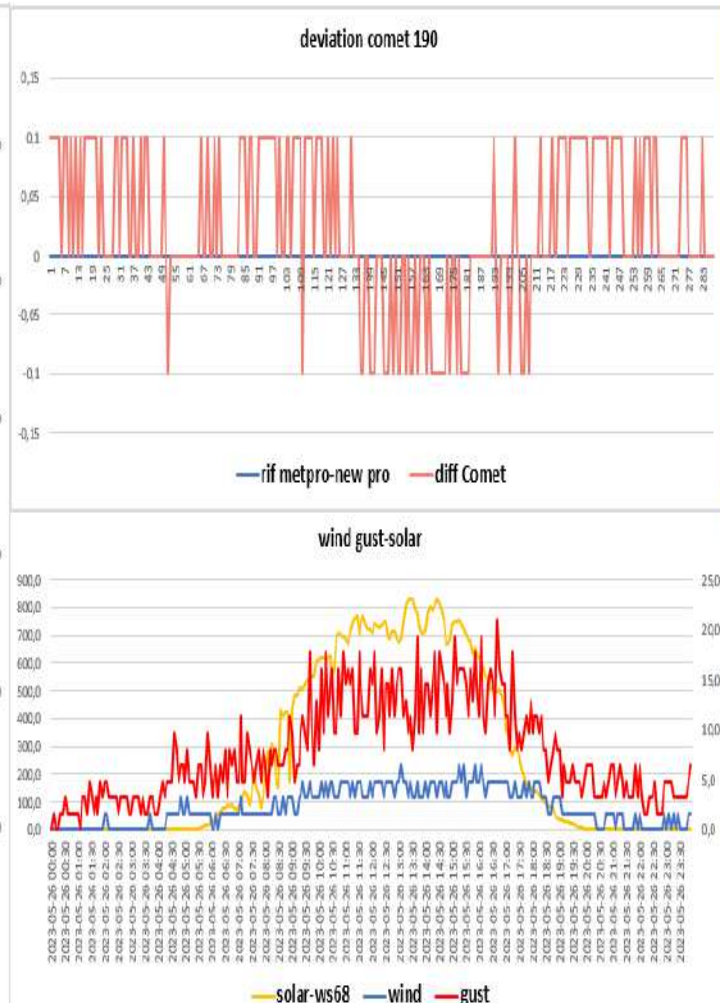
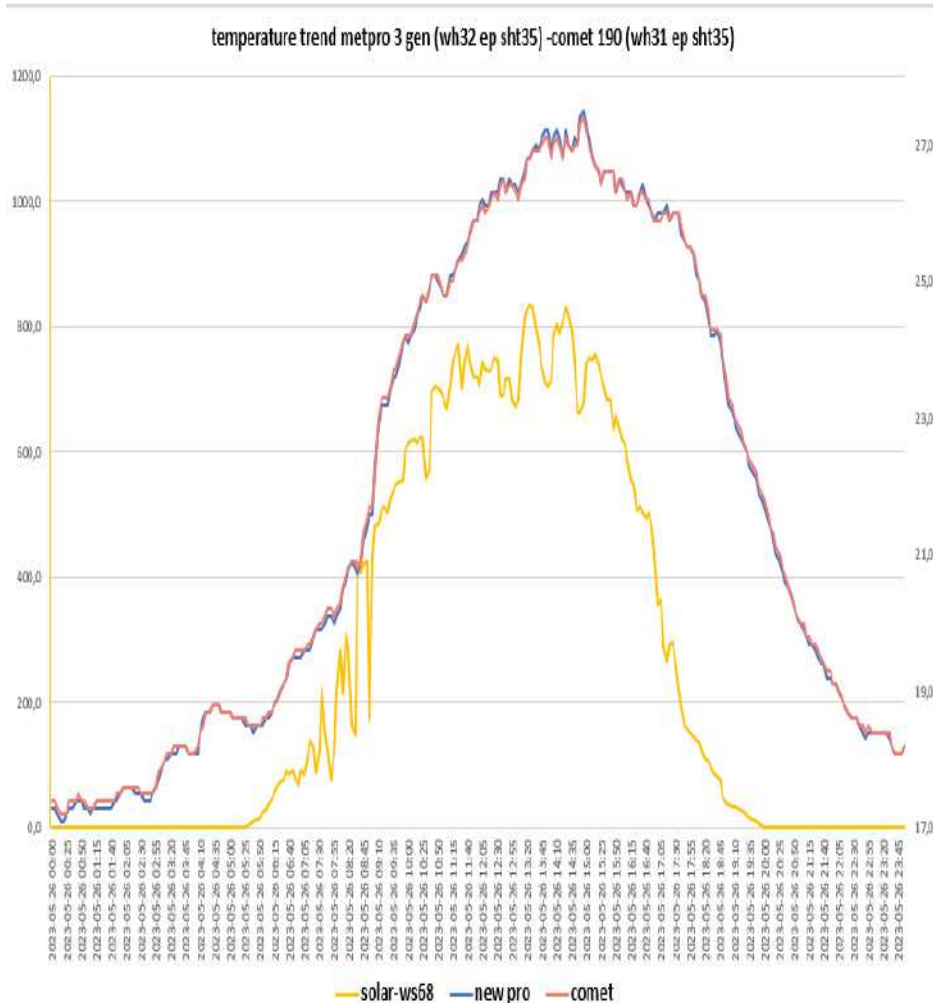
## Metpro NEW (Probe sensor WH32 EP ecowitt) – Rad14 Metspec (Probe sensor wh31EP-WH31ep ecowitt)



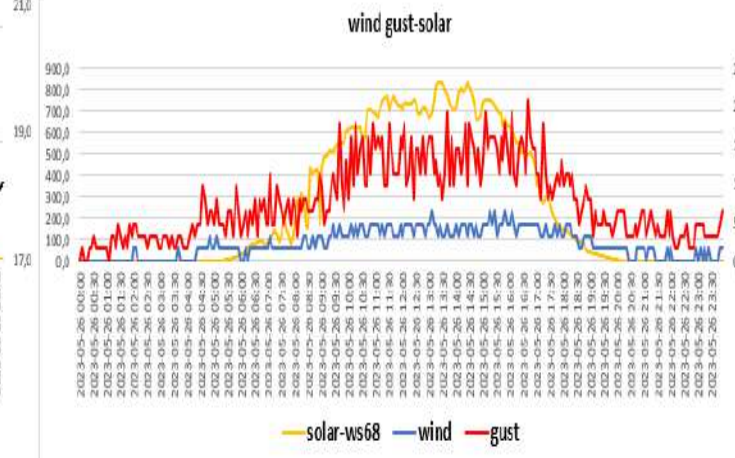
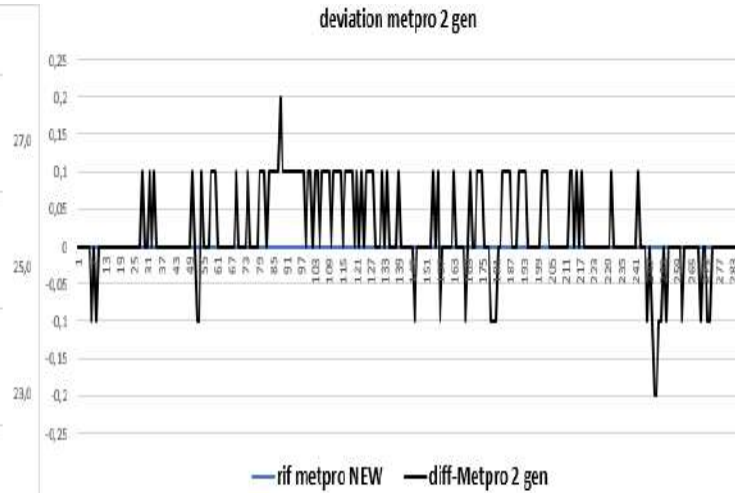
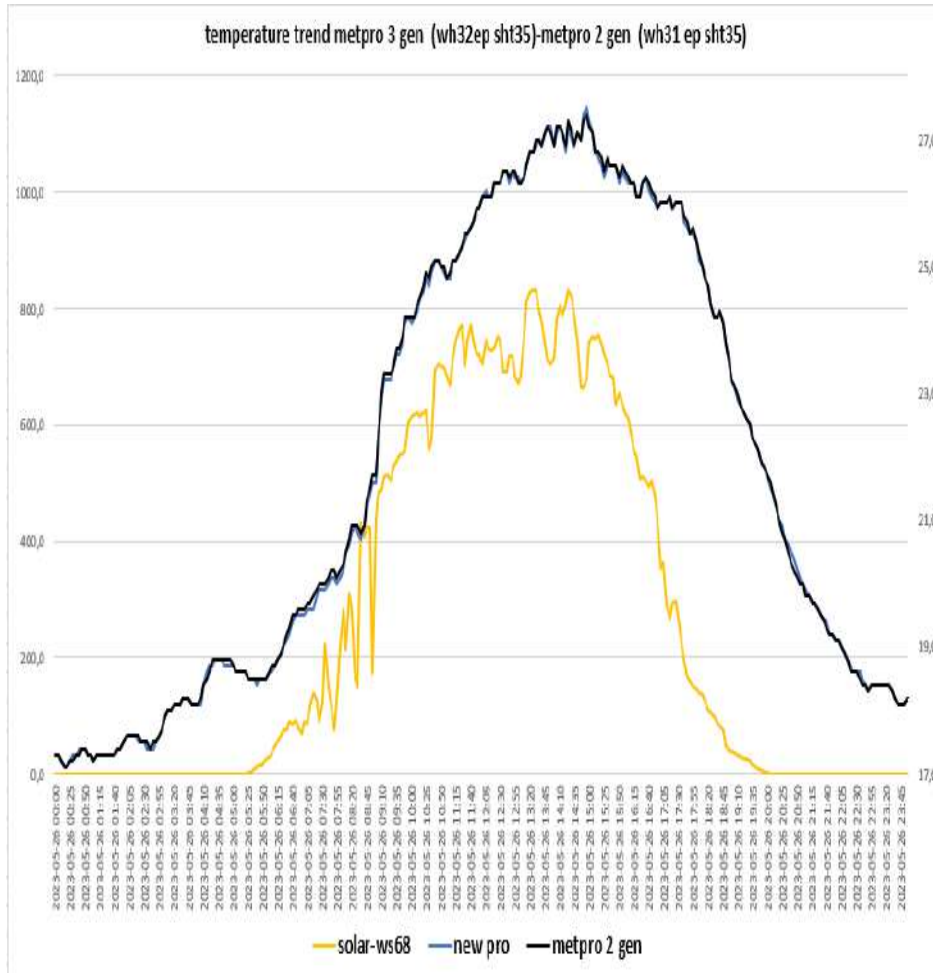
Metpro NEW (Probe sensor wh32 EP ecowitt)-DAVIS 7714 Black(Probe sensor wh31EP ecowitt)-



## NEW PRO BARANI (probe sensor wh31 EP ecowitt)- COMET 190 probe sensor wh32 EP

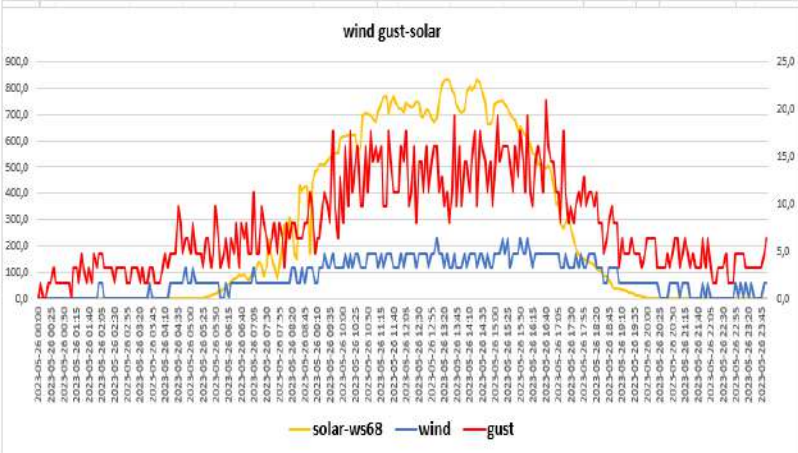
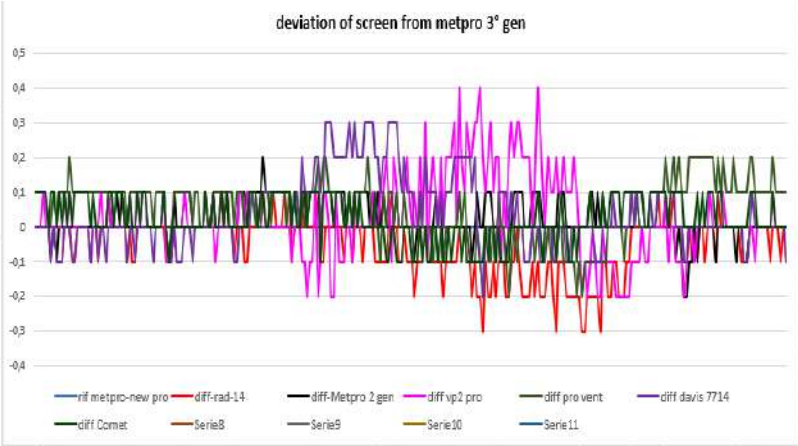
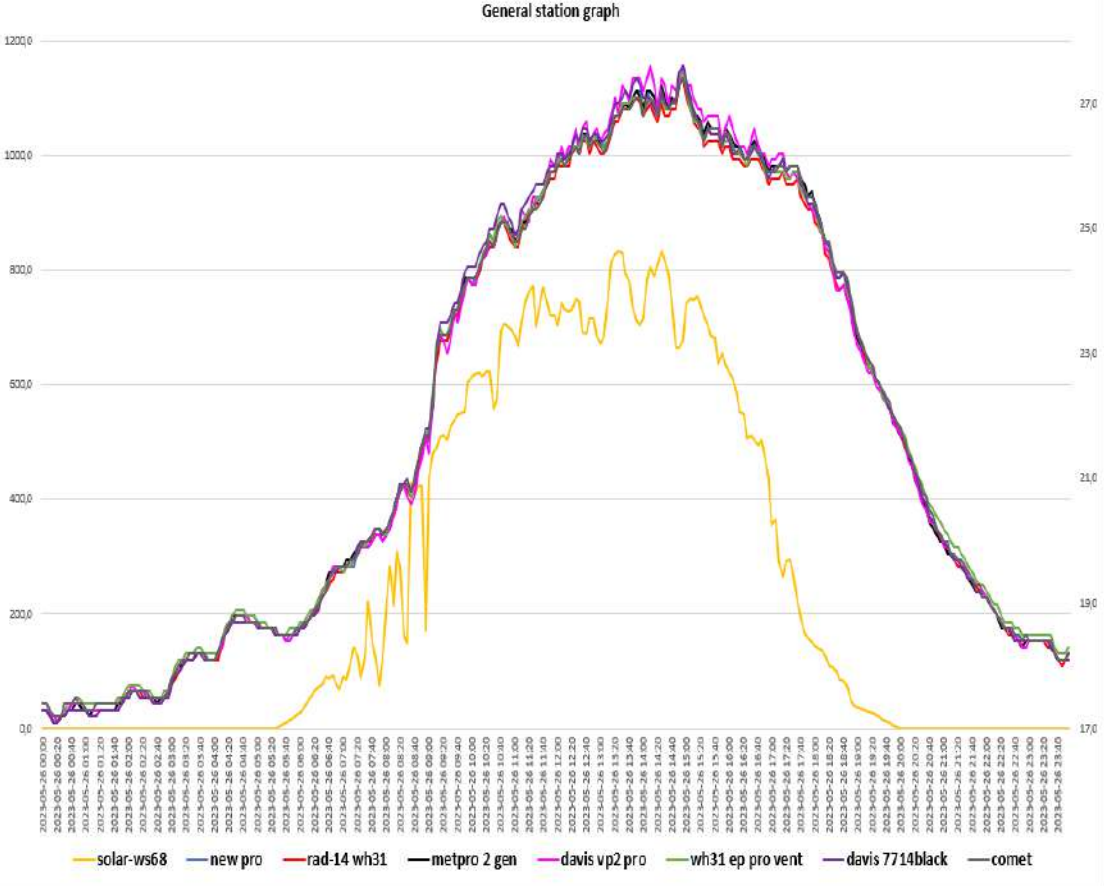


**METPRO OLD (probe sensor wh32EP ecowitt) -RAD-02 (probe sensor wh31 EP ecowitt)**

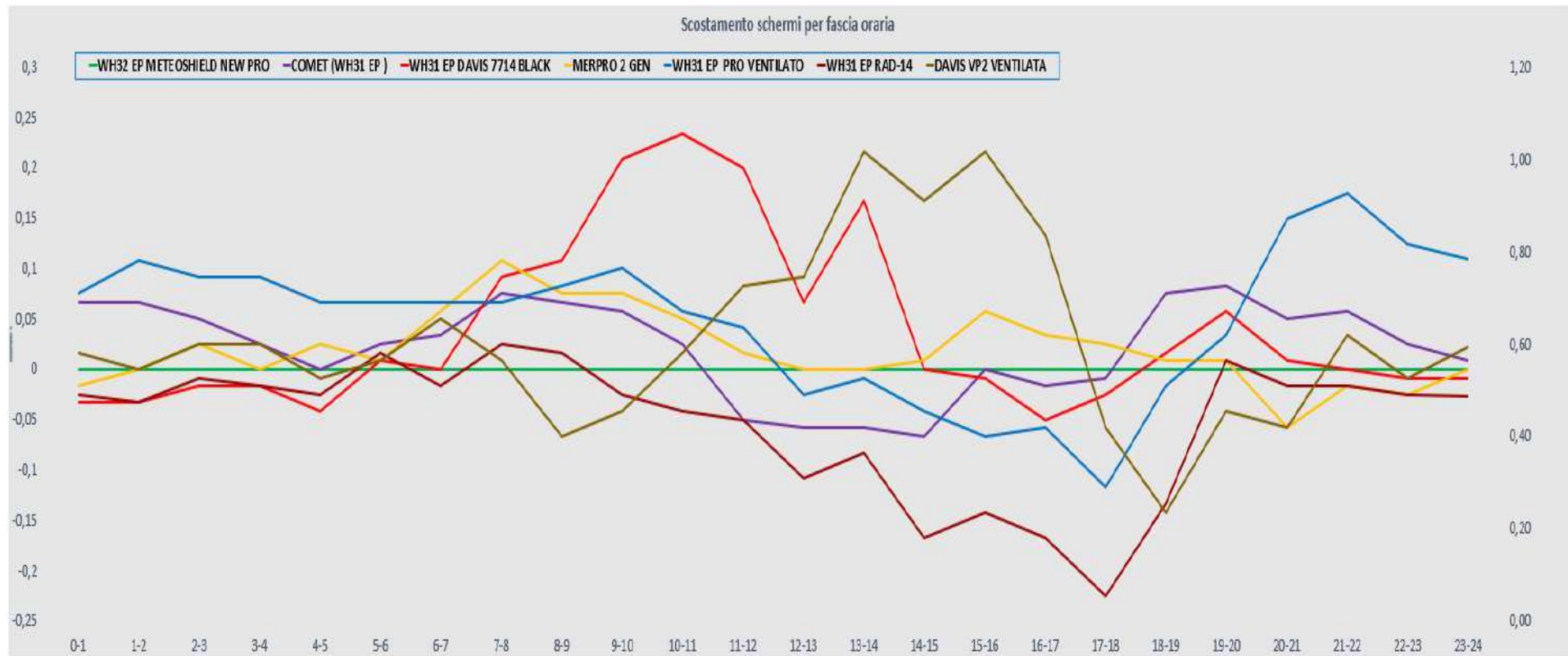




# general summary



### screen shift by time slot



**RAIN 24h**

<b>Pluviometro ,manuale TFA</b>	<b>0.0 mm</b>
<b>Pluviometro vp2 pro</b>	<b>0,0 mm</b>
<b>Pluviometro wh40 ecowitt suolo</b>	<b>0,0 mm</b>
<b>Meteorain Barani</b>	<b>0,0 mm</b>
<b>Pluviometro gw1001 ecowitt</b>	<b>0,0 mm</b>

# leaf wetness-leaf wetness-Pressure

