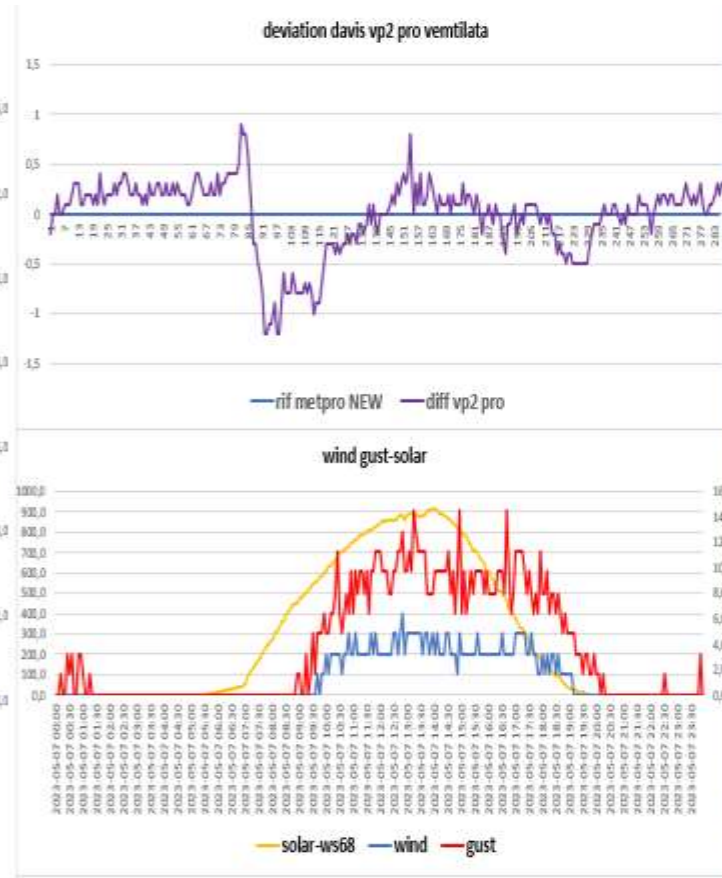
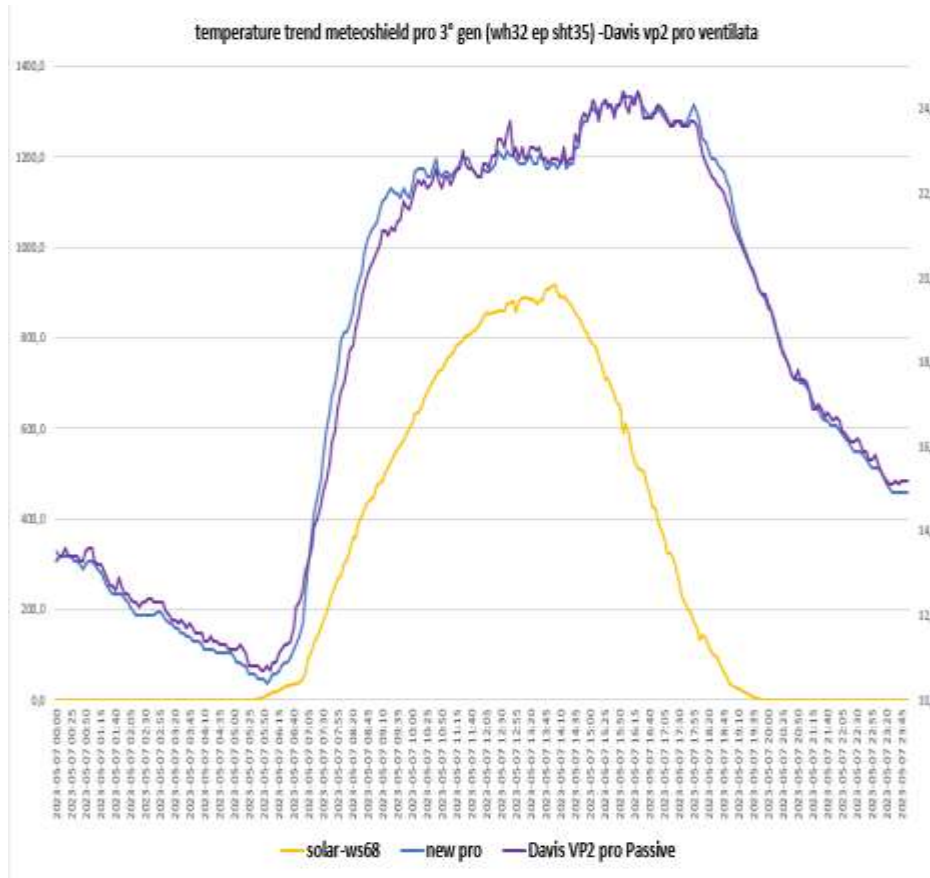
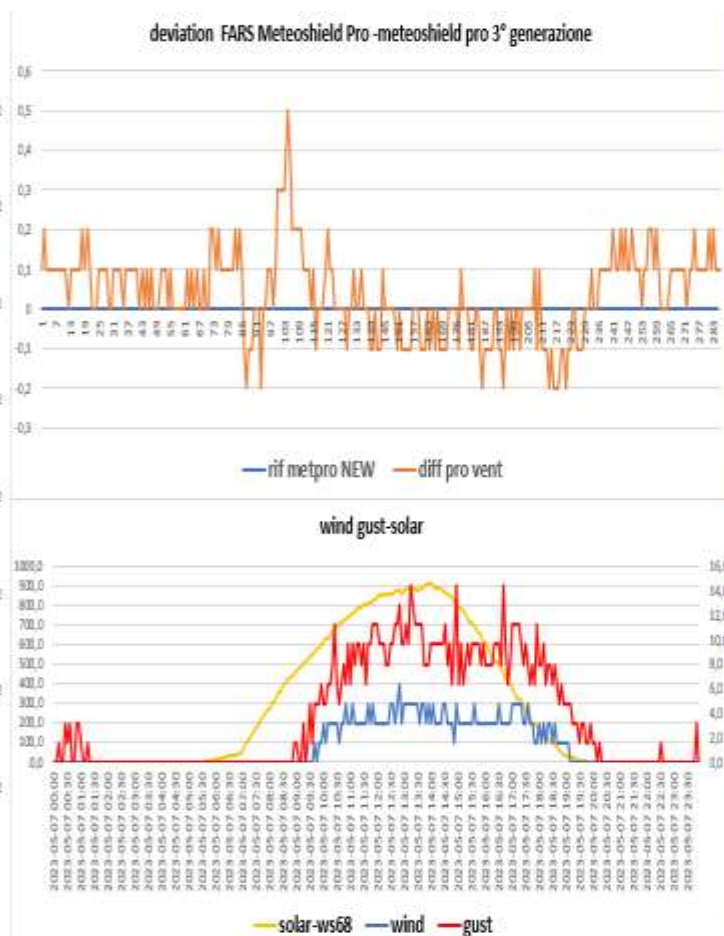
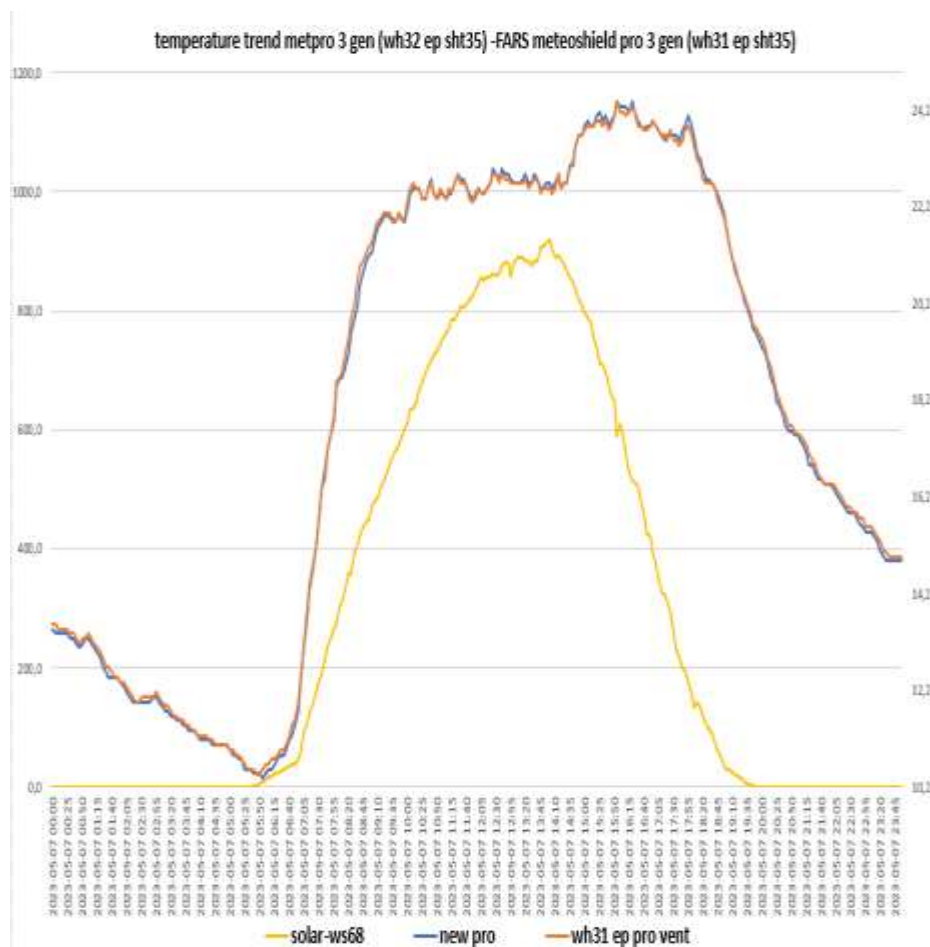


SCREEN TREND OF 07-05-2023

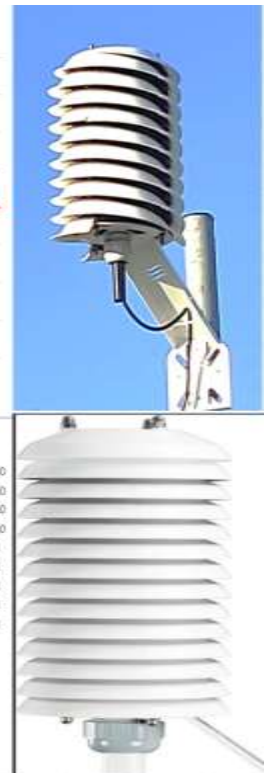
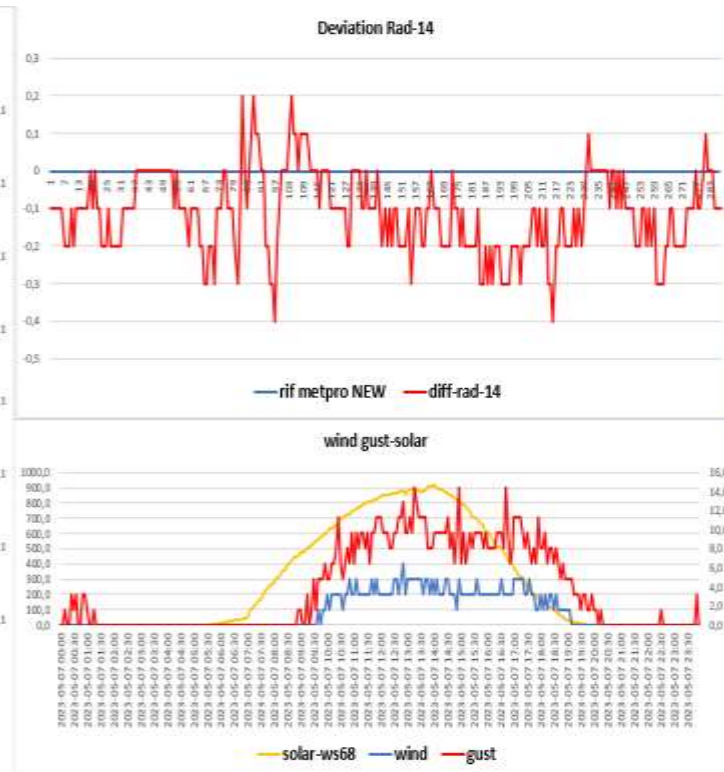
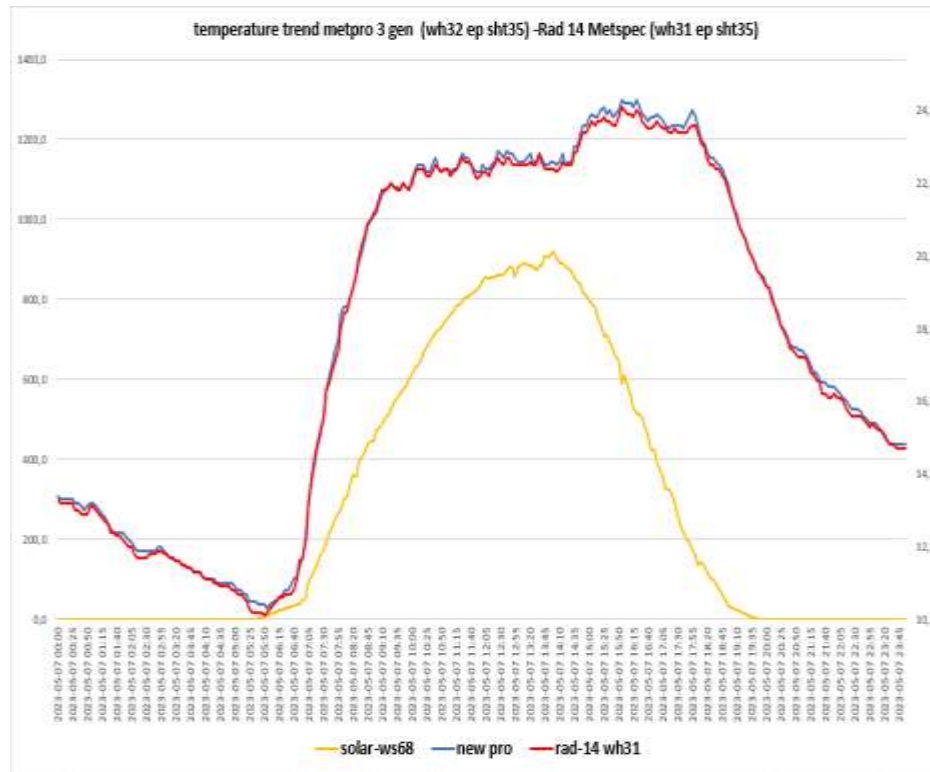
Davis vp2 pro- Metpro old (Probe sensor wh32EP ecowitt)



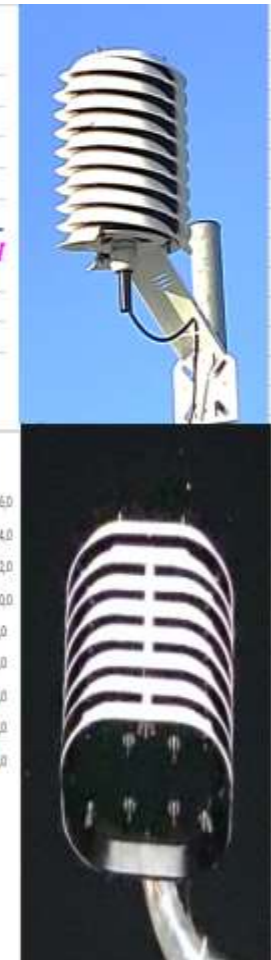
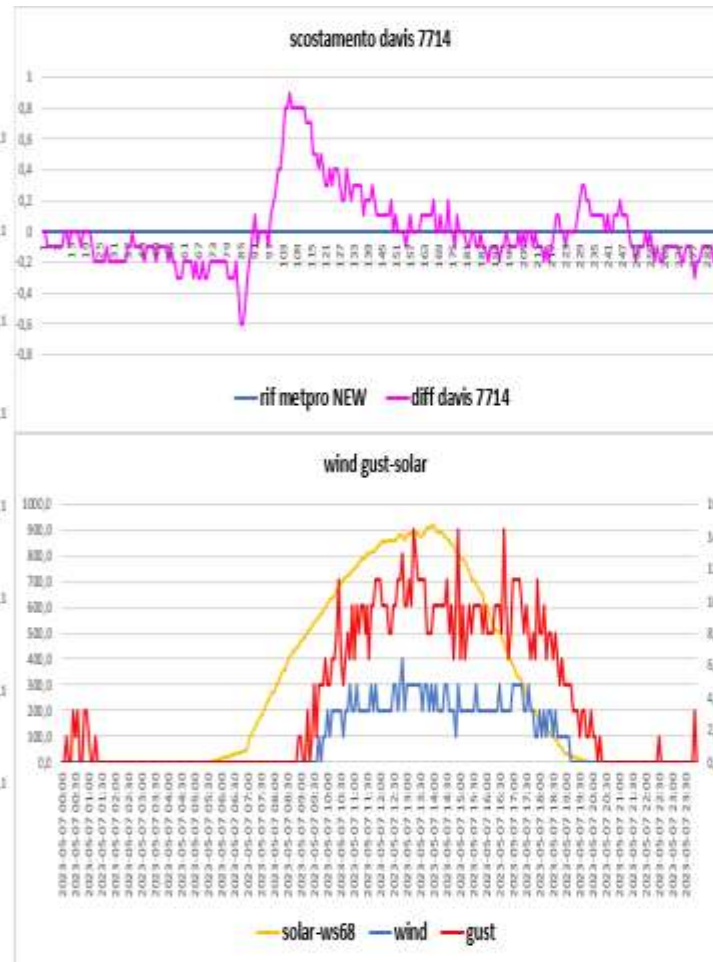
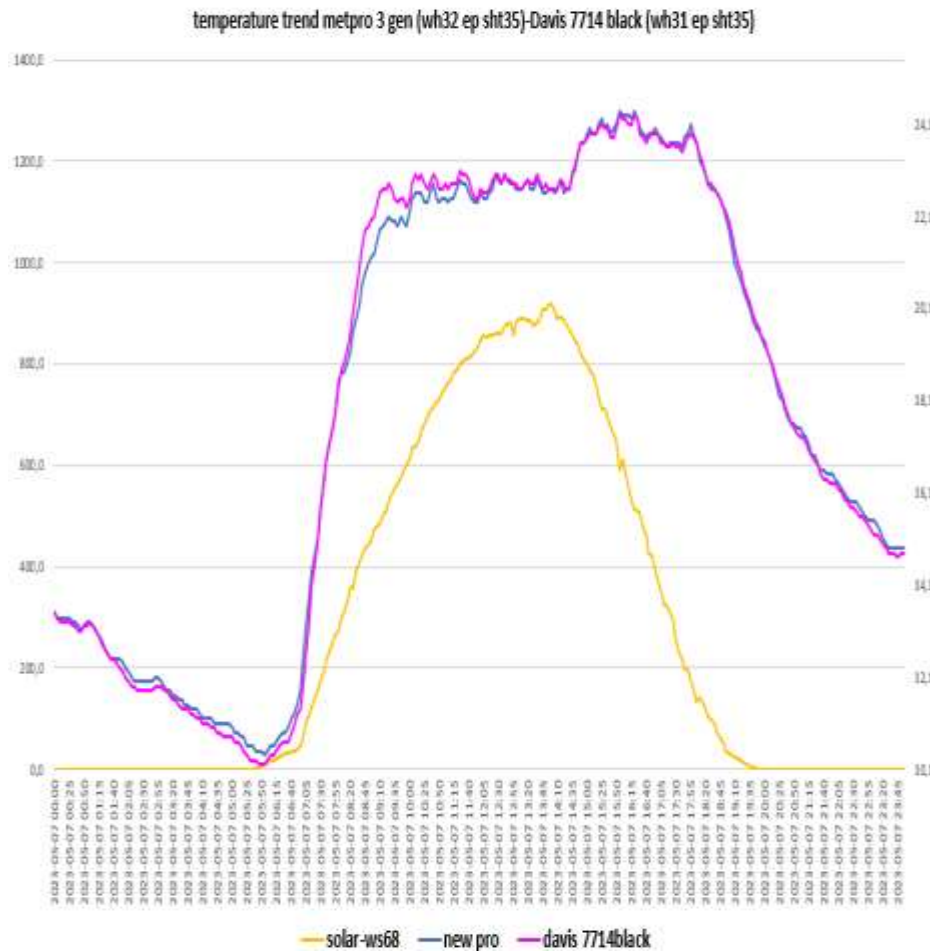
Metpro NEW (Probe sensor wh32EP ecowitt)- FARS meteoshield pro 3° gen (Probe sensor wh31EP ecowitt)



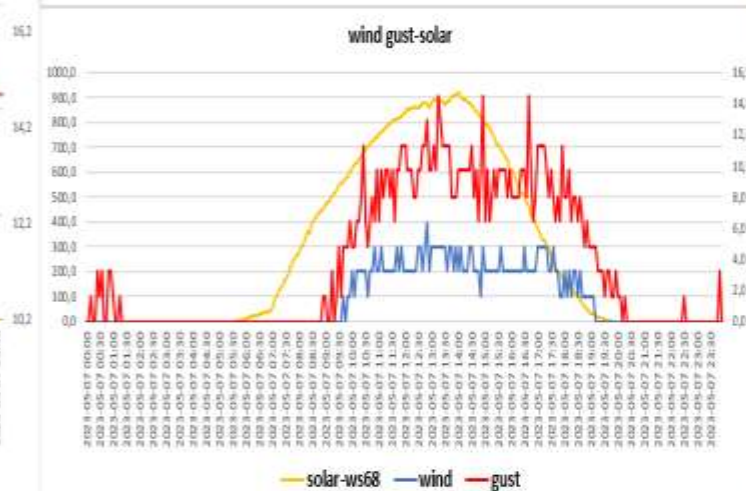
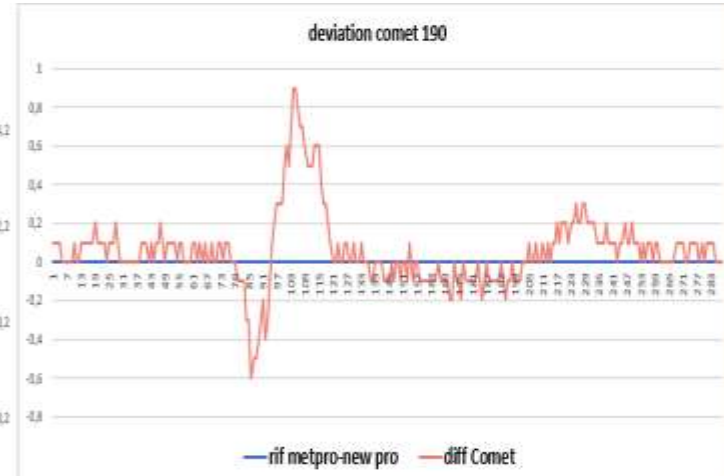
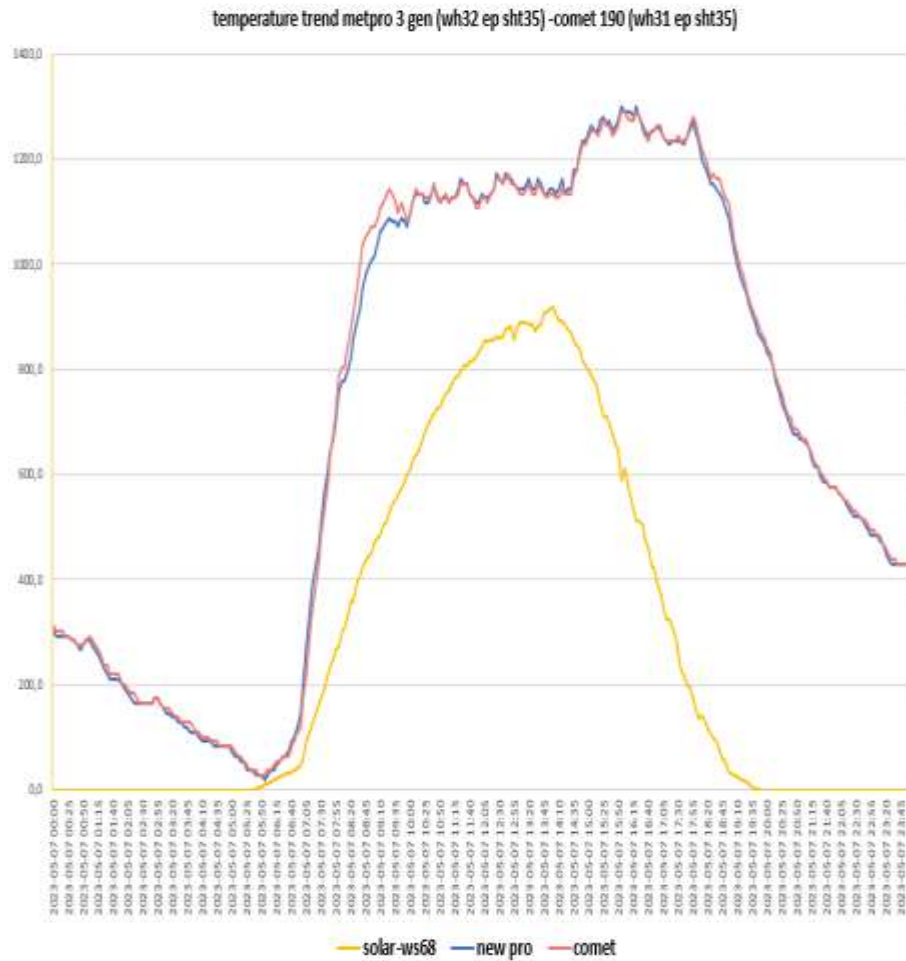
Metpro NEW (Probe sensor WH32 EP ecowitt) – Rad14 Metspec (Probe sensor wh31EP-WH31ep ecowitt)



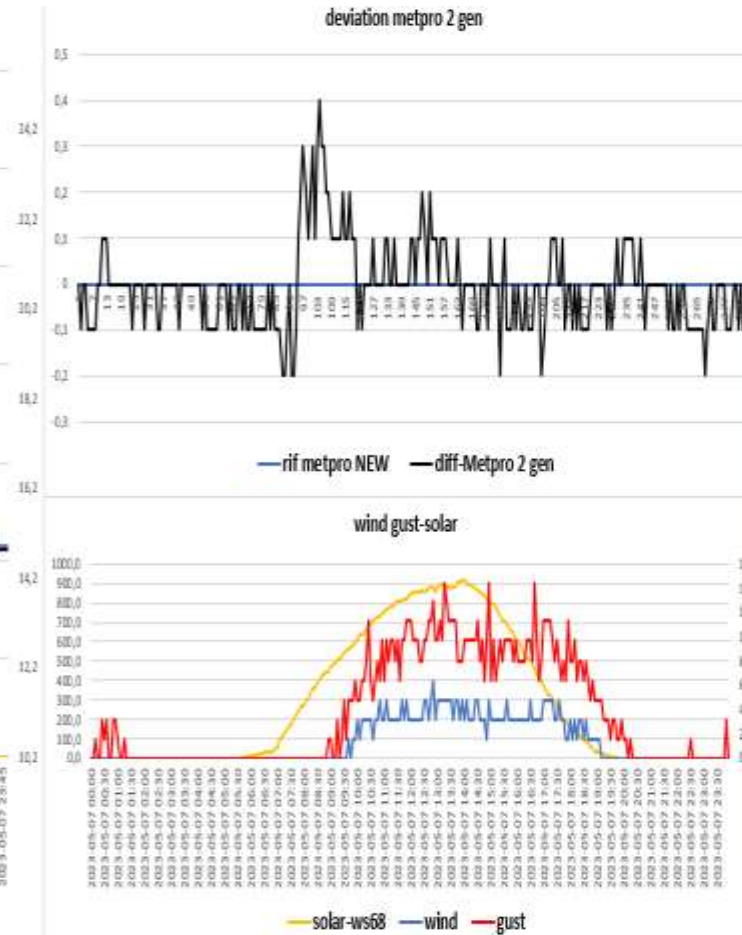
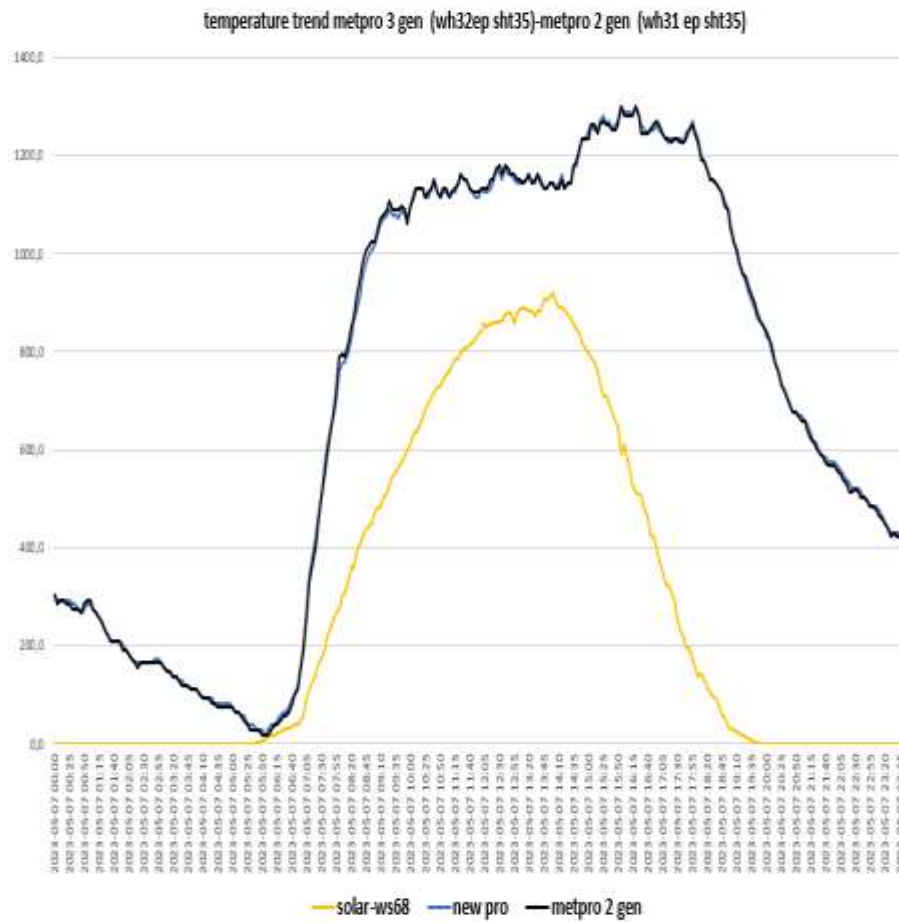
Metpro NEW (Probe sensor wh32 EP ecowitt)-DAVIS 7714 Black(Probe sensor wh31EP ecowitt)-



NEW PRO BARANI (probe sensor wh31 EP ecowitt)- COMET 190 probe sensor wh32 EP



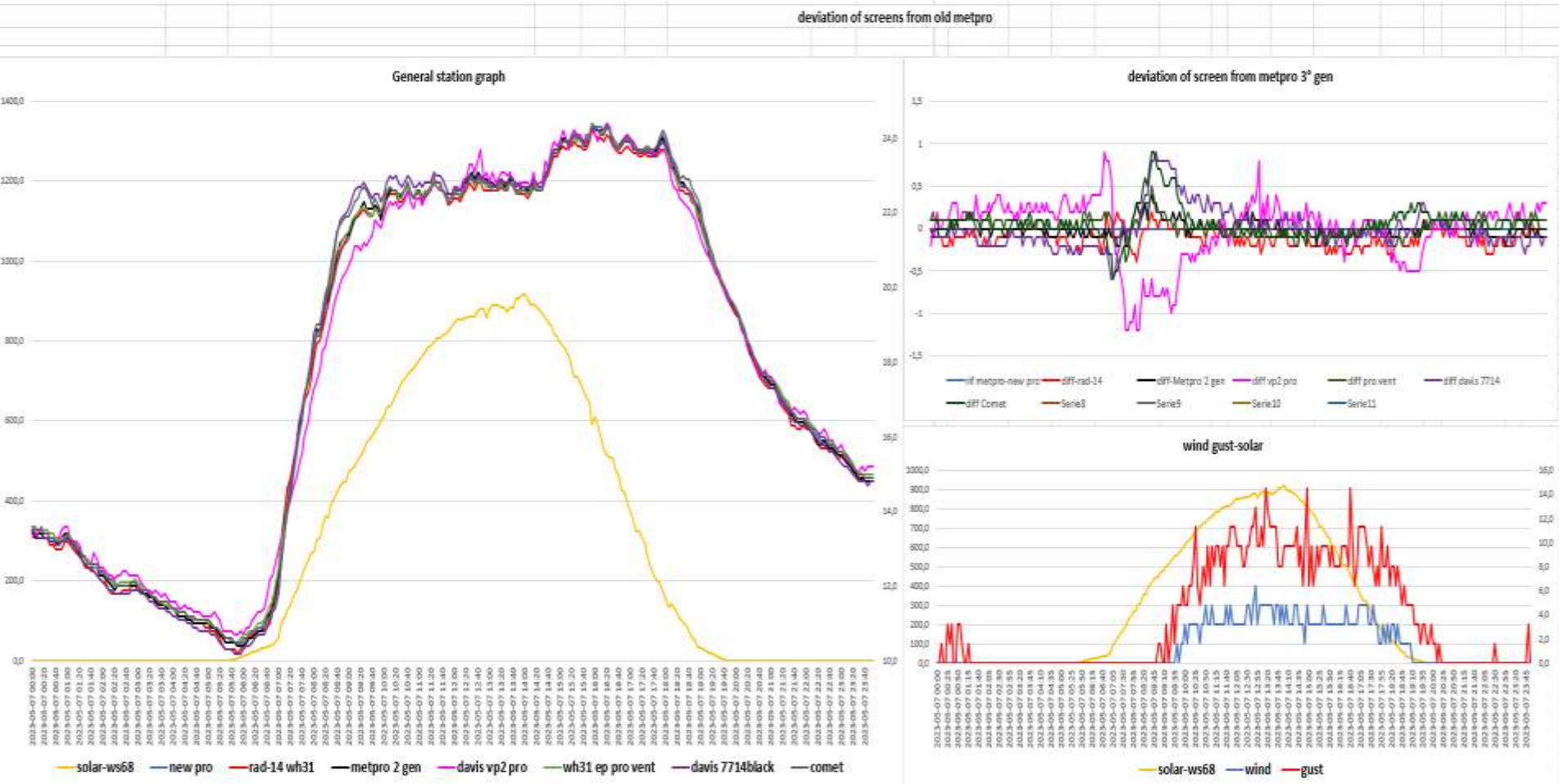
METPRO OLD (probe sensor wh32EP ecowitt) -RAD-02 (probe sensor wh31 EP ecowitt)



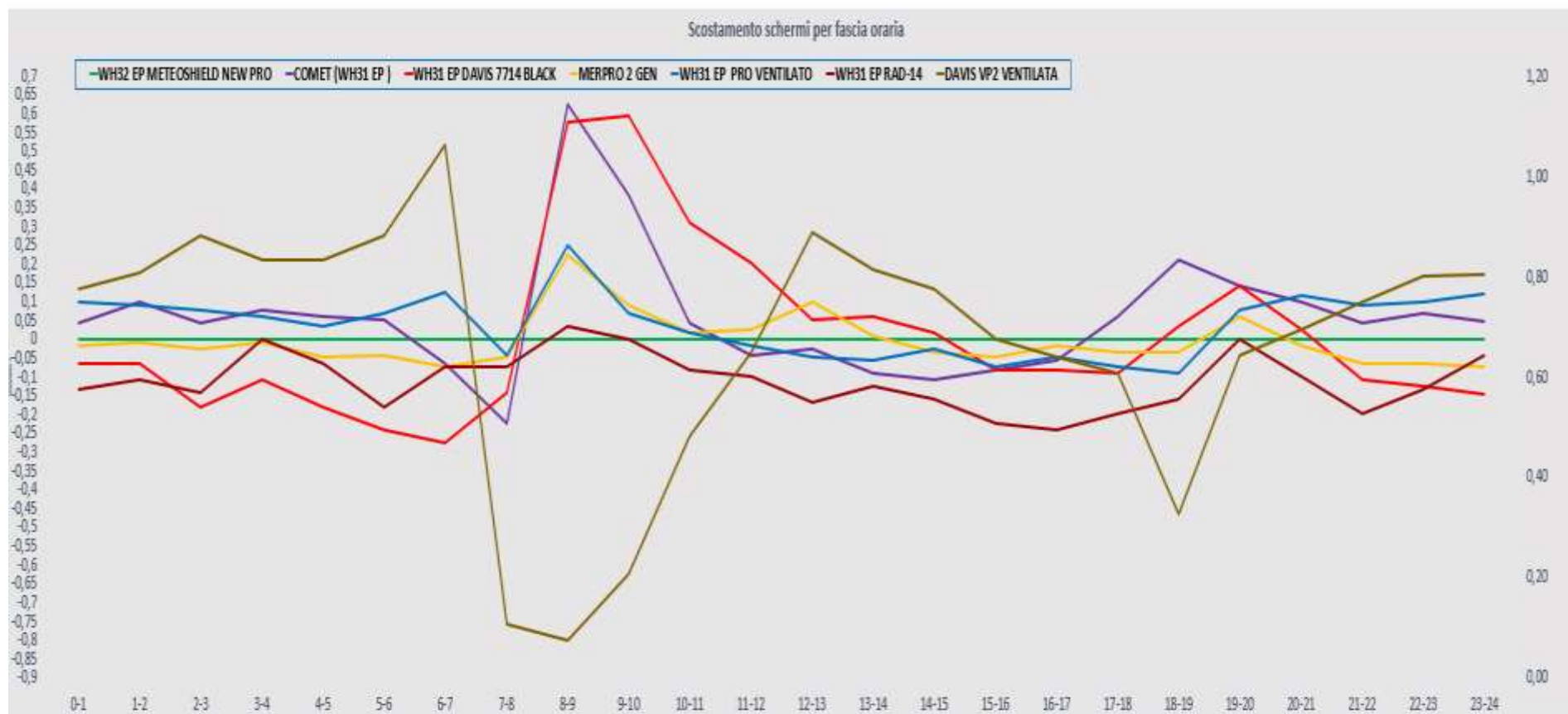
STATISTICAL DATA (MAXIMUM MINIMUM AVERAGES)

vento medio 24H	1,3 km/h	vento medio dalle ore 08:00 alle 18:00	3,0 km/h	dalle ore 08:00 alle 18:00								scostamenti dalle ore 08:00 alle 18:00									
media met pro New	18,1	schermo di riferimento		media met pro 3° gen	22,7																
max met pro New	24,4		max met pro 3° gen	24,4																	
min met pro New	10,4		min met pro 3° gen	18,5																	
media davis vp2 pro vent	18,105	scost medio davis vp2 pro vent	-0,01	media davis vp2 pro vent	22,6	scost medio davis vp2 pro vent	-0,1	media davis7714black	22,9	scost medio davis 7714 black	0,2										
max davis vp2pro vent	24,4	scost max davis vp2 pro vent	0,9	max davis vp2 pro vent	24,4	scost max davis vp2 pro vent	0,8	max davis7714 black	24,3	scost max davis 7714 black	0,9										
min davis vp2 pro vent	10,7	scost min davis vp2 pro vent	-1,2	min davis vp2 pro vent	17,3	scost min davis vp2 pro vent	-1,2	min davis 7714 black	18,4	scost min davis 7713 black	-0,2										
media rad-14	18,006	scost medio rad-14	-0,11	media Rad-14	22,6	scost medio rad-14	-0,1	media comet	22,8	scost medio comet	0,1										
max rad-14	24,2	scost max rad-14	0,2	max rad-14	24,2	scost max rad-14	0,2	max comet	24,3	scost max comet	0,9										
min rad-14	10,2	scost min rad-14	-0,4	min Rad-14	18,1	scost min rad-14	-0,4	min comet	18,8	scost min comet	-0,2										
media metpro 2 gen	18,118	scost medio Metpro 2 gen	-0,01	media Metpro 2 gen	22,8	scost medio Metpro 2 gen	0,0	media pro ventilato	22,7	scost medio pro vent	0,0										
max Metpro 2 gen	24,4	scost max Metpro 2 gen	0,4	max Metpro 2 gen	24,4	scost max Metpro 2 gen	0,4	max pro ventilato	24,4	scost max pro vent	0,5										
min Metpro 2 gen	10,4	scost min Metpro 2 gen	-0,2	min Metpro 2 gen	18,8	scost min Metpro 2 gen	-0,2	min pro ventilato	18,6	scost min pro vent	-0,2										
media pro ventilato	18,155	scost medio pro vent	0,04																		
max pro ventilato	24,4	scost max pro vent	0,5																		
min pro ventilato	10,5	scost min pro vent	-0,2																		
media davis 7714	18,122	scost medio davis 7714	0																		
max davis 7714	24,3	scost max davis 7714	0,9																		
min davis 7714	10,2	scost min davis 7714	-0,6																		

general summary



screen shift by time slot



RAIN 24h

Pluviometro ,manuale TFA	0.0 mm
Pluviometro vp2 pro	0,0 mm
Pluviometro wh40 ecowitt suolo	0,0 mm
Meteorain Barani	0,0 mm
Pluviometro gw1001 ecowitt	0,0 mm

leaf wetness-leaf wetness-Pressure

