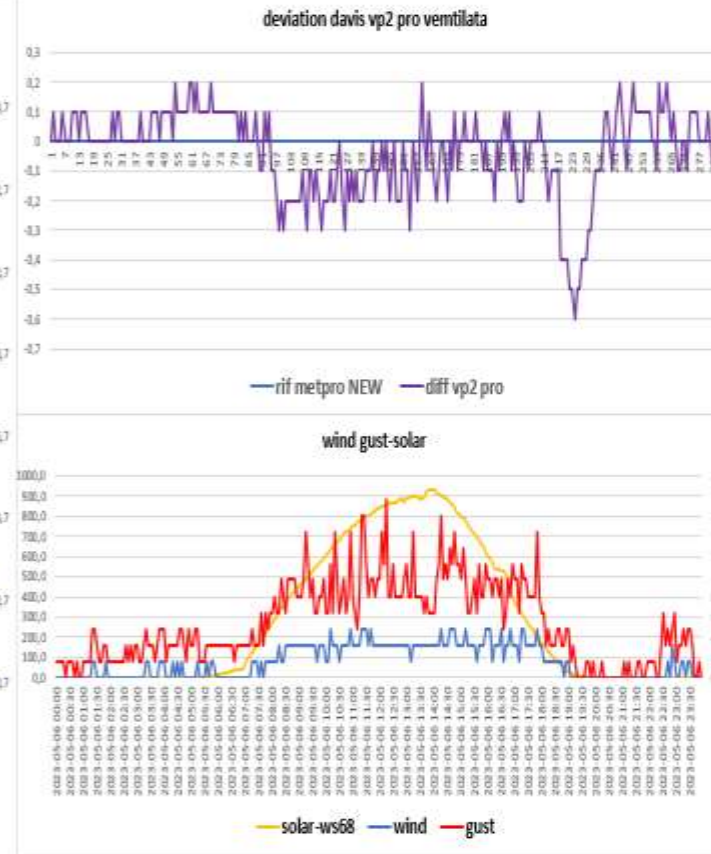
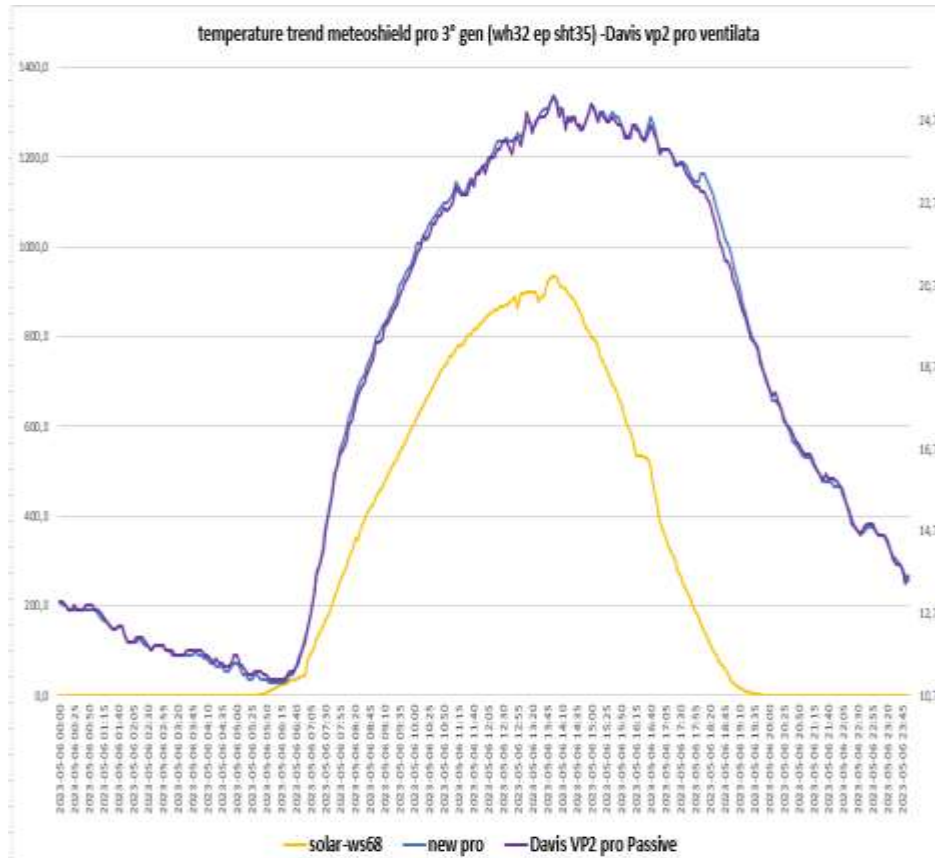
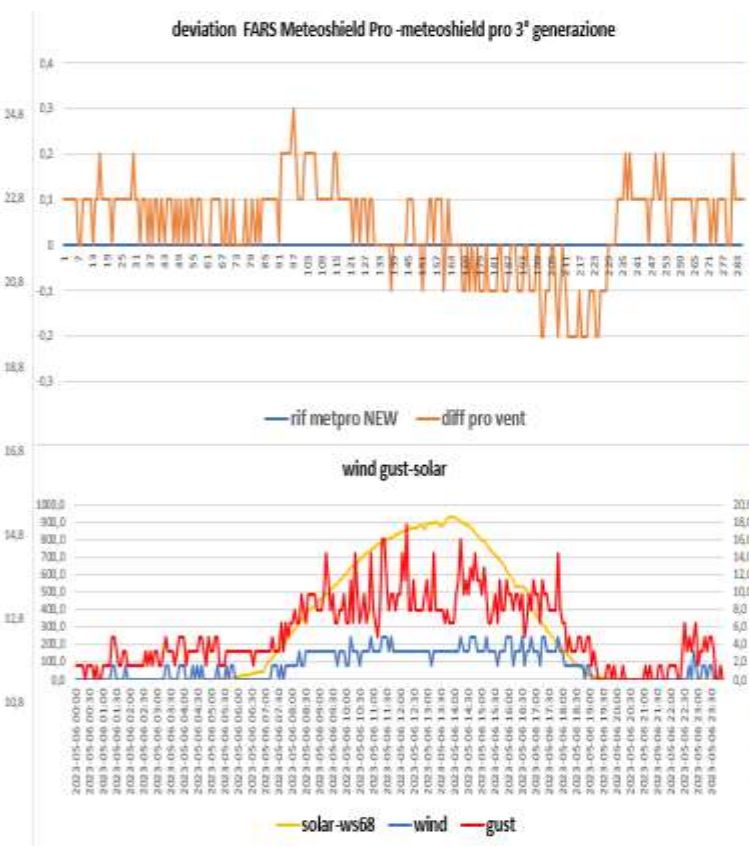
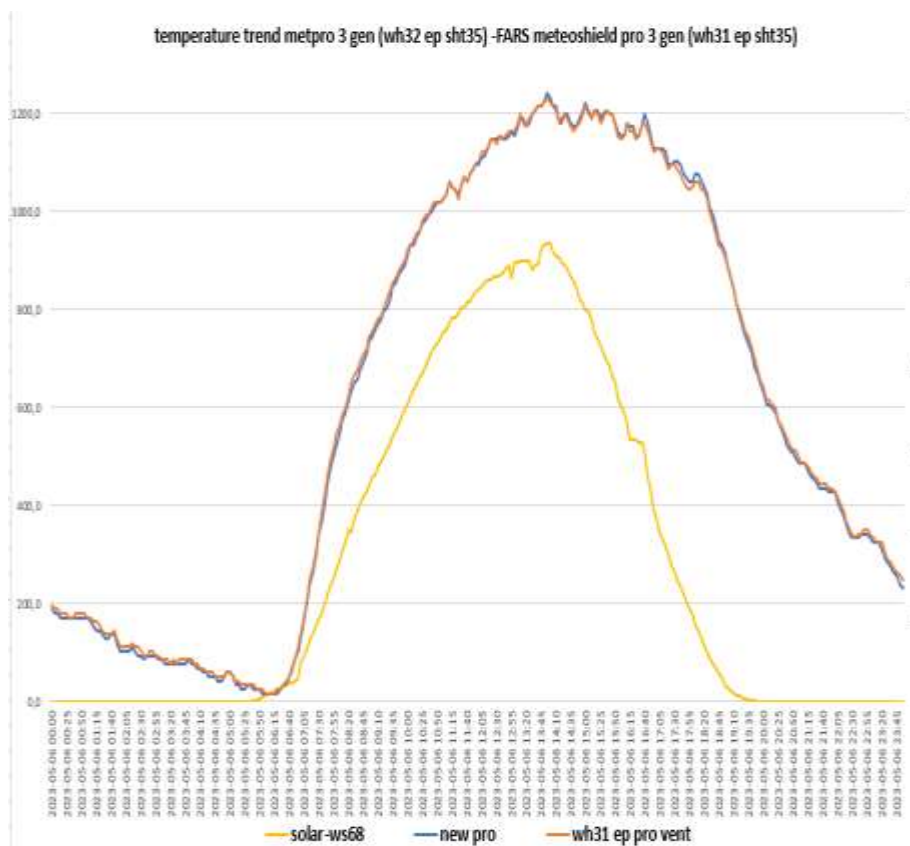


SCREEN TREND OF 06-05-2023

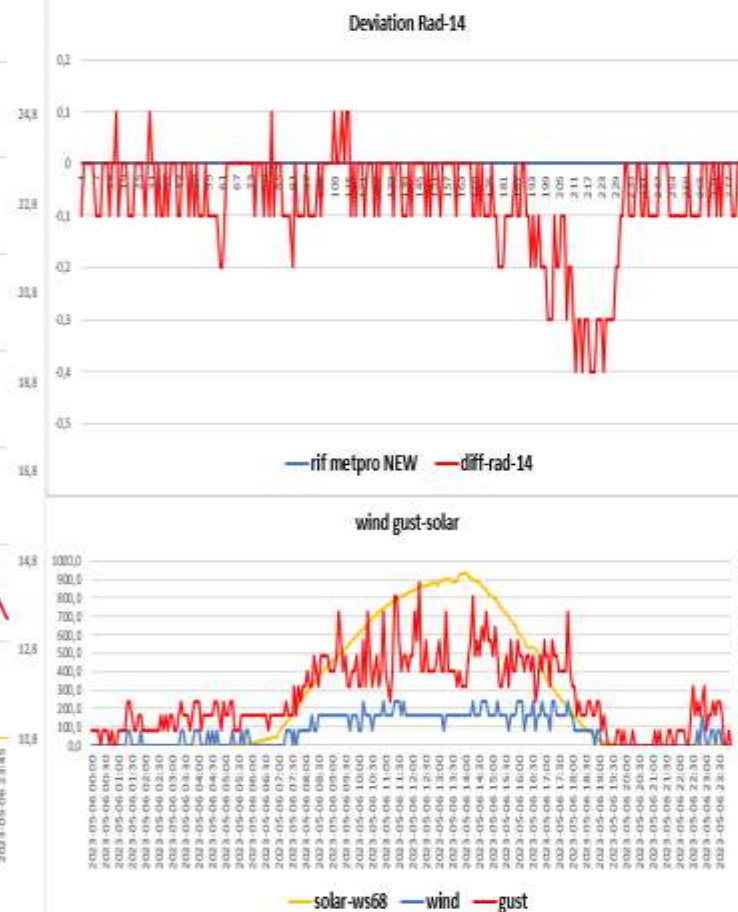
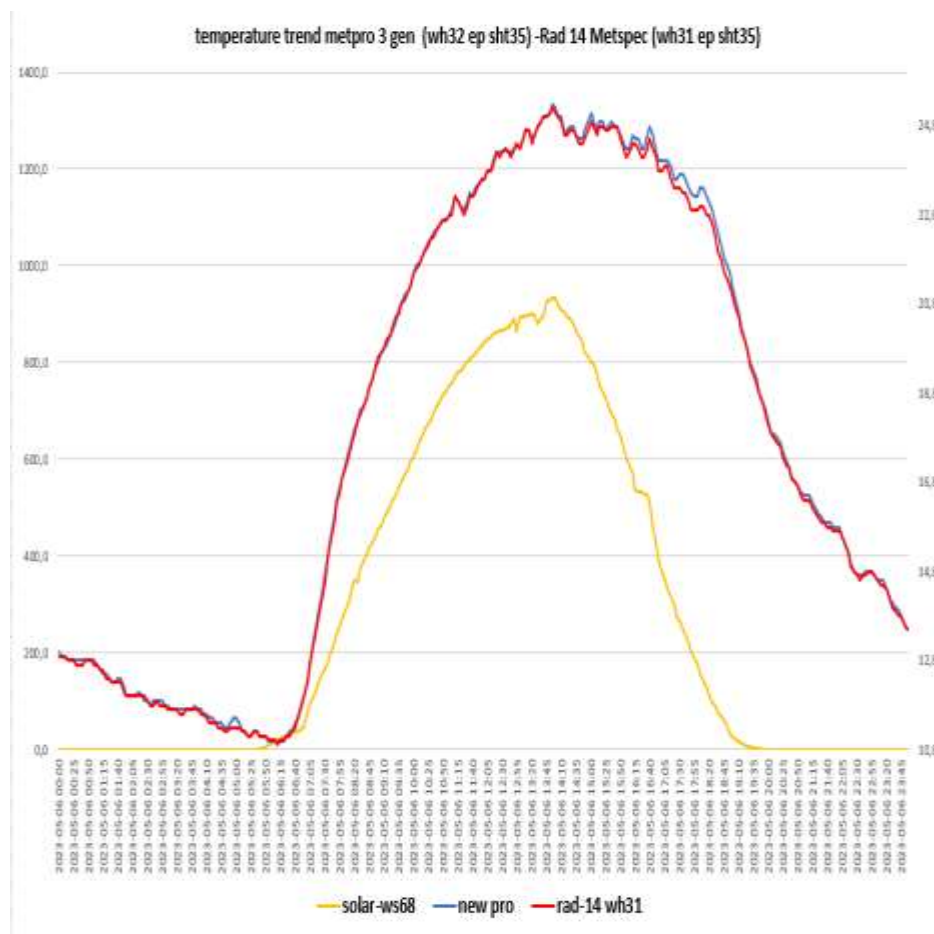
Davis vp2 pro- Metpro old (Probe sensor wh32EP ecowitt)



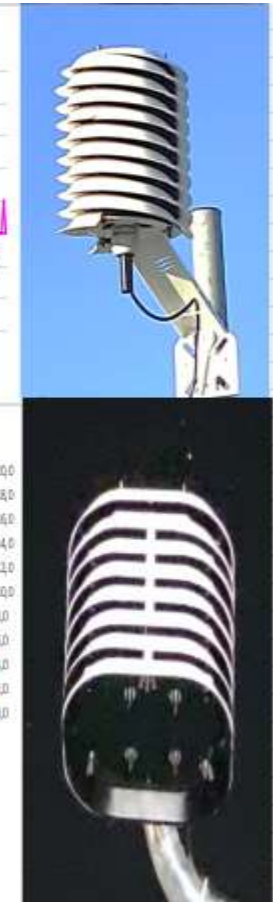
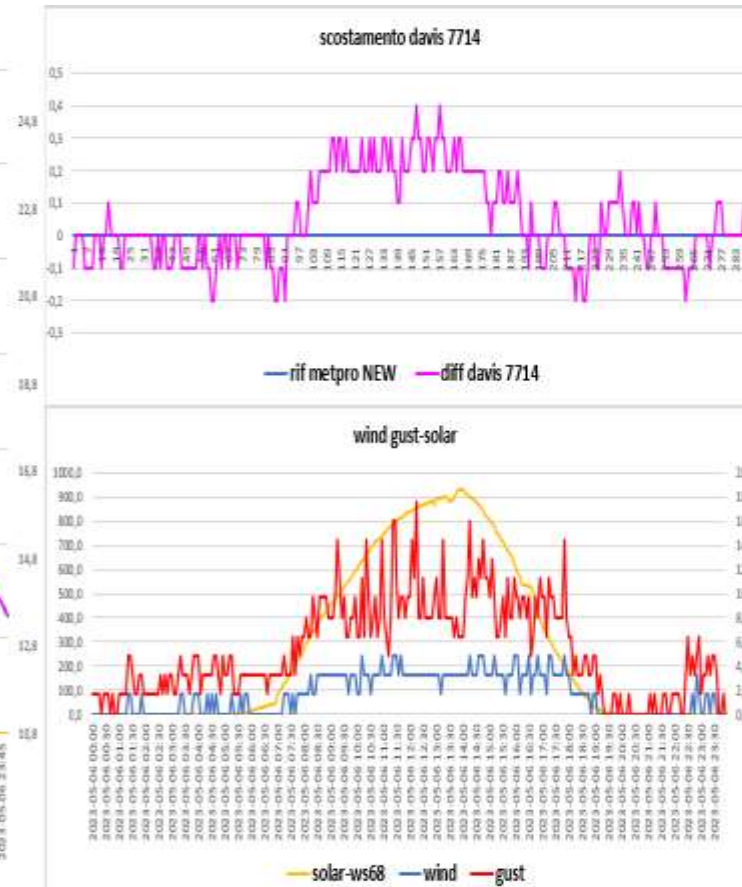
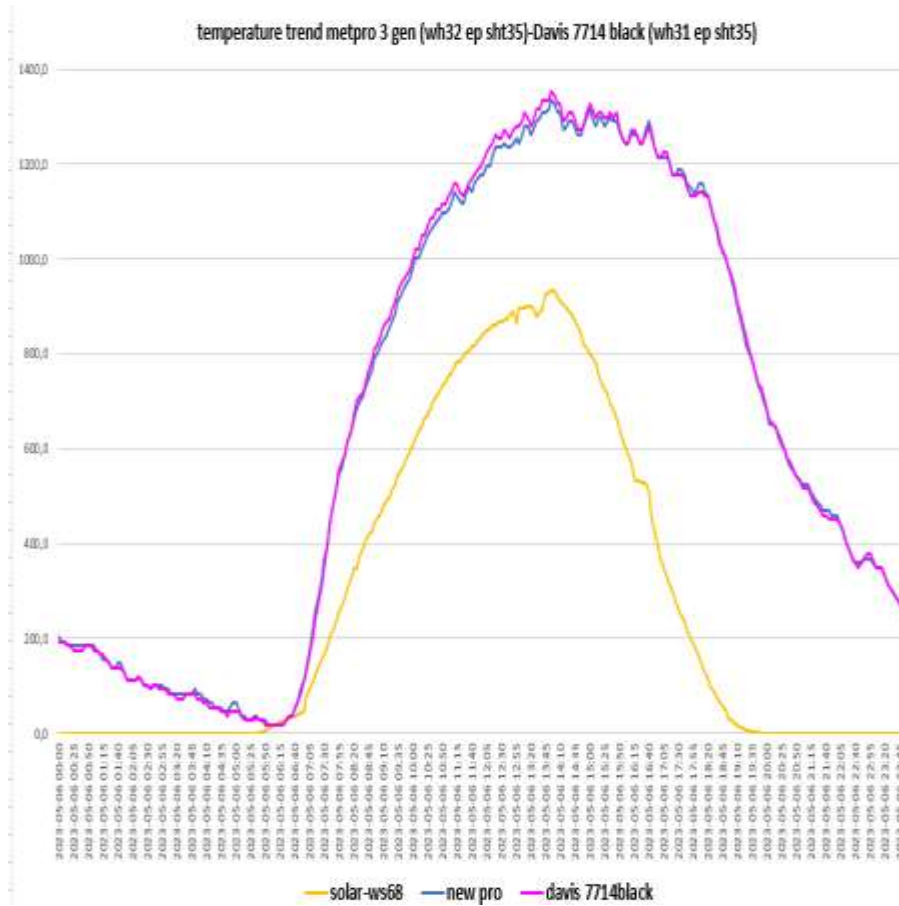
Metpro NEW (Probe sensor wh32EP ecowitt)- FARS meteoshield pro 3° gen (Probe sensor wh31EP ecowitt)



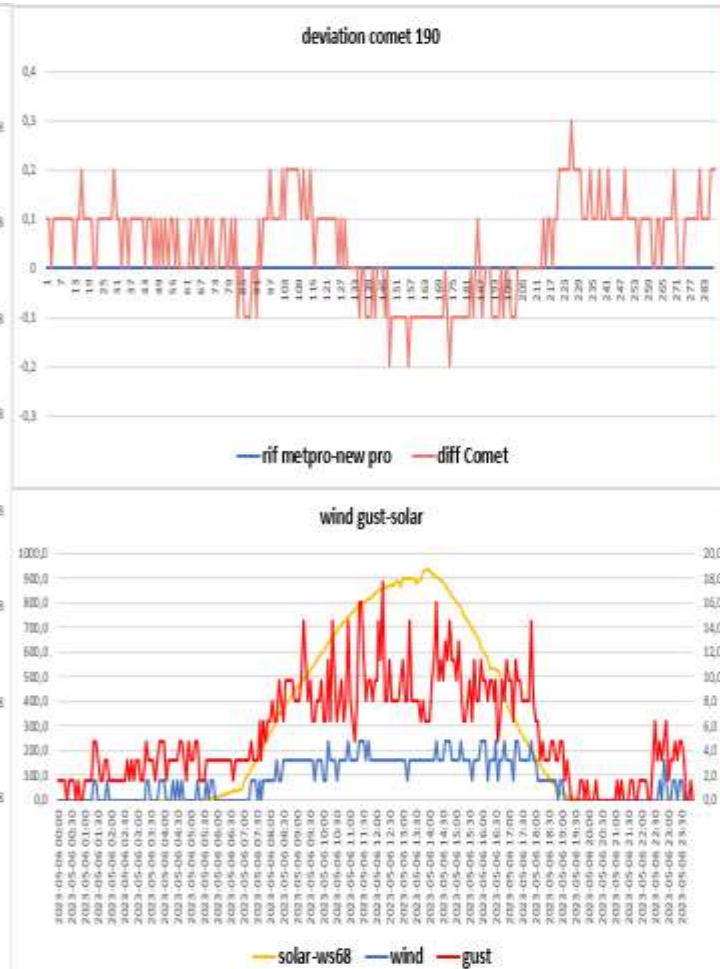
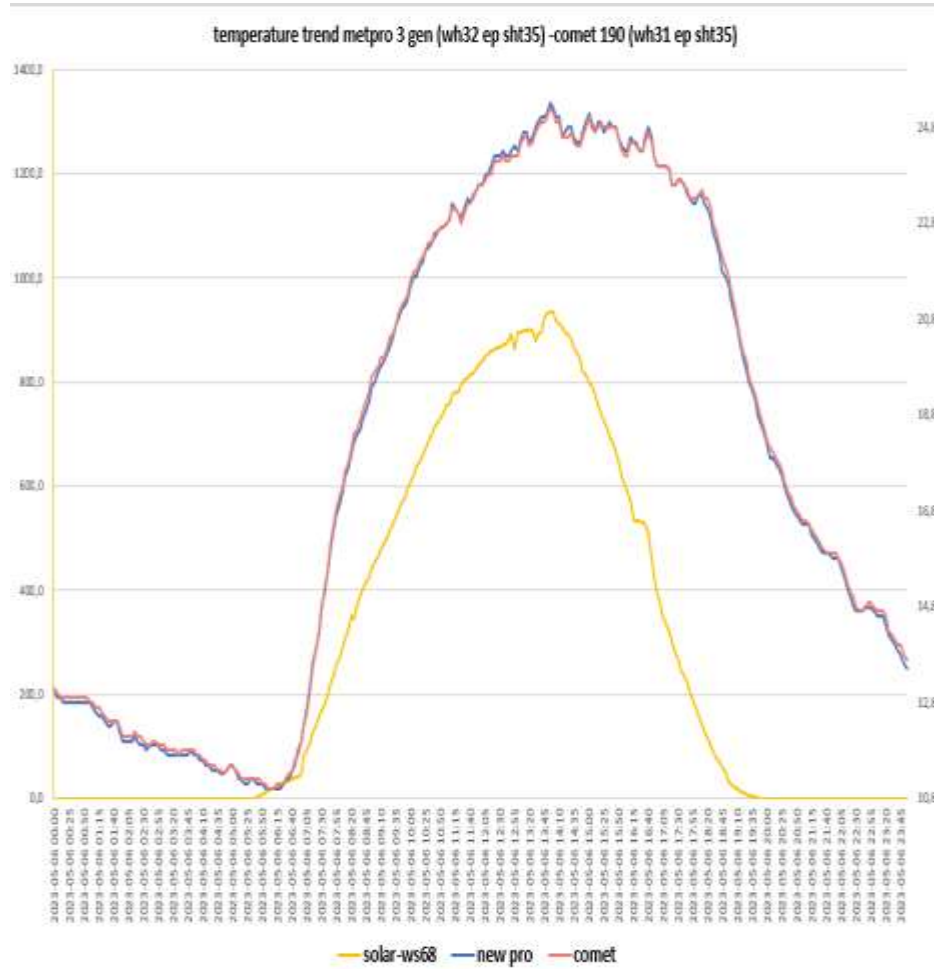
Metpro NEW (Probe sensor WH32 EP ecowitt) – Rad14 Metspec (Probe sensor wh31EP-WH31ep ecowitt)



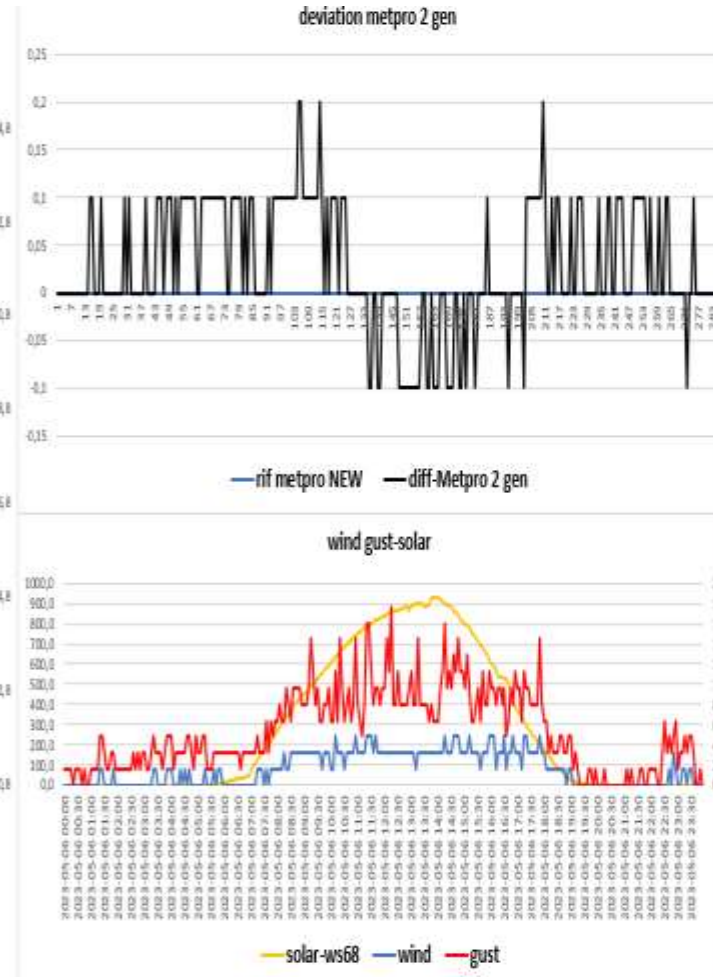
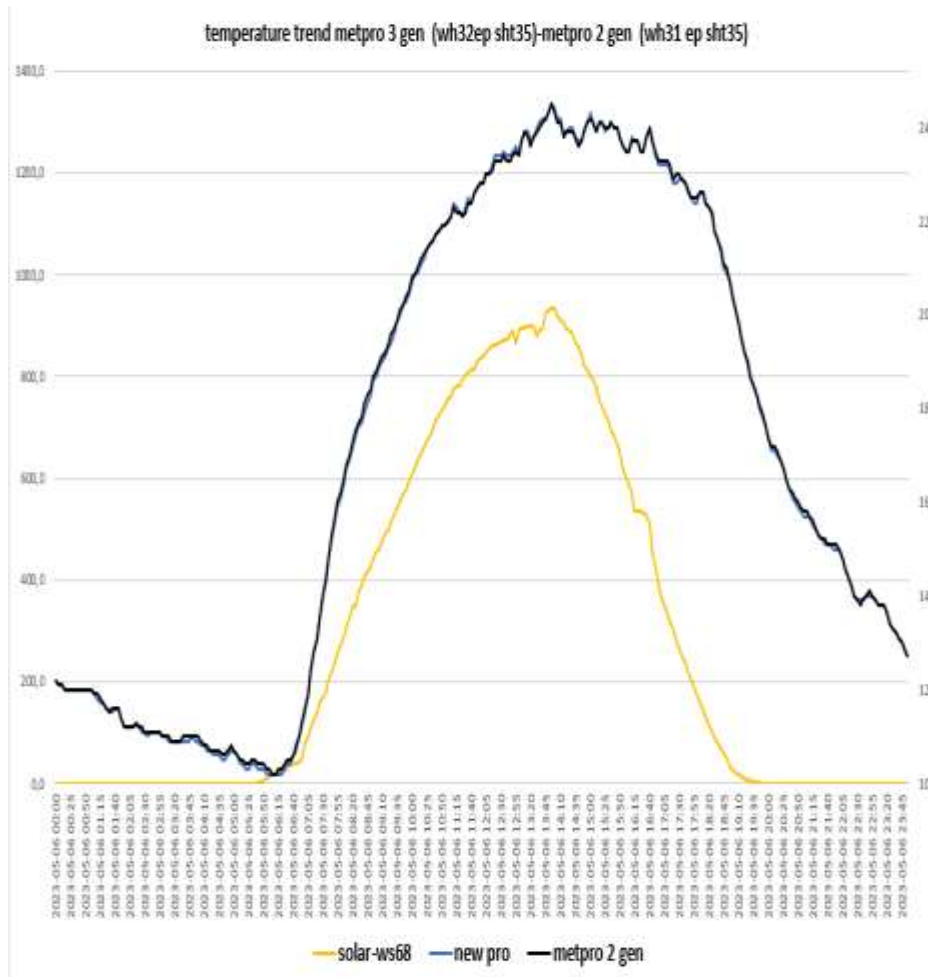
Metpro NEW (Probe sensor wh32 EP ecowitt)-DAVIS 7714 Black(Probe sensor wh31EP ecowitt)-



NEW PRO BARANI (probe sensor wh31 EP ecowitt)- COMET 190 probe sensor wh32 EP



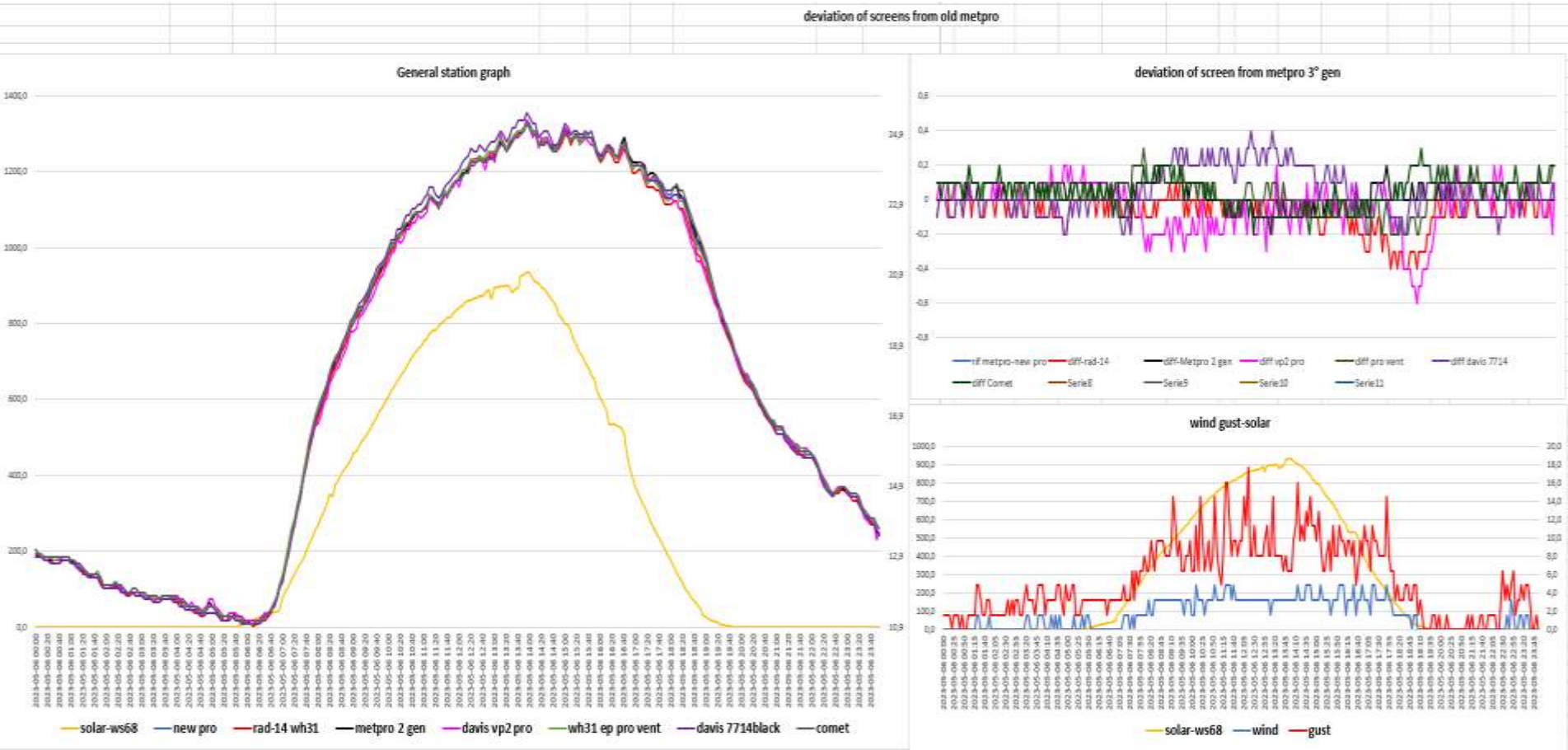
METPRO OLD (probe sensor wh32EP ecowitt) -RAD-02 (probe sensor wh31 EP ecowitt)



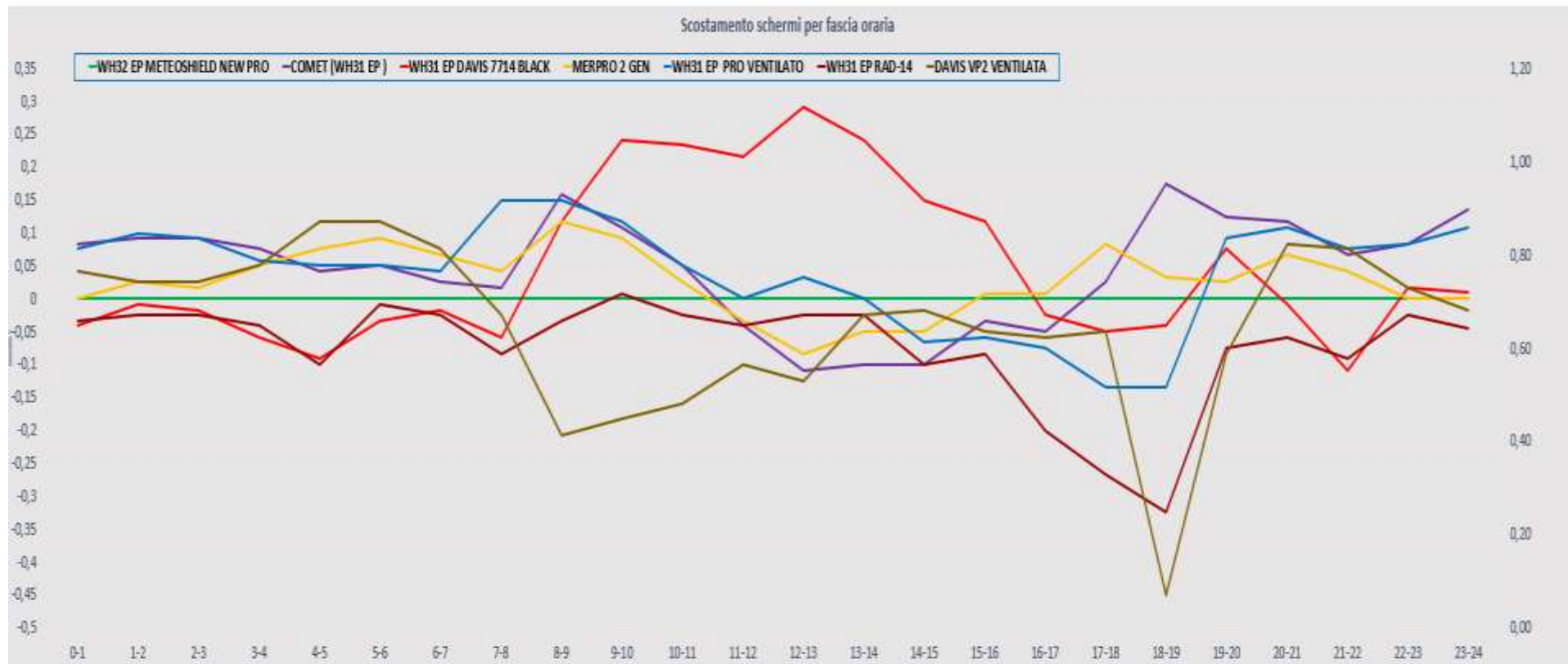
STATISTICAL DATA (MAXIMUM MINIMUM AVERAGES)

vento medio 24H	1,6 km/h	vento medio dalle ore 08:00 alle 18:00	3,3 km/h	dalle ore 08:00 alle 18:00								scostamenti dalle ore 08:00 alle 18:00									
media met pro New	18,0	schermo di riferimento		media met pro 3° gen	23,0																
max met pro New	25,3		max met pro 3° gen	25,3																	
min met pro New	11,0		min met pro 3° gen	16,9																	
media davis vp2 pro vent	17,996	scost medio davis vp2 pro vent	-0,04	media davis vp2 pro vent	22,9	scost medio davis vp2 pro vent	-0,1	media davis7714black	23,2	scost medio davis 7714 black	0,2										
max davis vp2pro vent	25,3	scost max davis vp2 pro vent	0,2	max davis vp2 pro vent	25,3	scost max davis vp2 pro vent	0,2	max davis7714 black	25,5	scost max davis 7714 black	0,4										
min davis vp2 pro vent	11,1	scost min davis vp2 pro vent	-0,6	min davis vp2 pro vent	16,7	scost min davis vp2 pro vent	-0,3	min davis 7714 black	17,0	scost min davis 7713 black	-0,2										
media rad-14	17,961	scost medio rad-14	-0,07	media Rad-14	23,0	scost medio rad-14	-0,1	media comet	23,0	scost medio comet	0,0										
max rad-14	25,2	scost max rad-14	0,1	max rad-14	25,2	scost max rad-14	0,1	max comet	25,2	scost max comet	0,2										
min rad-14	10,9	scost min rad-14	-0,4	min Rad-14	16,9	scost min rad-14	-0,4	min comet	17,1	scost min comet	-0,2										
media metpro 2 gen	18,035	scost medio Metpro 2 gen	0,03	media Metpro 2 gen	23,1	scost medio Metpro 2 gen	0,0	media pro ventilato	23,1	scost medio pro vent	0,0										
max Metpro 2 gen	25,3	scost max Metpro 2 gen	0,2	max Metpro 2 gen	25,3	scost max Metpro 2 gen	0,2	max pro ventilato	25,2	scost max pro vent	0,3										
min Metpro 2 gen	11	scost min Metpro 2 gen	-0,1	min Metpro 2 gen	17,0	scost min Metpro 2 gen	-0,1	min pro ventilato	17,2	scost min pro vent	-0,2										
media pro ventilato	18,075	scost medio pro vent	0,04																		
max pro ventilato	25,2	scost max pro vent	0,3																		
min pro ventilato	11	scost min pro vent	-0,2																		
media davis 7714	18,082	scost medio davis 7714	0,05																		
max davis 7714	25,5	scost max davis 7714	0,4																		
min davis 7714	11	scost min davis 7714	-0,2																		

general summary



screen shift by time slot



RAIN 24h

Pluviometro ,manuale TFA	0.0 mm
Pluviometro vp2 pro	0,0 mm
Pluviometro wh40 ecowitt suolo	0,0 mm
Meteorain Barani	0,0 mm
Pluviometro gw1001 ecowitt	0,0 mm

leaf wetness-leaf wetness-Pressure

