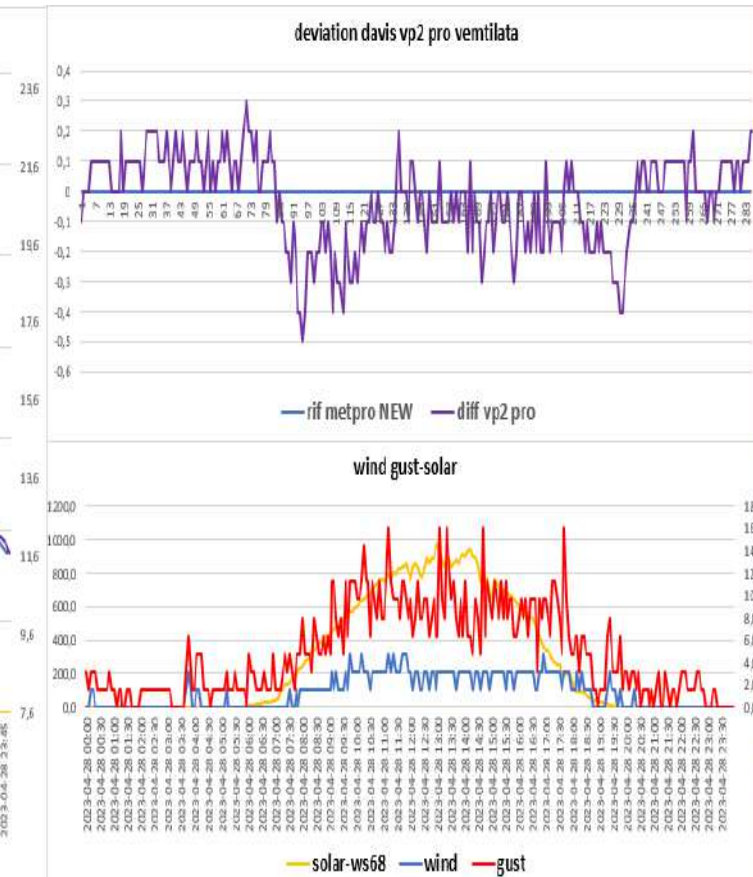
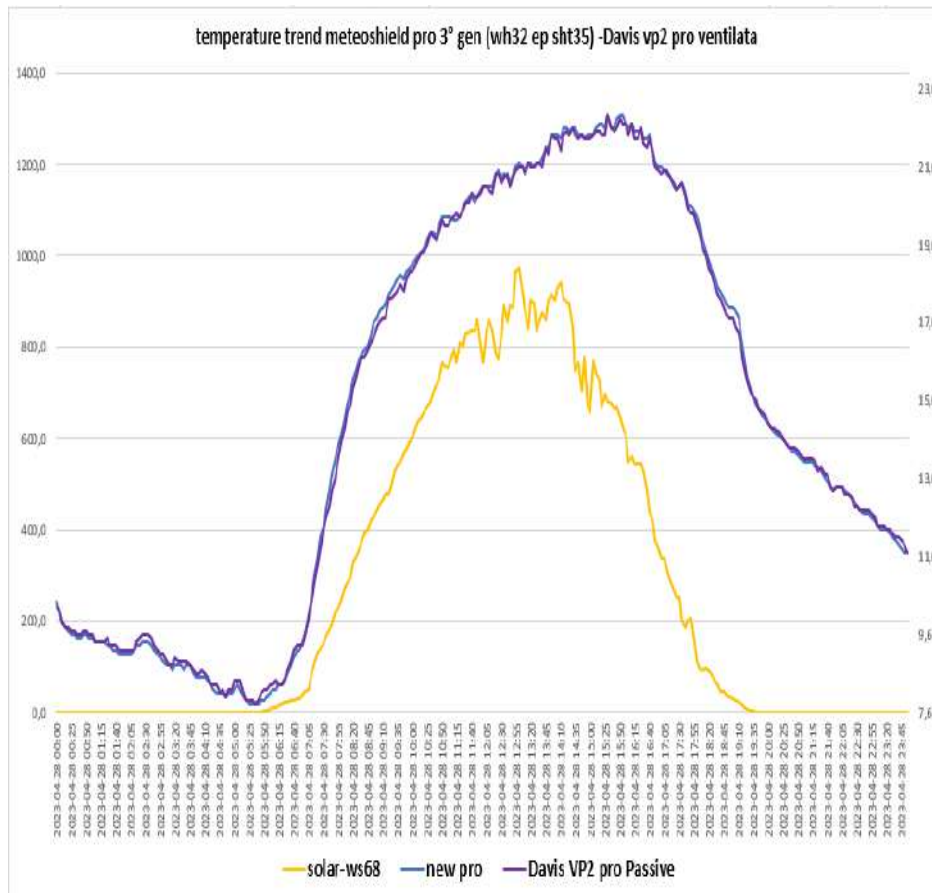
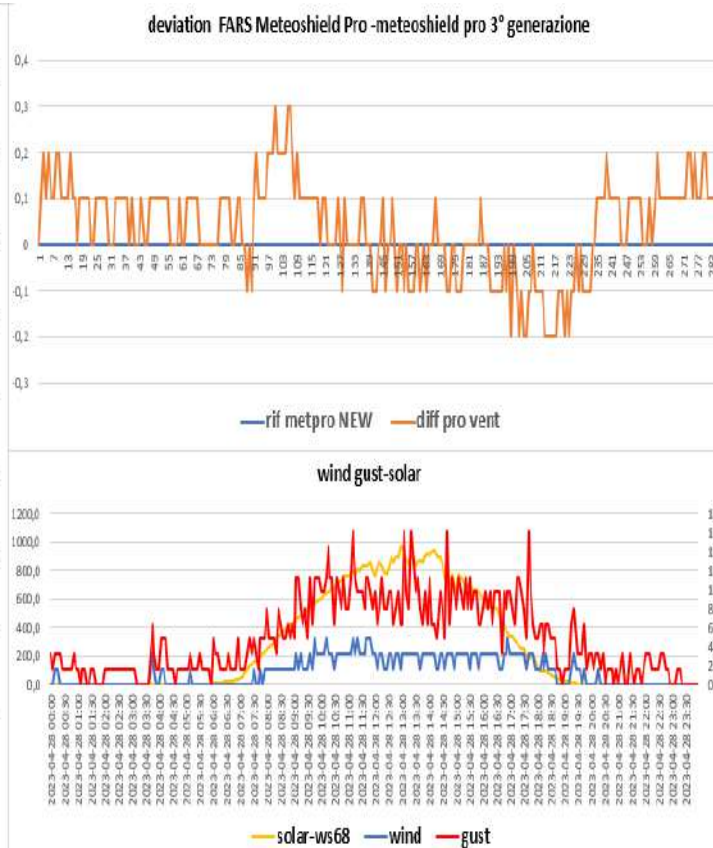
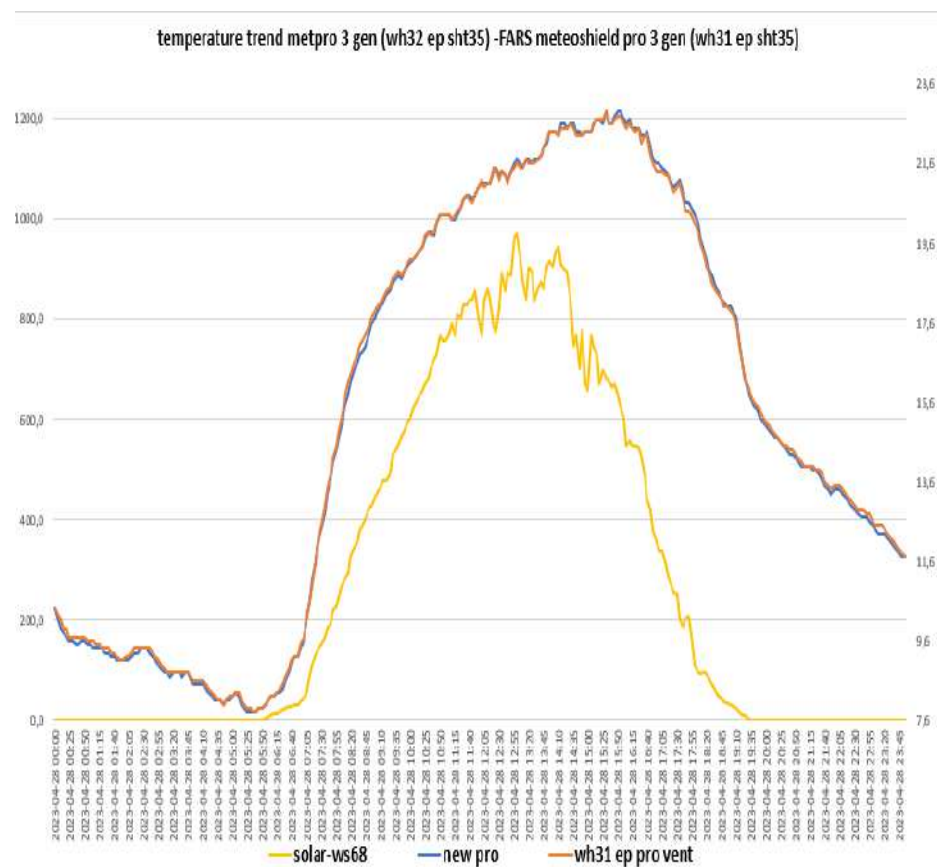


# SCREEN TREND OF 28-04-2023

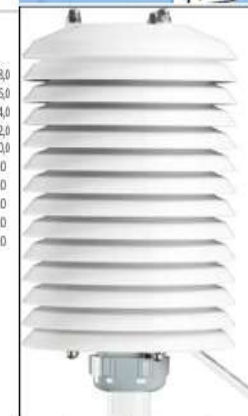
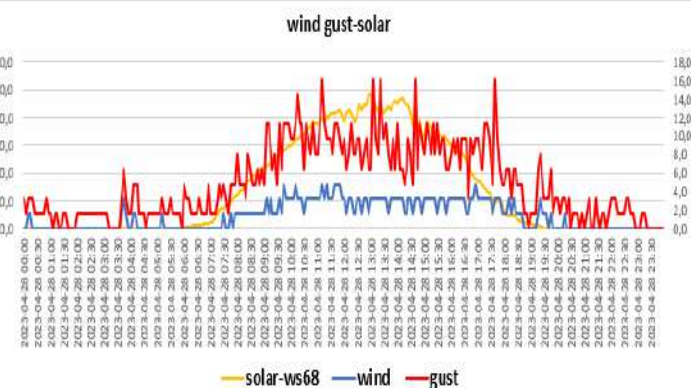
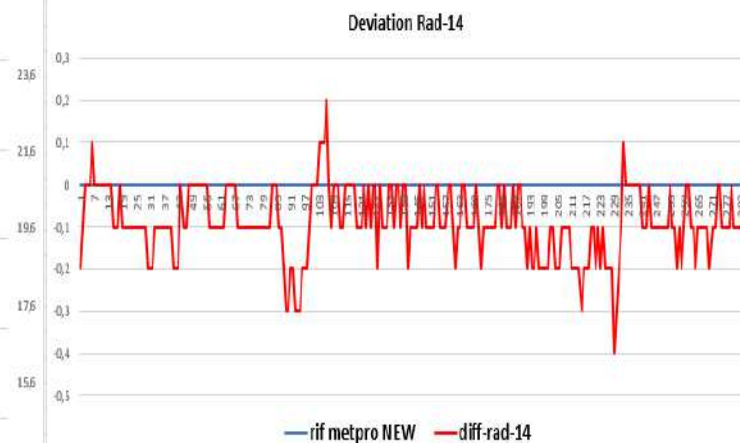
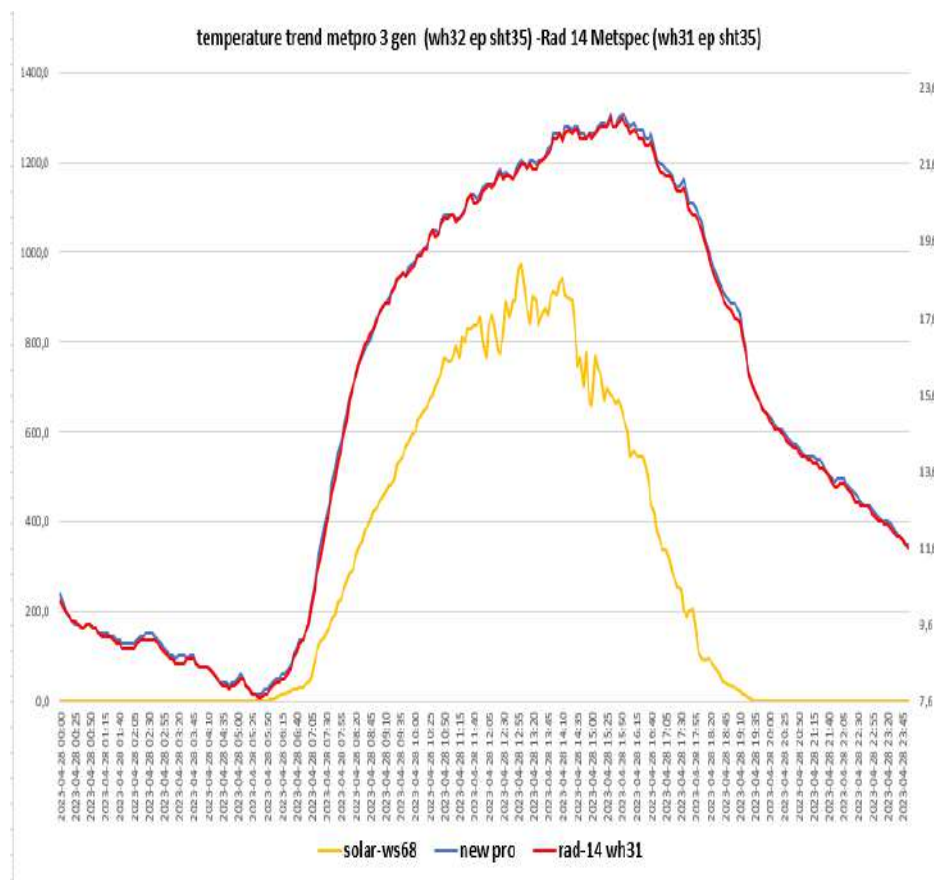
Davis vp2 pro ventilata- Metpro 3 gen (Probe sensor wh32EP ecowitt)



## Metpro 3 gen (Probe sensor wh32EP ecowitt)- FARS meteoshield pro 3° gen (Probe sensor wh31EP ecowitt)

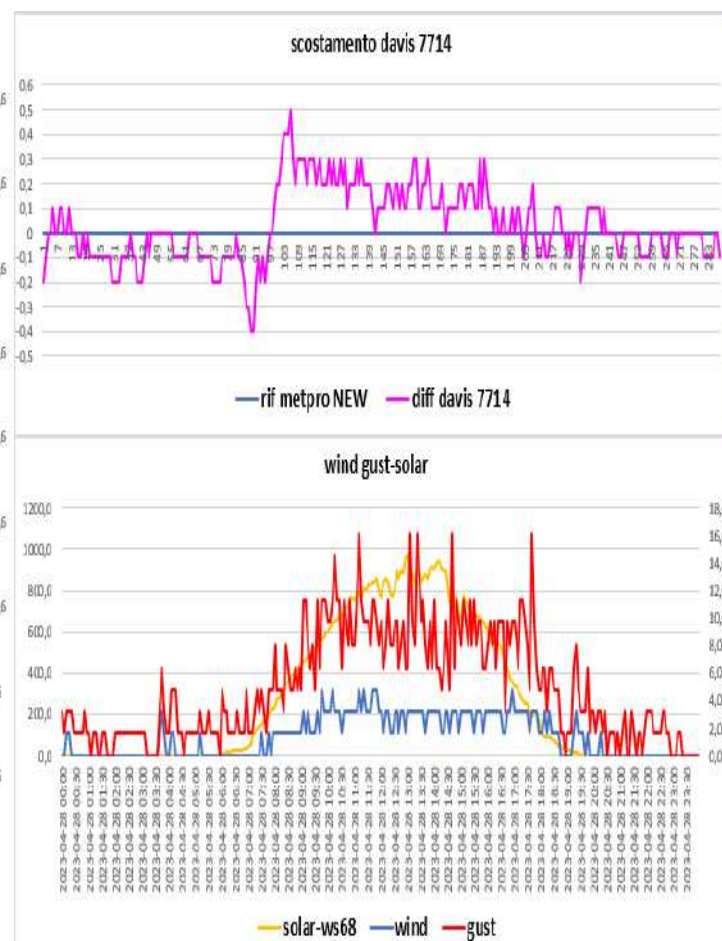
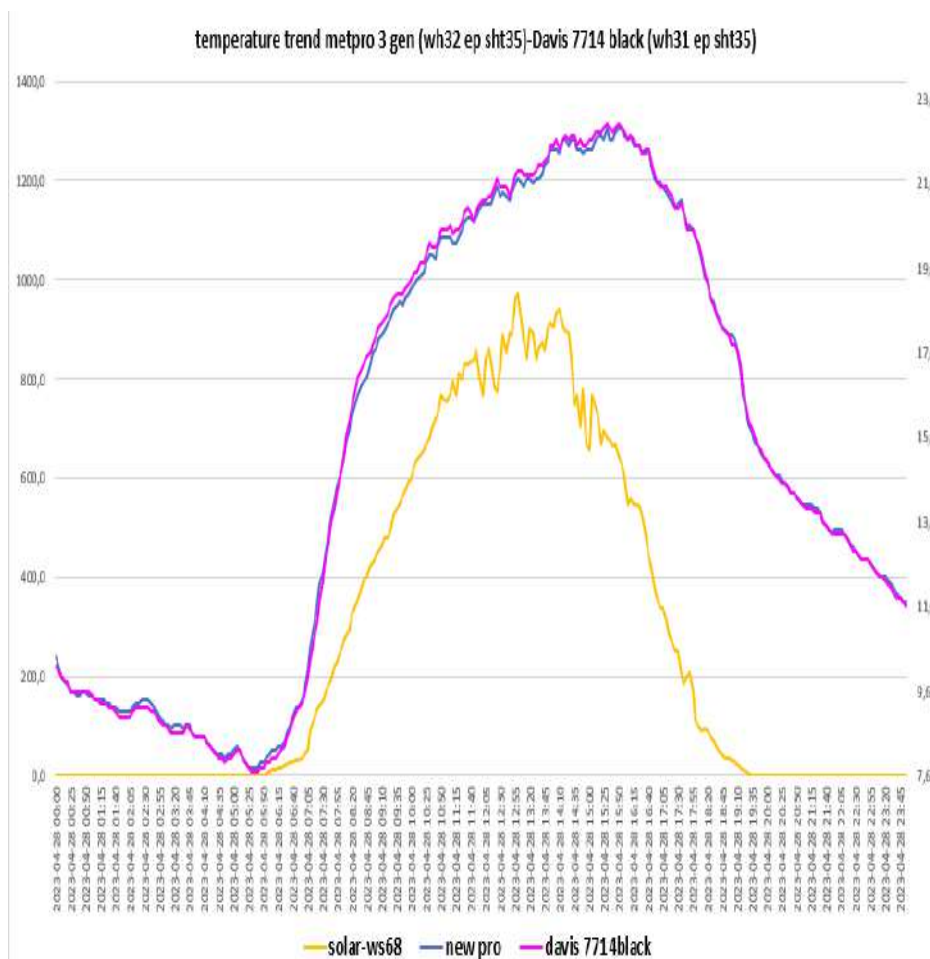


# Metpro 3 gen (Probe sensor WH32 EP ecowitt) – Rad14 Metspec (Probe sensor wh31EP-WH31ep ecowitt)



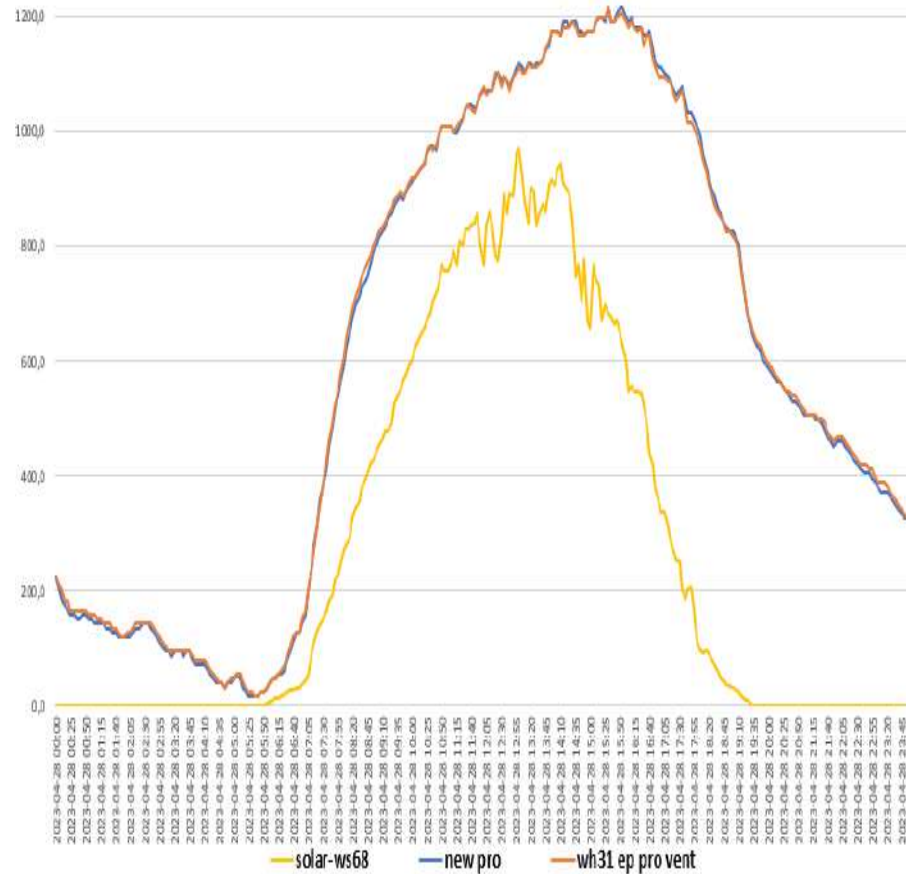


# Metpro 3 gen (Probe sensor wh32 EP ecowitt)-DAVIS 7714 Black(Probe sensor wh31EP ecowitt)-

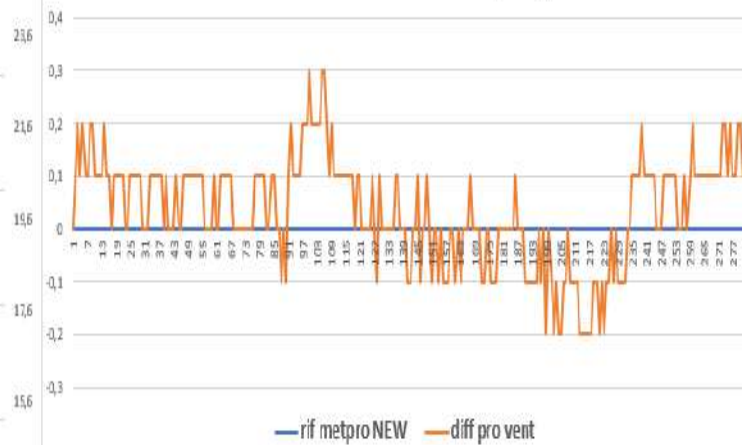


# METPRO 3 GEN (probe sensor wh32 EP ecowitt)- COMET 190 (probe sensor wh31 EP)

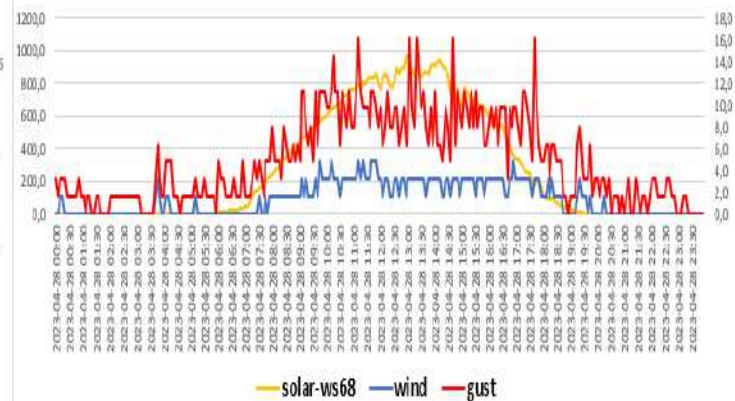
temperature trend metpro 3 gen (wh32 ep sht35) -FARS meteoshield pro 3 gen (wh31 ep sht35)



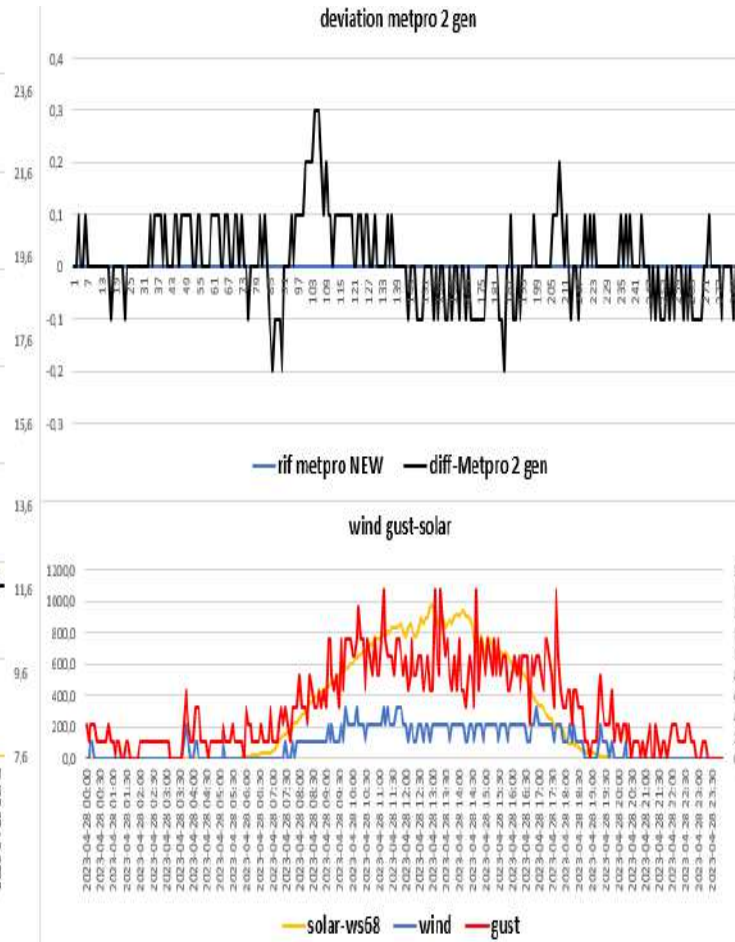
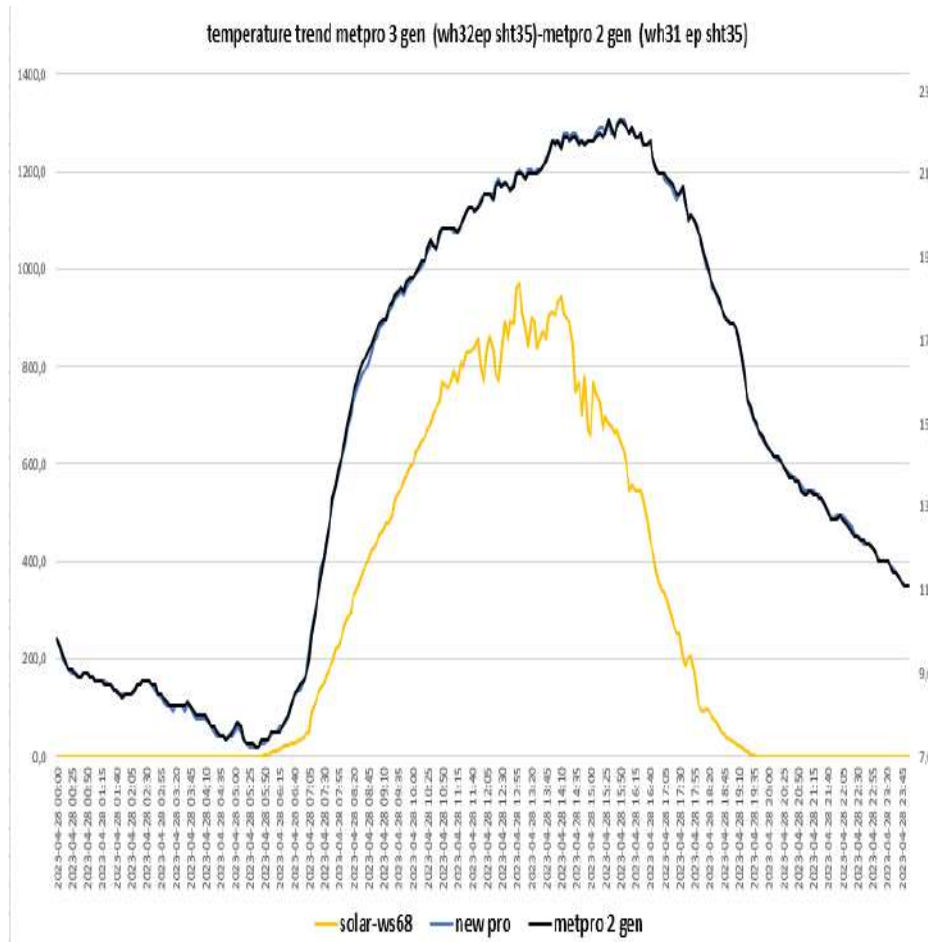
deviation FARS Meteoshield Pro -meteoshield pro 3° generazione



wind gust-solar



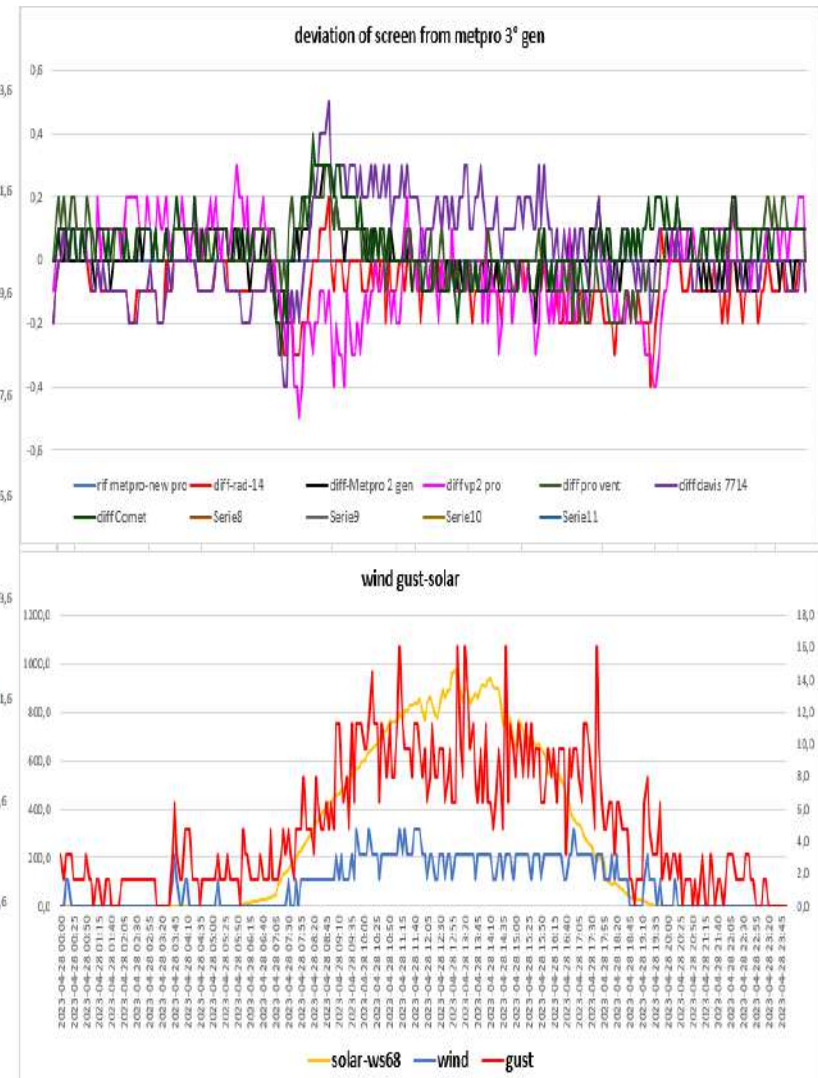
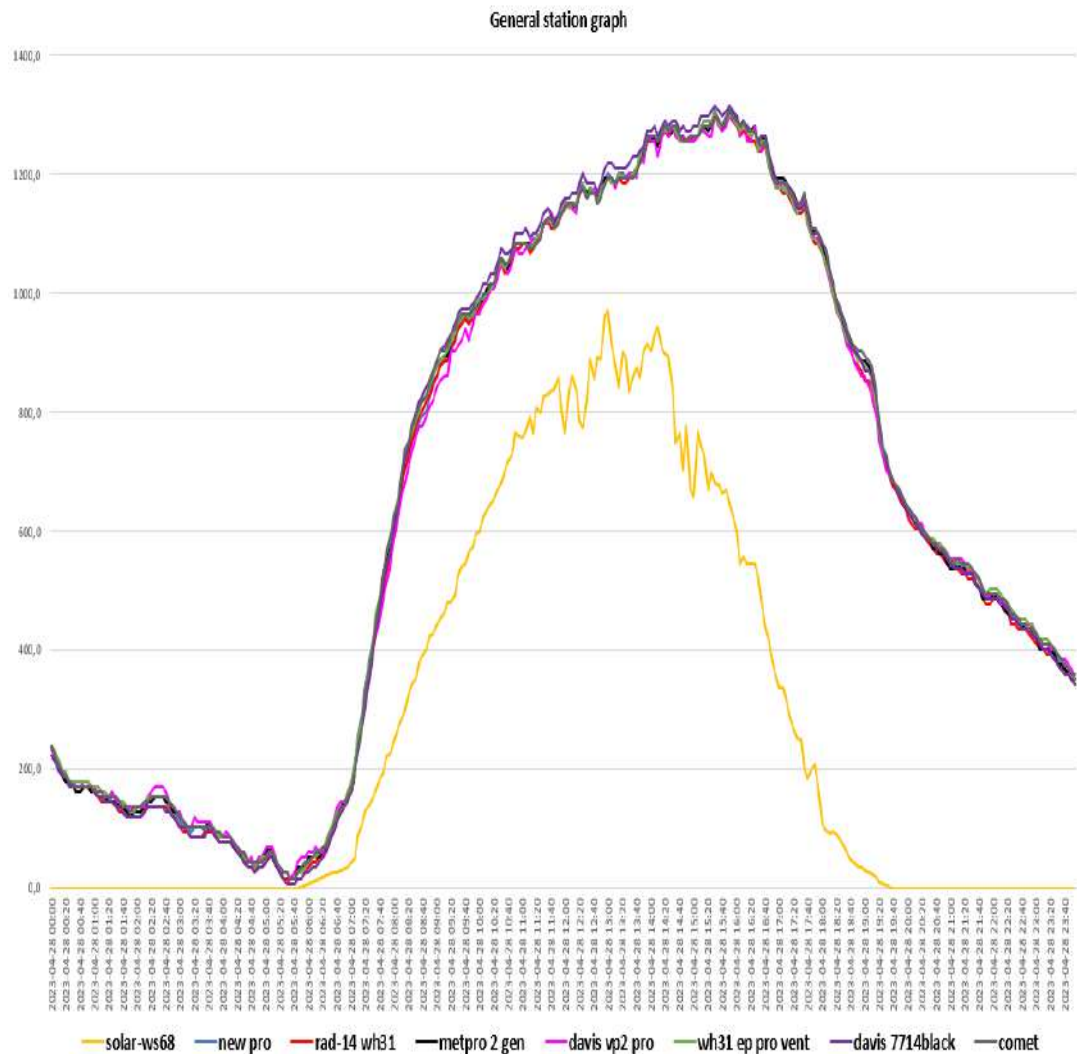
# METPRO 3 GEN (probe sensor wh32EP ecowitt) -METPRO 2 GEN (probe sensor dp50 EP ecowitt)





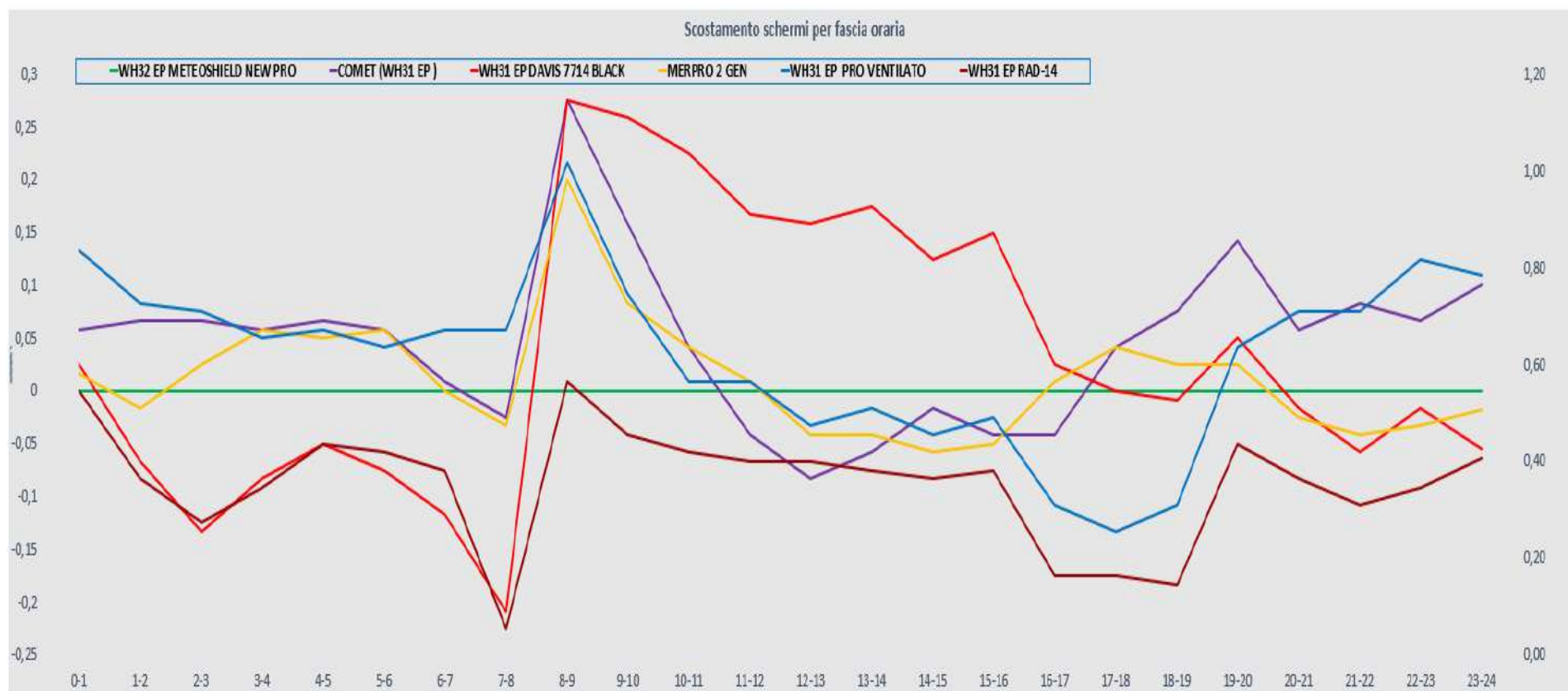


## general summary





## screen shift by time slot



**RAIN 24h**

<b>Pluviometro ,manuale TFA</b>	<b>0.0 mm</b>
<b>Pluviometro vp2 pro</b>	<b>0,0 mm</b>
<b>Pluviometro wh40 ecowitt suolo</b>	<b>0,0mm</b>
<b>Meteorain Barani</b>	<b>0,0 mm</b>
<b>Pluviometro gw1001 ecowitt</b>	<b>0,0 mm</b>

ground temperature-leaf wetness-Pressure

