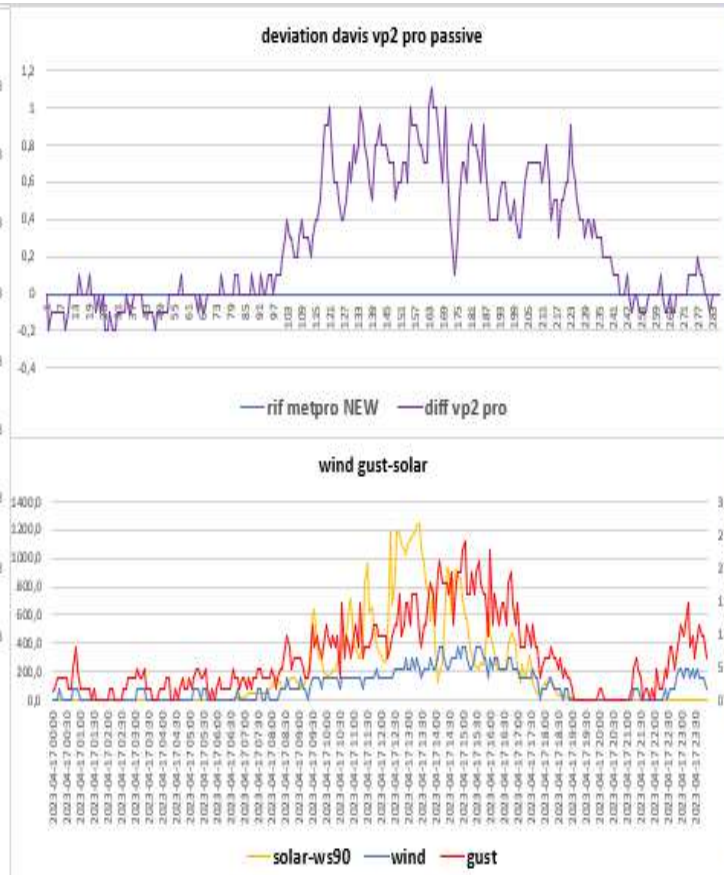
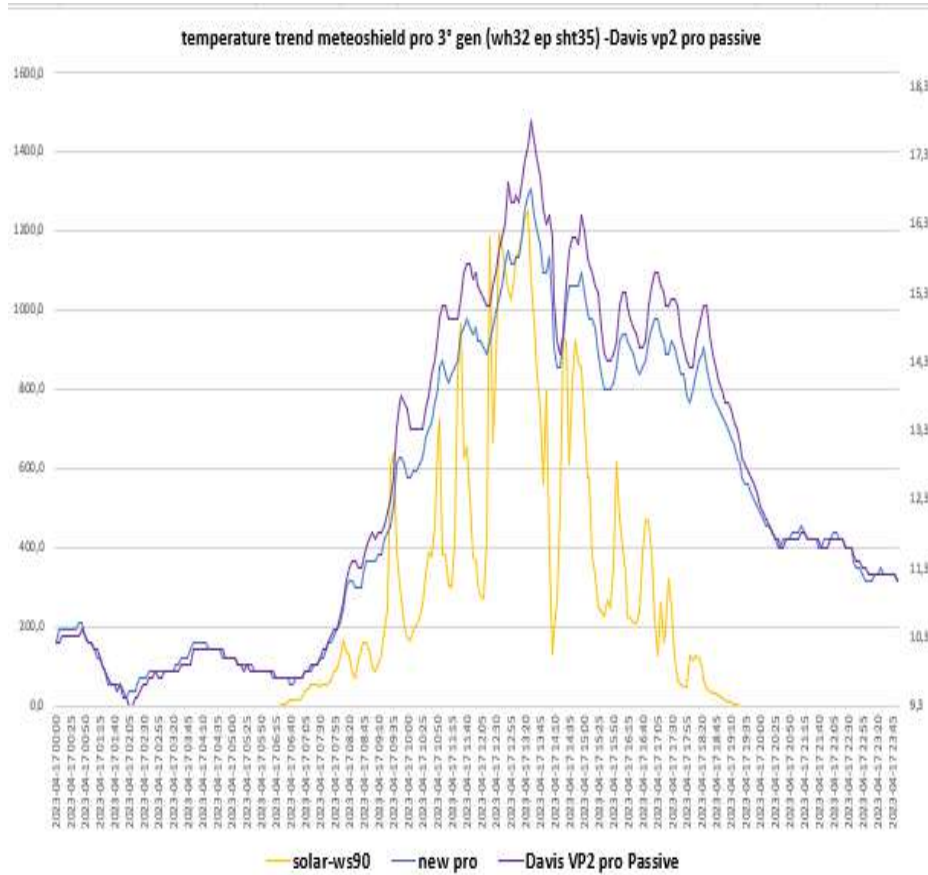
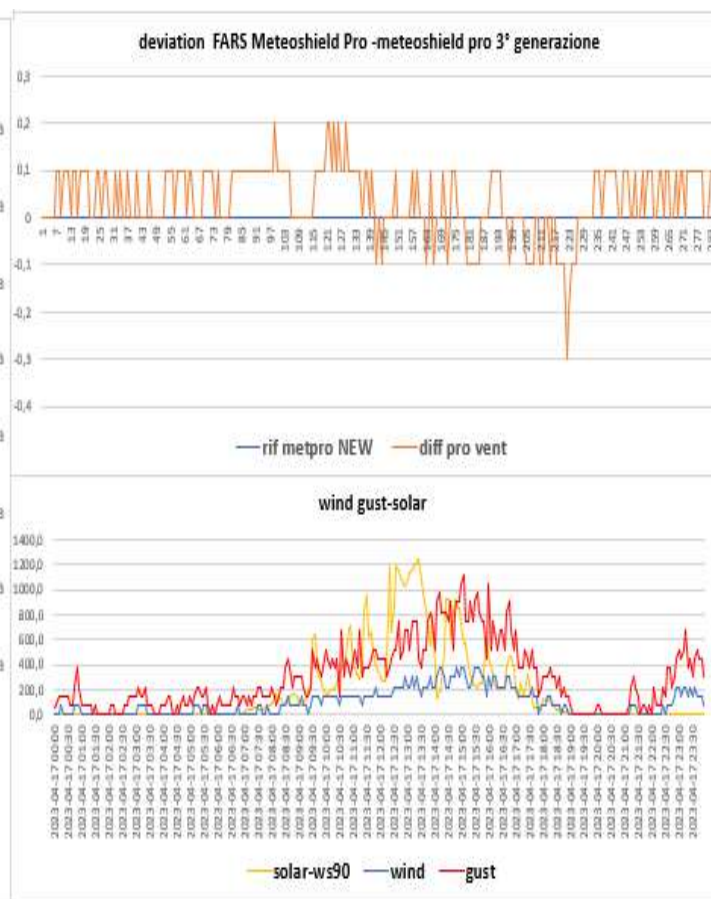
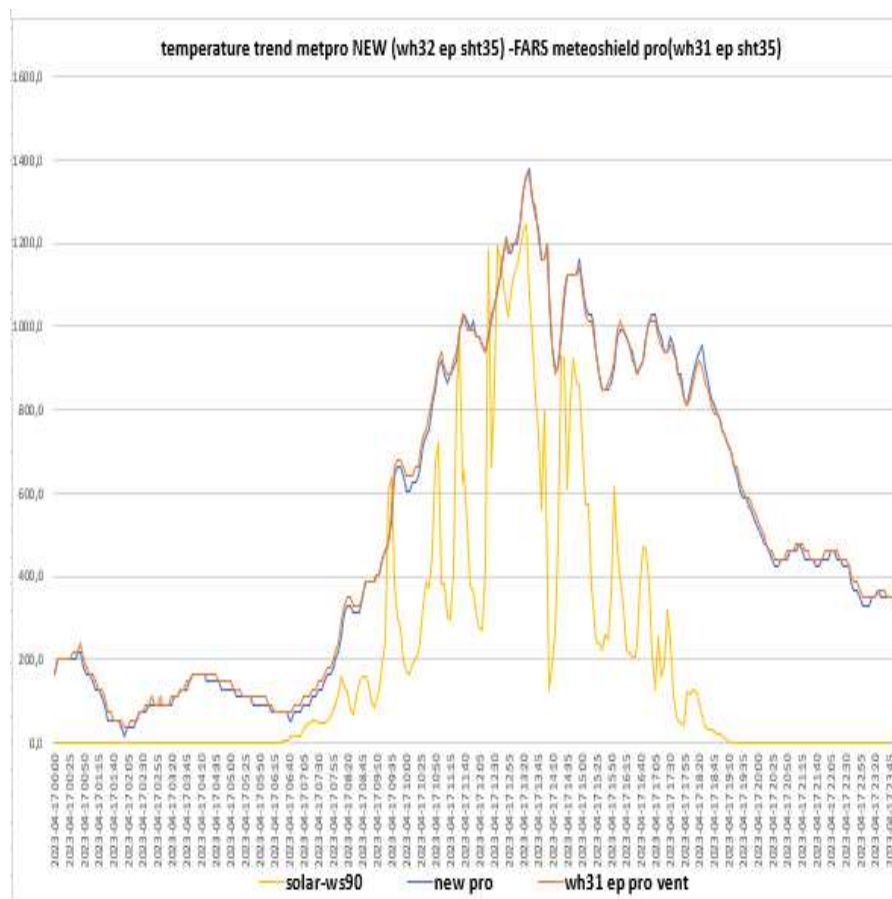


## SCREEN TREND OF 17-04-2023

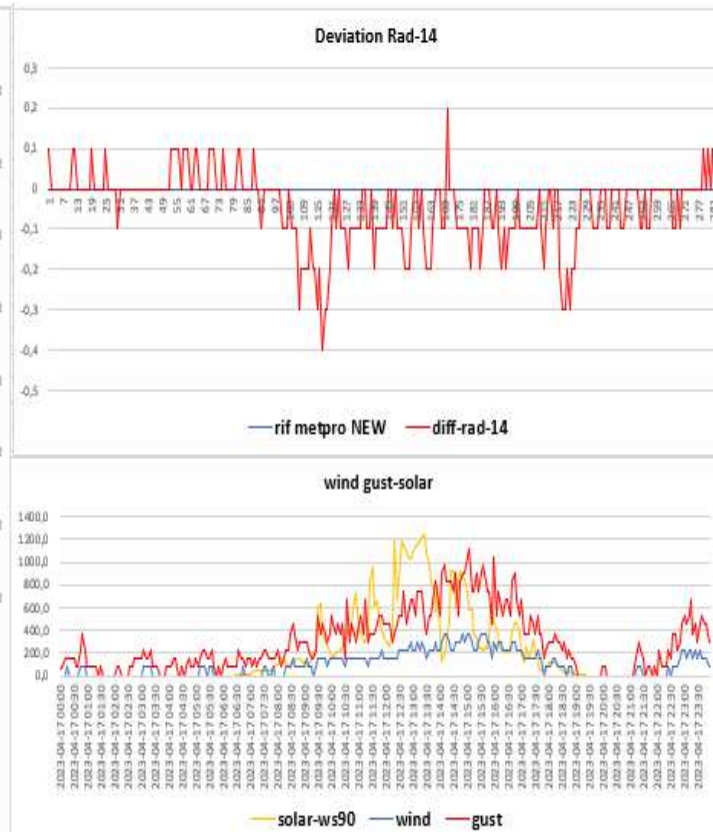
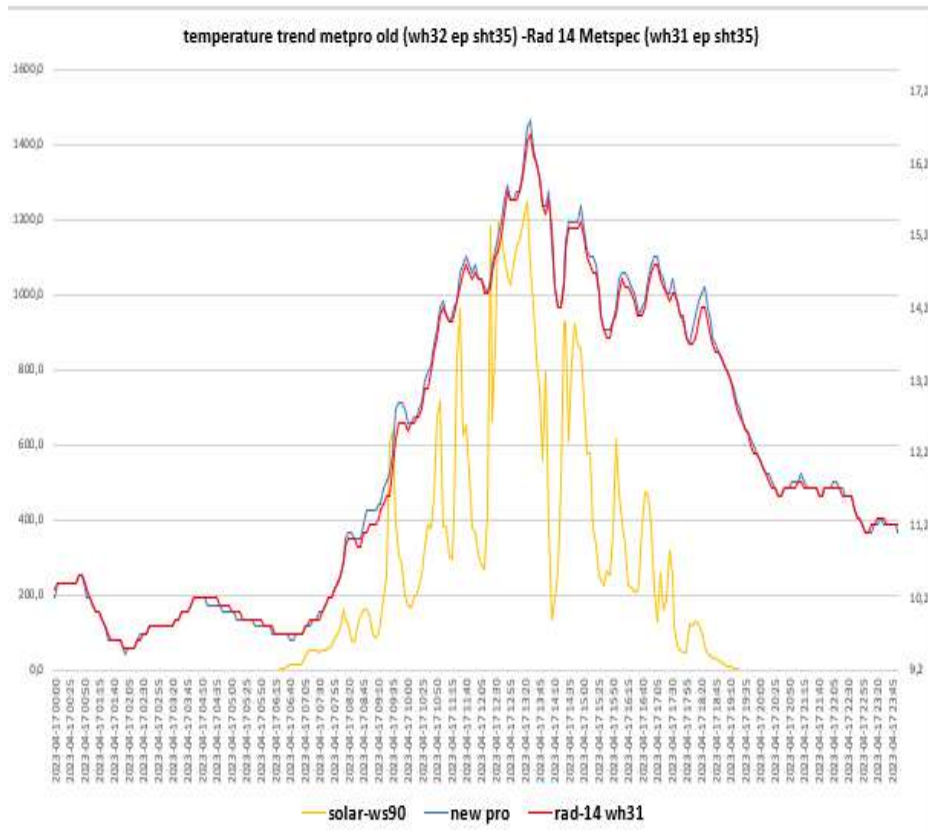
Davis vp2 pro- Metpro old (Probe sensor wh32EP ecowitt)



# Metpro NEW (Probe sensor wh32EP ecowitt)- FARS meteoshield pro 3° gen (Probe sensor wh31EP ecowitt)

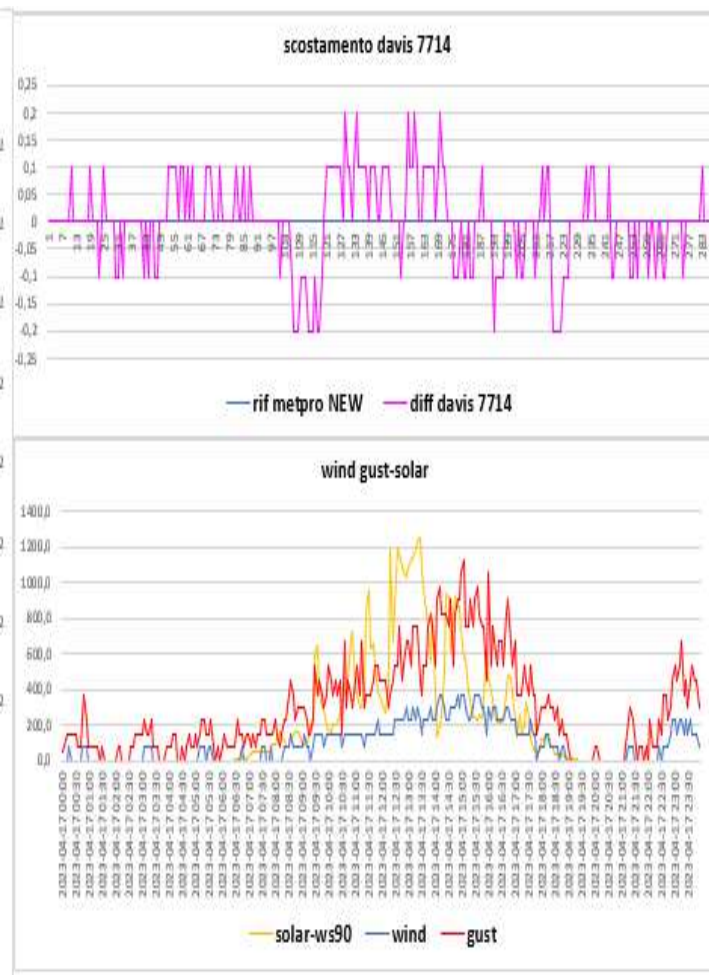
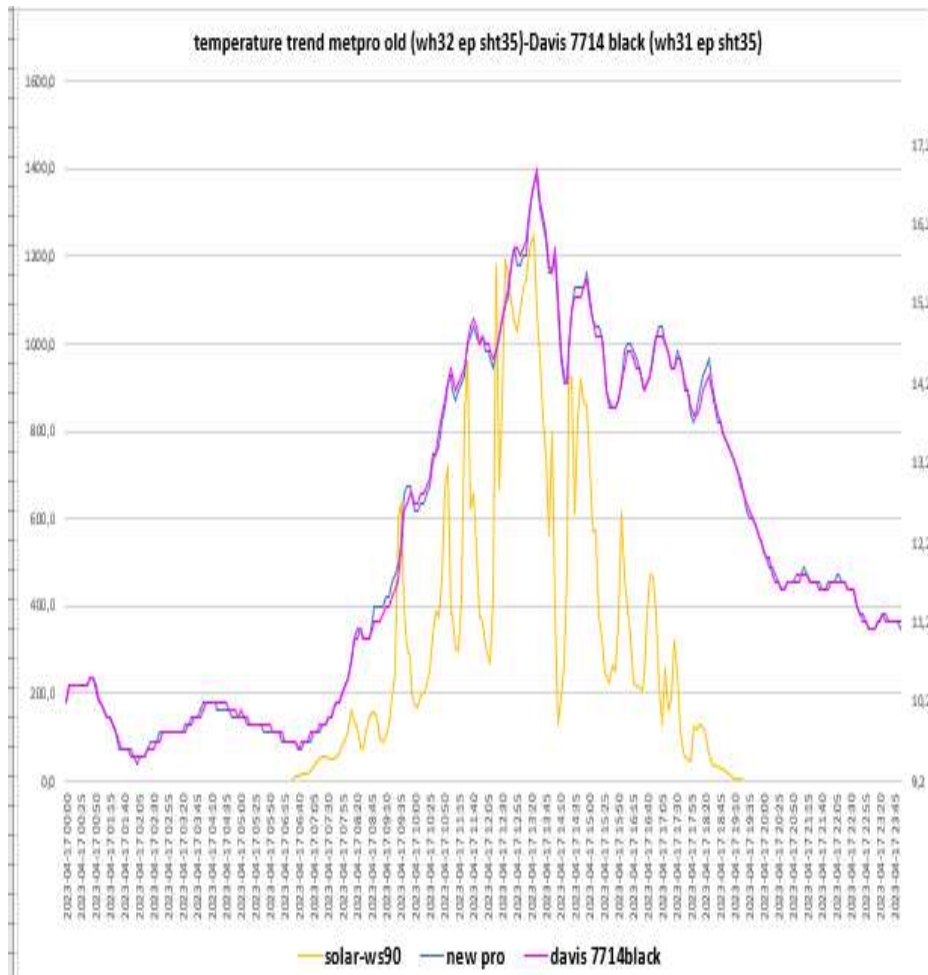


# Metpro NEW (Probe sensor WH32 EP ecowitt) – Rad14 Metspec (Probe sensor wh31EP-WH31ep ecowitt)

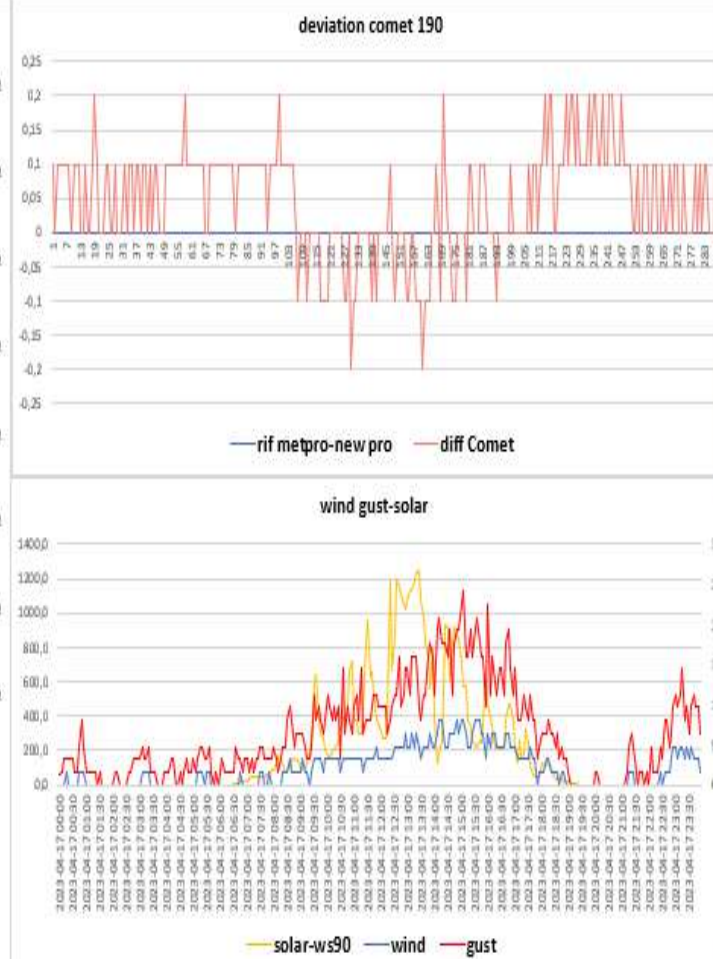
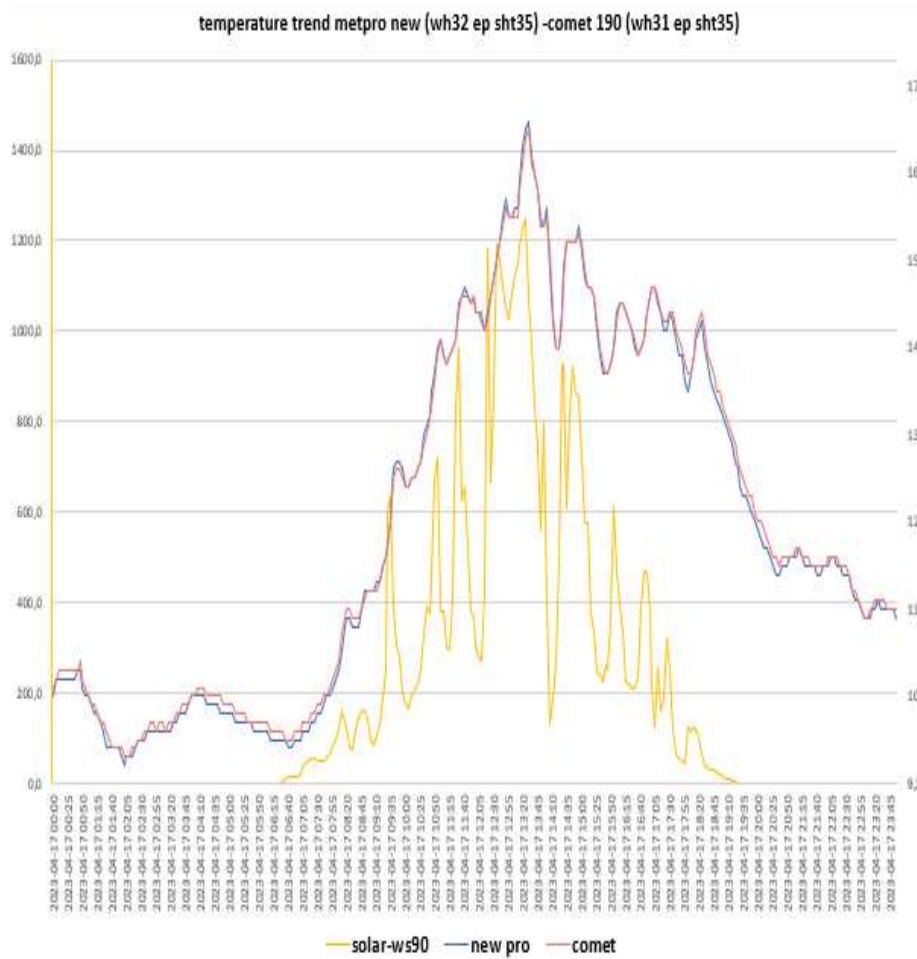




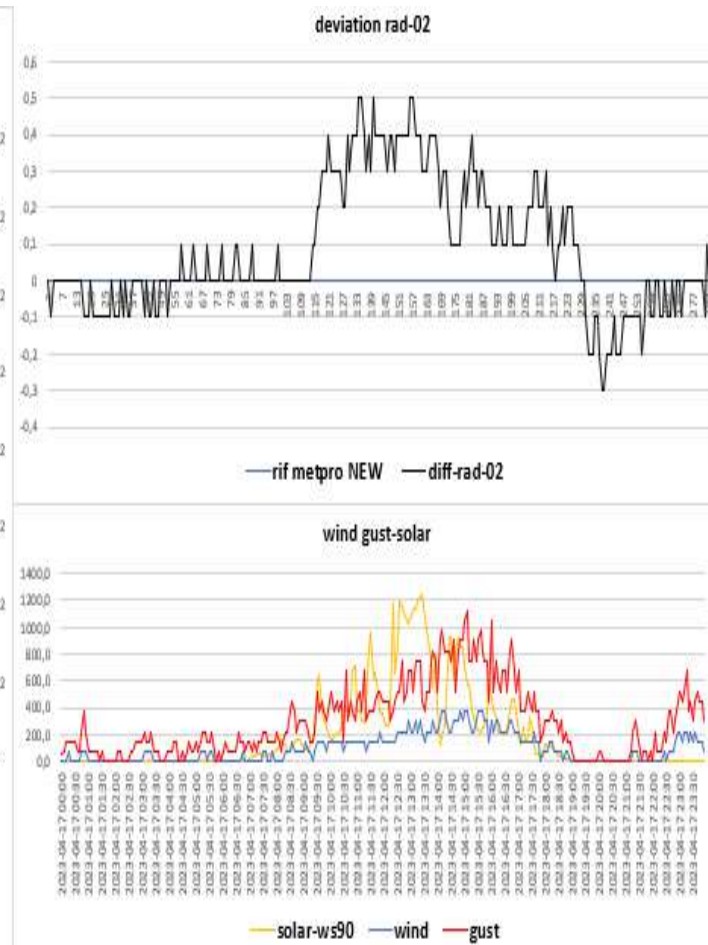
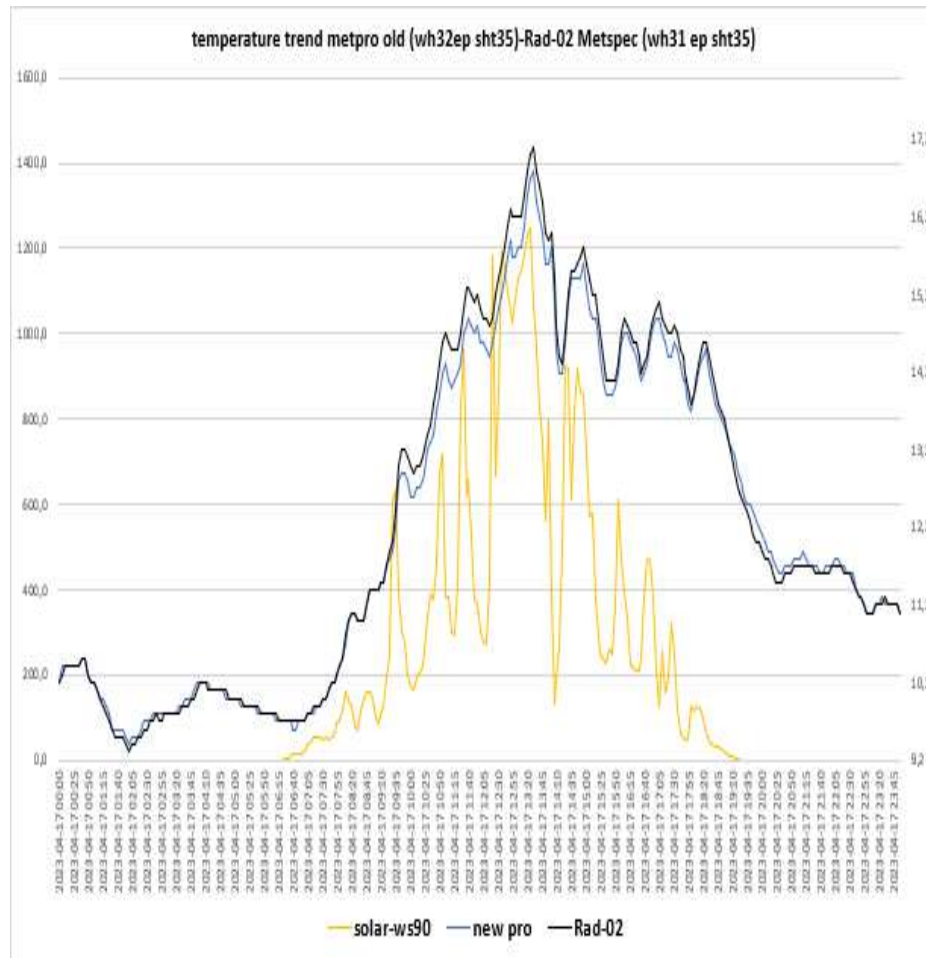
Metpro NEW (Probe sensor wh32 EP ecowitt)-DAVIS 7714 Black(Probe sensor wh31EP ecowitt)-



# NEW PRO BARANI (probe sensor wh31 EP ecowitt)- COMET 190 probe sensor wh32 EP



# METPRO OLD (probe sensor wh32EP ecowitt) -RAD-02 (probe sensor wh31 EP ecowitt)

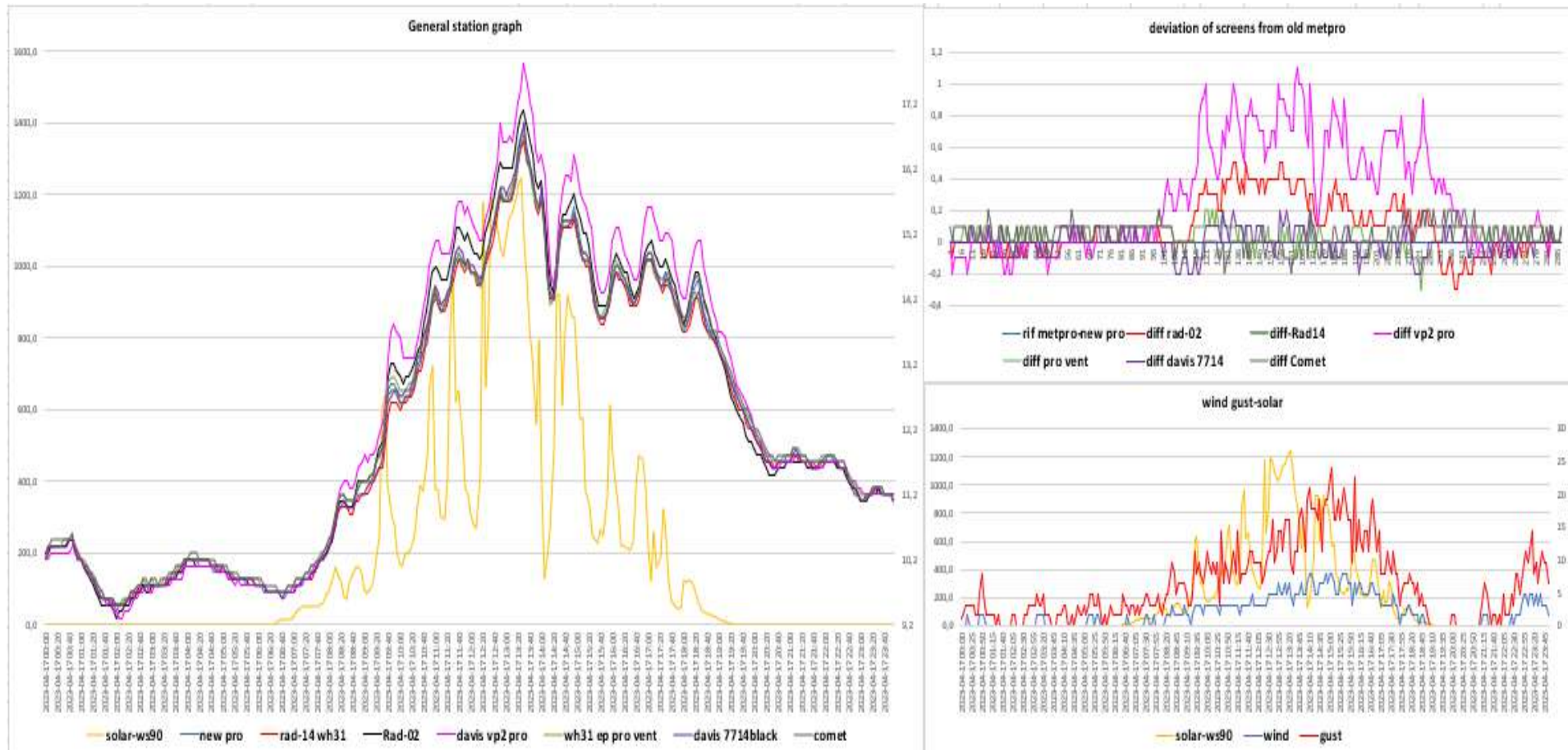


### STATISTICAL DATA (MAXIMUM MINIMUM AVERAGES)

[illegible]

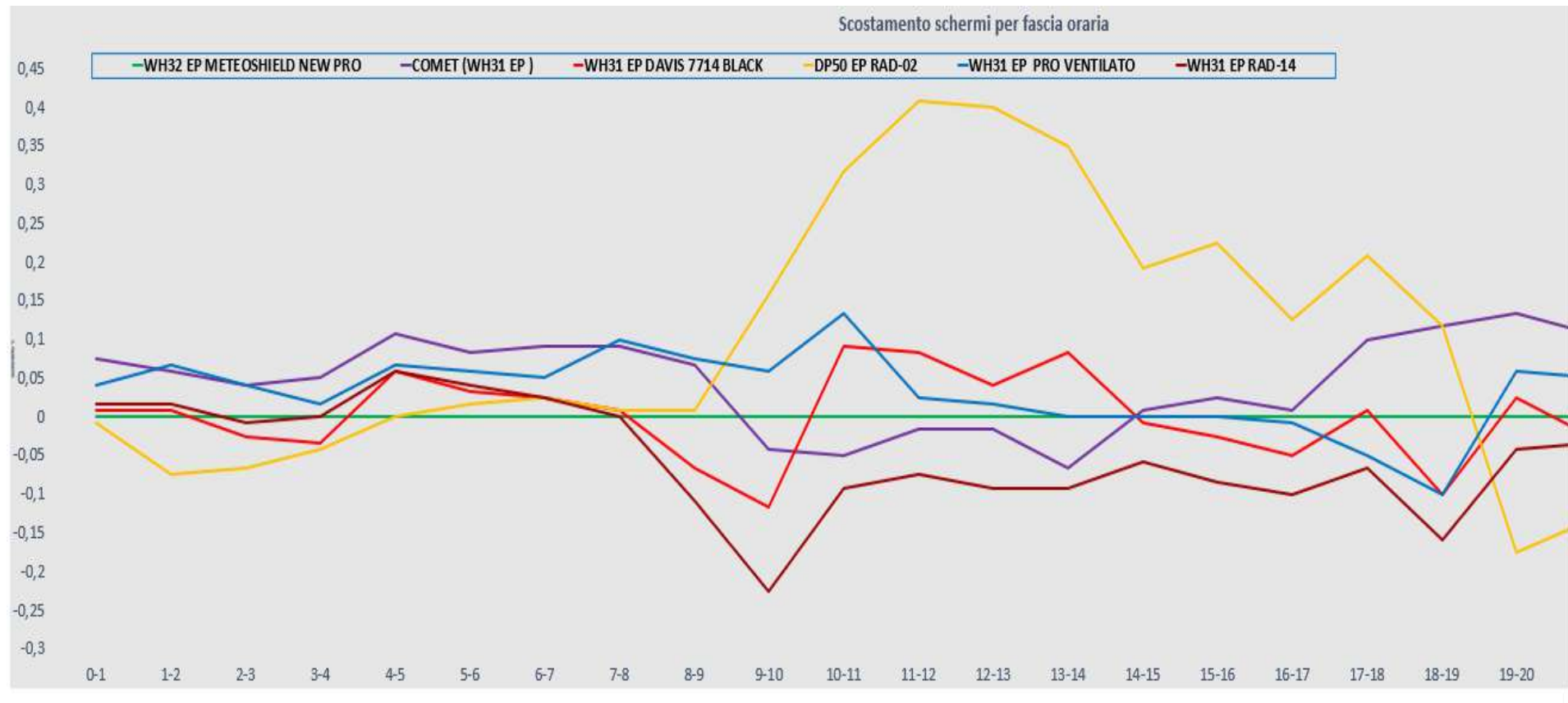


## general summary



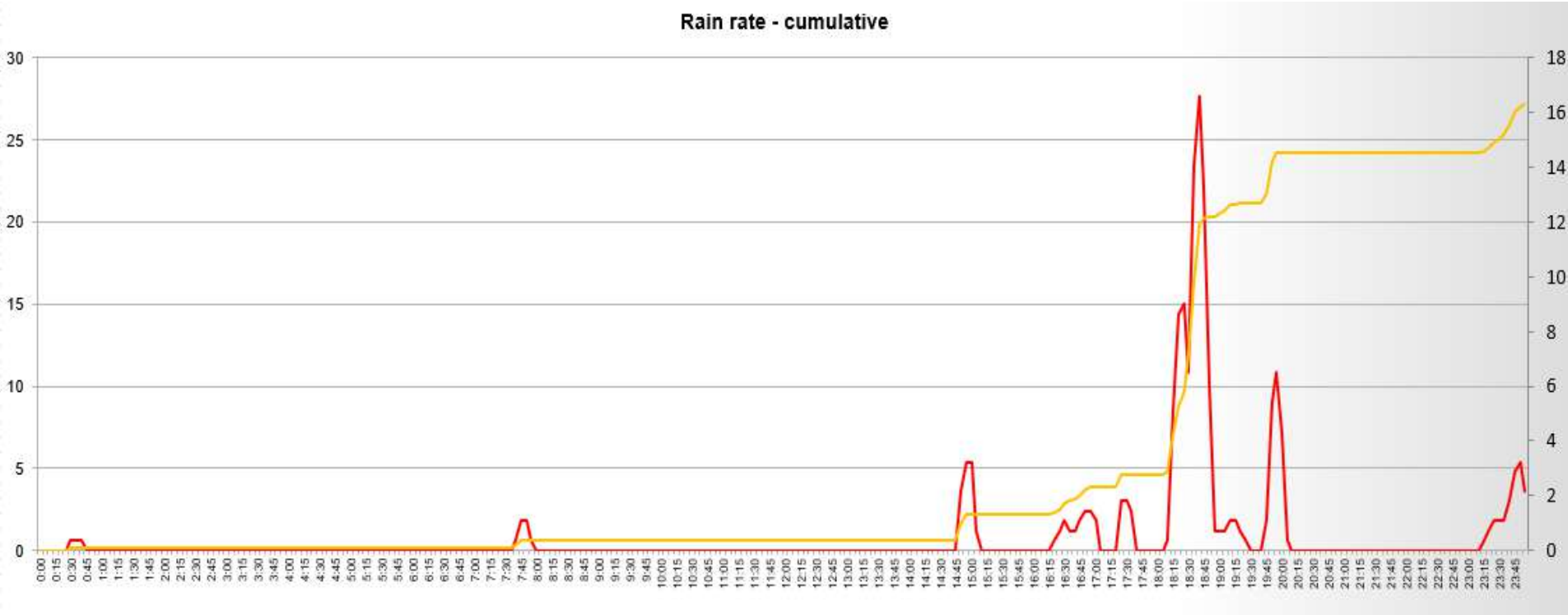


screen shift by time slot



RAIN 24h

Pluviometro ,manuale TFA	0.0 mm
Pluviometro vp2 pro	0,0 mm
Pluviometro wh40 ecowitt suolo	11,6mm
Meteorain Barani	0,0 mm
Pluviometro gw1001 ecowitt	0,0 mm



leaf wetness-leaf wetness-Pressure

