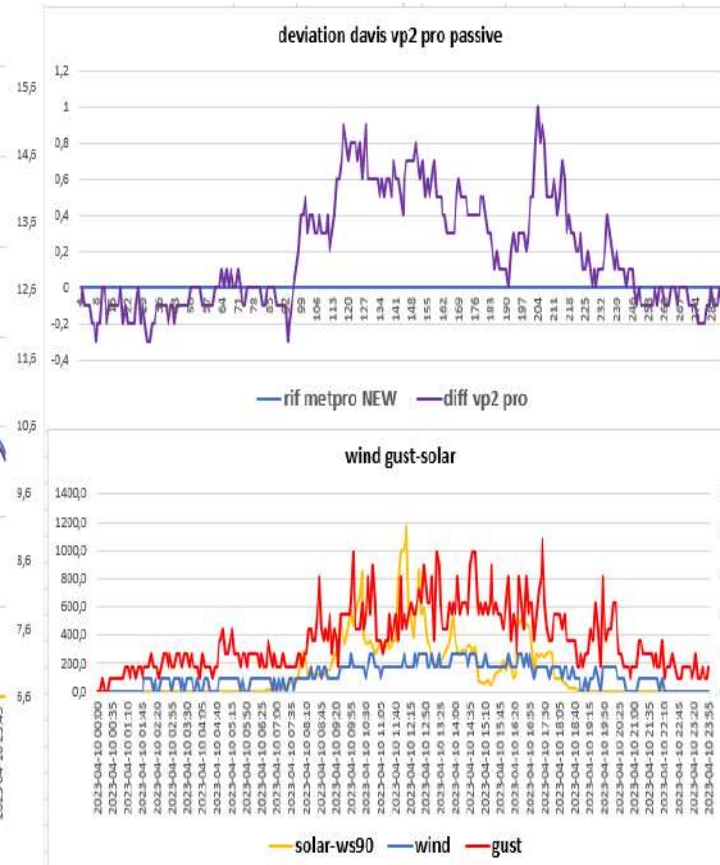
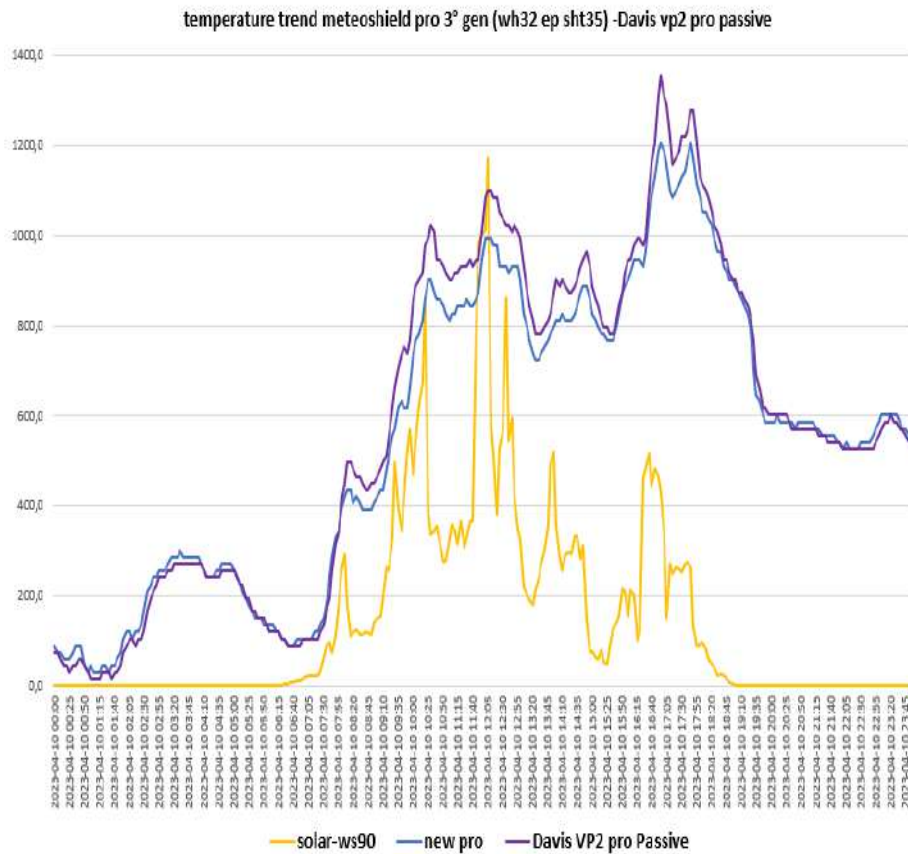
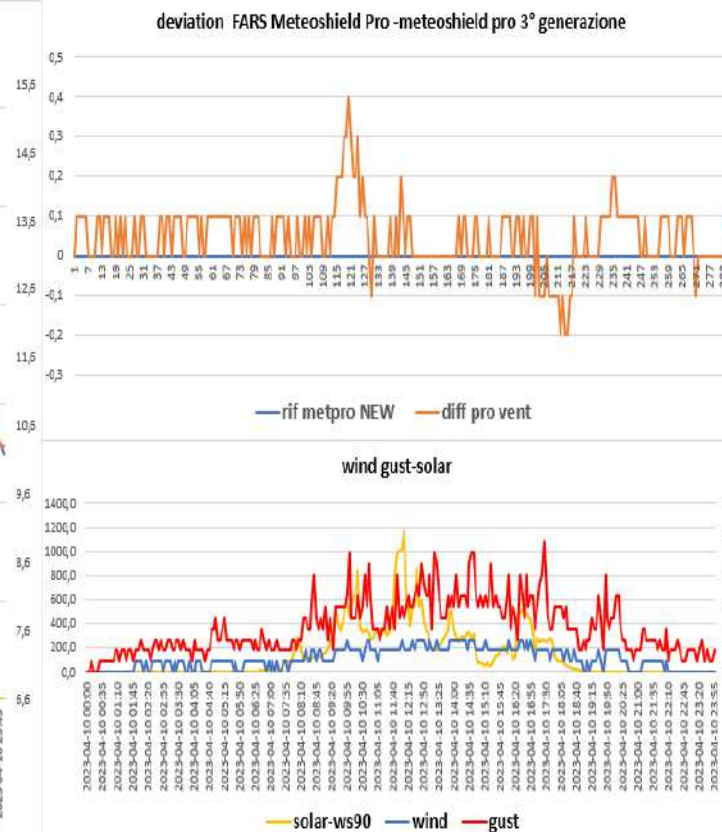
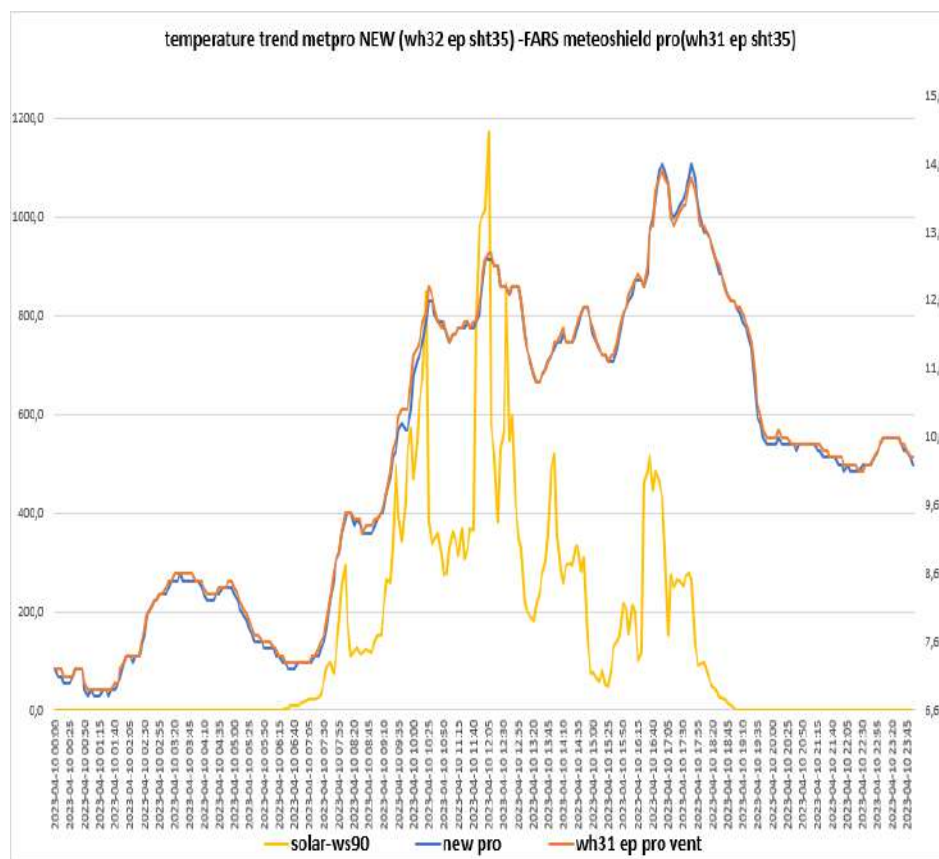


SCREEN TREND OF 10-04-2023

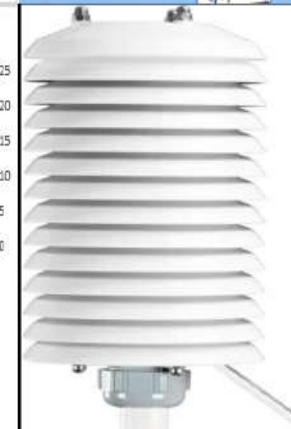
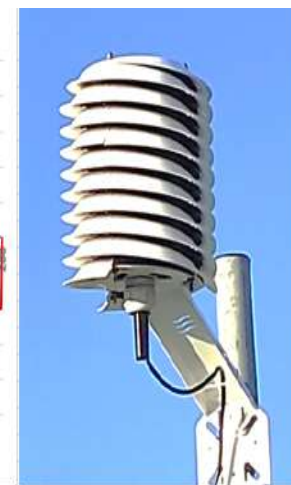
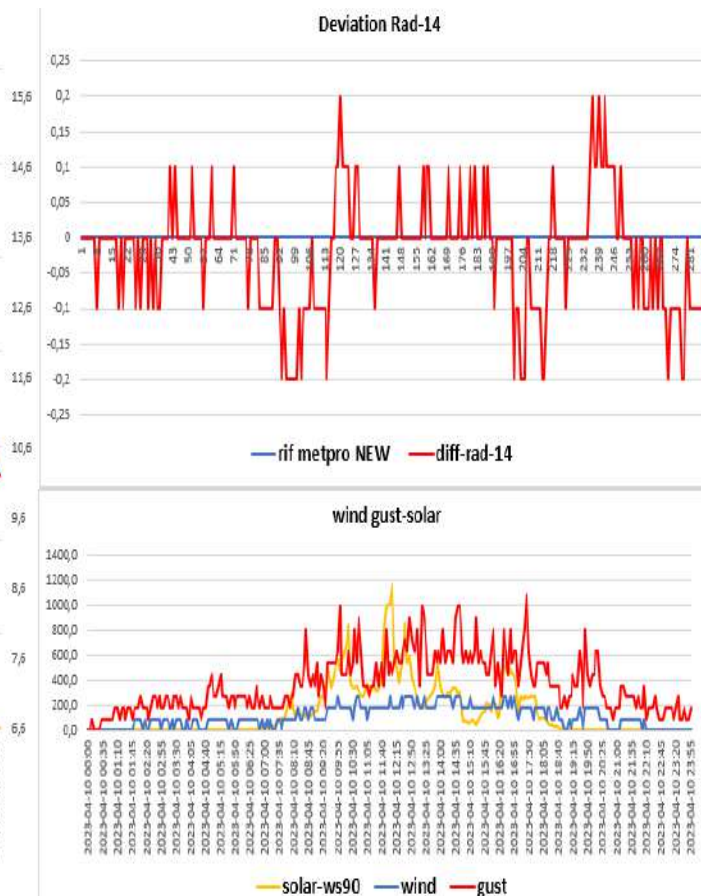
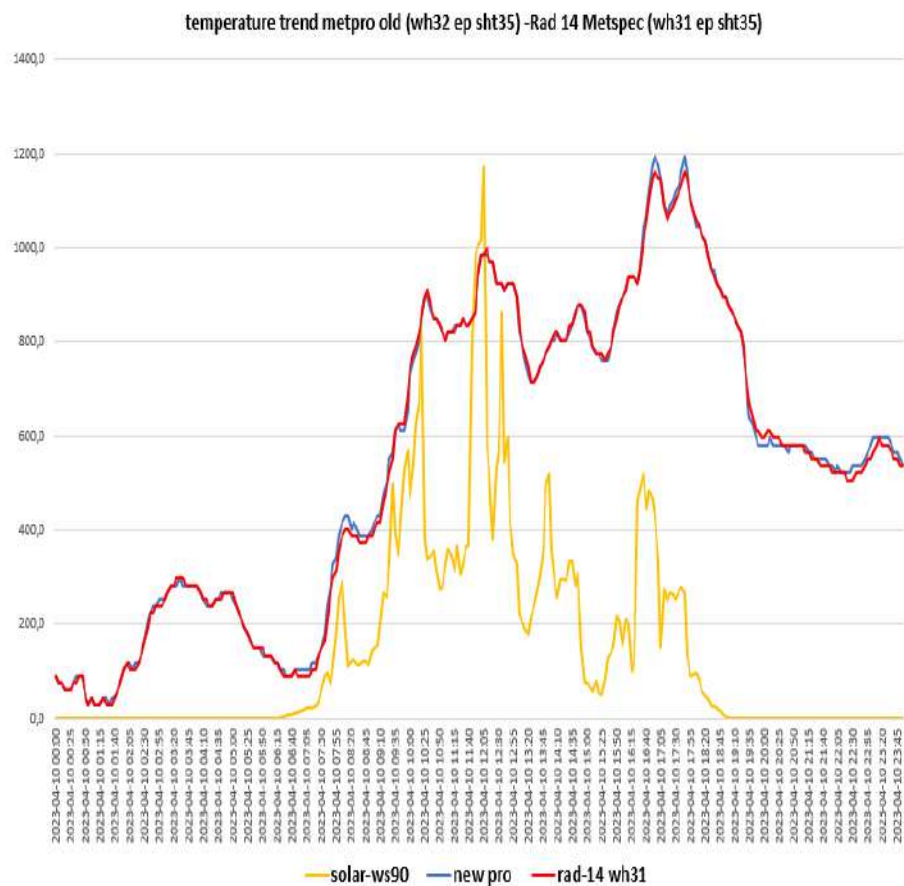
Davis vp2 pro- Metpro old (Probe sensor wh32EP ecowitt)



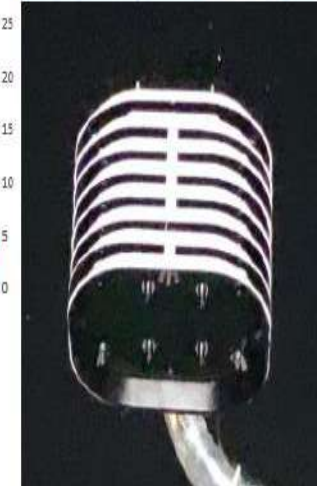
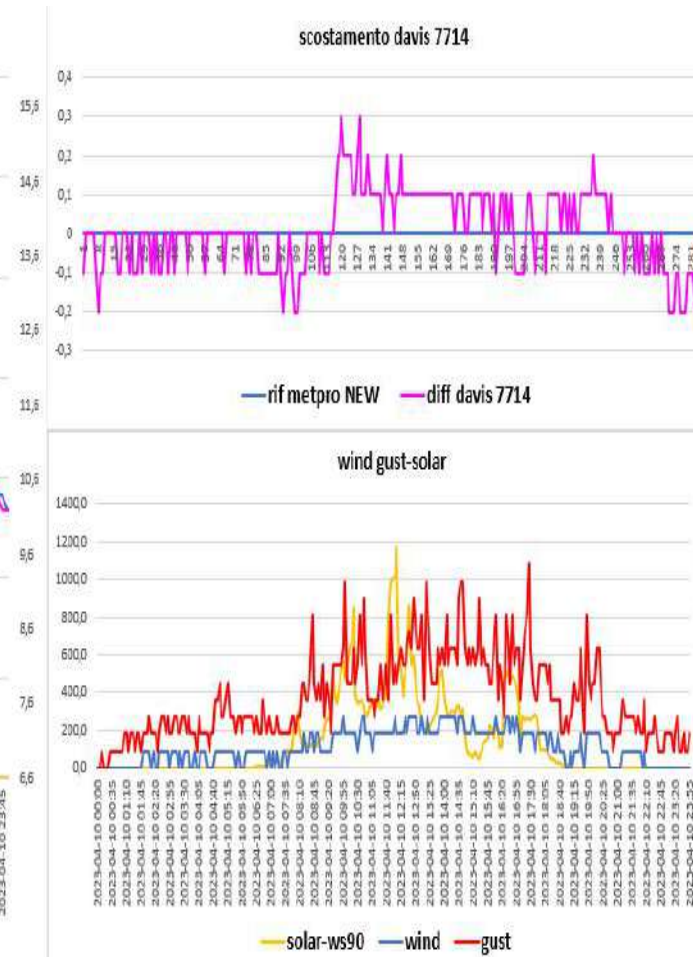
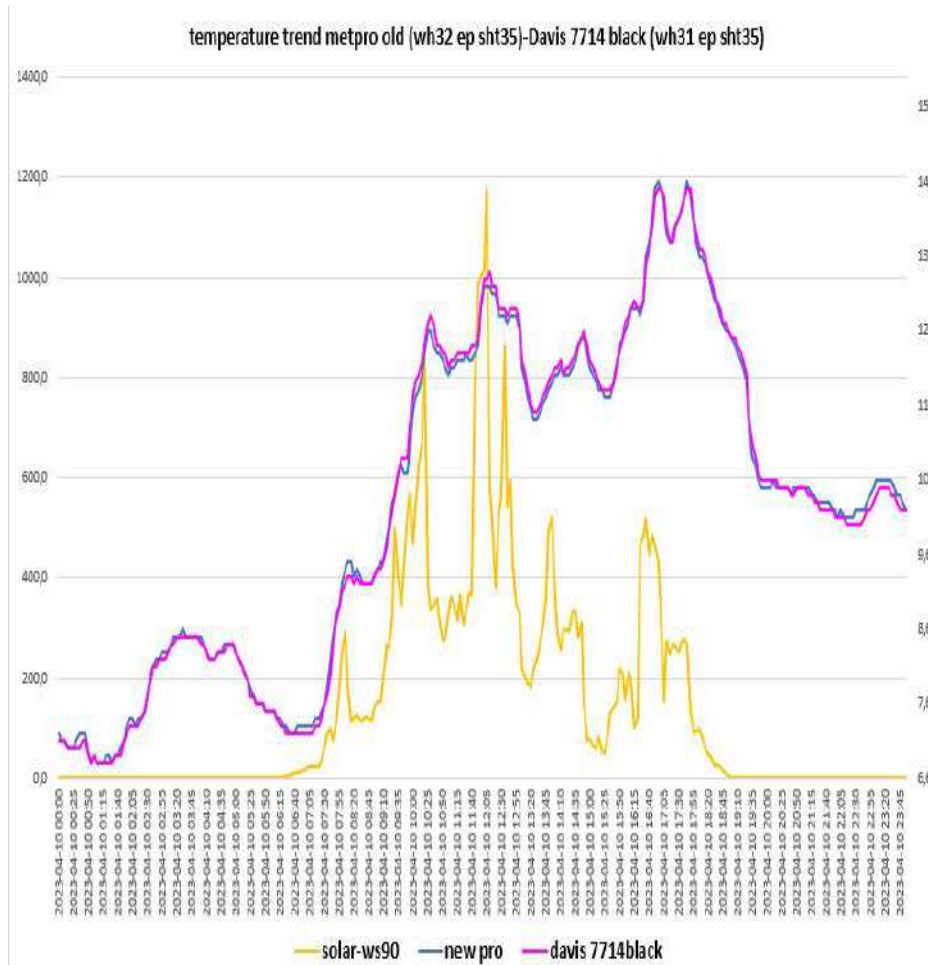
Metpro NEW (Probe sensor wh32EP ecowitt)- FARS meteoshield pro 3° gen (Probe sensor wh31EP ecowitt)



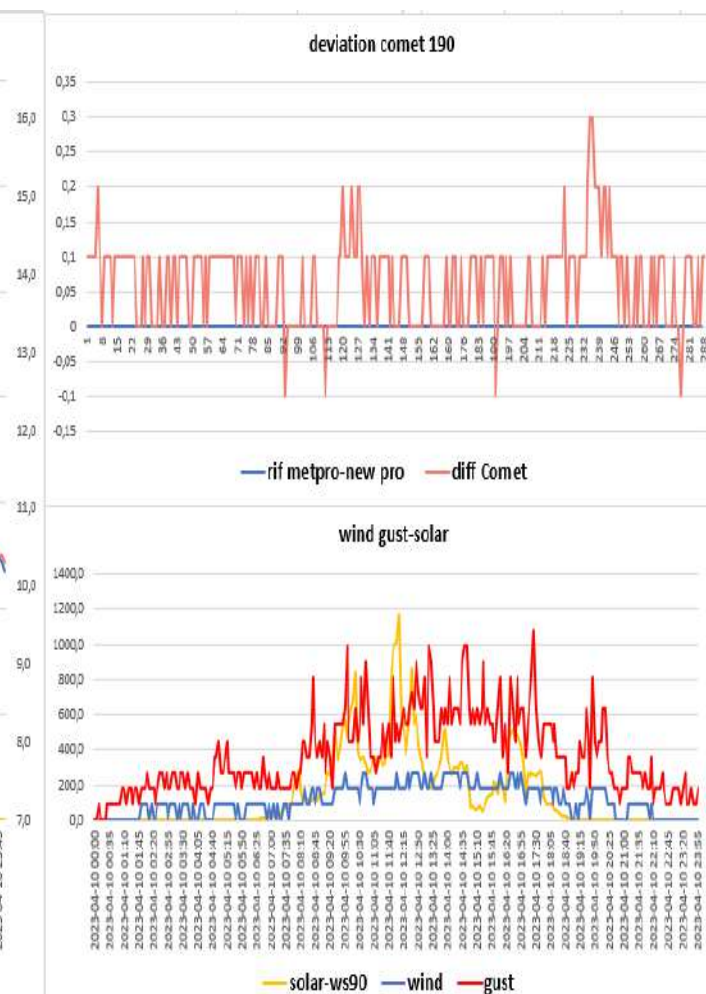
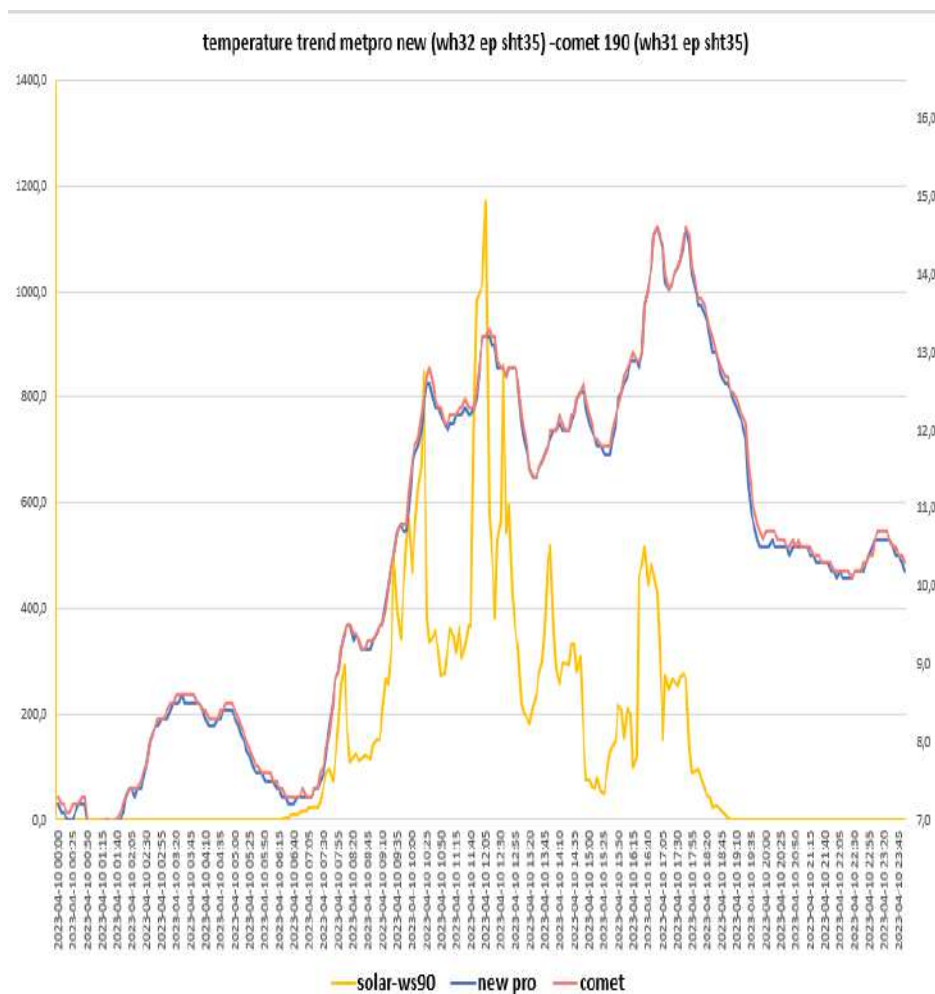
Metpro NEW (Probe sensor WH32 EP ecowitt) – Rad14 Metspec (Probe sensor wh31EP-WH31ep ecowitt)



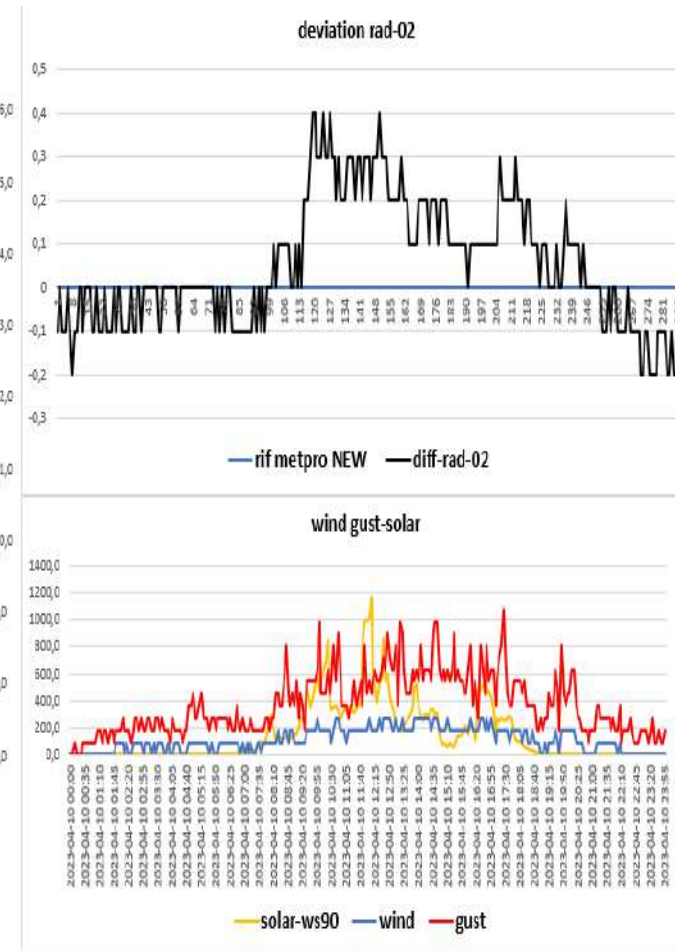
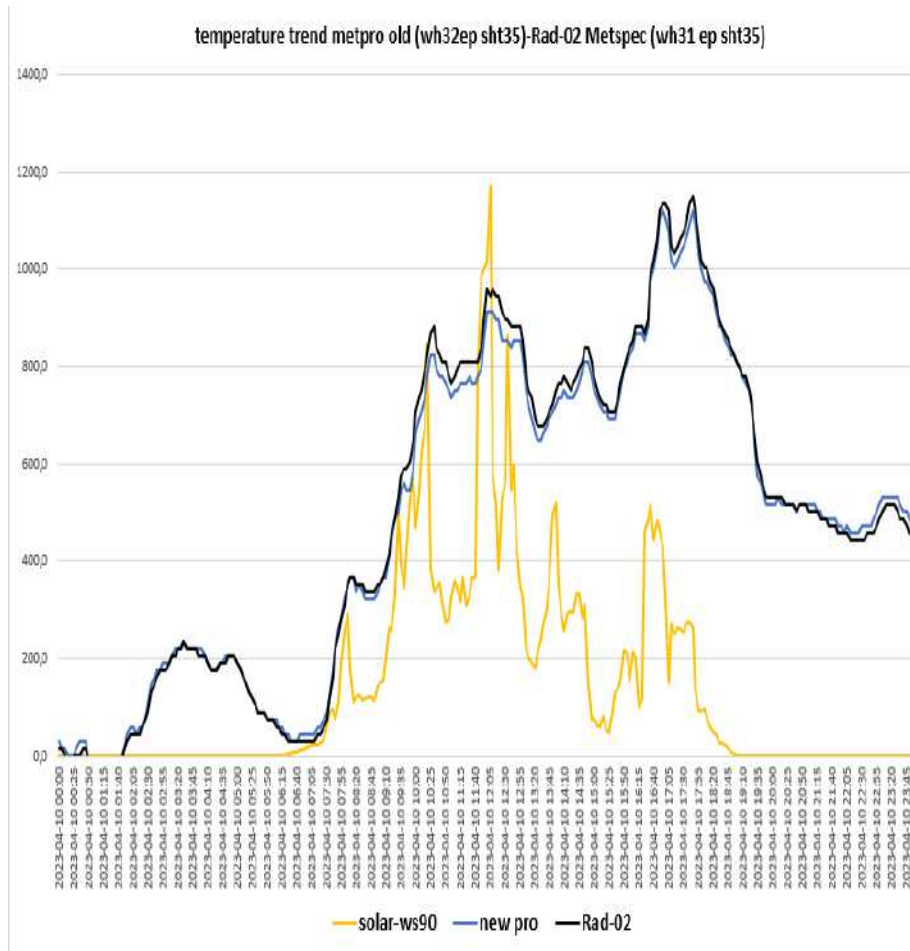
Metpro NEW (Probe sensor wh32 EP ecowitt)-DAVIS 7714 Black(Probe sensor wh31EP ecowitt)-



NEW PRO BARANI (probe sensor wh31 EP ecowitt)- COMET 190 probe sensor wh32 EP



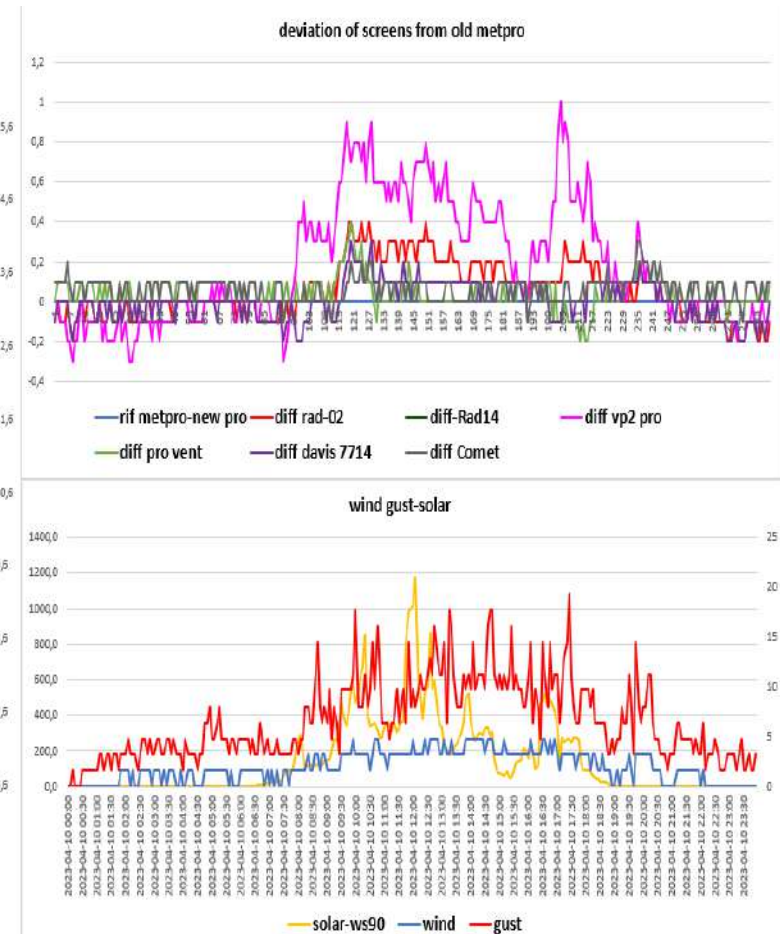
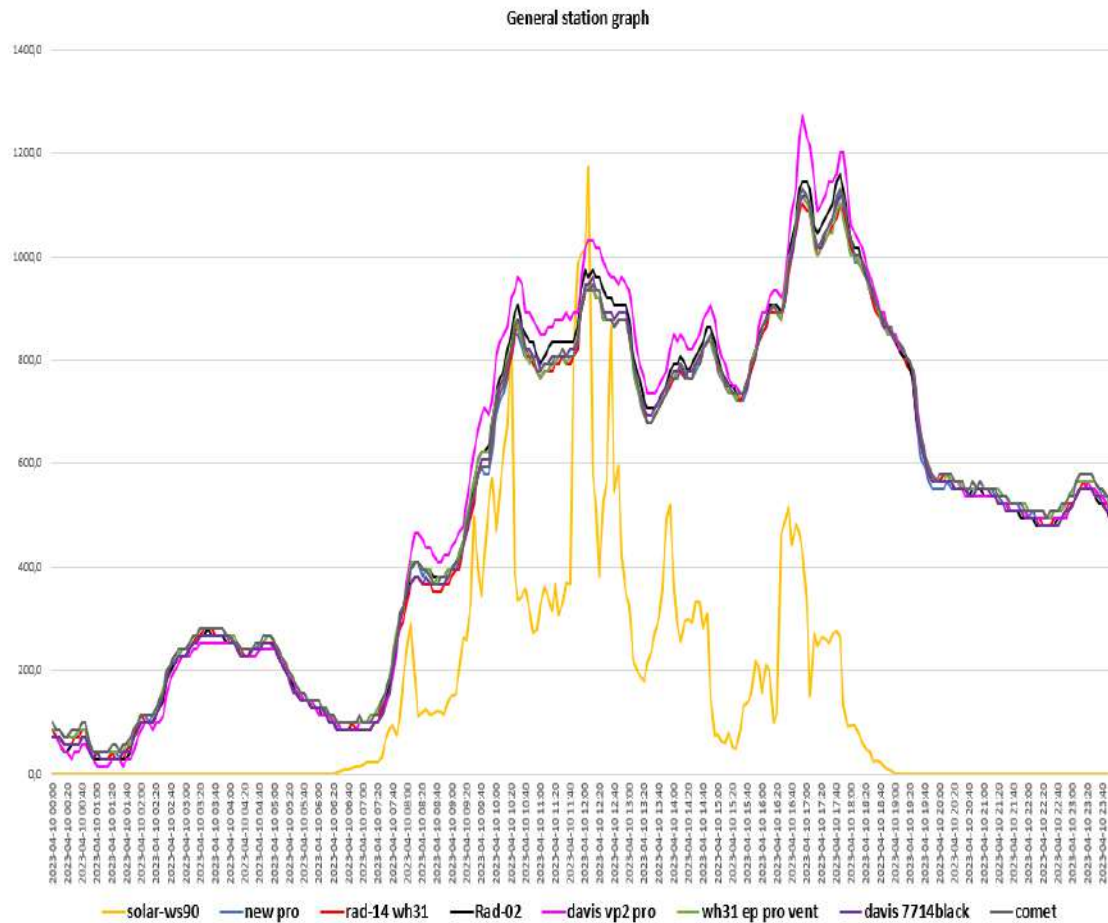
METPRO OLD (probe sensor wh32EP ecowitt) -RAD-02 (probe sensor wh31 EP ecowitt)



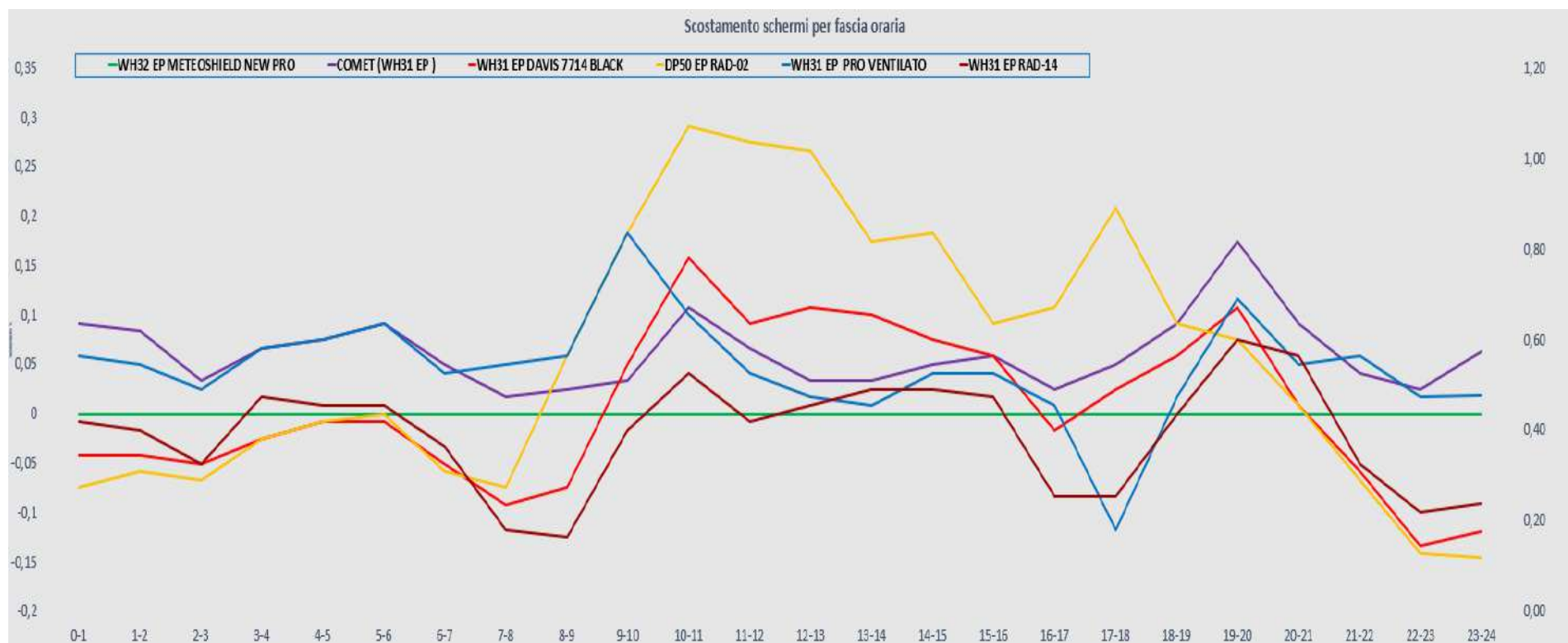
STATISTICAL DATA (MAXIMUM MINIMUM AVERAGES)

[illegible]

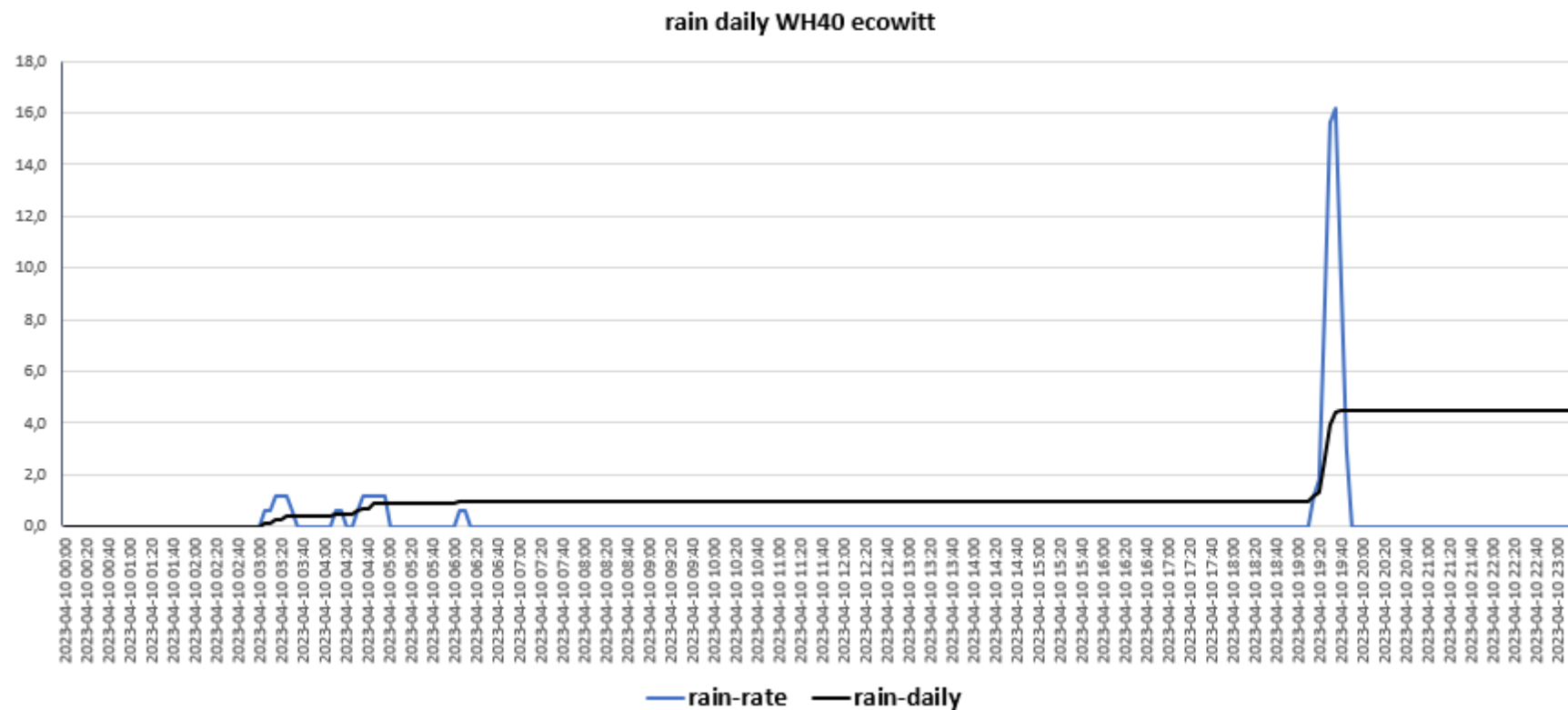
general summary



screen shift by time slot



RAIN 24h



| | |
|--------------------------------|--------|
| Pluviometro ,manuale TFA | 4,6 mm |
| Pluviometro vp2 pro | 4,6 mm |
| Pluviometro wh40 ecowitt suolo | 4,5 mm |
| Meteorain Barani | 0,0 mm |
| Pluviometro gw1001 ecowitt | 4,1 mm |

