

SCREEN TREND OF 05-04-2023

## DETECTION POST

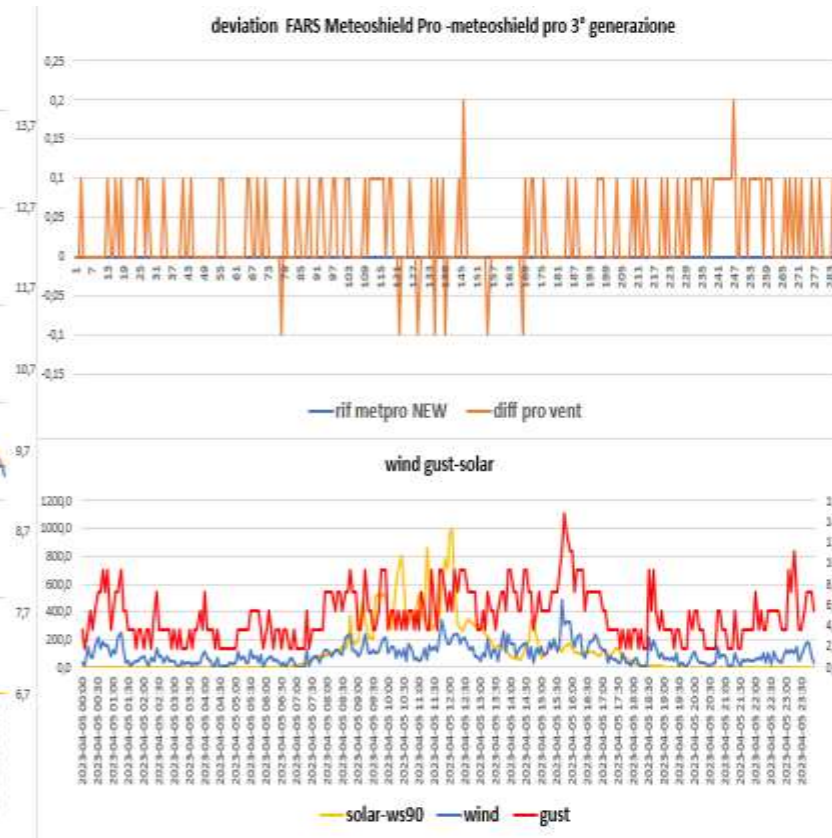
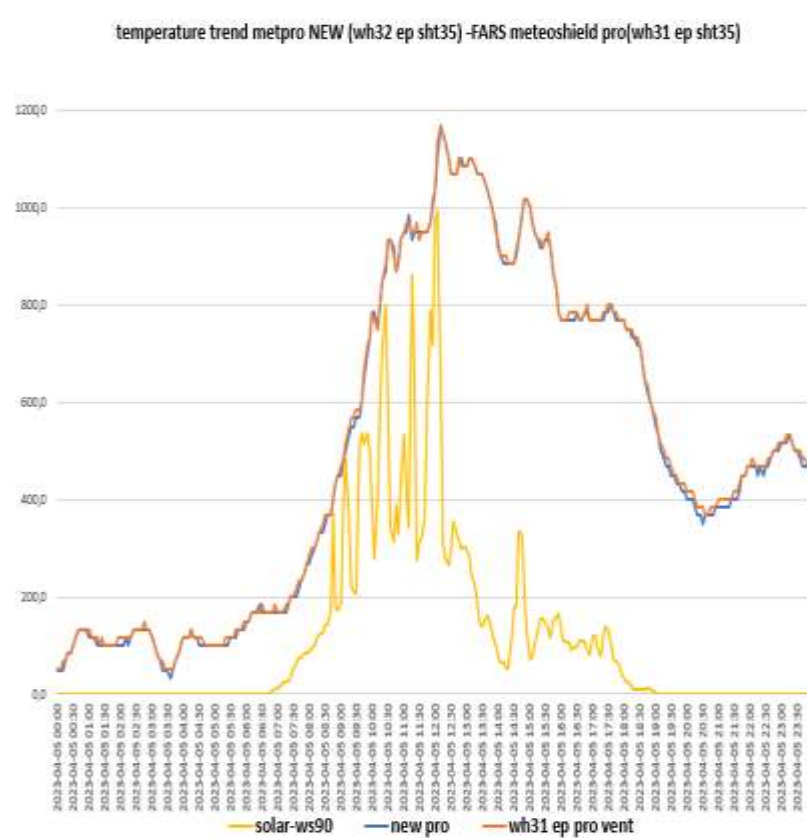


**Davis vp2 pro- Metpro old (Probe sensor wh32EP ecowitt)**

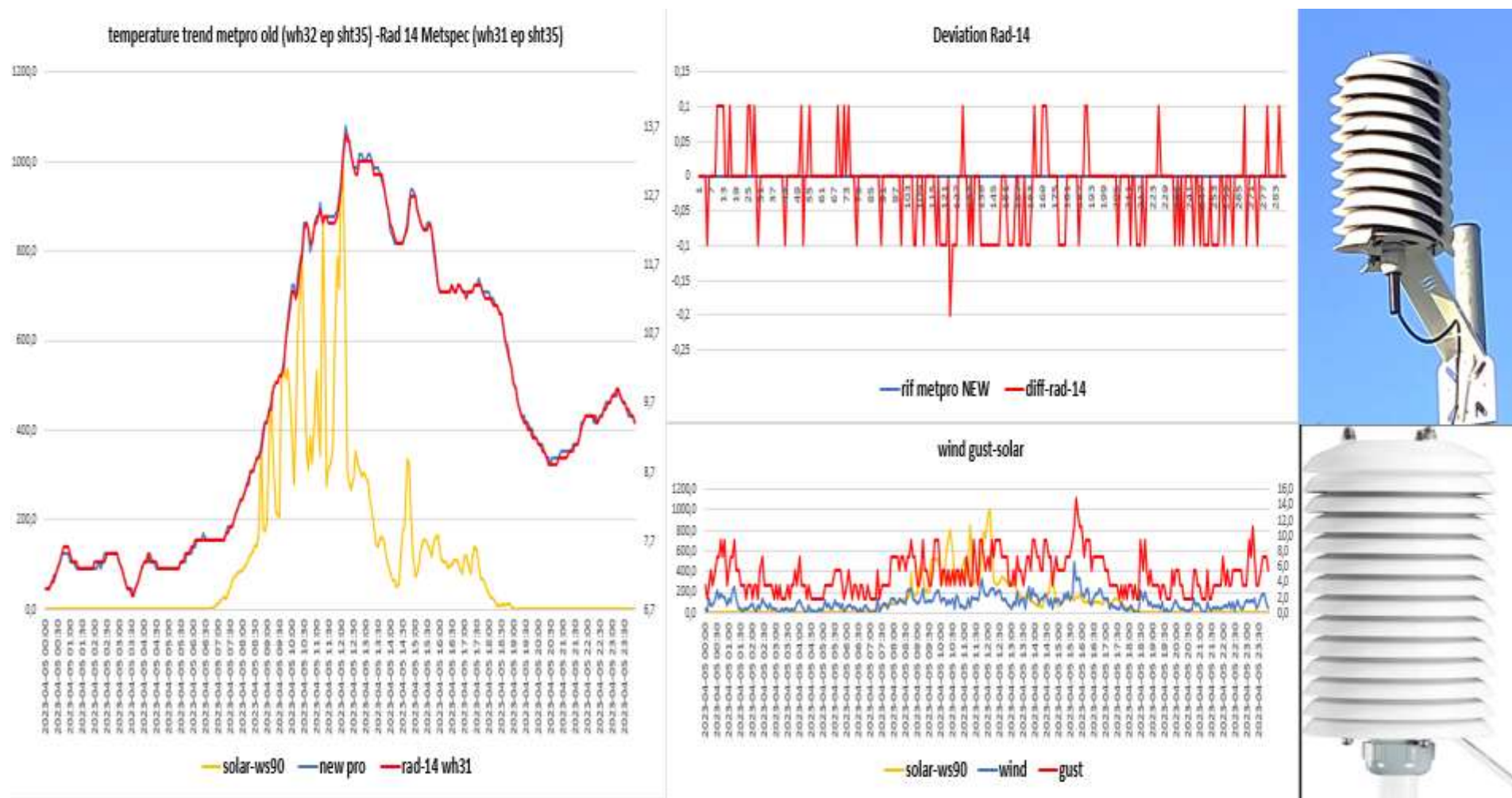
**NO DATE**

.

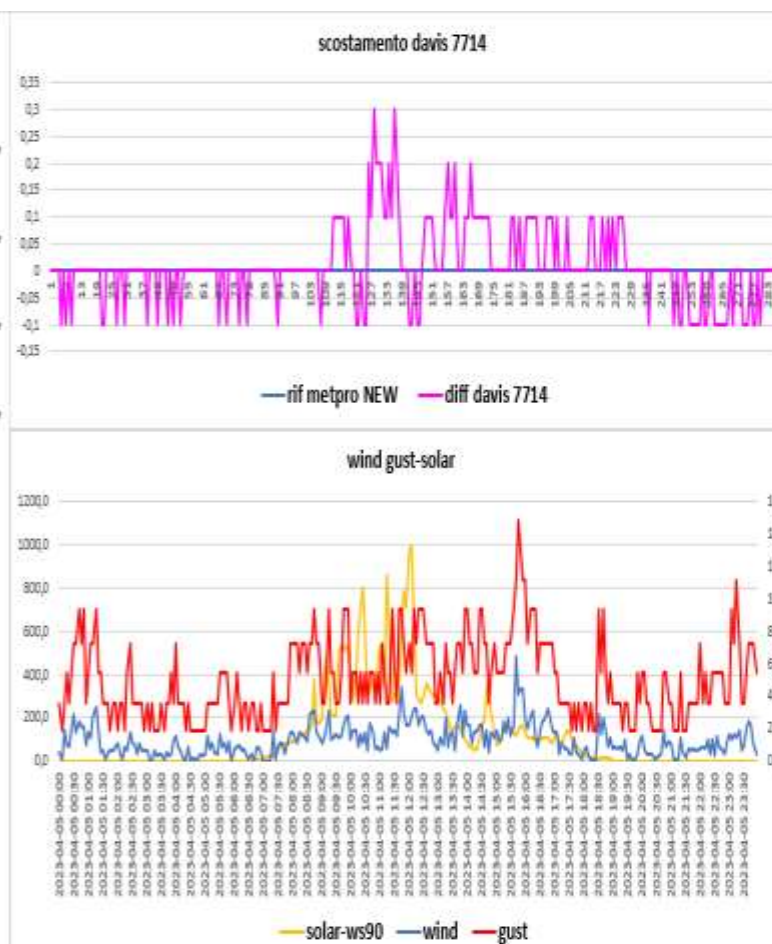
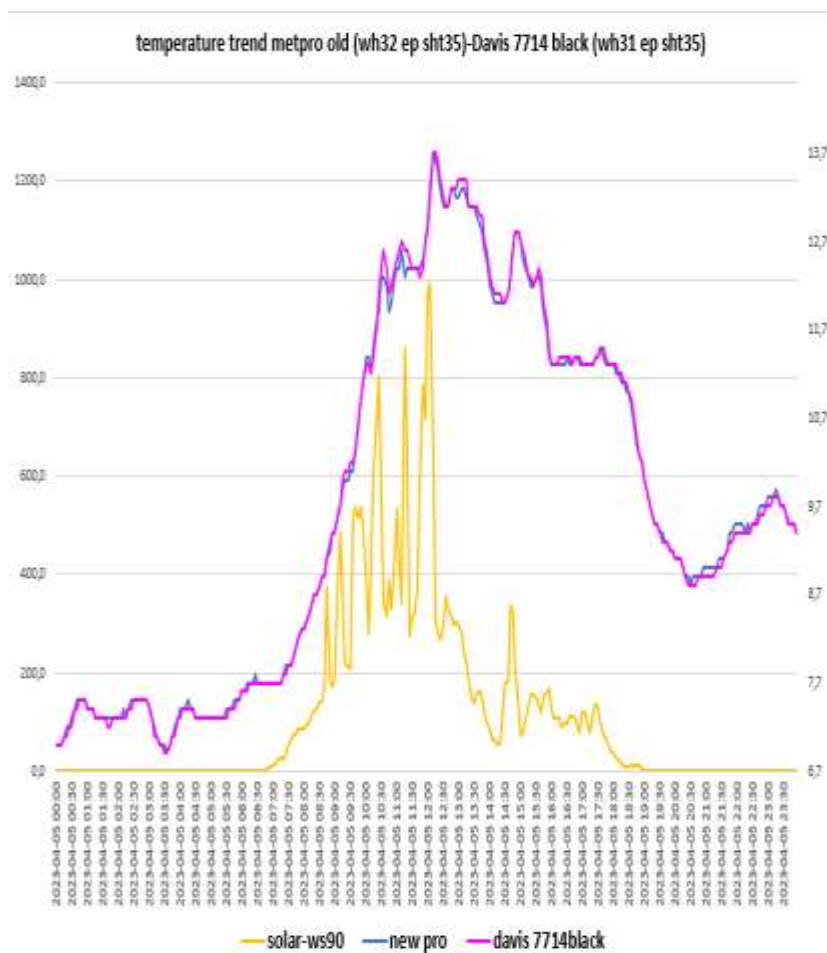
# Meteoshield pro 3° gen (Probe sensor wh32EP ecowitt)- FARS meteoshield pro 3° gen(Probe sensor wh31EP ecowitt)



# Meteoshield pro 3° gen (Probe sensor WH32 EP ecowitt) – Rad14 Metspec (Probe sensor wh31EP-WH31ep ecowitt)

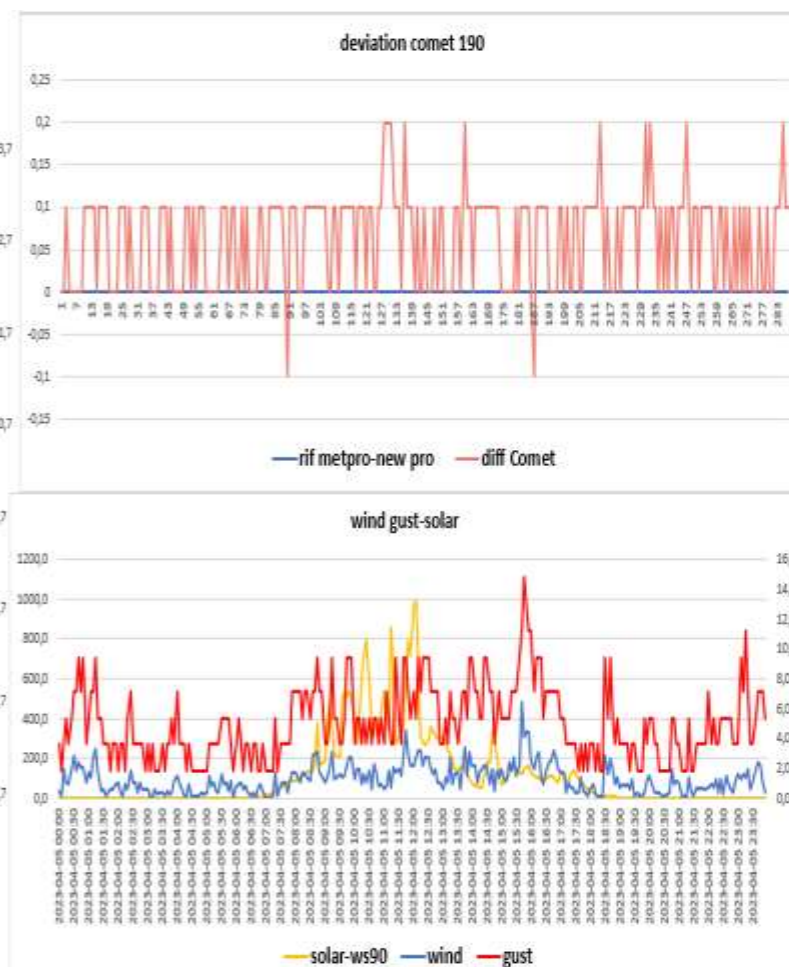
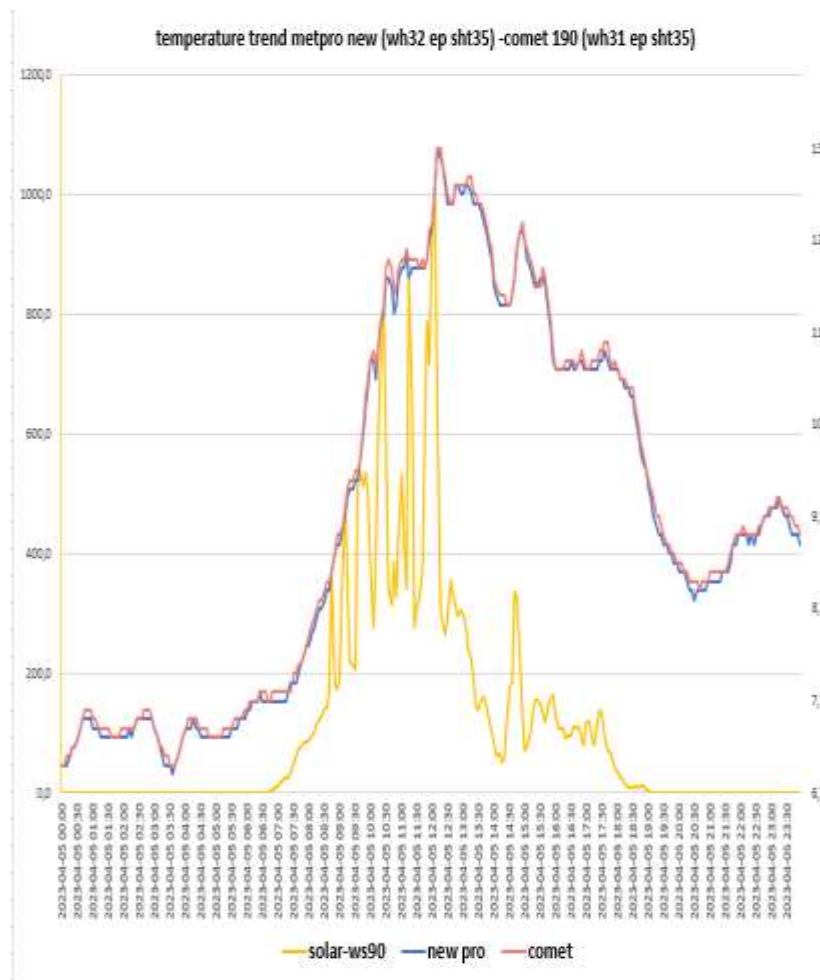


Meteoshield pro 3° gen (Probe sensor wh32 EP ecowitt)-DAVIS 7714 Black(Probe sensor wh31EP ecowitt)-

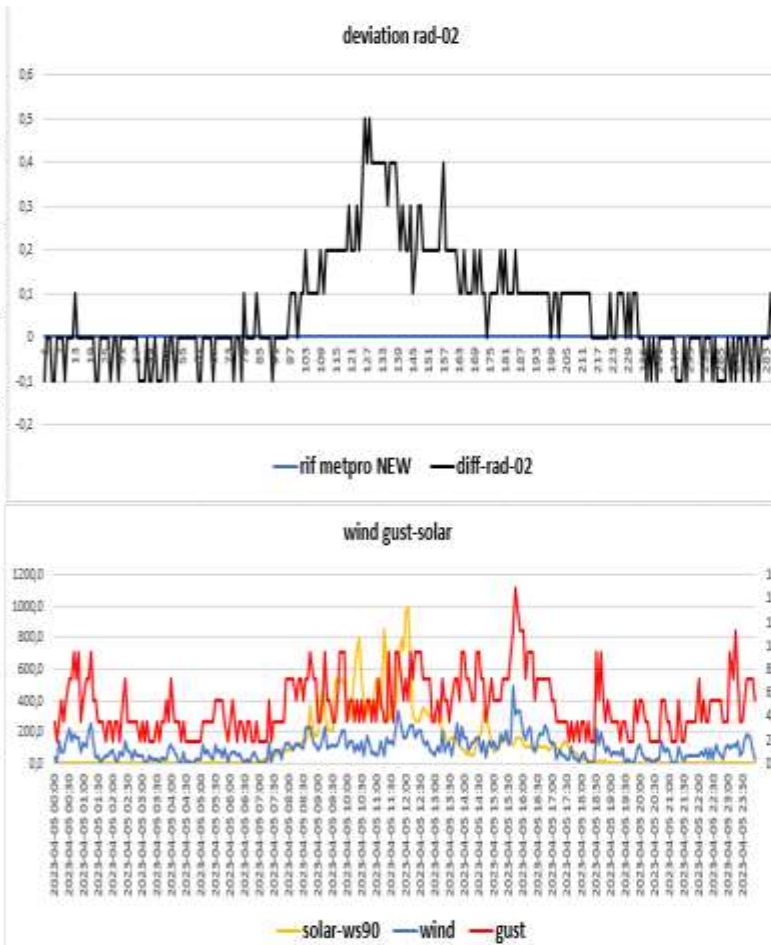
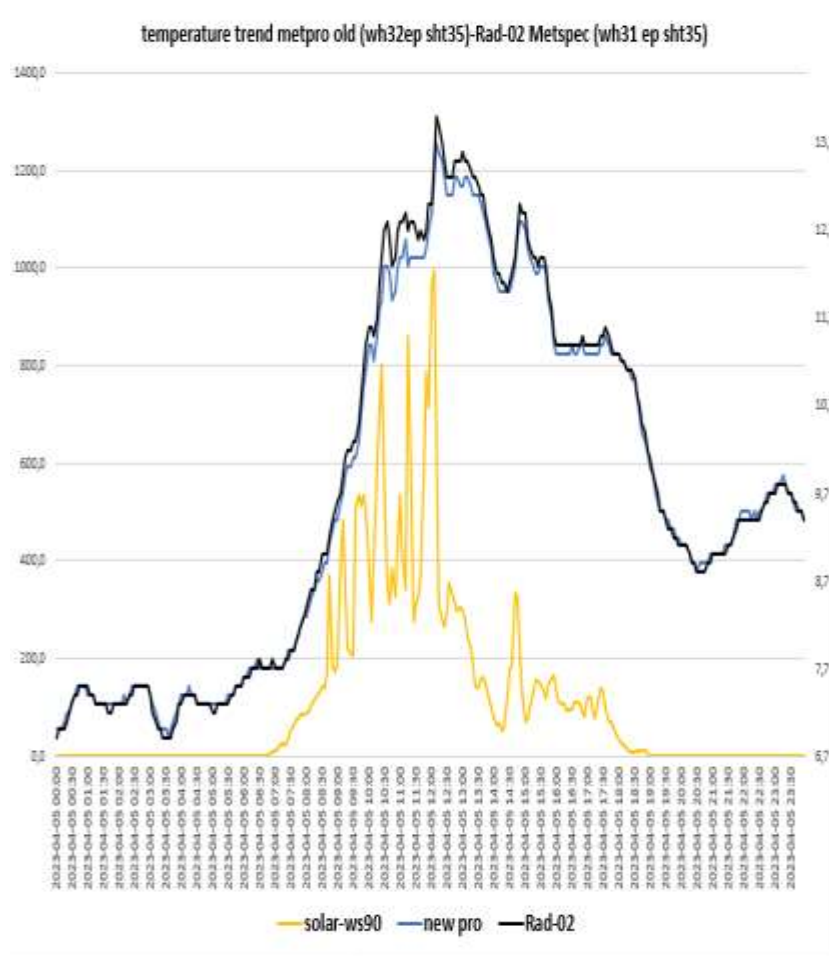




# Meteoshield pro 3° gen (probe sensor wh32 EP ecowitt)- COMET 190 probe sensor wh32 EP



# METPRO OLD (probe sensor wh32EP ecowitt) -RAD-02 (probe sensor wh31 EP ecowitt)

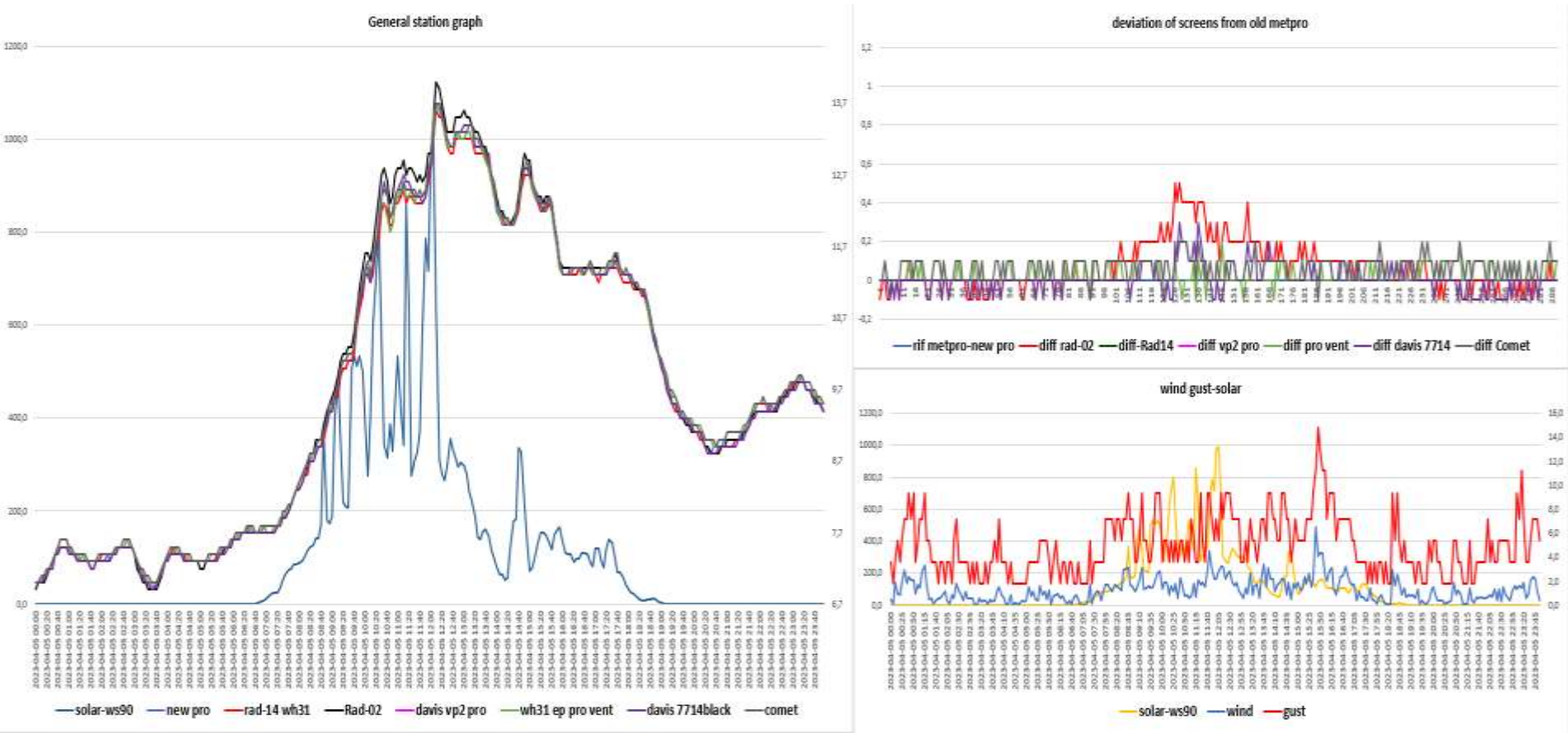


### STATISTICAL DATA (MAXIMUM MINIMUM AVERAGES)

		dalle ore 09:00 alle 17:00																			
vento medio 24h	1,26979 km/h	vento medio ore di sole	1,996	dalle ore 11: alle 18				scostamento dalle 11 alle 18													
media met pro New	9,73993			media met pro old	12,2482																
max met pro New	13,7	schermo di riferimento		max met pro old	13,7																
min met pro New	6,9			min met pro old	11,3																
media davis vp2 pro	#DIV/0!	scost medio davis vp2 pro	#####	media davis vp2 pro	#DIV/0!	scost medio davis vp2 pro	#####	media davis7714black	12,2988	scost medio davis 7714 black	0,050588										
max davis vp2pro	0	scost max davis vp2 pro	0	max davis vp2 pro	0	scost max davis vp2 pro	0	max davis7714 black	13,7	scost max davis 7714 black	0,3										
min davis vp2 pro	0	scost min davis vp2 pro	0	min davis vp2 pro	0	scost min davis vp2 pro	0	min davis 7714 black	11,3	scost min davis 7714 black	-0,1										
media rad-14	9,72465	scost medio rad-14	-0,02	media Rad-14	12,2188	scost medio rad-14	-0,029	media new pro	12,3106	scost medio new pro	0,062353										
max rad-14	13,6	scost max rad-14	0,1	max rad-14	13,6	scost max rad-14	0,1	max new pro	13,7	scost max new pro	0,2										
min rad-14	6,9	scost min rad-14	-0,2	min Rad-14	11,2	scost min rad-14	-0,1	min new pro	11,3	scost min new pro	-0,1										
media rad-02	9,73993	scost medio Rad-02	0,063	media Rad-02	12,4047	scost medio rad-02	0,1565	media pro ventilato	12,2659	scost medio pro vent	0,017647										
max rad-02	13,7	scost max Rad-02	0,5	max Rad-02	14	scost max rad-02	0,4	max pro ventilato	13,7	scost max pro vent	0,2										
min rad-02	6,9	scost min Rad-02	-0,1	min Rad-14	11,3	scost min rad-02	0	min pro ventilato	11,3	scost min pro vent	-0,1										
media pro ventilato	9,77049	scost medio pro vent	0,031	media comet	9,8024306	scost medio Comet	0,0625														
max pro ventilato	13,7	scost max pro vent	0,2	max comet	13,7	scost max Comet	0,2														
min pro ventilato	7	scost min pro vent	-0,1	min comet	7	scost min Comet	-0,1														
media davis 7714	9,74757	scost medio davis 7714	0,008																		
max davis 7714	13,7	scost max davis 7714	0,3																		
min davis 7714	6,9	scost min davis 7714	-0,1																		



# general summary



RAIN 24h

rain daily WH40 ecowitt

