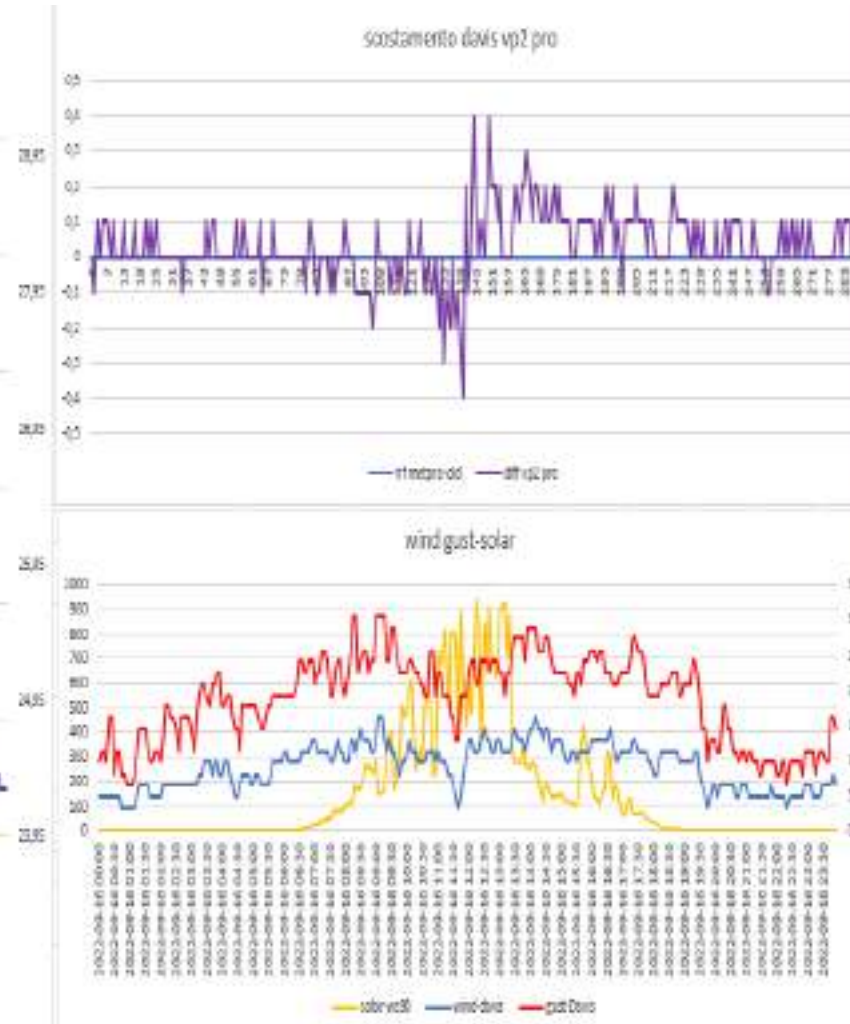
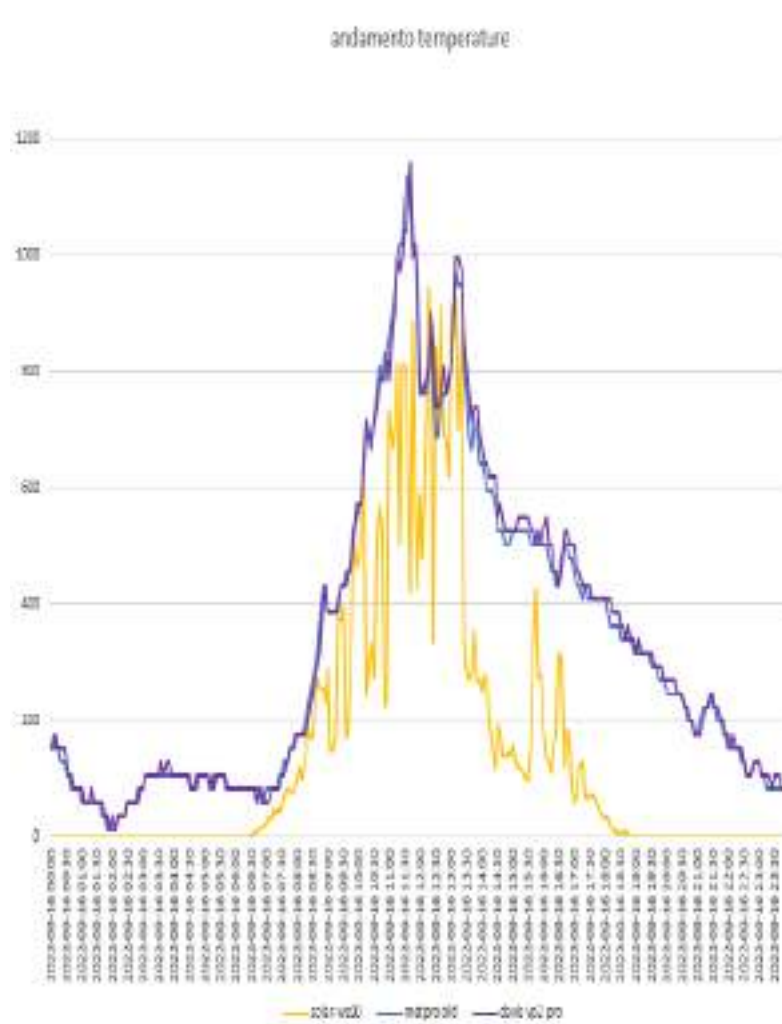
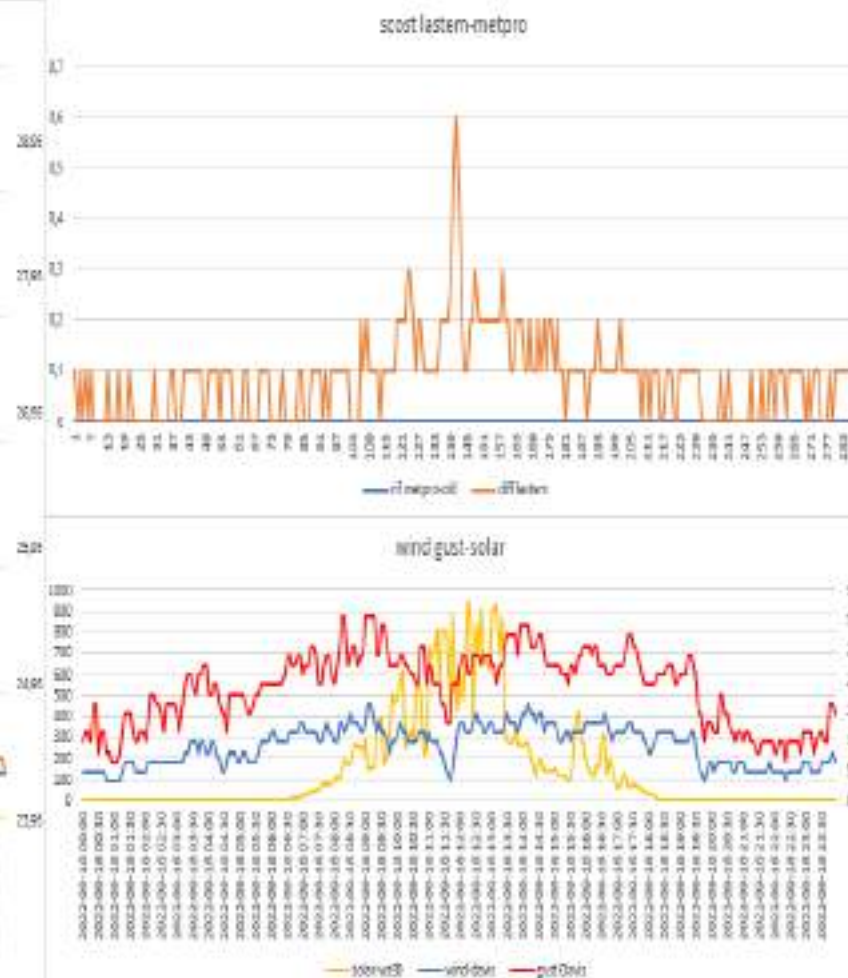
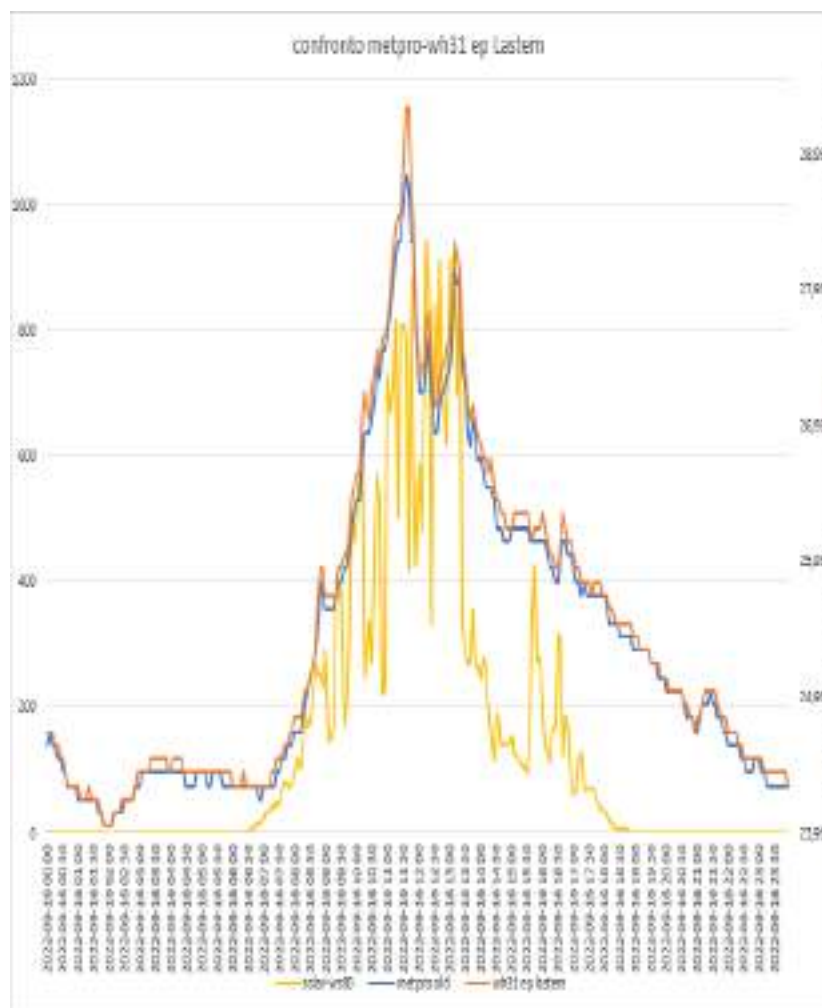


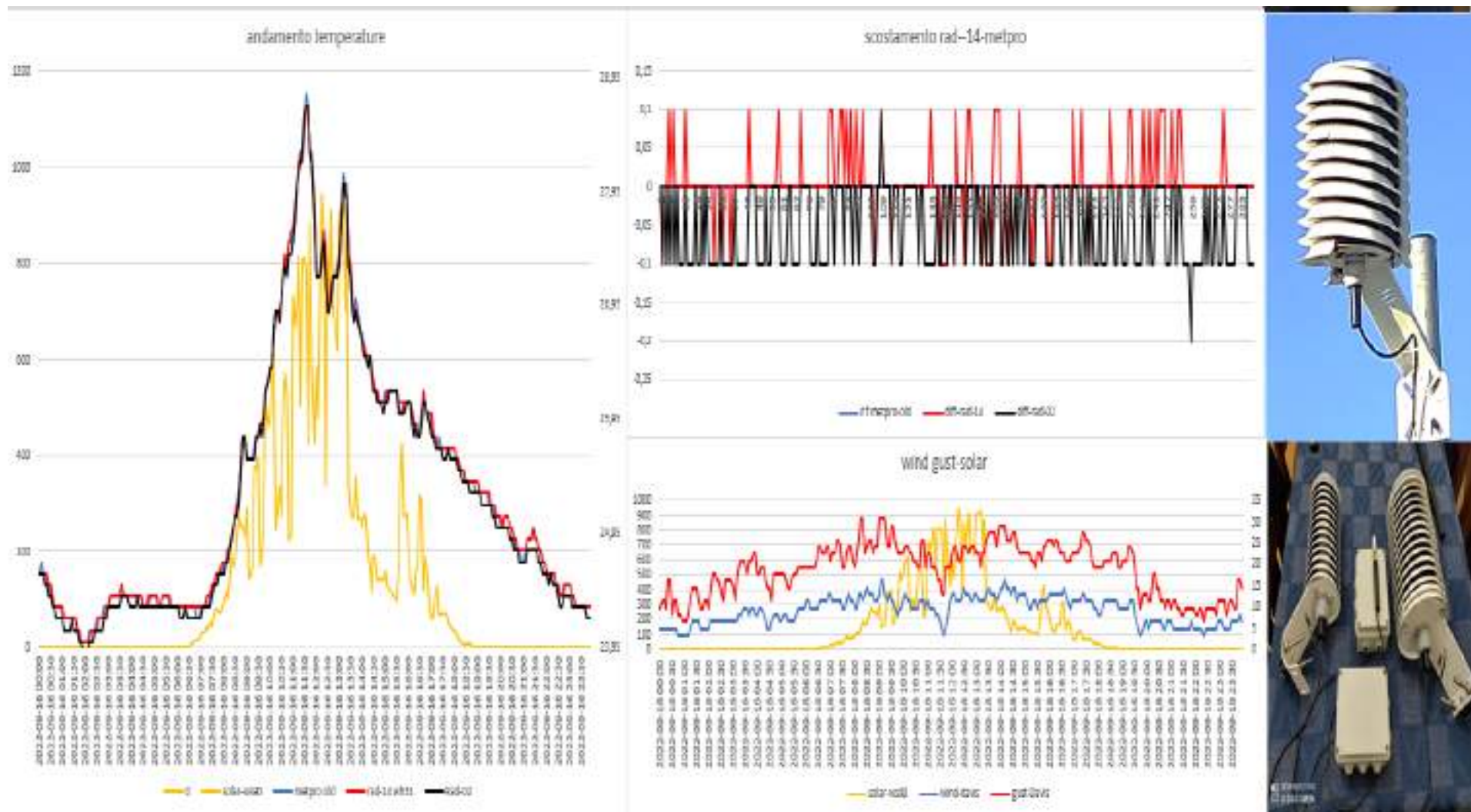
# SCREEN TREND OF 16-09-2022 Davis vp2 pro- Rad-02 (Probe sensor wh31EP ecowitt)



Rad-02 Metspec (Probe sensor wh31EP ecowitt)- Lsi IASTEM(Probe sensor wh31EP ecowitt)

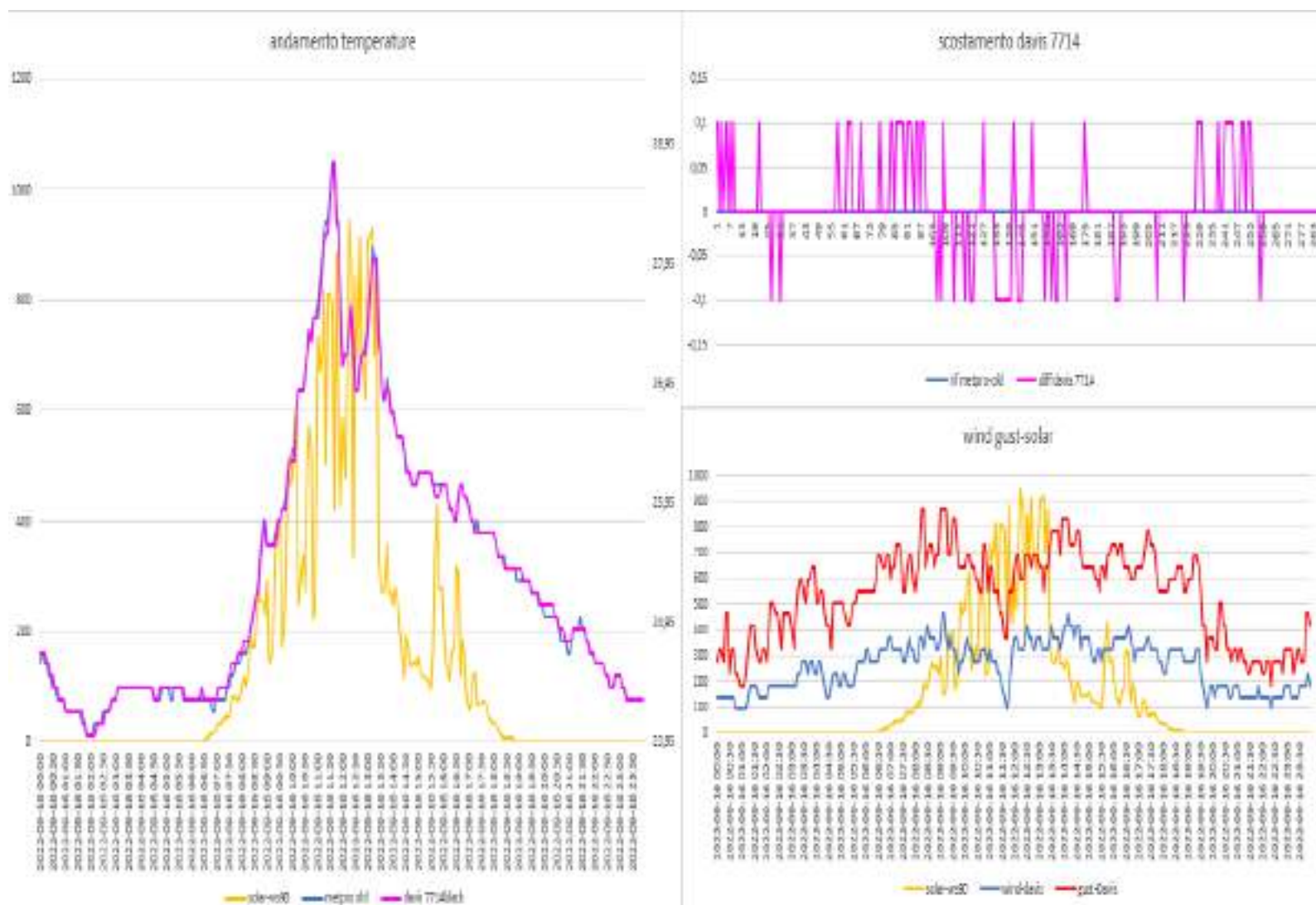


RAD-02 Metspec (Probe sensor WH31EP ecowitt) – METEOSHIELD PRO-Rad14 Metspec (Probe sensor wh32EP-WH31ep ecowitt)

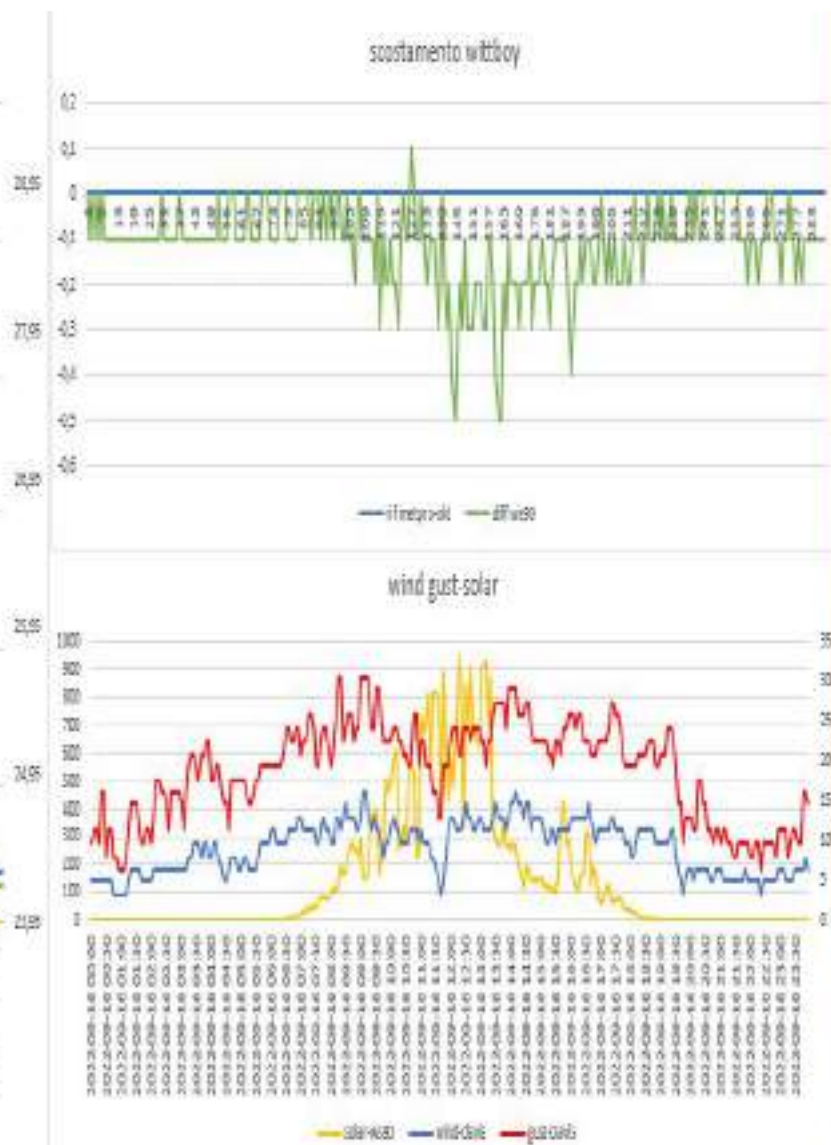
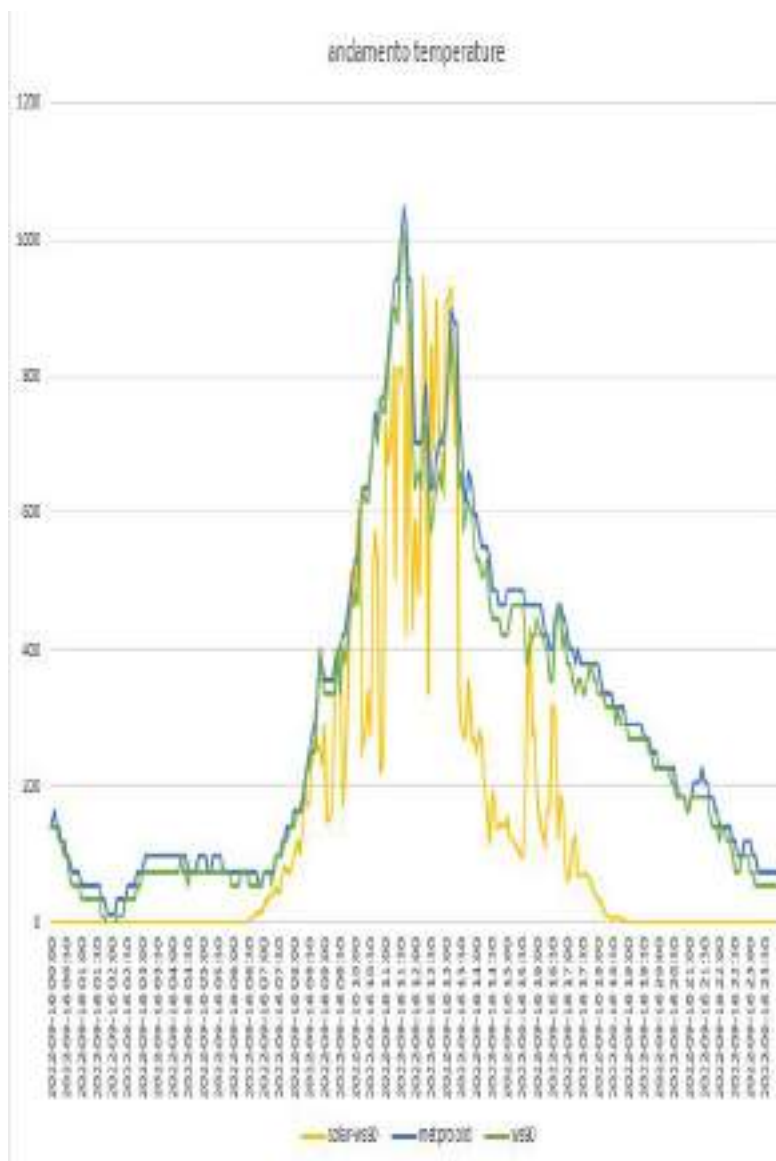




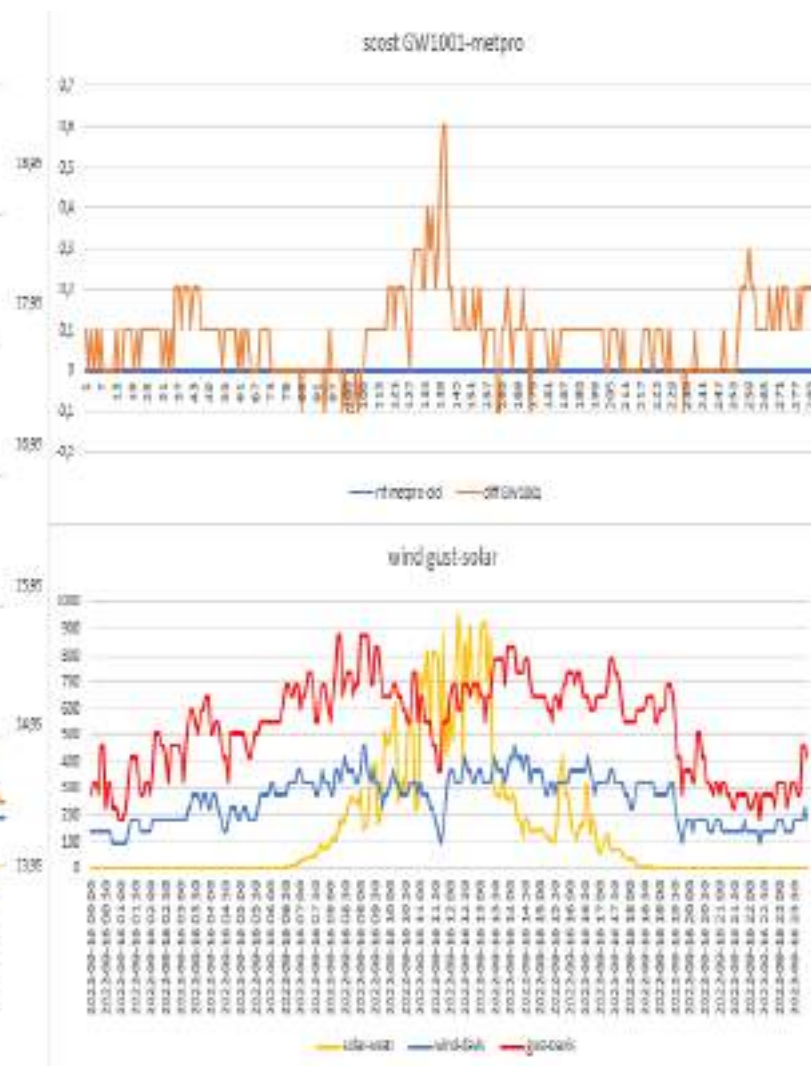
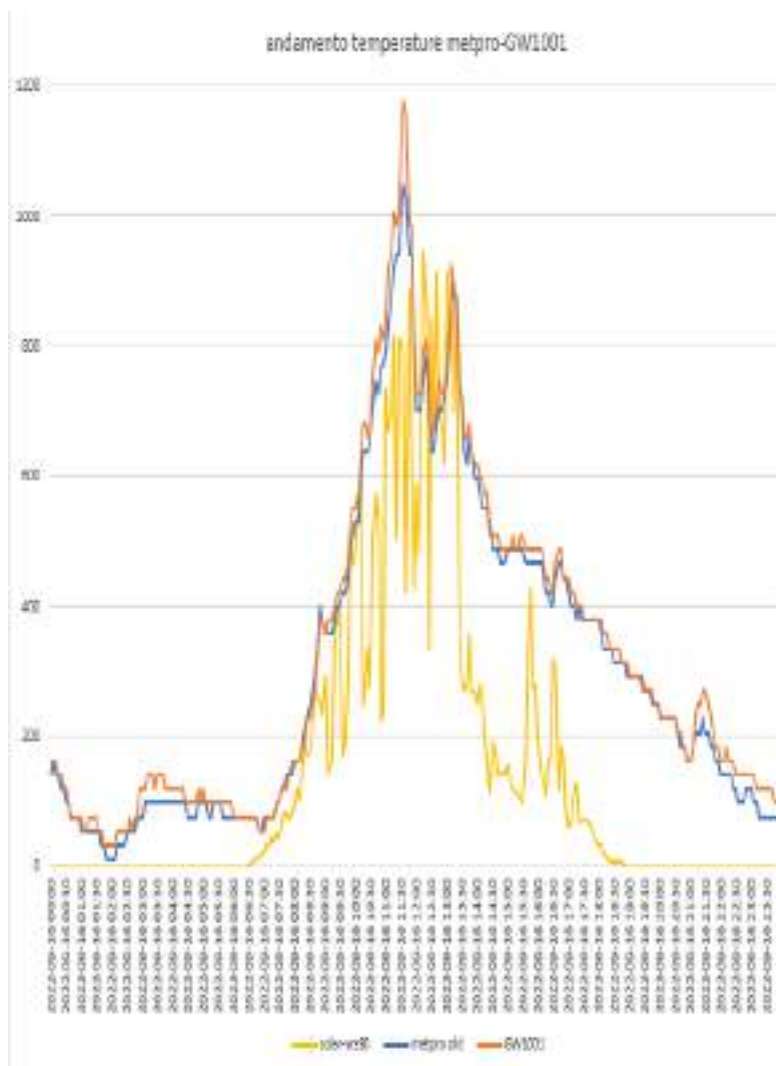
Rad-02 Metspec (Probe sensor wh31EP ecowitt)-DAVIS 7714 Black(Probe sensor wh31EP ecowitt)-



Rad-02 Metspec (Probe sensor w h31EP ecowitt)- WITTBOY ecowitt- corr...

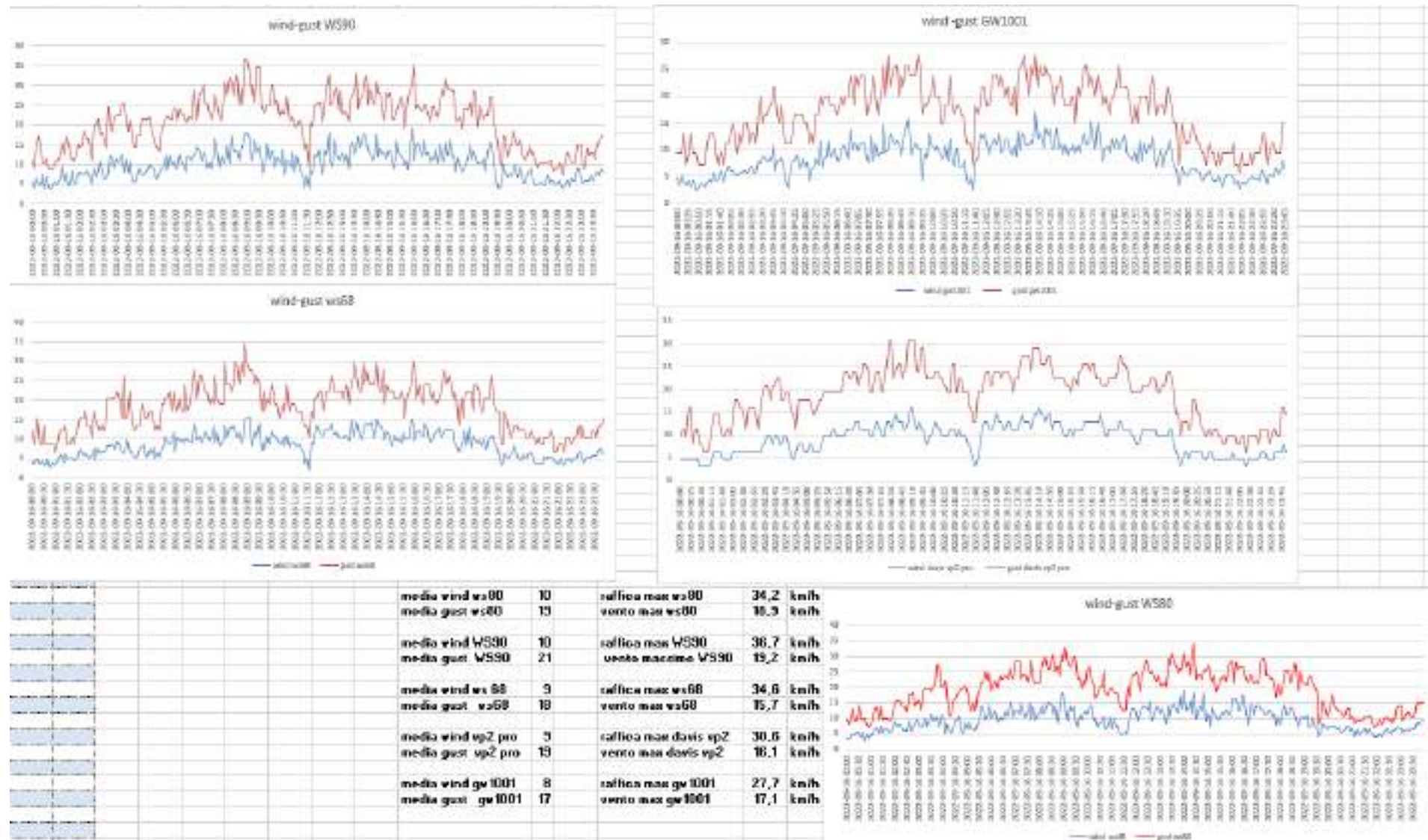


# GW1001 ecowitt-Rad-02 Metspe c (Probe sensor wh31 EP ecowitt)





## Comparison Anemometers

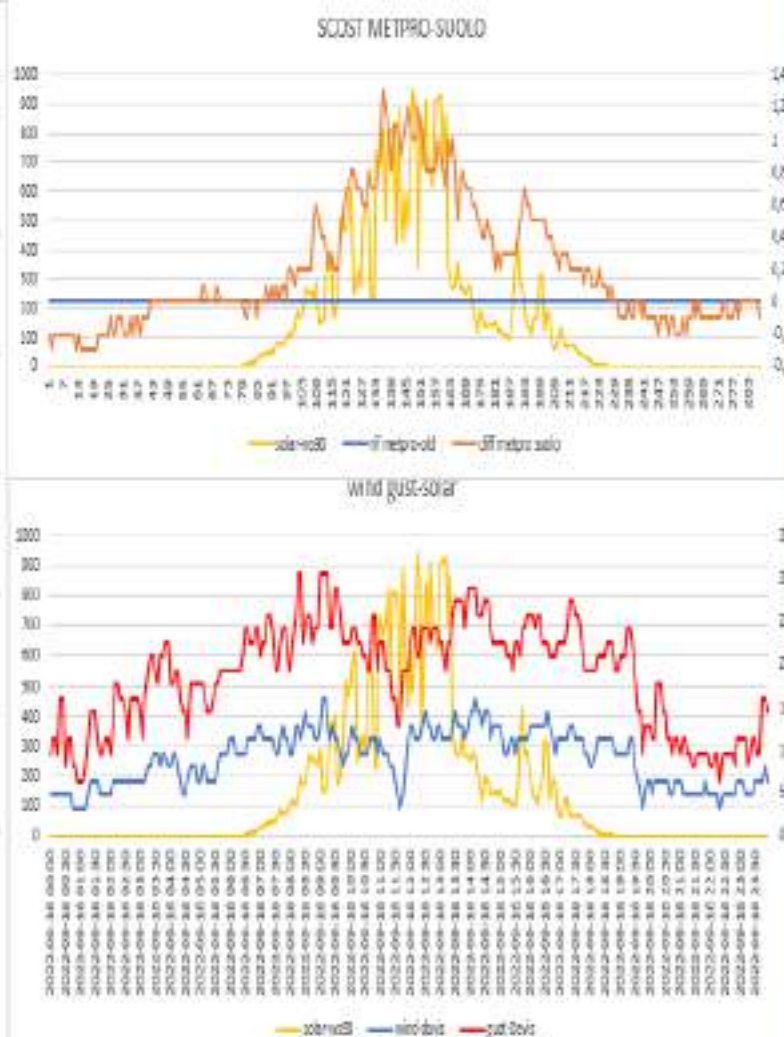
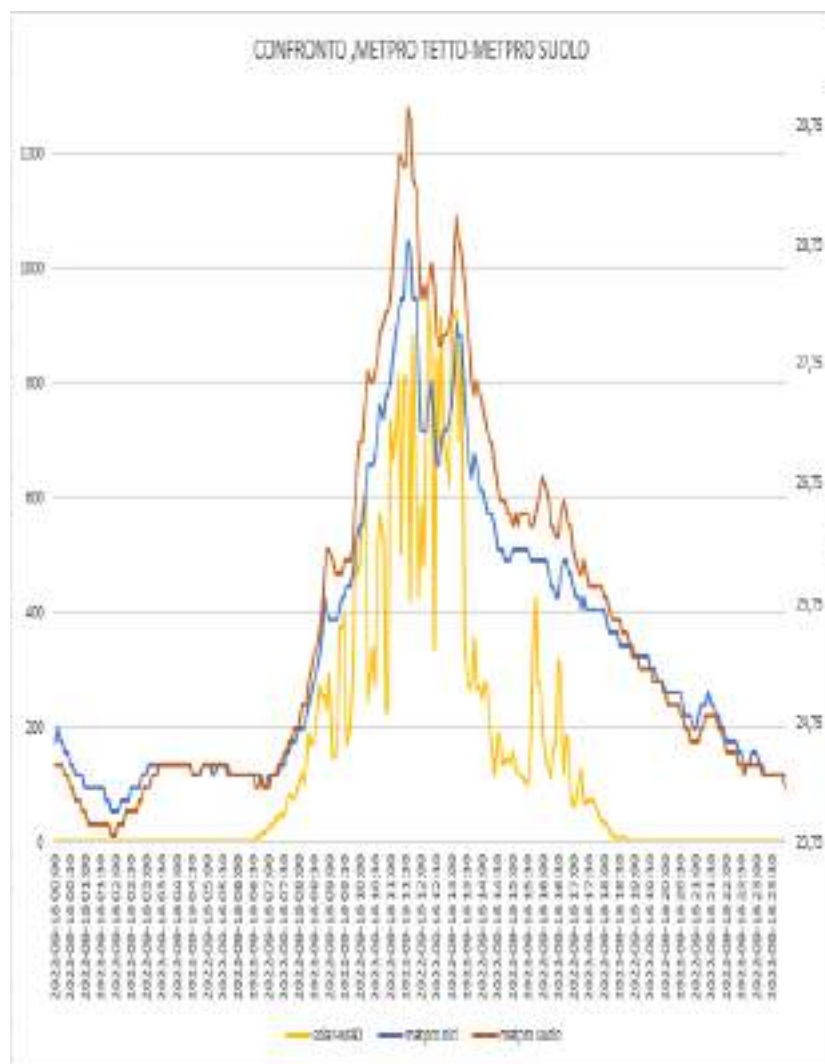


### STATISTICAL DATA (MAXIMUM MINIMUM AVERAGES)

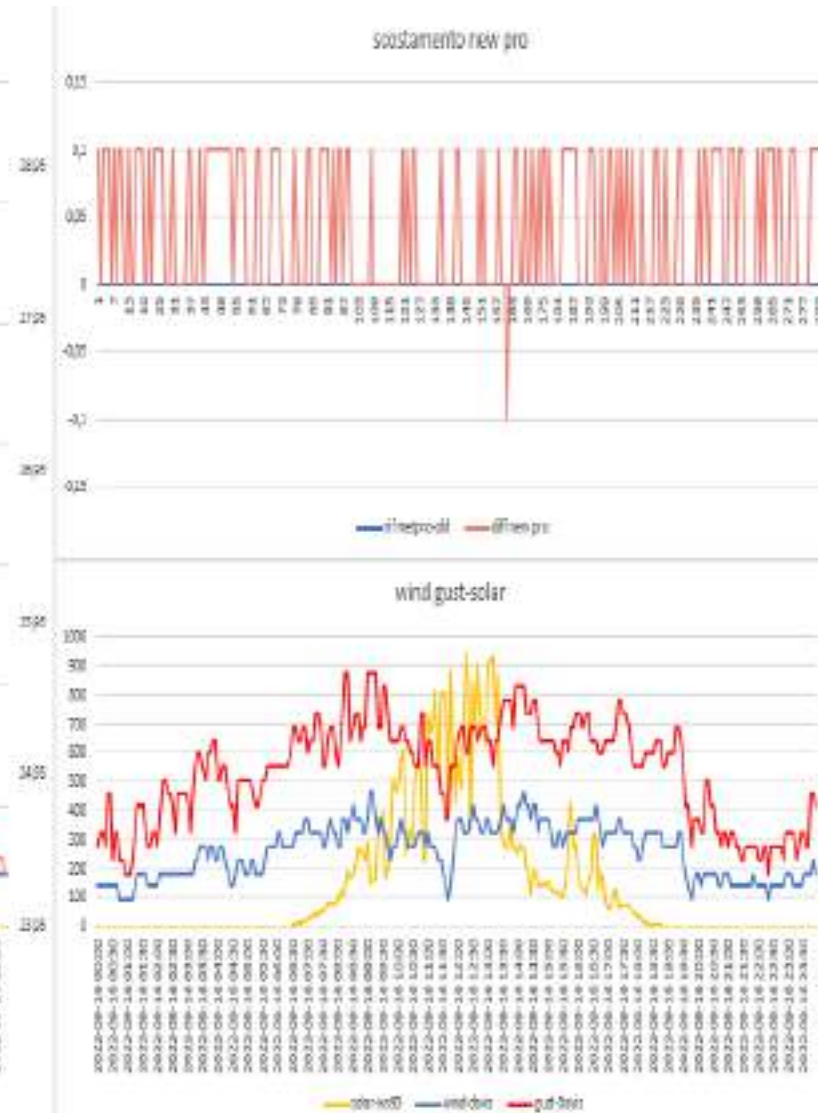
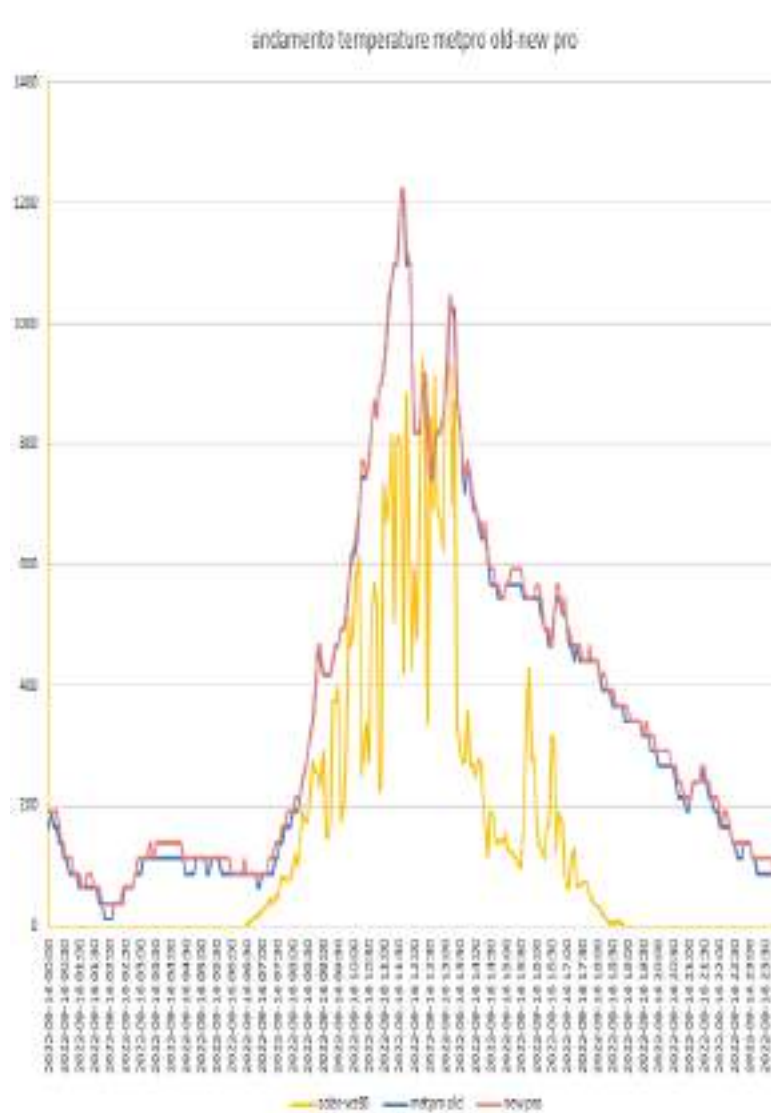
[illegible]



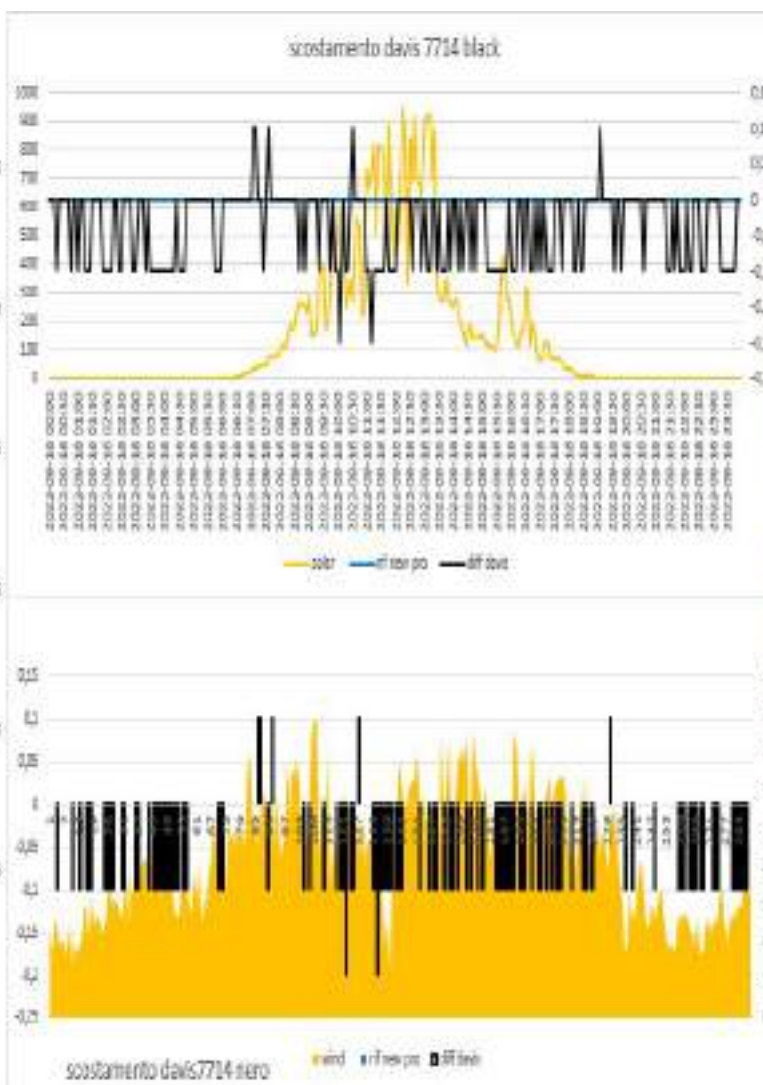
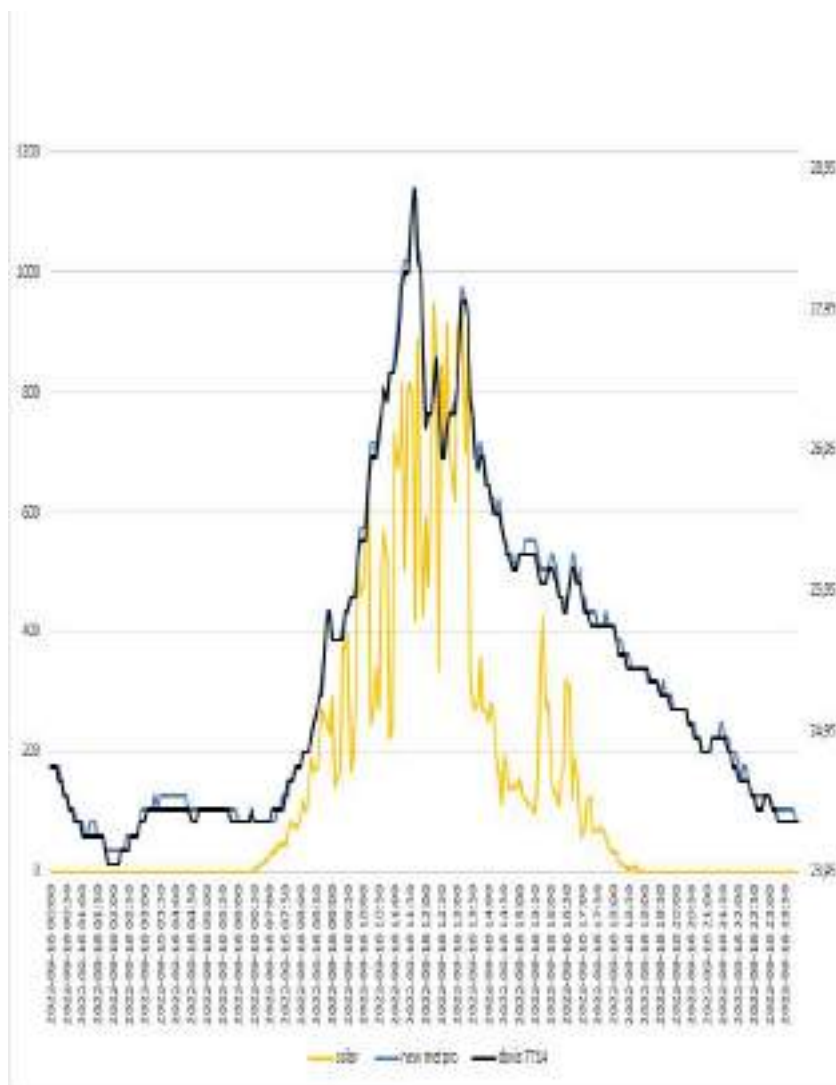
RAD-02 METSPEC (probe sensor wh31 EP ecowitt) Tetto- METEOSHIELD PRO (probe sensor wh32EP ecowitt) soil



# NEW PRO BARANI (probe sensor wh31 EP ecowitt)-M ETEOSHIELD PRO (BARANI) probe sensor wh31 EP

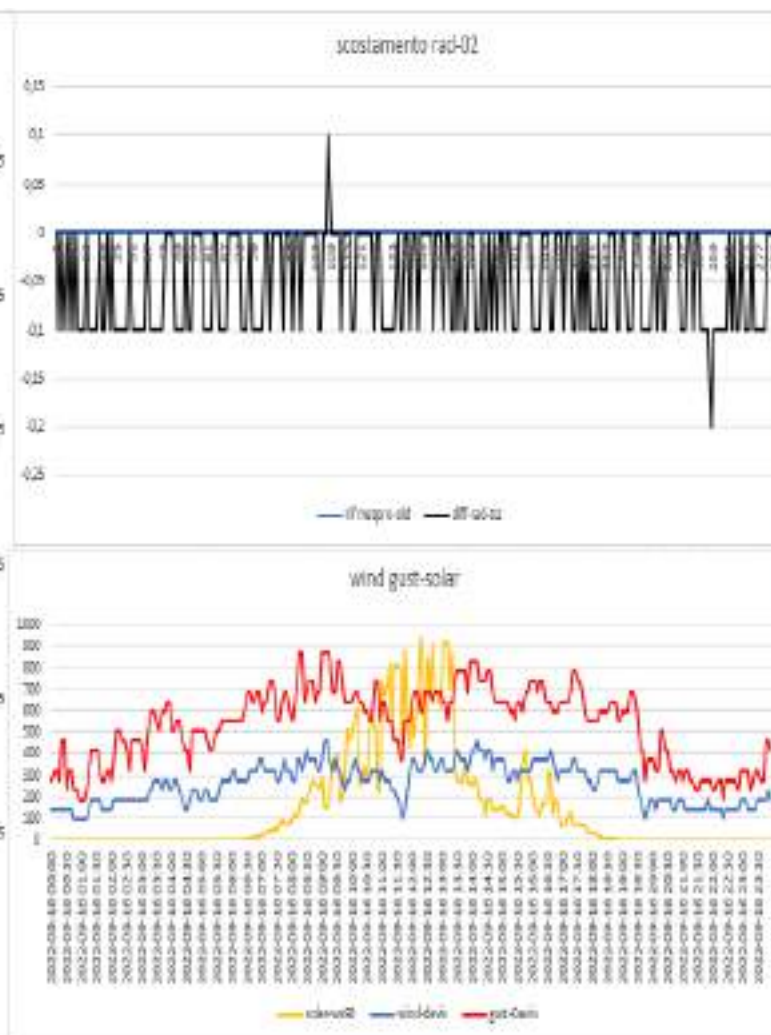
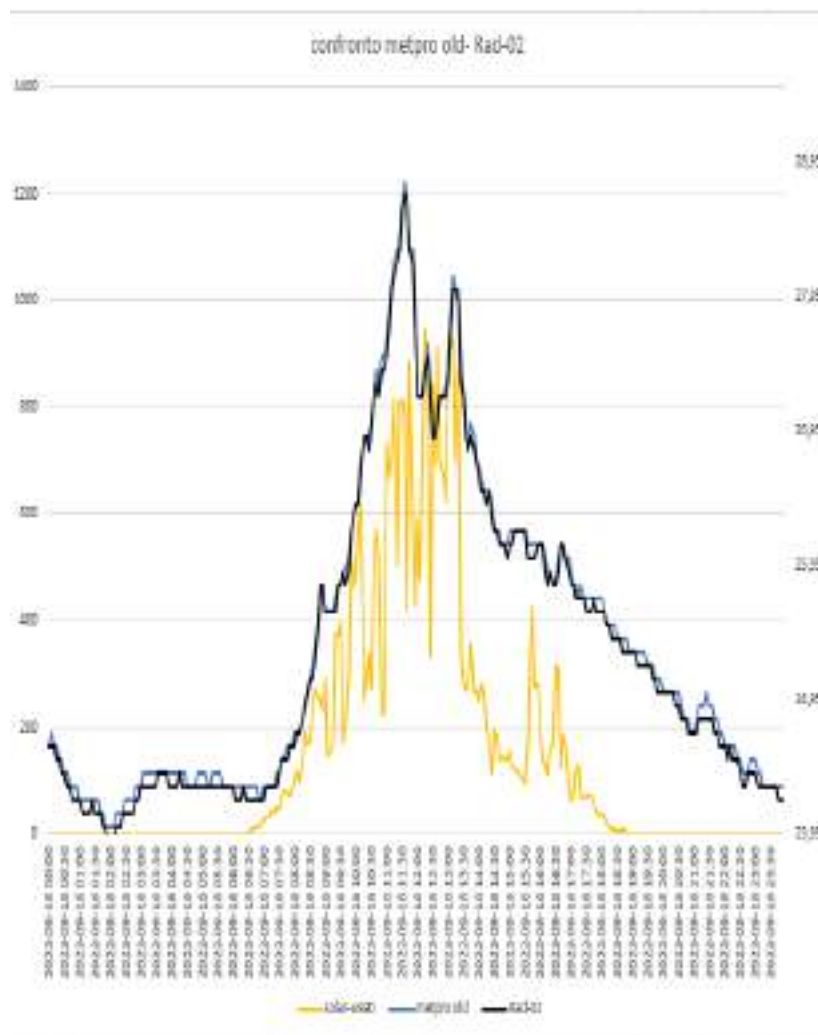


NEW PRO BARANI (probe sensor wh31 EP ecowitt)- DAVIS 7714 black (Probe sensor wh31EP ecowitt)

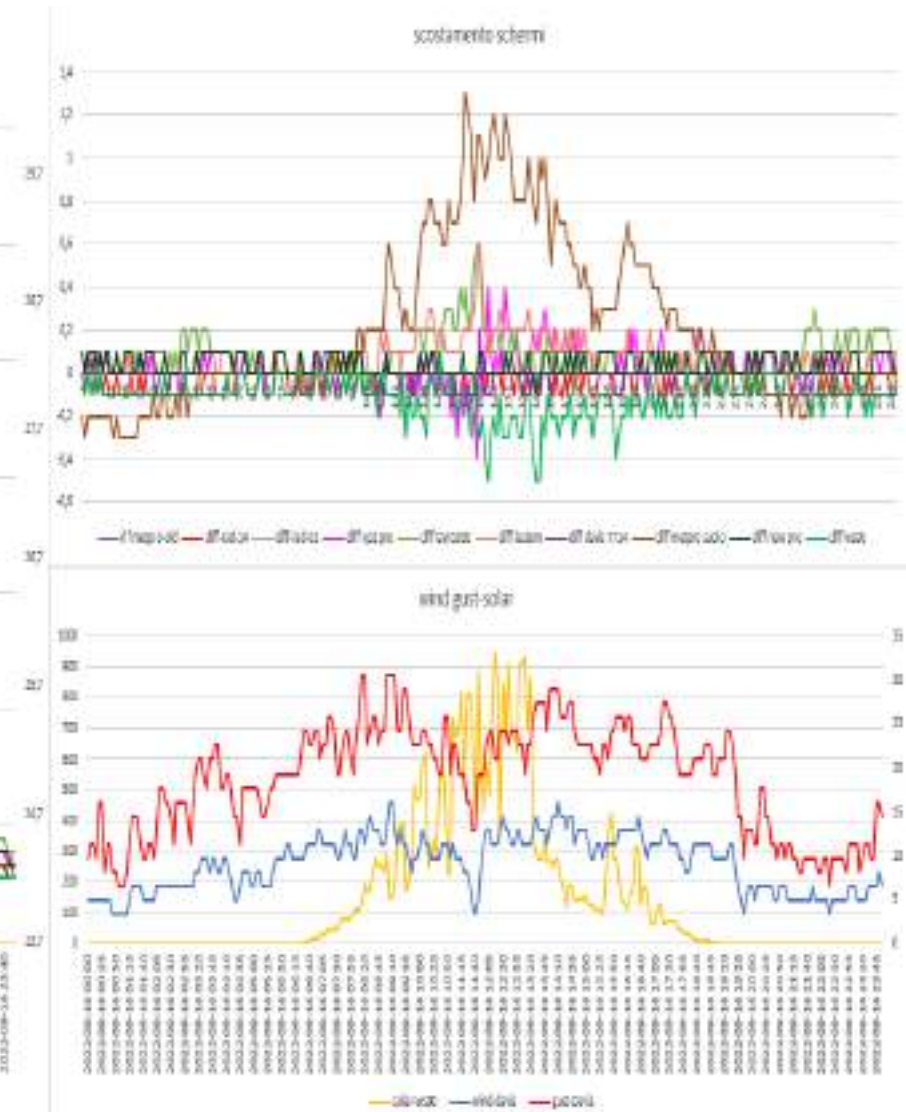
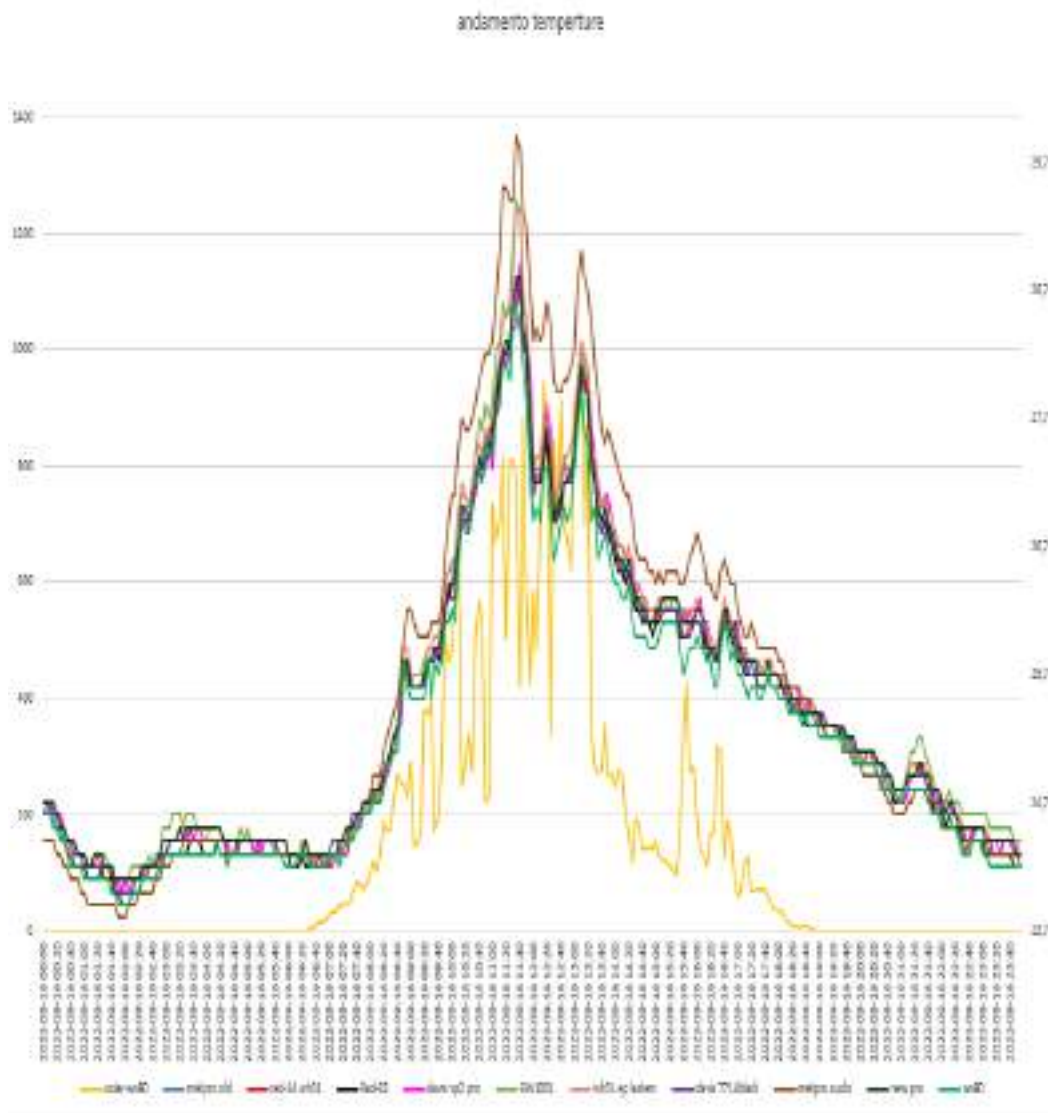




METPRO OLD (probe sensor wh32EP ecowitt) -RAD-02 (probe sensor wh31 EP ecowitt)



## general summary



RAIN 24h