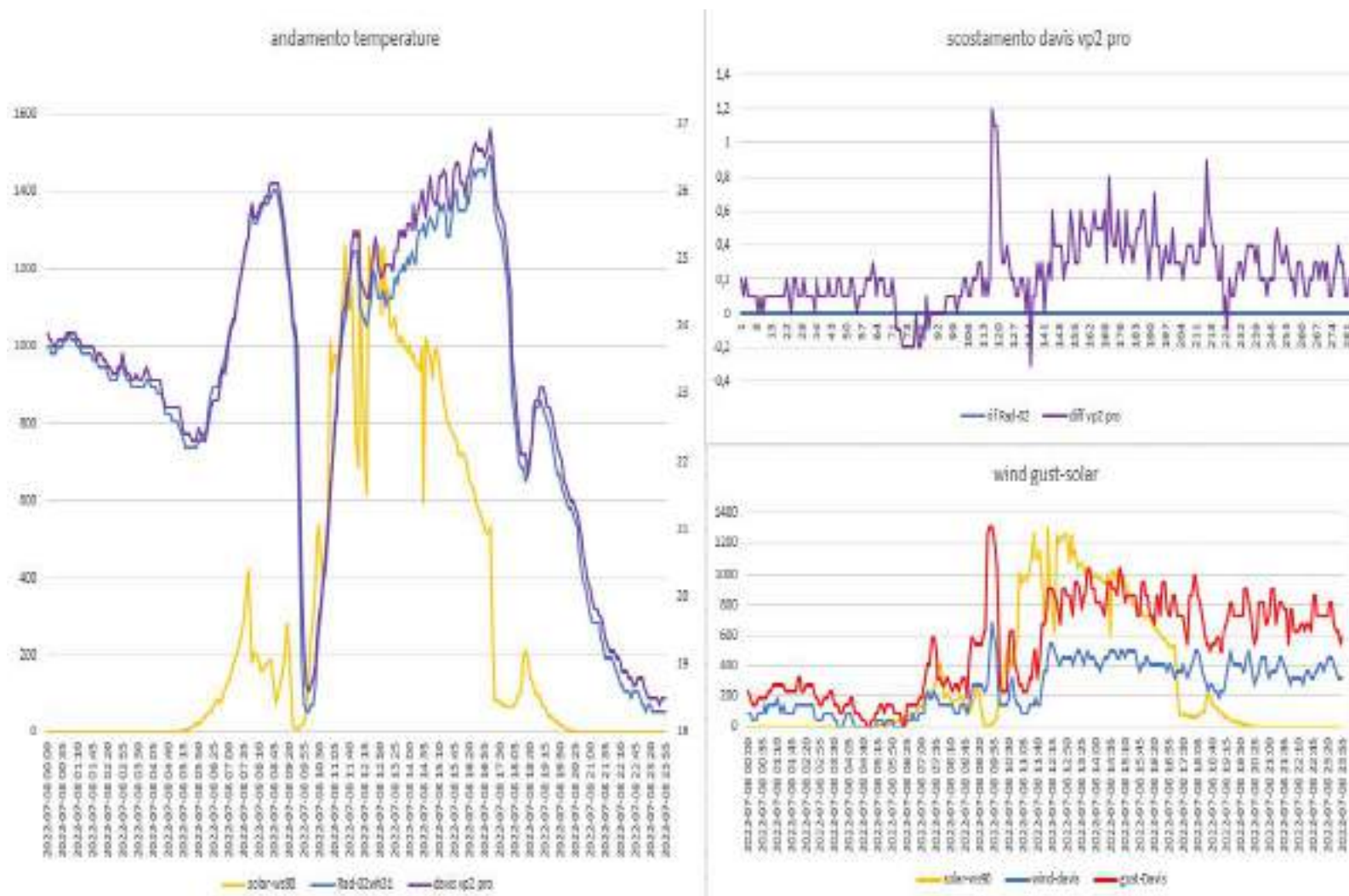
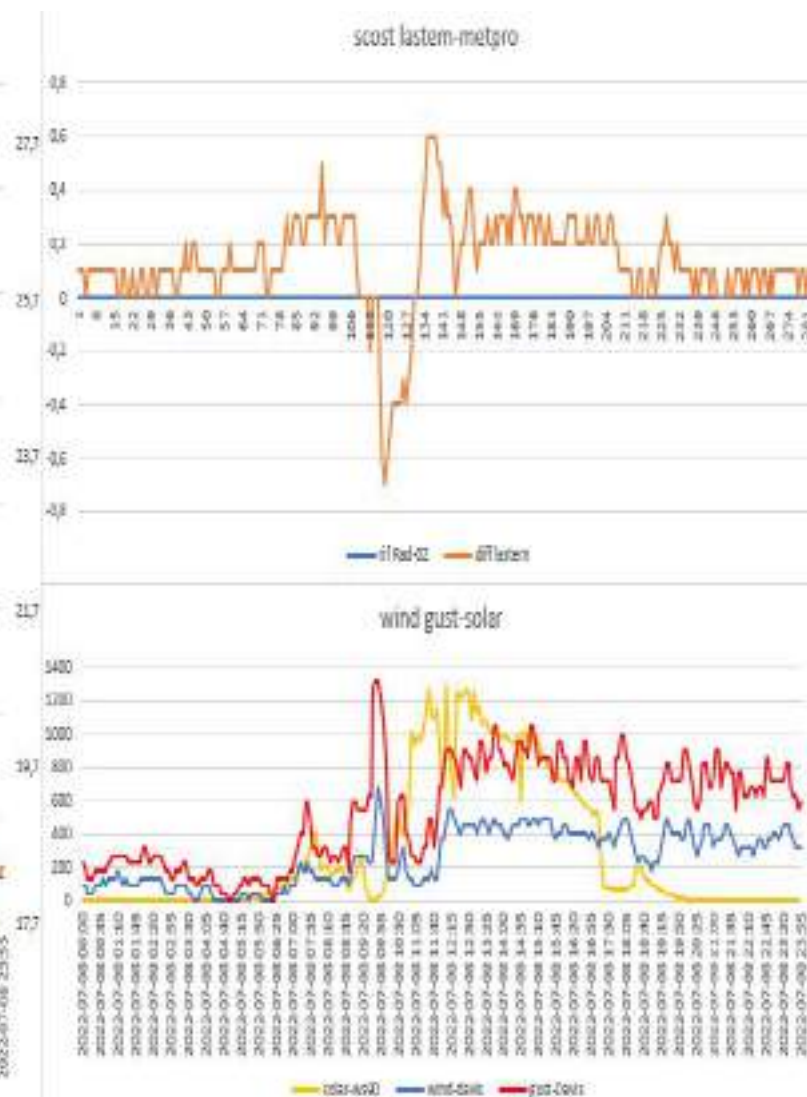
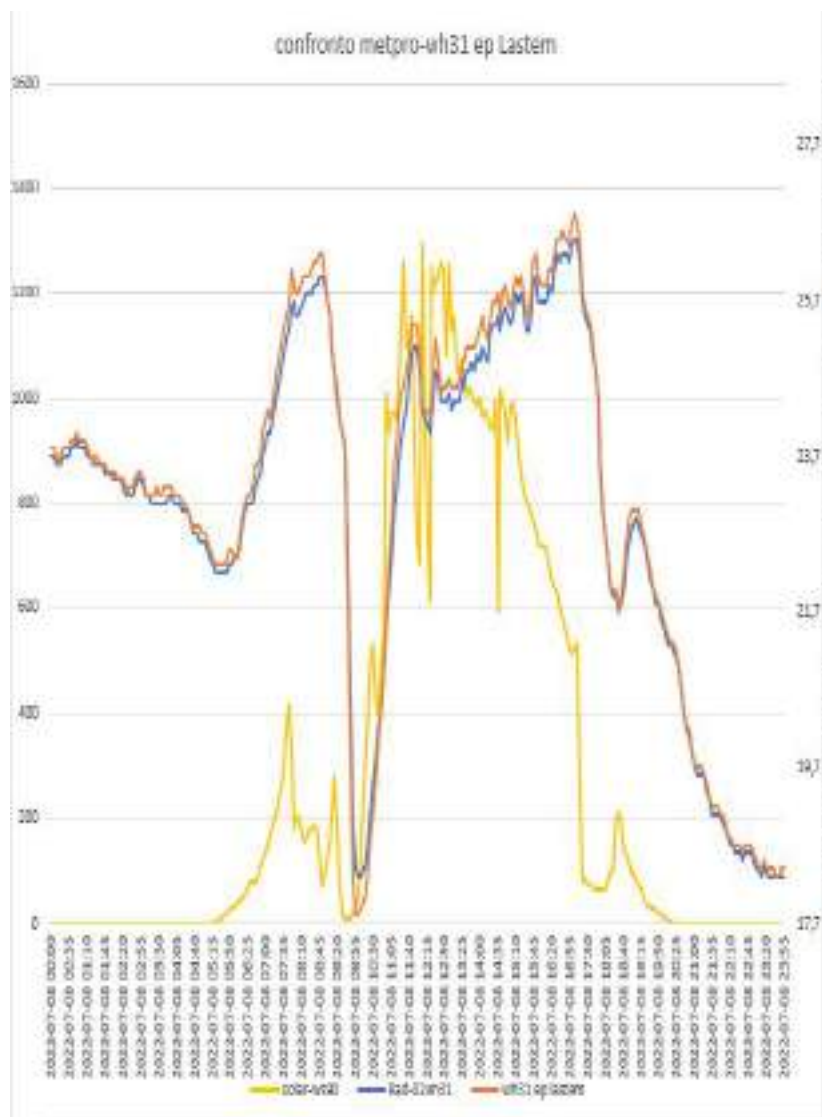


## ANDAMENTO SCHERMI DEL 08-07-2022

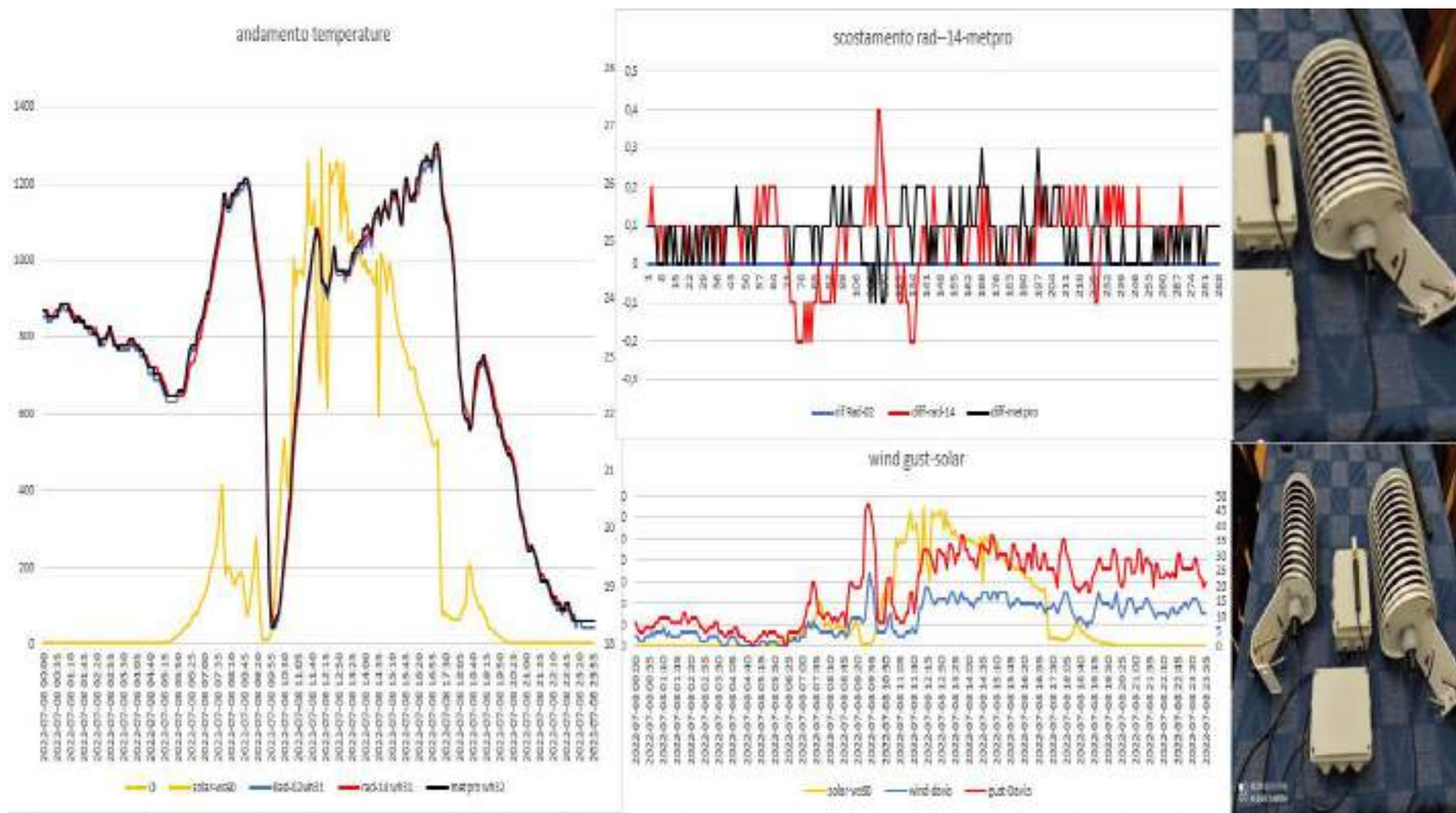
Davis vp2 pro- Rad-02 (sensore sonda wh31EP ecowitt)



Rad-02 Metspec (sensore sonda wh31EP ecowitt)- Lsi IASTEM(sensore sonda wh31EP ecowitt)

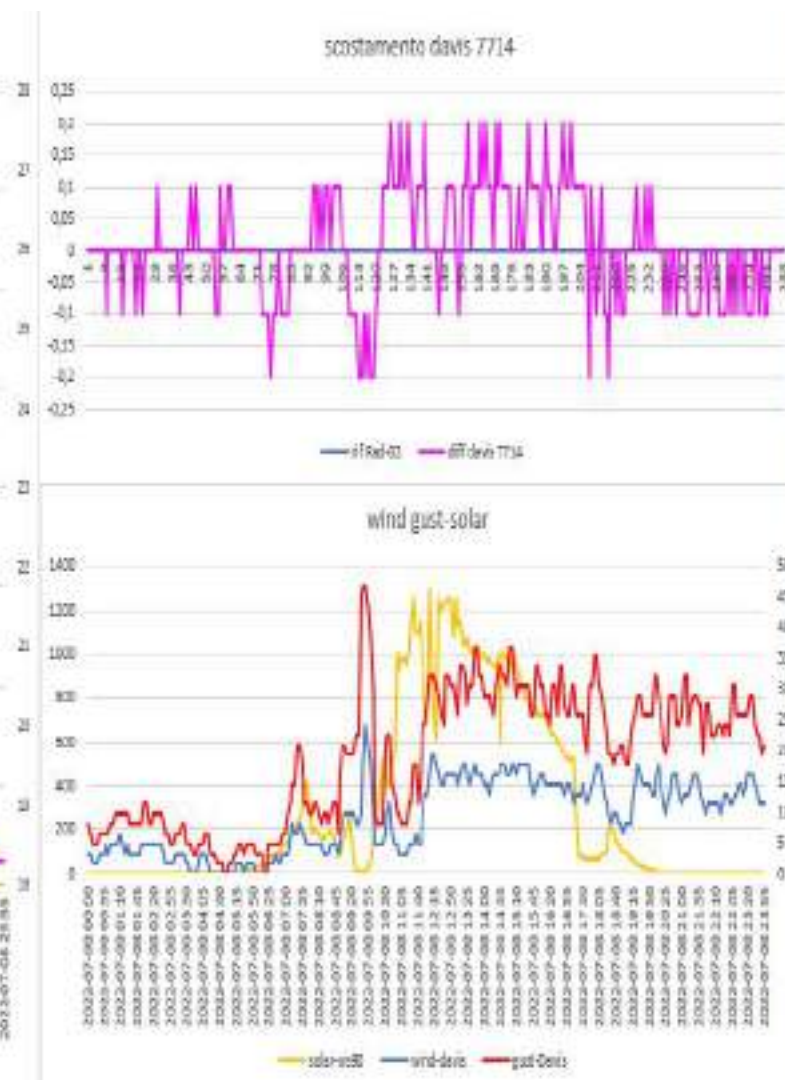
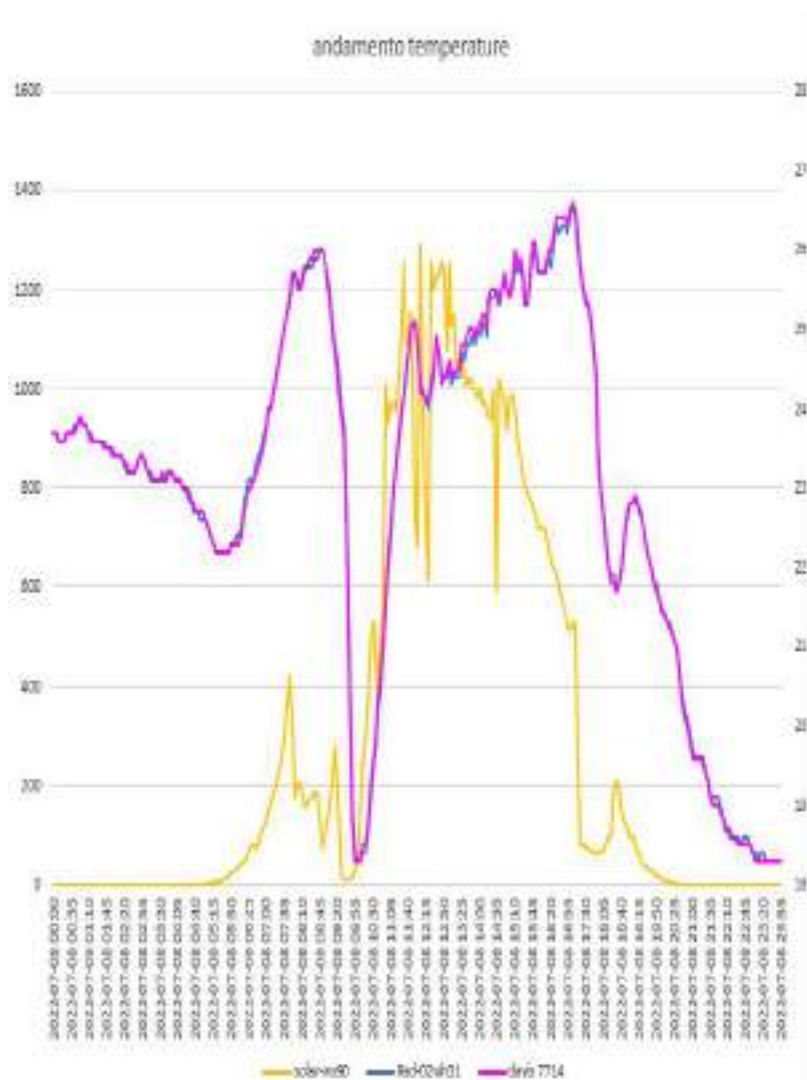


RAD-02 Metspec (sensore sonda WH31EP ecowitt) – METEOSHIELD PRO-Rad14 Metspec (sensore sonda wh32EP-WH31ep ecowitt)

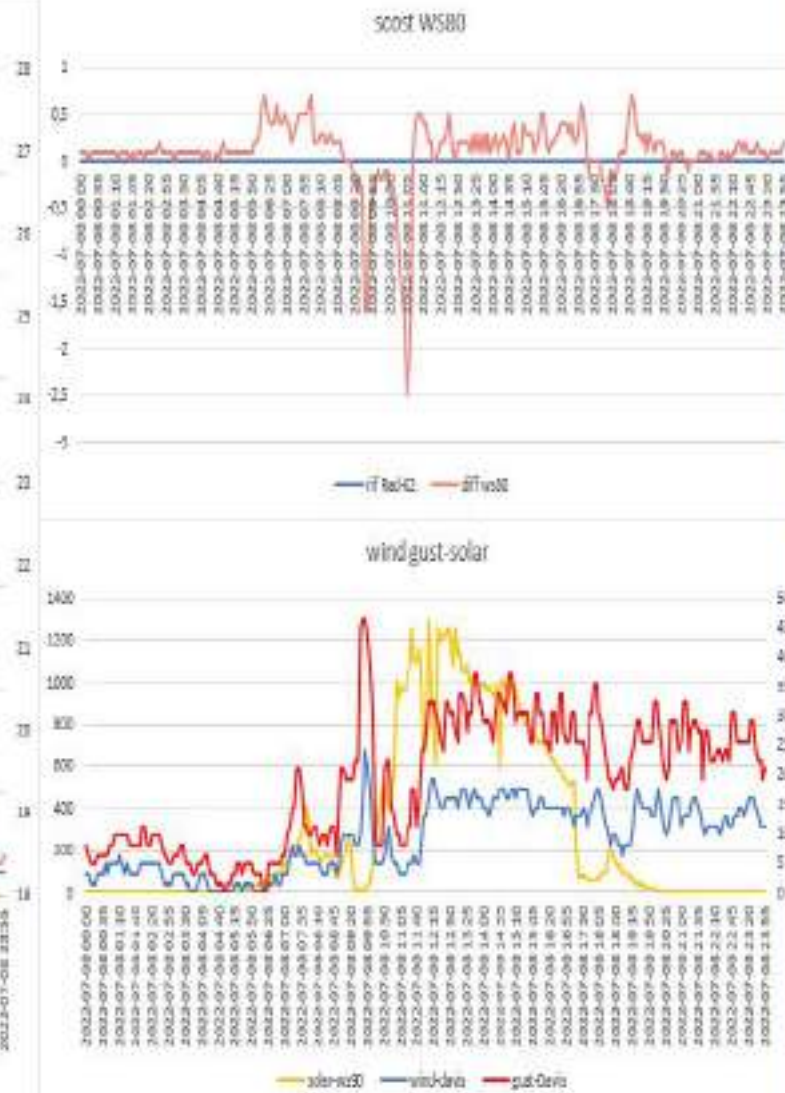
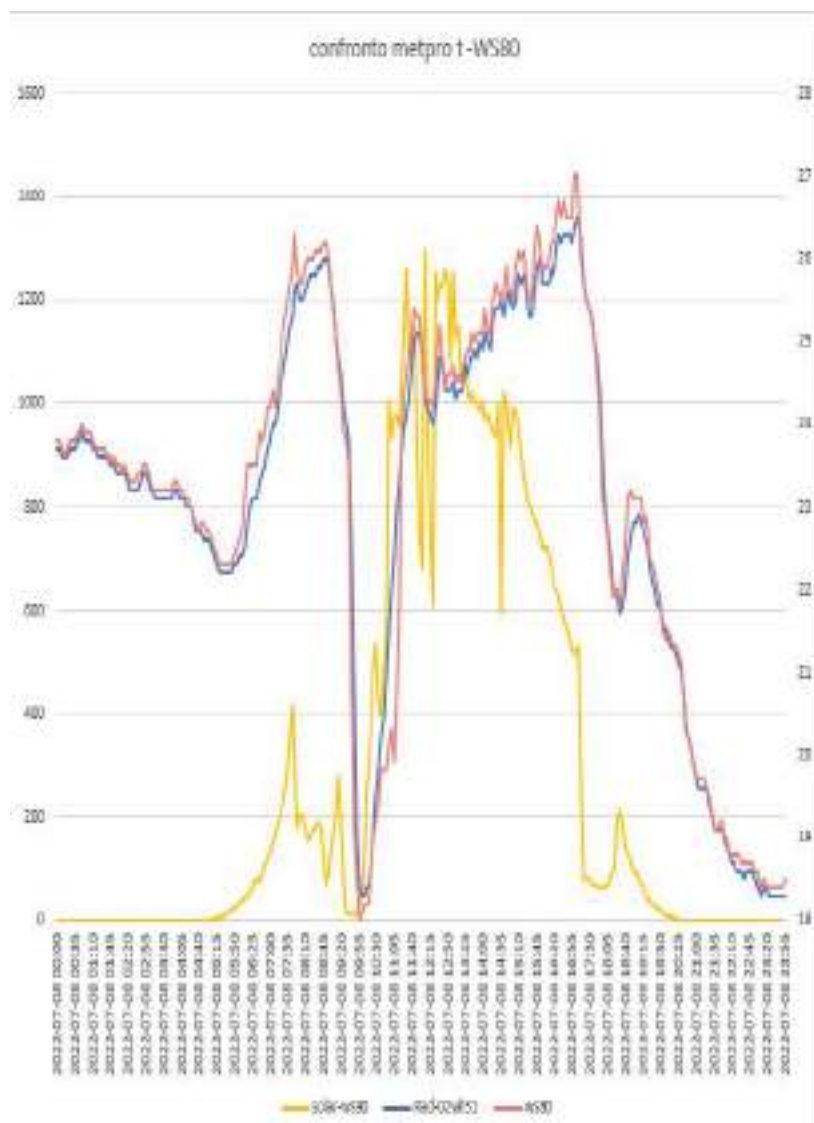




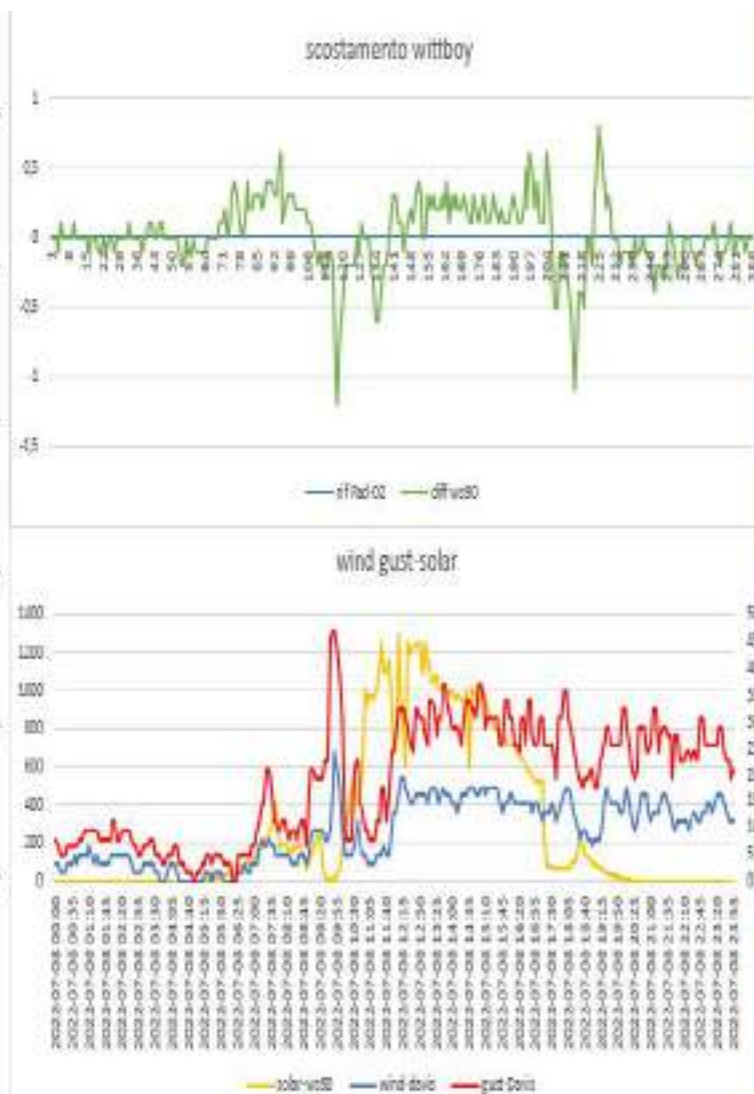
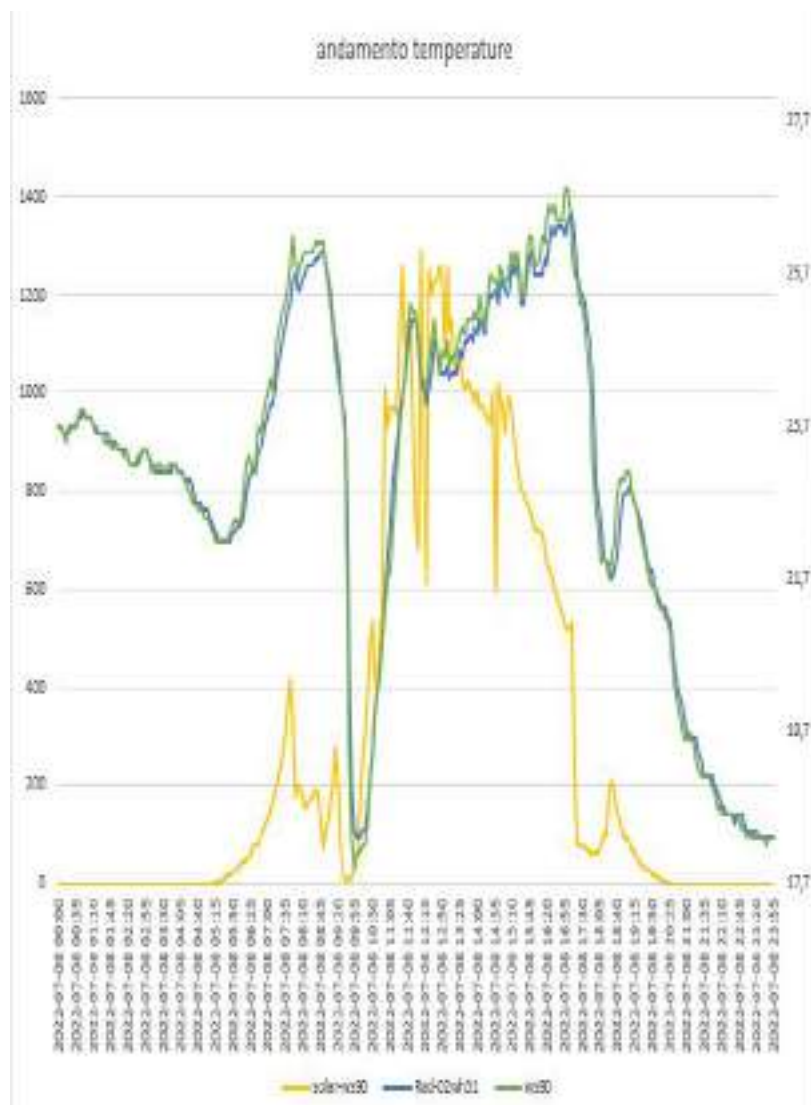
DAVIS 7714(sensore sonda wh31EP ecowitt)-Rad-02 Metspec (sensore sonda wh31EP ecowitt)



WS80 ecowitt- Rad-02 Metspec (sensore sonda wh31 EP ecowitt)

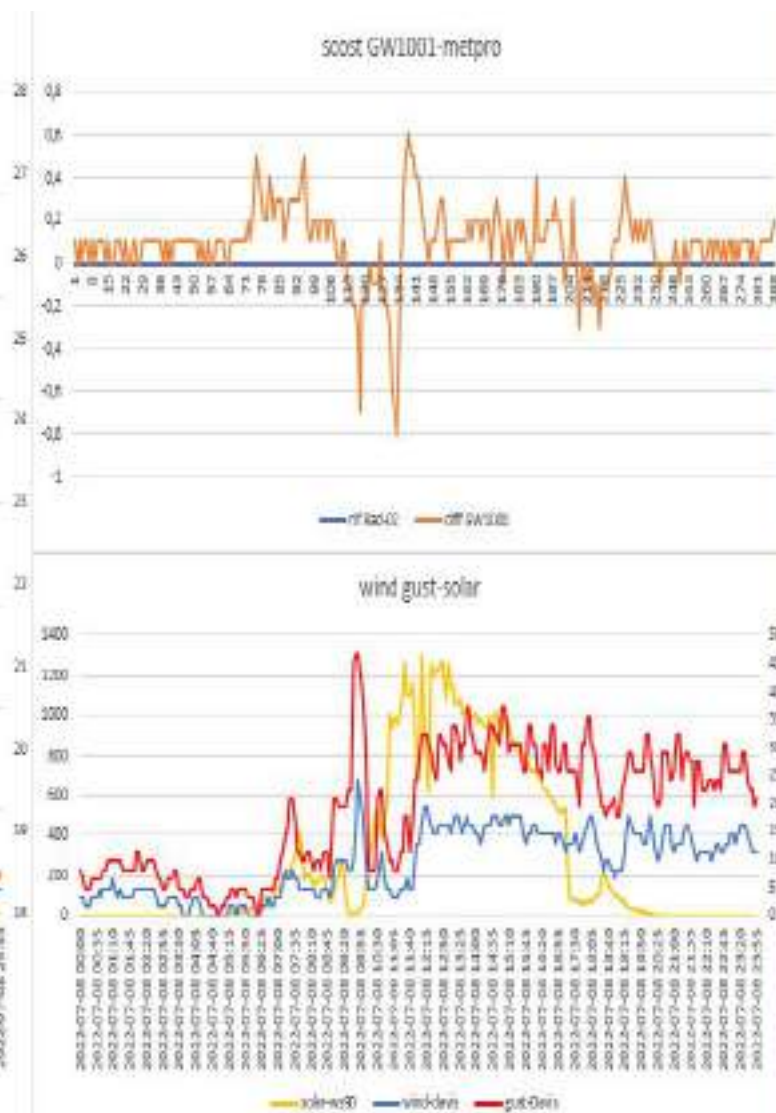
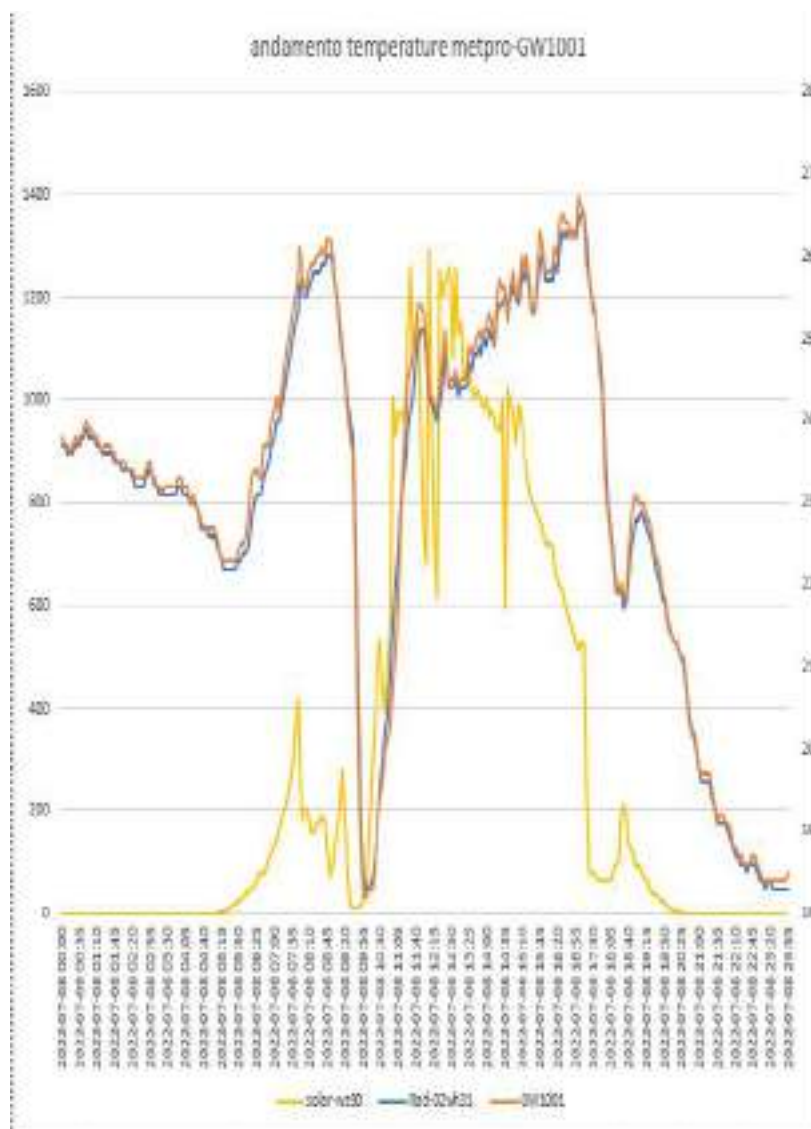


WITTBOY ecowit- Rad-02 Metspec (sensore sonda wh31EP ecowitt)

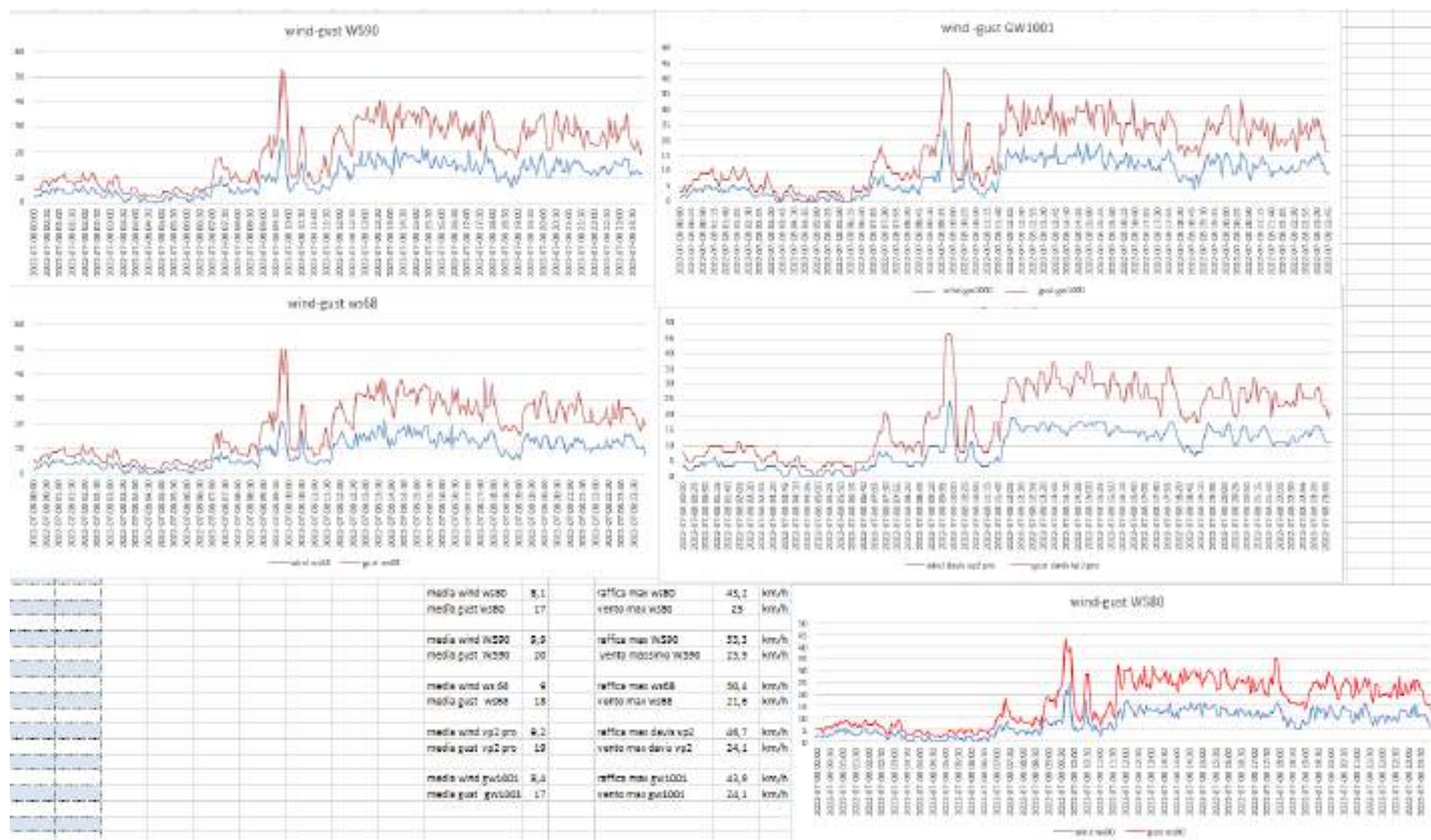




# GW1001 ecowitt-Rad-02 Metspec (sensore sonda wh31 EP ecowitt)



# CONFRONTO A NEMOMETRI

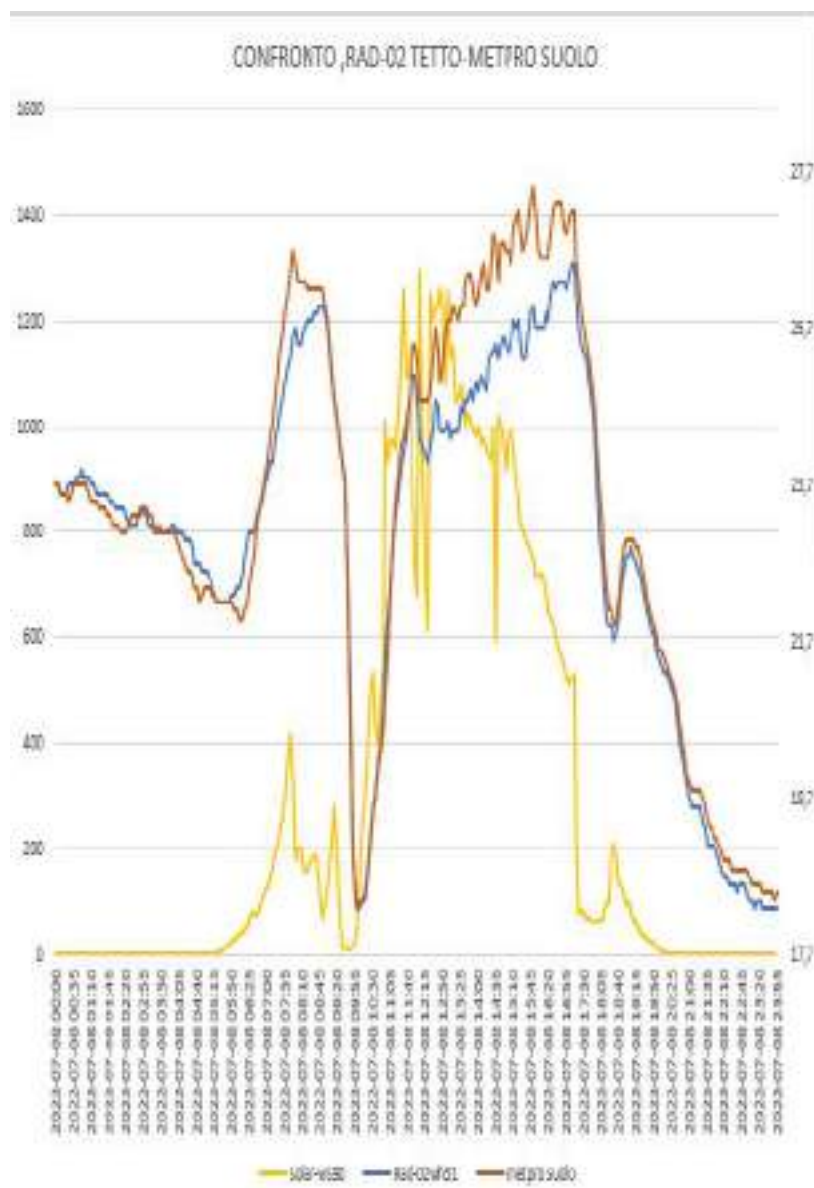




DATI STATISTICI (MEDIE MASSIME MINIME )

vento medio 24H	9,186111111	km/h	vento medio ore di sole	10,73675								
media met pro	23,08645833		scost medio met-pro	0,077431								
max met pro	26,7		scost max metpro	0,3								
min met pro	18,3		scost min met-pro	-0,1								
media GW1001	23,09409722		scost medio GW1001	0,085069								
max GW1001	26,7		scost max GW1001	0,6								
minima GW1001	18,2		scost min GW1001	-0,8								
media davis vp2 pro	23,01701389		scost medio davis vp2 pro	0,231944								
max davis vp2pro	26,6		scost max davis vp2 pro	1,2								
min davis vp2 pro	18,3		scost min davis vp2 pro	-0,3								
media rad-14	23,07916667		scost medio rad-14	0,070139								
max rad-14	26,6		scost max rad-14	0,4								
min rad-14	18,4		scost min rad-14	-0,2								
media rad-02	23,00902778											
max rad-02	26,5											
min rad-02	18,3											
media lastem	23,13576389		scost medio lastem	0,126736		media WS80	23,09930556		scost medio WS80	0,09028		
max lastem	26,8		scost max lastem	0,6		max WS80	27		scost max WS80	0,7		
min lastem	17,8		scost min lastem	-0,7		min WS80	18		scost min WS80	-2,5		
media davis 7714	23,01701389		scost medio davis 7714	0,007986		media ws90	23,04529617		scost medio ws90	0,01979		
max davis 7714	26,6		scost max davis 7714	0,2		max ws90	26,8		scost max ws90	0,8		
min davis 7714	18,3		scost min davis 7714	-0,2		min ws90	17,9		scost min ws90	-1,2		

RAD-02 METSPEC (sensore sonda wh31 EP ecowitt) Tetto- METEOSHIELD PRO (sensore sonda wh32EP ecowitt) Suolo



## Riepilogo generale

