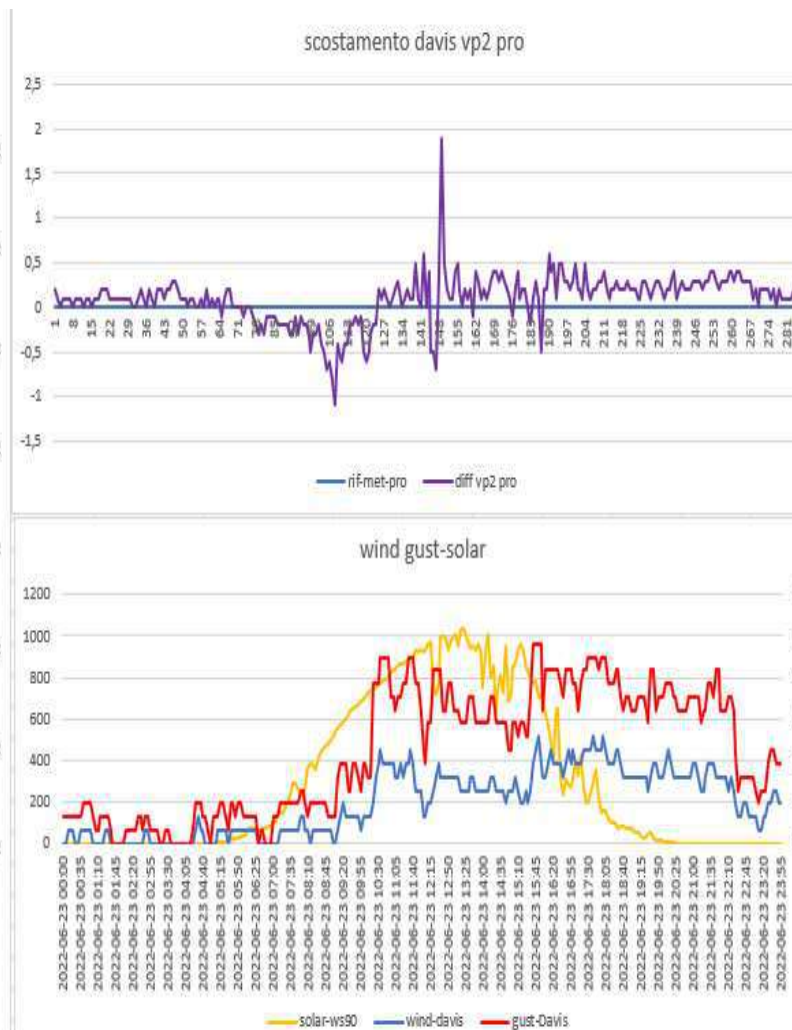
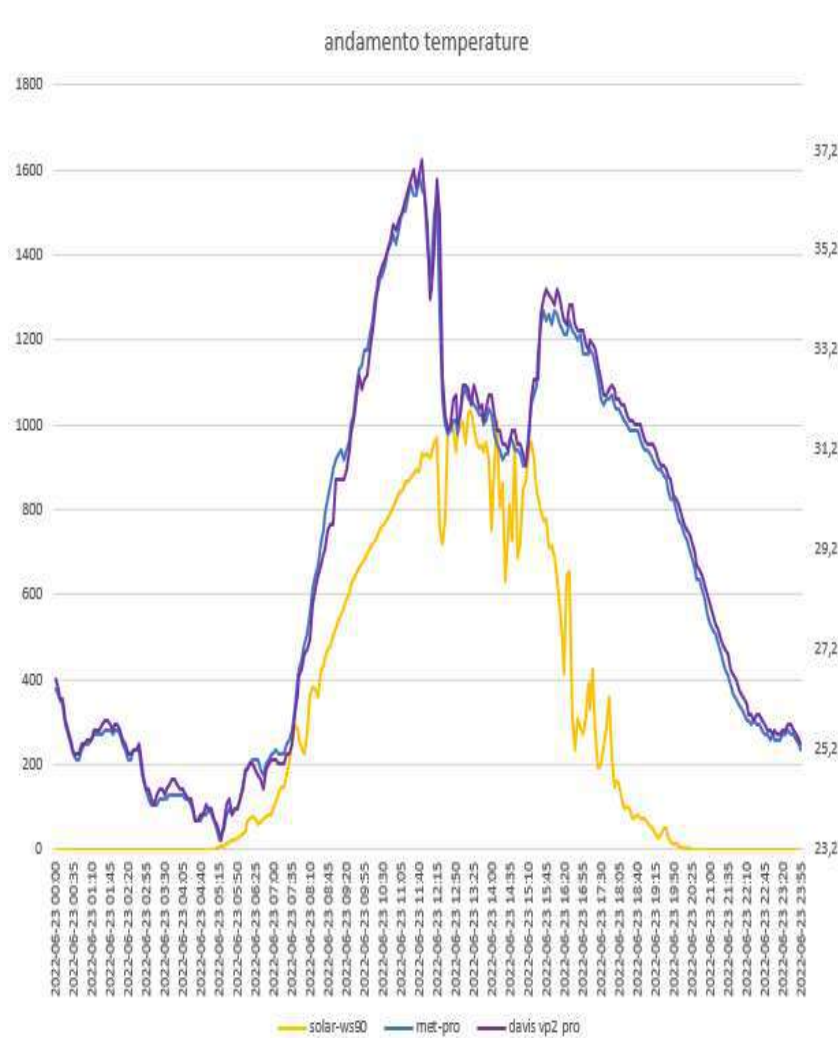
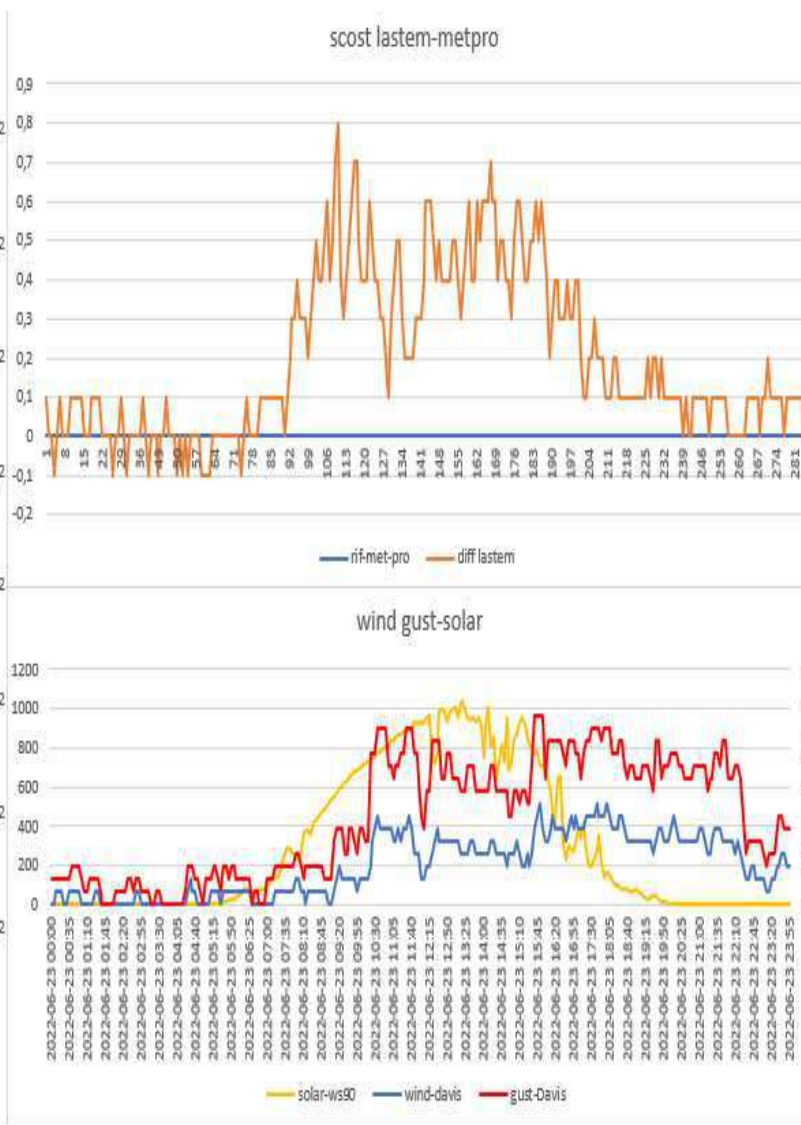
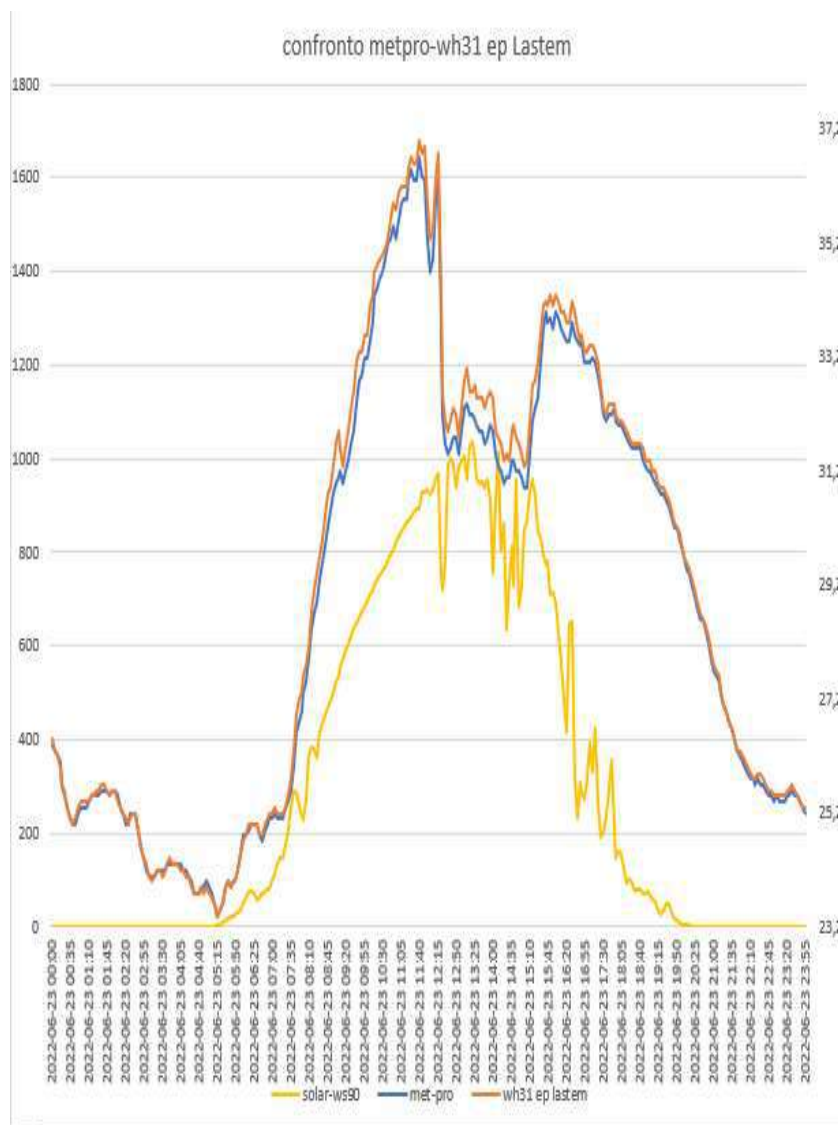


## ANDAMENTO SCHERMI DEL 23-06-2022

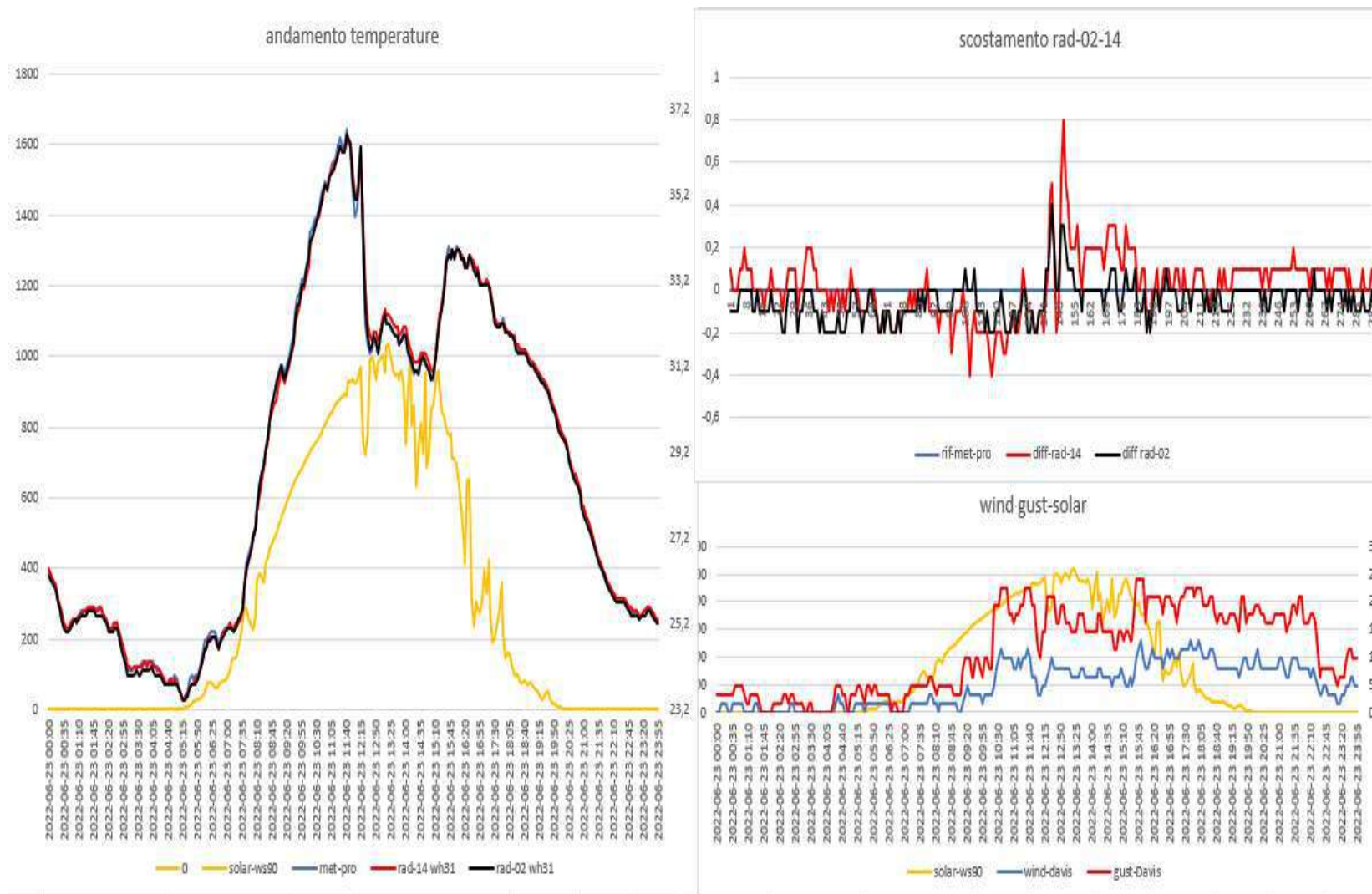
Davis vp2 pro- METEOSHIELD PR O (sensore sonda wh32EP ecowitt)



Lsi IASTEM(sensore sonda wh31EP ecowitt) - METEOSHIELD PRO (sensore sonda wh32EP ecowitt)

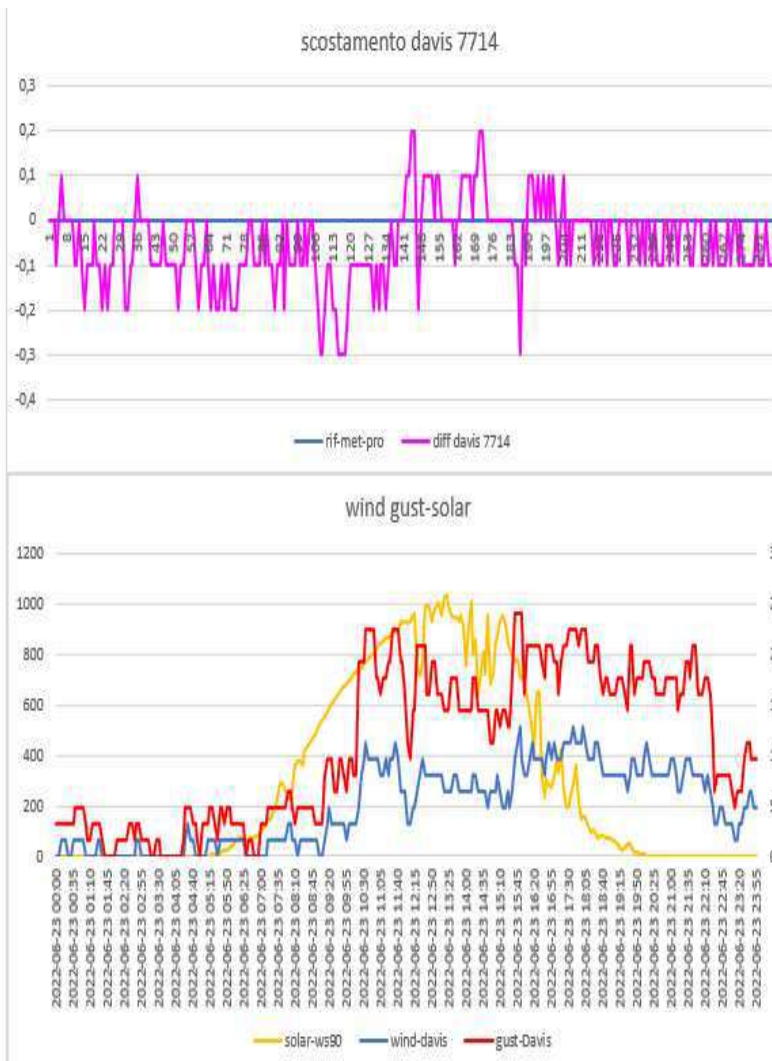
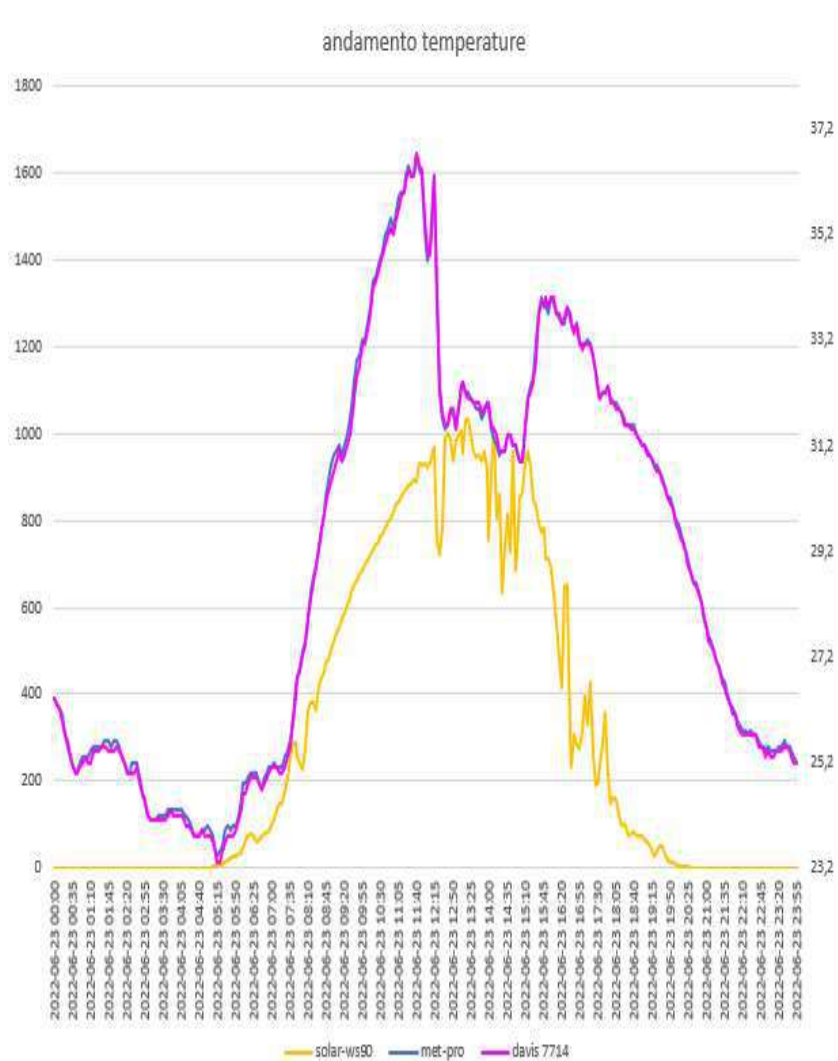


RAD-02-14(sensore sonda WH31EP ecowitt) – METEOSHIELD PRO (sensore sonda wh32EP ecowitt)

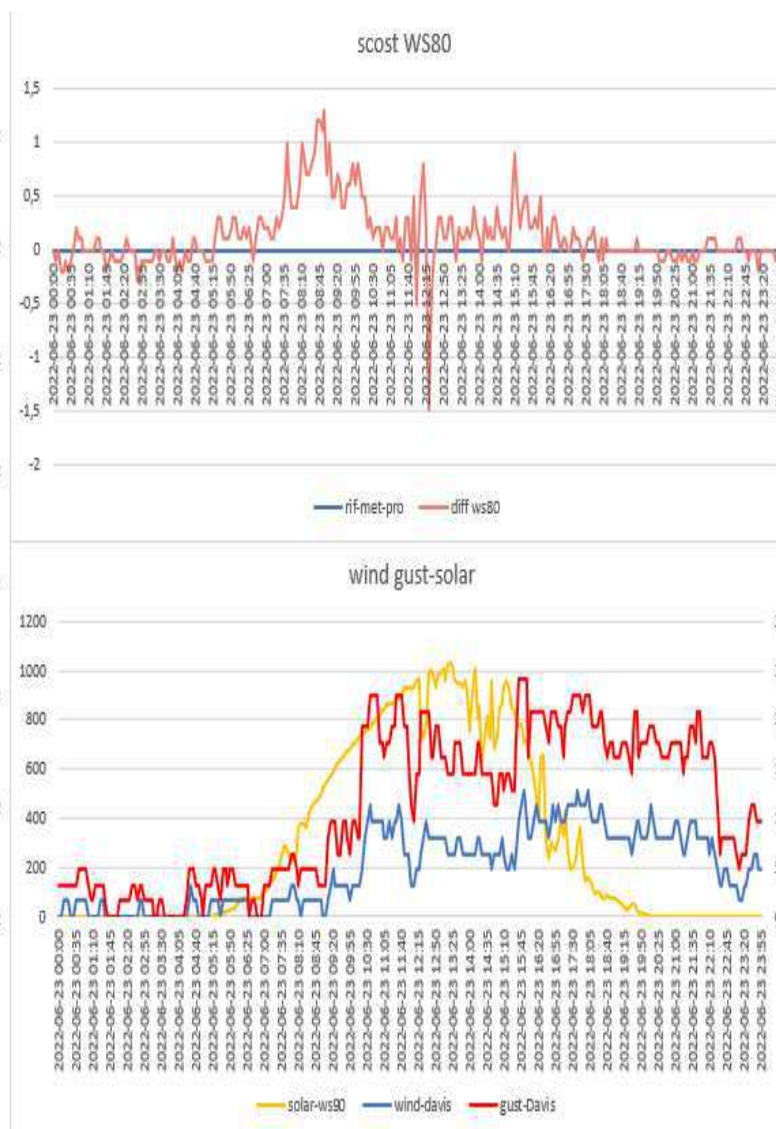
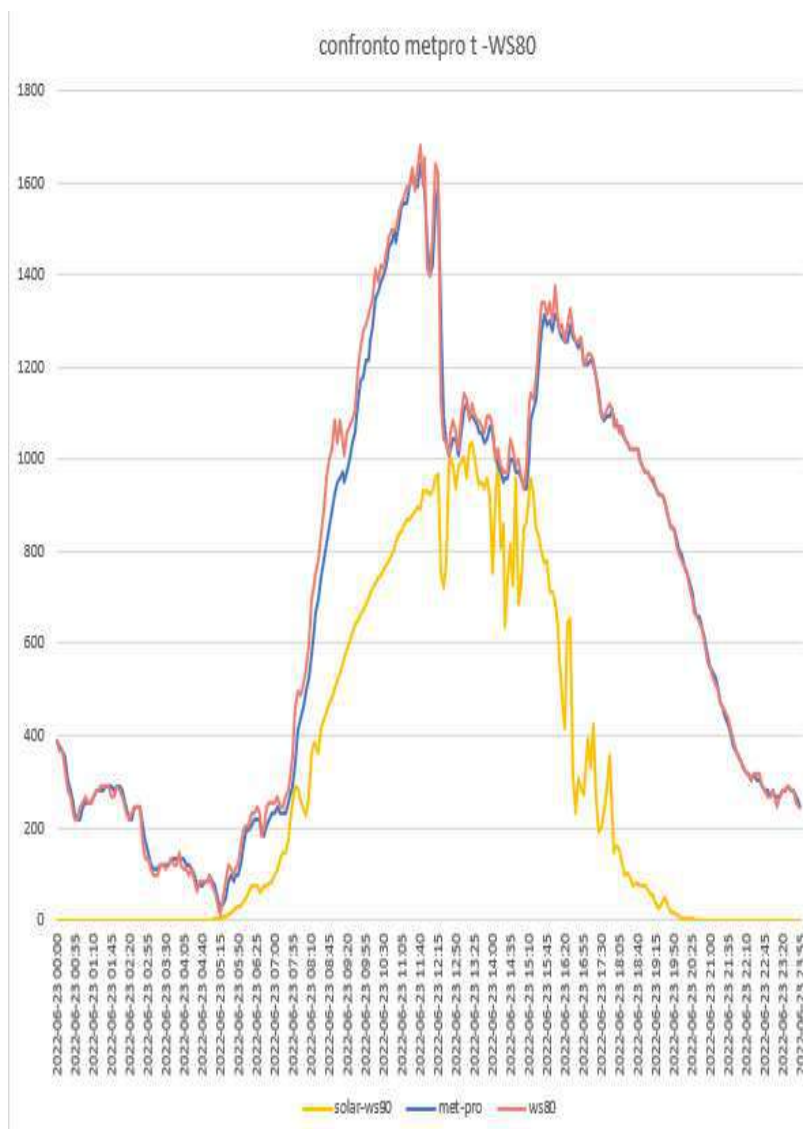




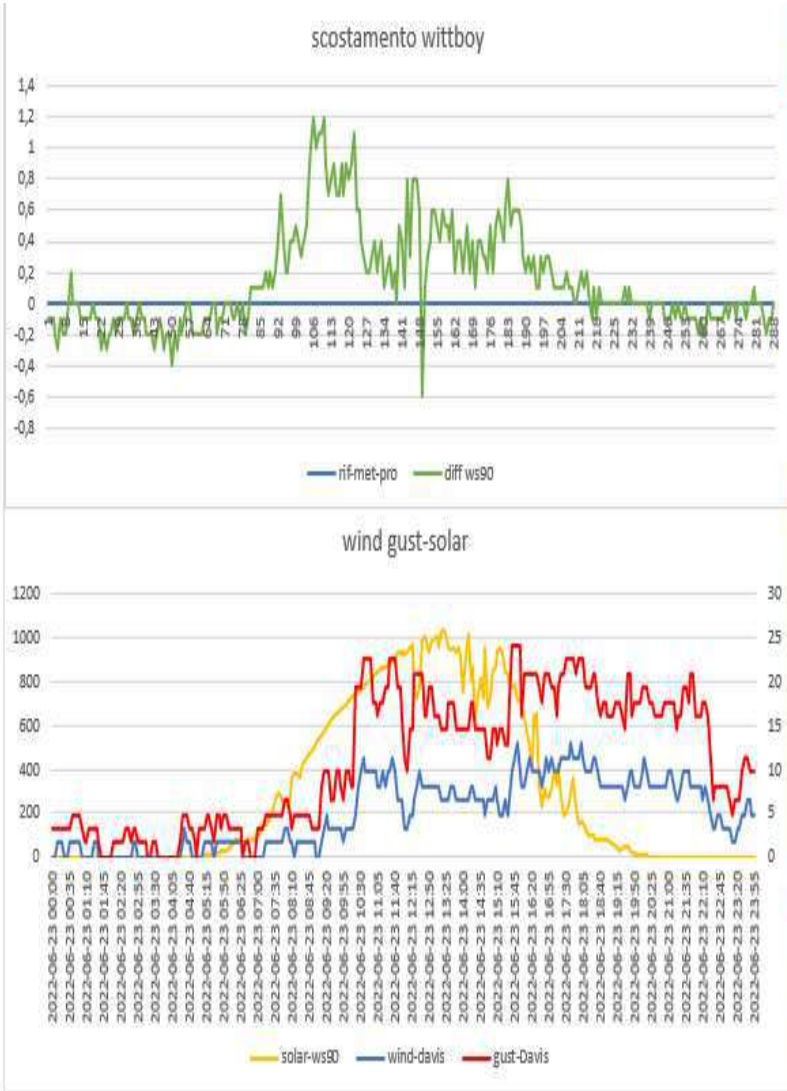
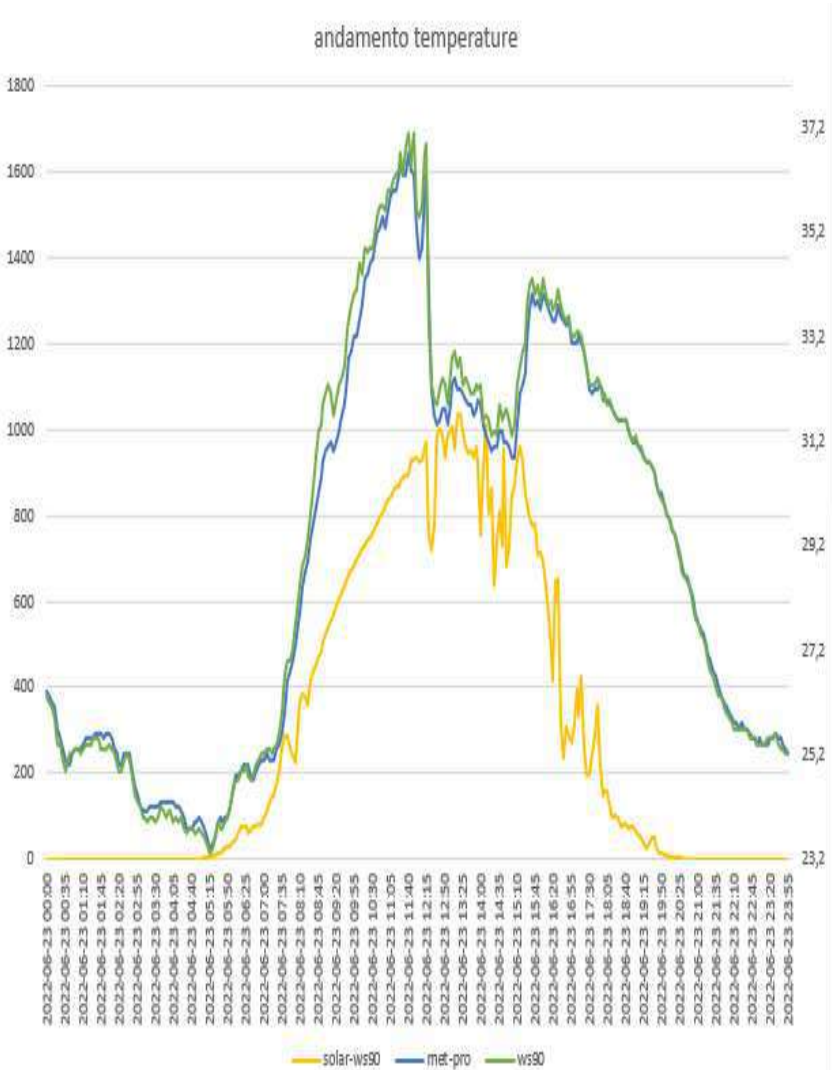
DAVIS 7714(sensore sonda wh31EP ecowitt)-METEOSHIELD PRO (sensore sonda wh32EP ecowitt)



# WS80 ecowitt- METEOSHIELD PRO (sensore sonda wh32EP ecowitt)

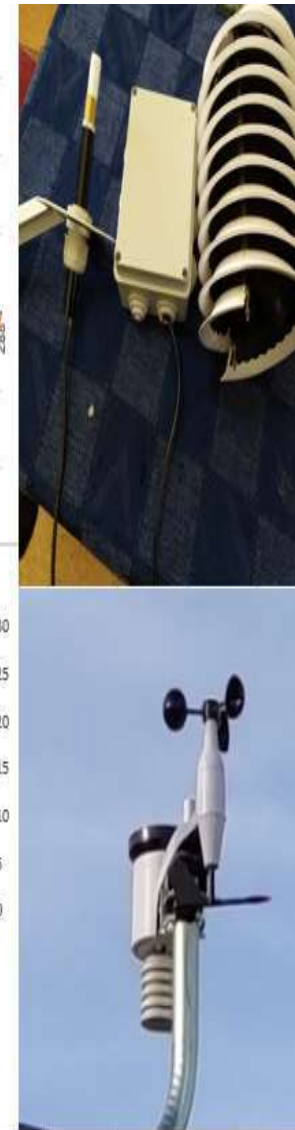
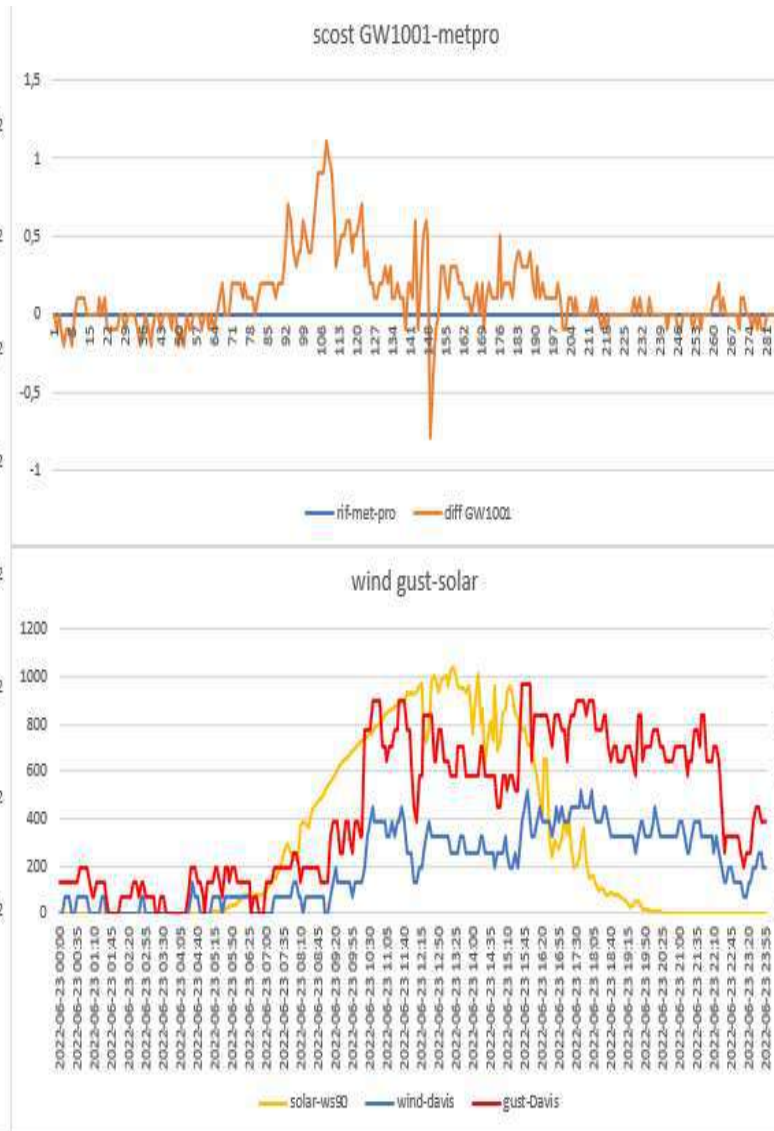
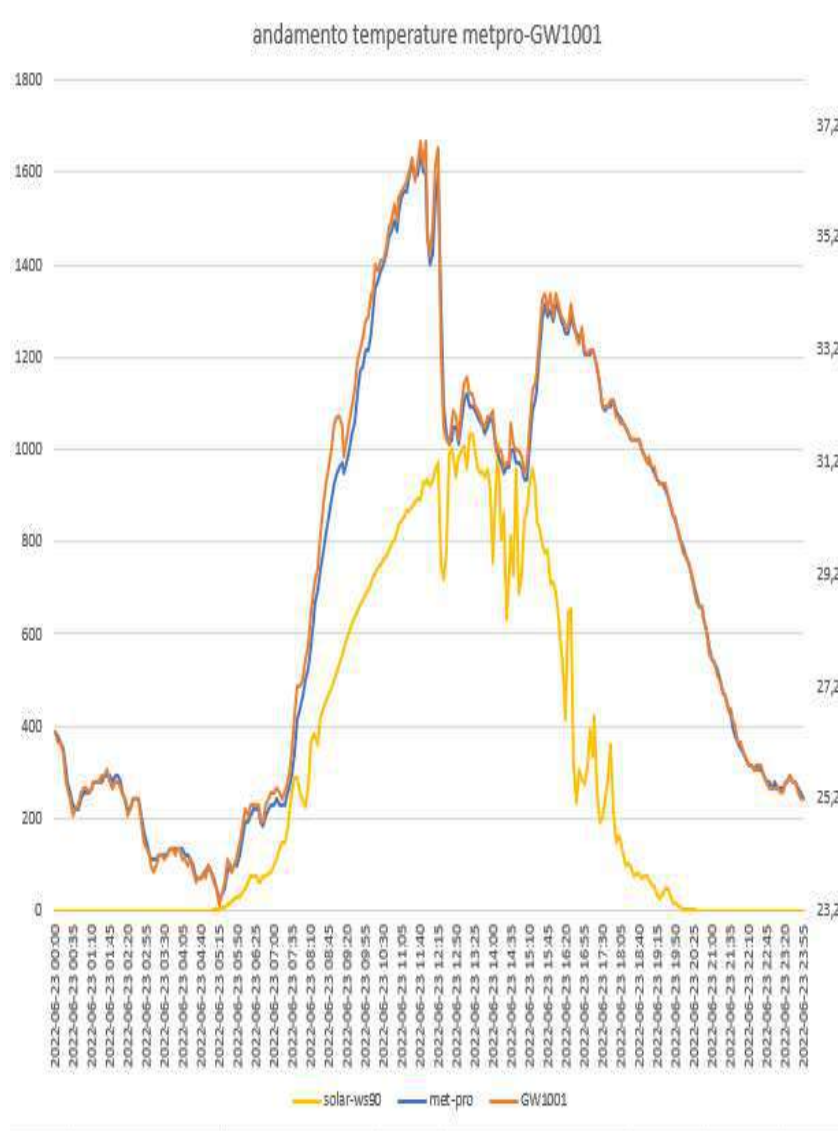


WITTBOY ecowit- METEOSHIELD PRO (sensore sonda wh32EP ecowitt)

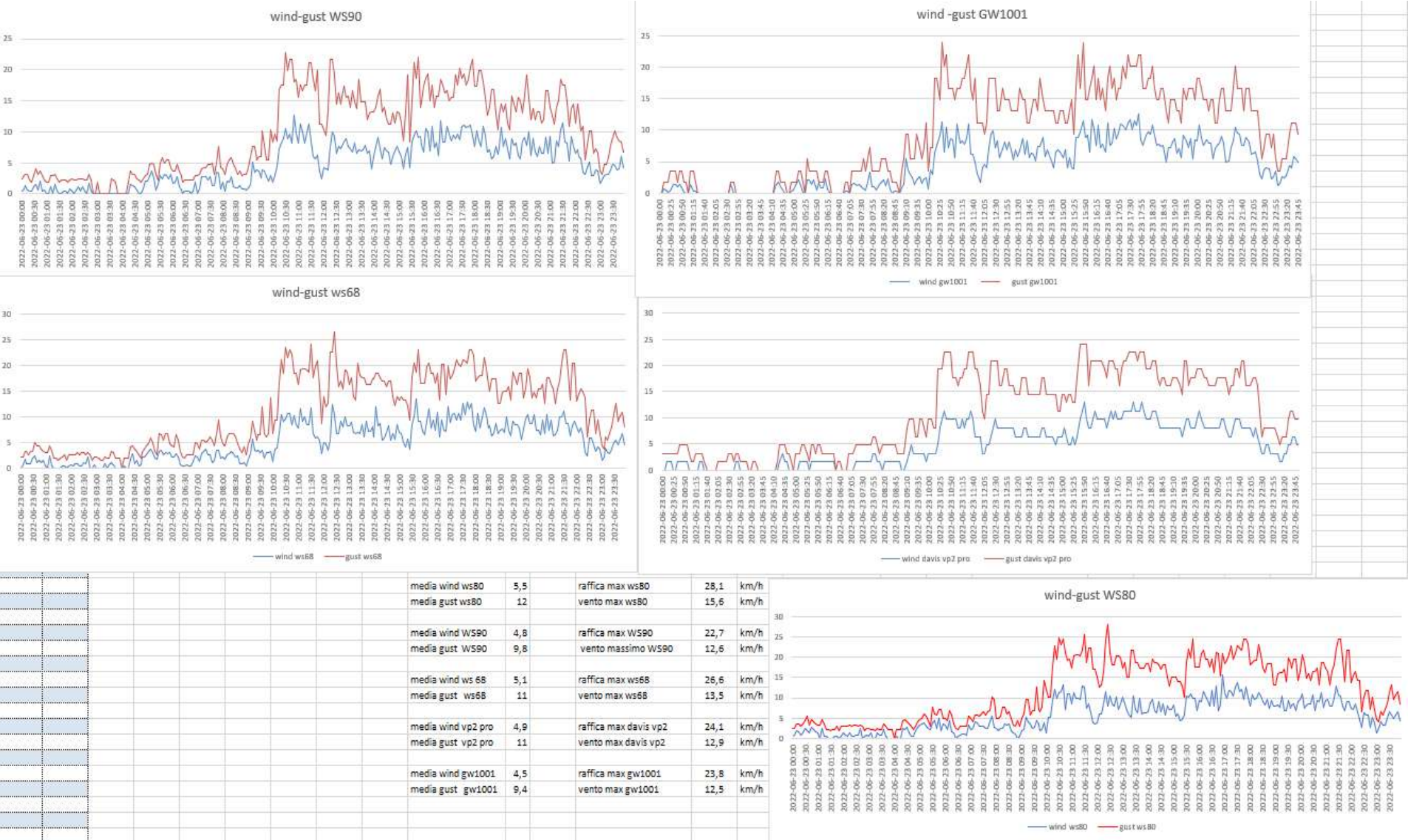




# GW1001 ecowitt-METEOSHIELD PRO (sensore sonda wh32EP ecowitt)



CONFRONTO A NEMOMETRI





DATI STATISTICI (MEDIE MASSIME MINIME )

vento medio 24H	4,925	km/h	vento medio ore di sole	5,252991								
media met pro	28,95833333											
max met pro	36,7											
min met pro	23,4											
media GW1001	29,07152778		scost medio GW1001	0,114336								
max GW1001	36,9		scost max GW1001	1,1								
minima GW1001	23,3		scost min GW1001	-0,8								
media davis vp2 pro	28,90520833		scost medio davis vp2 pro	0,094056								
max davis vp2pro	36,7		scost max davis vp2 pro	1,9								
min davis vp2 pro	23,3		scost min davis vp2 pro	-1,1								
media rad-14	28,97743056		scost medio rad-14	-0,05105								
max rad-14	36,5		scost max rad-14	0,4								
min rad-14	23,4		scost min rad-14	-0,2								
media rad-02	28,90729167		scost medio rad-02	-0,05104								
max rad-02	36,6		scost max rad-02	0,4								
min rad-02	23,4		scost min rad-02	-0,2								
media lastem	29,15486111		scost medio lastem	0,197552		media WS80	29,08888889		scost medio WS80	0,13056		
max lastem	37		scost max lastem	0,8		max WS80	37		scost max WS80	1,3		
min lastem	23,4		scost min lastem	-0,1		min WS80	23,3		scost min WS80	-1,5		
media davis 7714	28,90520833		scost medio davis 7714	-0,05313		media ws90	29,10069444		scost medio ws90	0,14236		
max davis 7714	36,7		scost max davis 7714	0,2		max ws90	37,1		scost max ws90	1,2		
min davis 7714	23,3		scost min davis 7714	-0,3		min ws90	23,3		scost min ws90	-0,6		

# METEOSHIELD PRO (sensore sonda wh32EP ecowitt) Tetto- METEOSHIELD PRO (sensore sonda wh32EP ecowitt) Suolo

