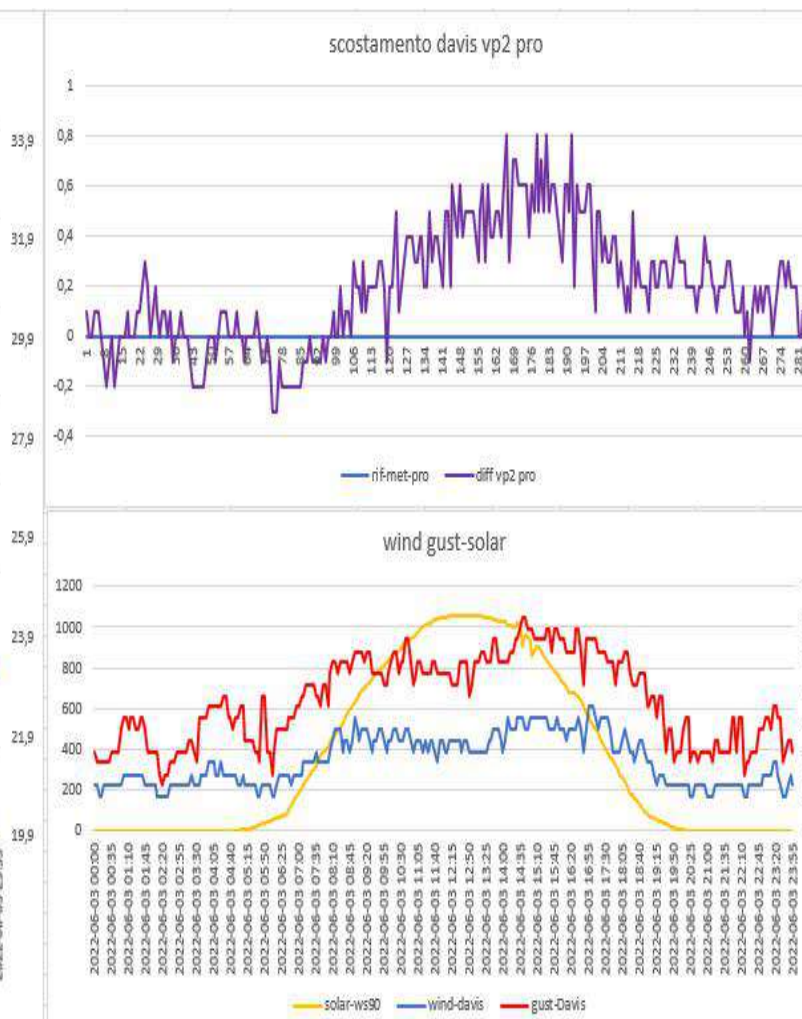
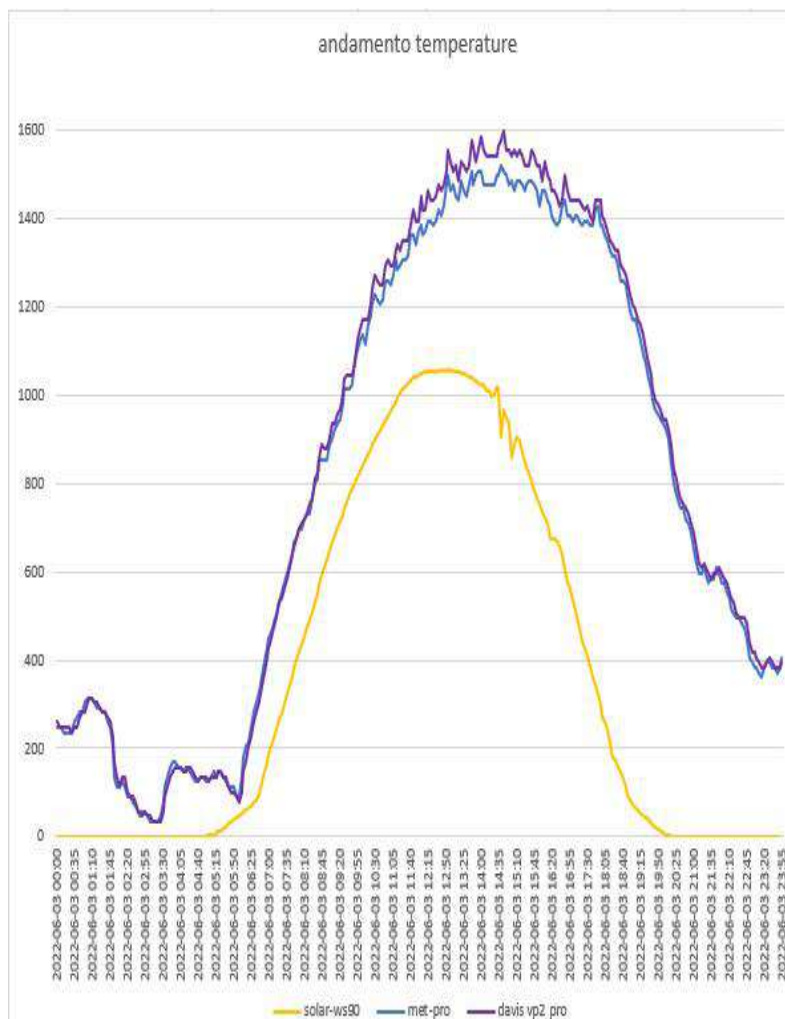
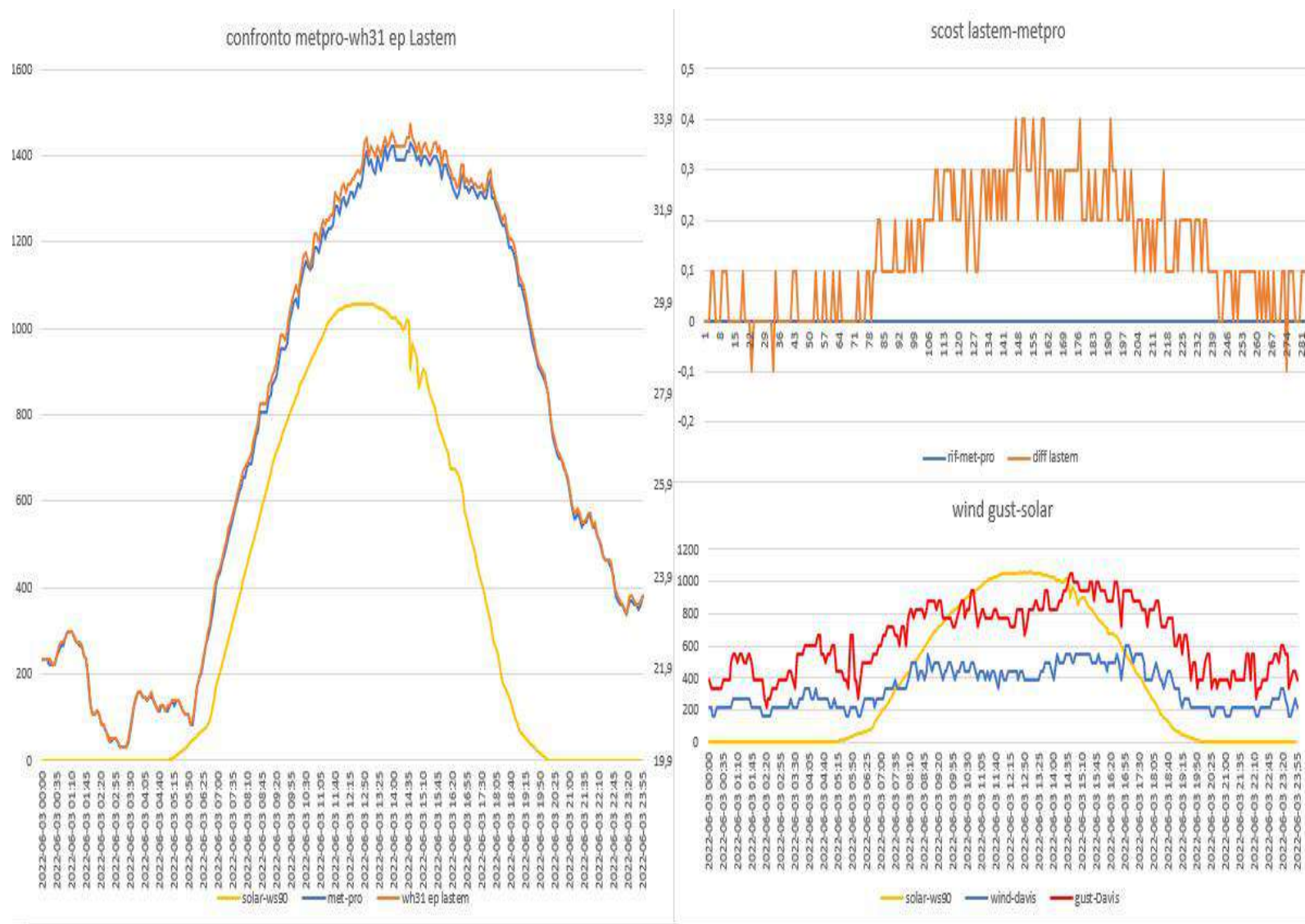


## ANDAMENTO SCHERMI DEL 03-06-2022

Davis vp2 pro- METEOSHIELD PRO (sensore sonda wh32EP ecowitt)

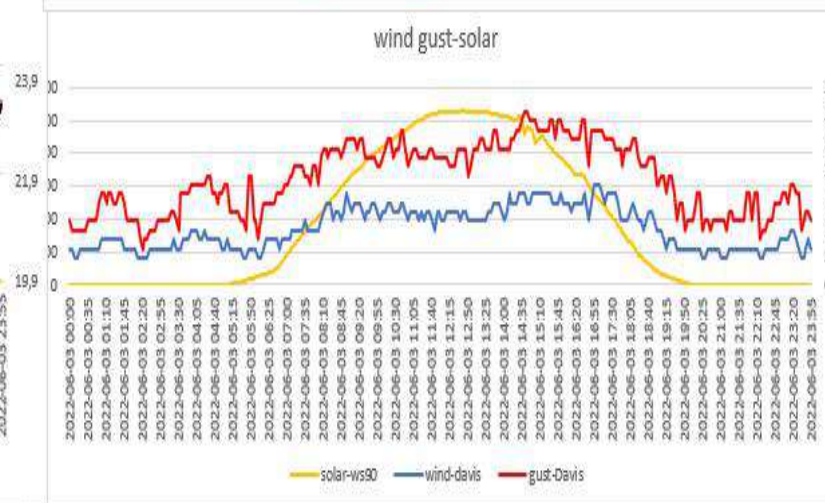
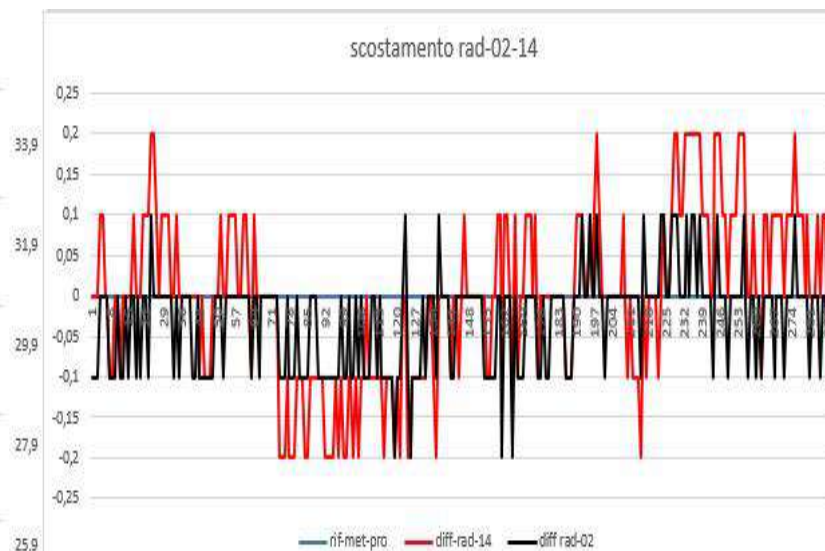
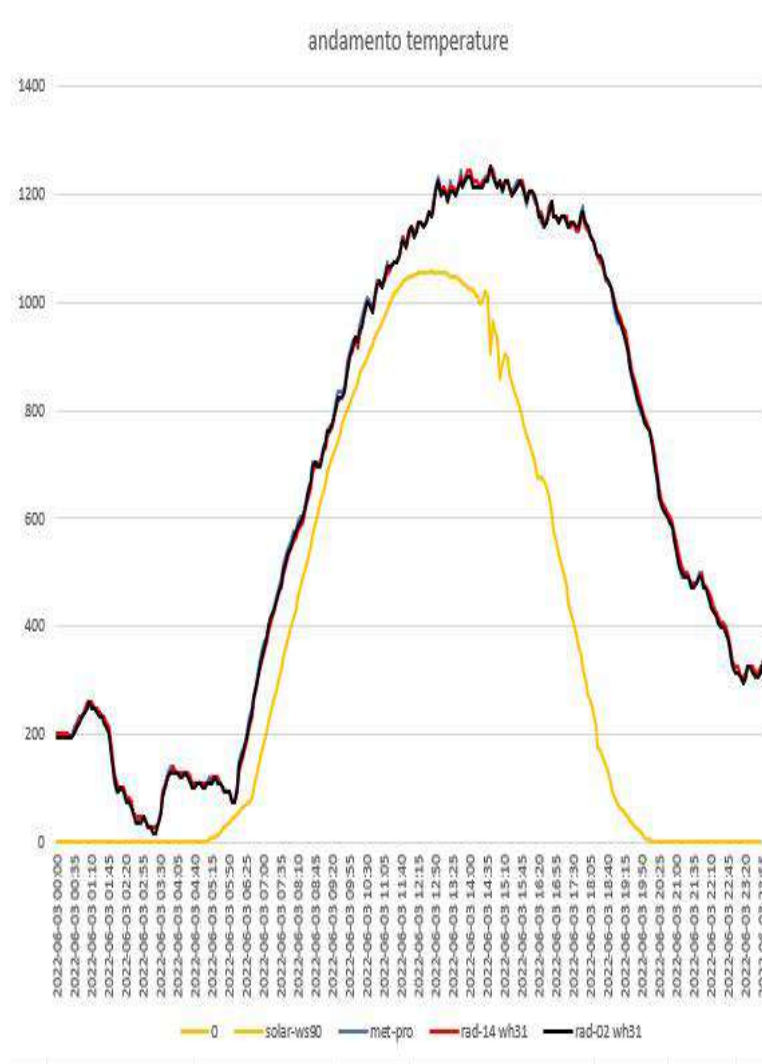


Lsi IASTEM(sensore sonda wh31EP ecowitt) - METEOSHIELD PRO (sensore sonda wh32EP ecowitt)

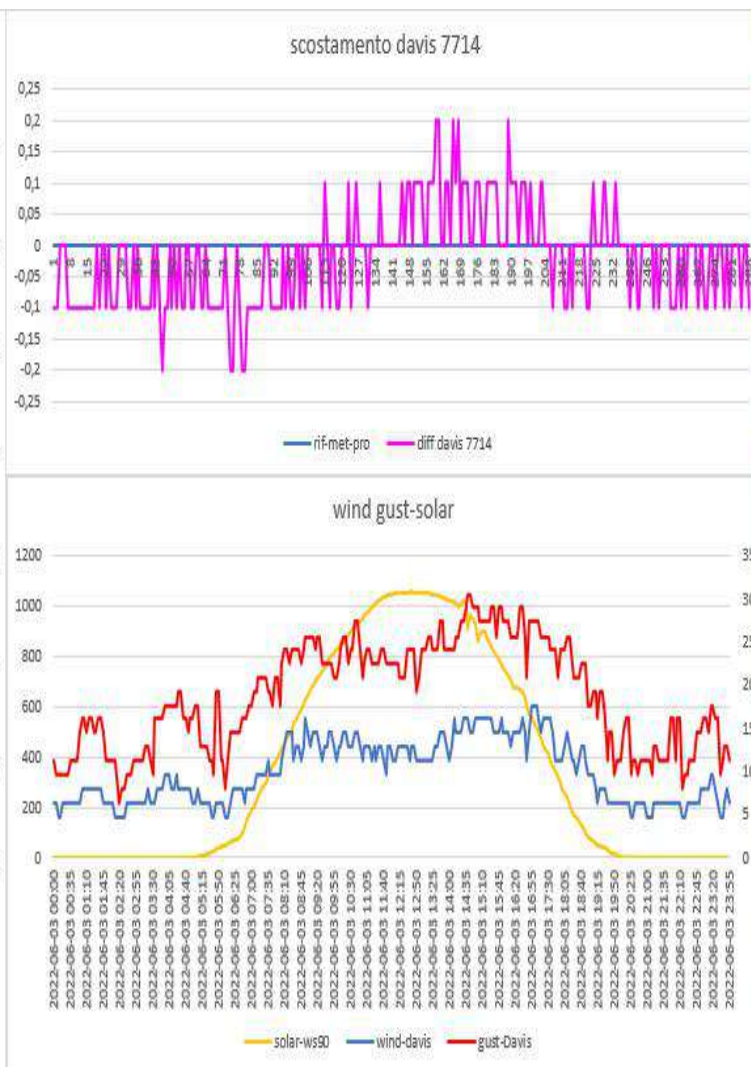
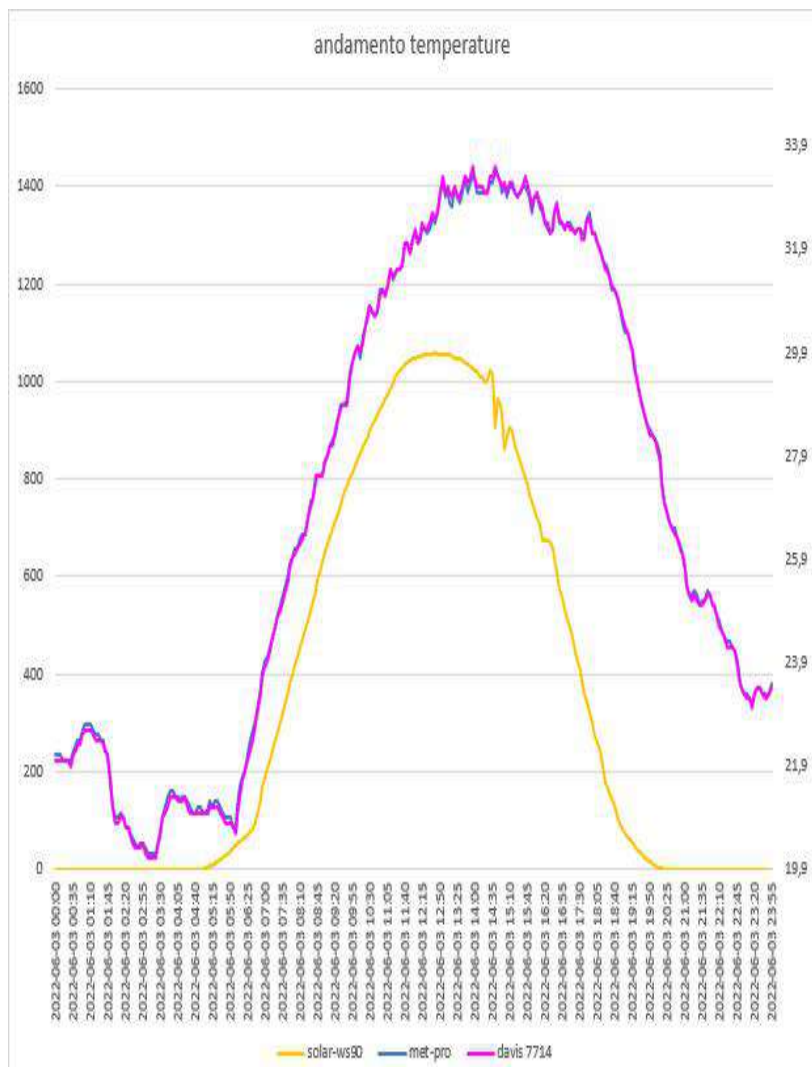




RAD-02-14(sensore sonda WH31EP ecowitt) – METEOSHIELD PRO (sensore sonda wh32EP ecowitt)

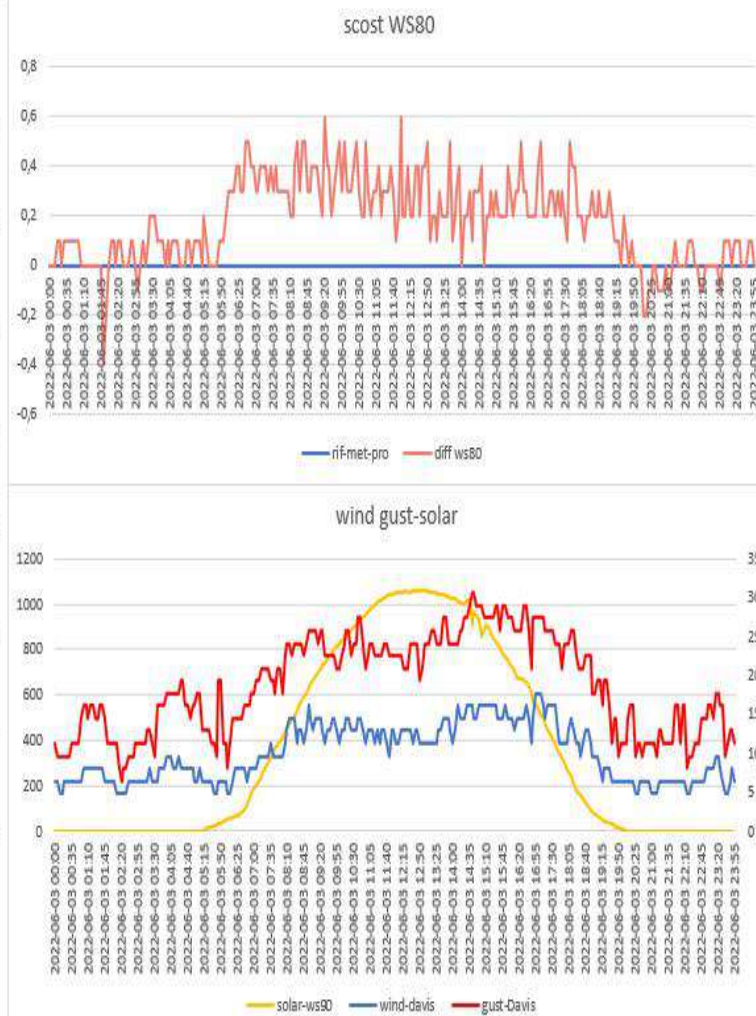
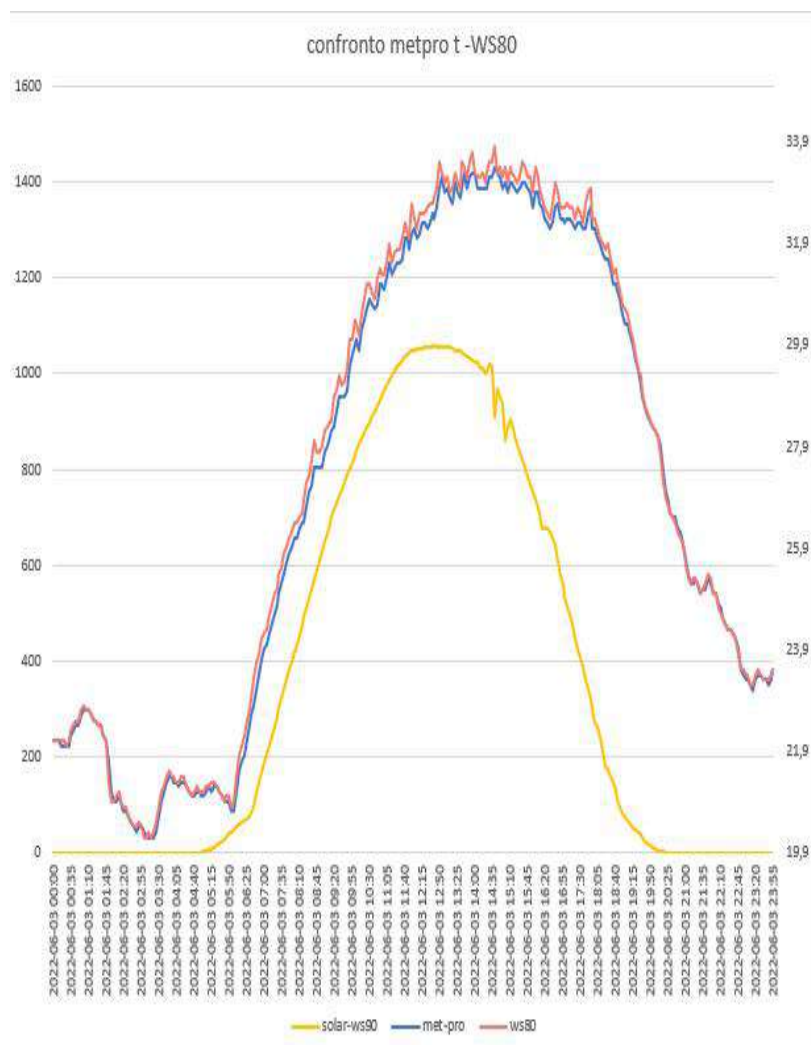


DAVIS 7714(sensore sonda wh31EP ecowit)-METEOSHIELD PRO (sensore sonda wh32EP ecowitt)

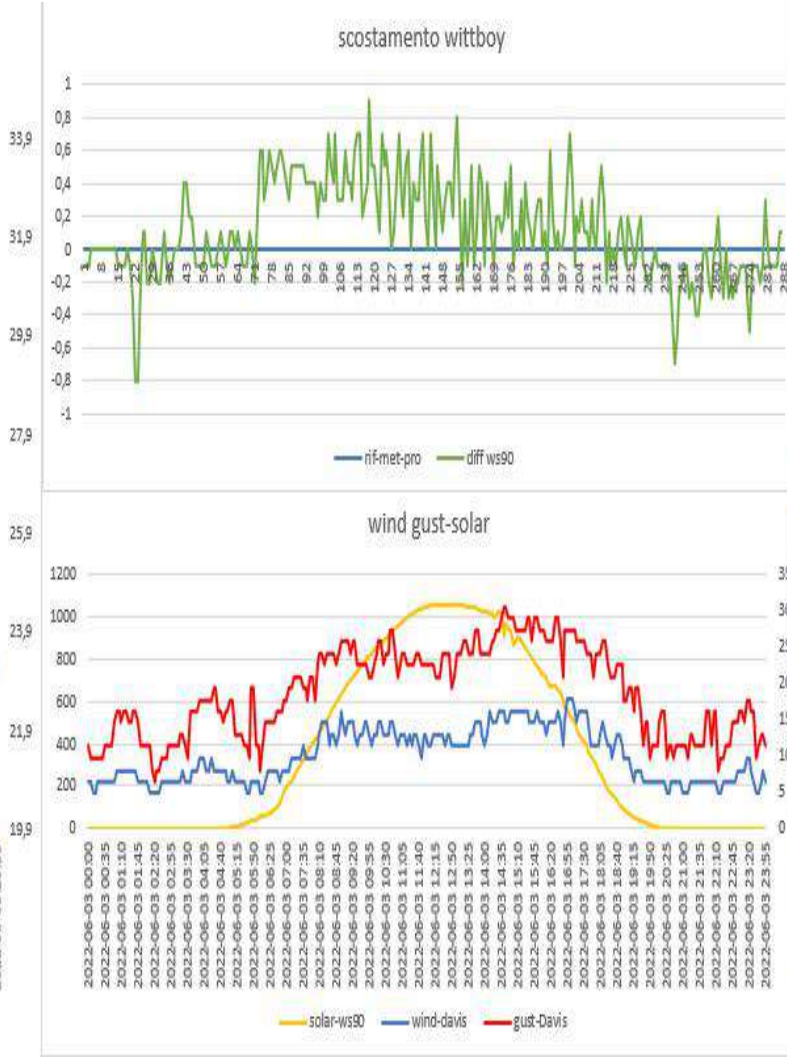
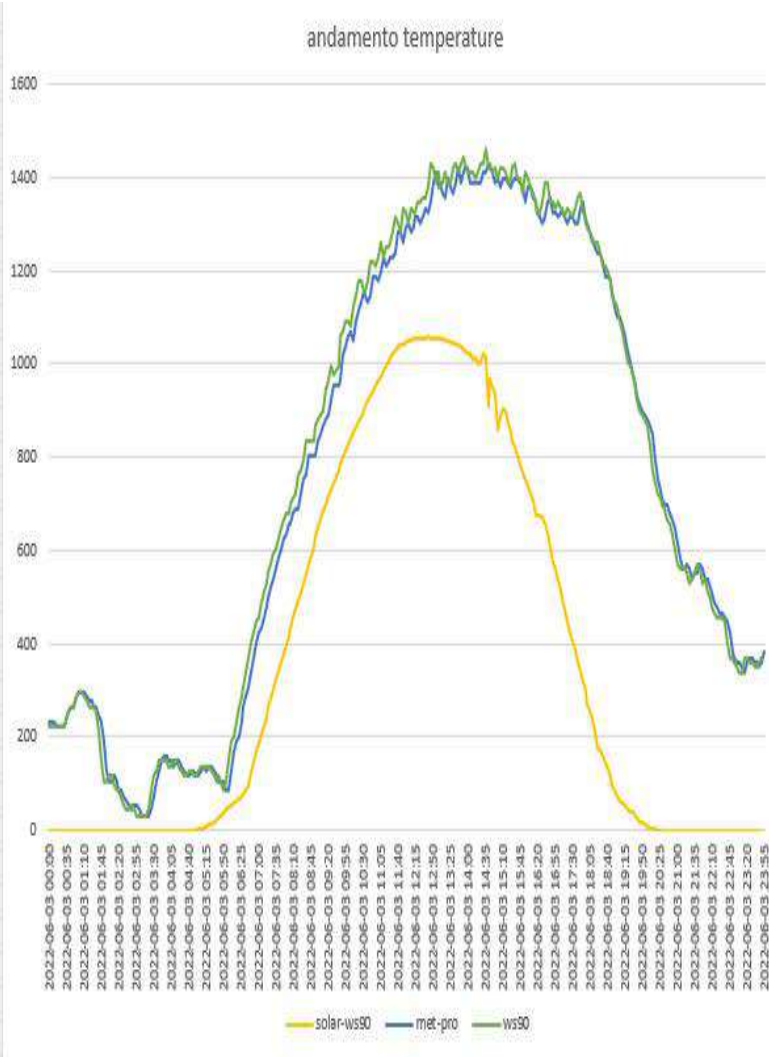




# WS80 ecowitt- METEOSHIELD PRO (sensore sonda wh32EP ecowitt)

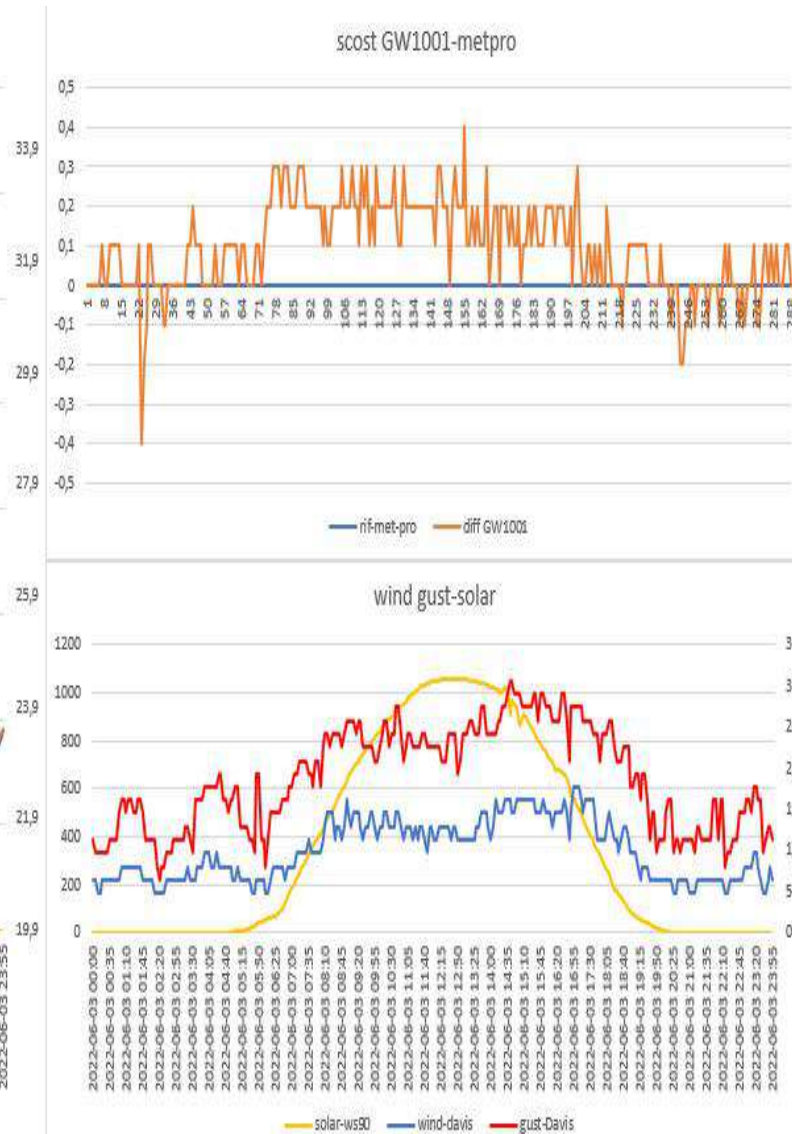
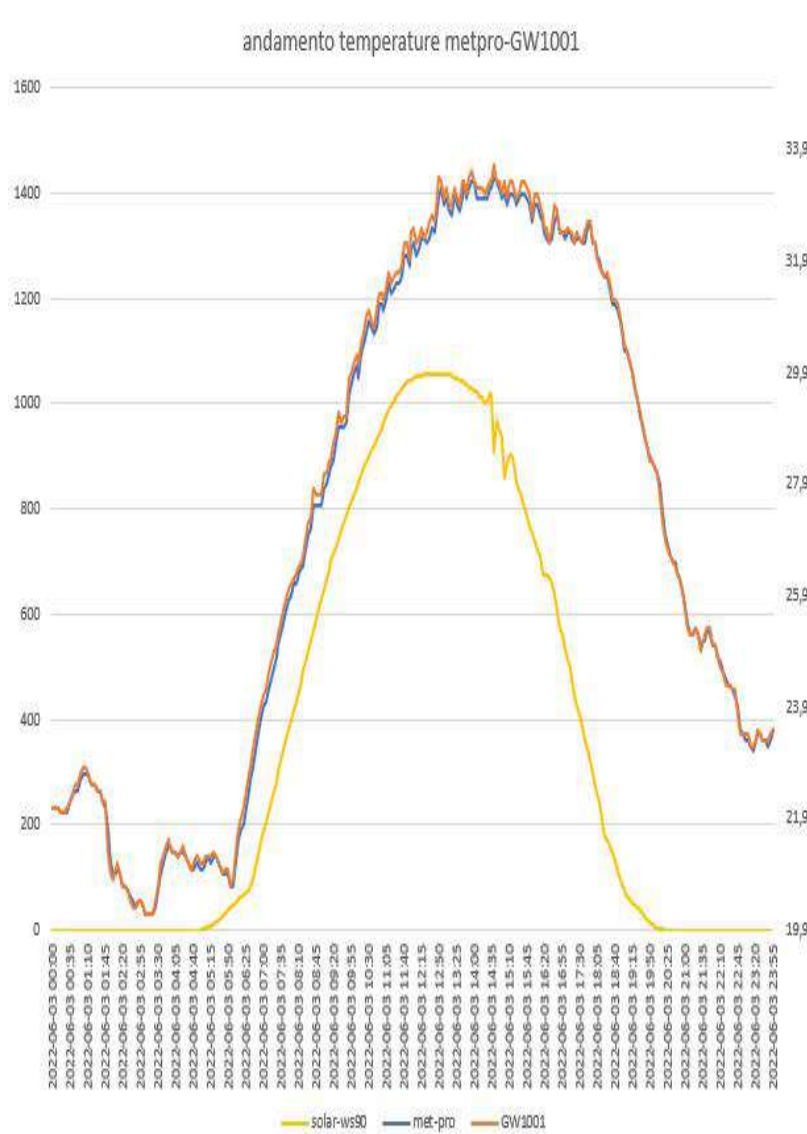


WITTBOY ecowit- METEOSHIELD PRO (sensore sonda wh32EP ecowitt)

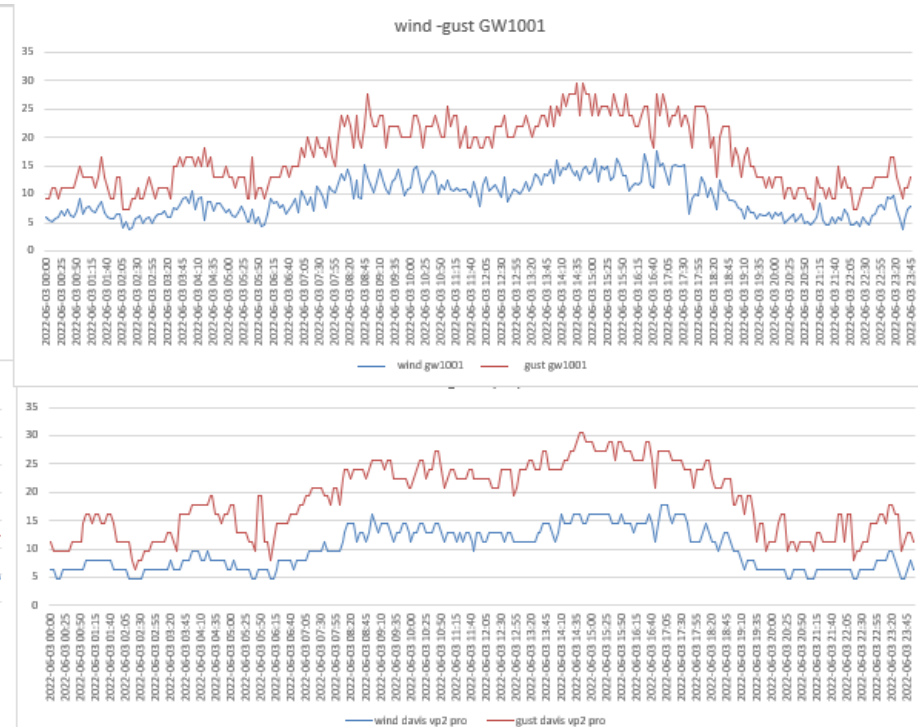
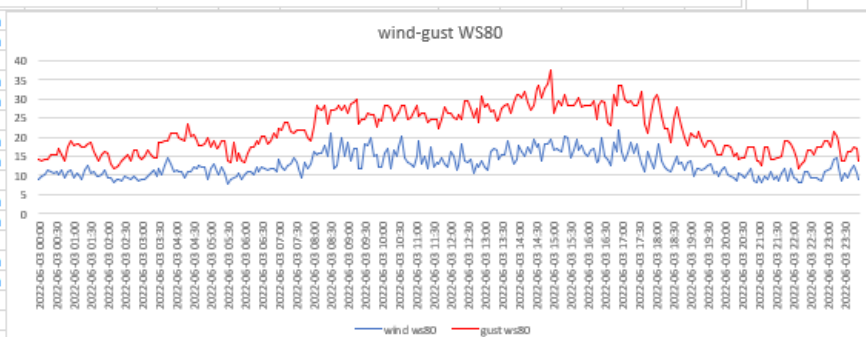




# GW1001 ecowitt-METEOSHIELD PRO (sensore sonda wh32EP ecowitt)



## CONFRONTO ANEMOMETRI

[illegible]



DATI STATISTICI (MEDIE MASSIME MINIME )

vento medio 24H	9,96875	km/h	vento medio ore di sole	12,70171								
media met pro	27,06354167											
max met pro	33,4											
min met pro	20,2											
media GW1001	27,15763889		scost medio GW1001	0,094406								
max GW1001	33,6		scost max GW1001	0,4								
minima GW1001	20,2		scost min GW1001	-0,4								
media davis vp2 pro	27,04409722		scost medio davis vp2 pro	0,194056								
max davis vp2pro	33,5		scost max davis vp2 pro	0,8								
min davis vp2 pro	20,1		scost min davis vp2 pro	-0,3								
media rad-14	27,0625		scost medio rad-14	-0,02937								
max rad-14	33,4		scost max rad-14	0,1								
min rad-14	20,2		scost min rad-14	-0,2								
media rad-02	27,03402778		scost medio rad-02	-0,02951								
max rad-02	33,4		scost max rad-02	0,1								
min rad-02	20,1		scost min rad-02	-0,2								
media lastem	27,20034722		scost medio lastem	0,137413		media WS80	27,23888889		scost medio WS80	0,17535		
max lastem	33,8		scost max lastem	0,4		max WS80	33,8		scost max WS80	0,6		
min lastem	20,2		scost min lastem	-0,1		min WS80	20,2		scost min WS80	-0,4		
media davis 7714	27,04409722		scost medio davis 7714	-0,01944		media ws90	27,19303136		scost medio ws90	0,11707		
max davis 7714	33,5		scost max davis 7714	0,2		max ws90	33,7		scost max ws90	0,9		
min davis 7714	20,1		scost min davis 7714	-0,2		min ws90	20,2		scost min ws90	-0,8		

