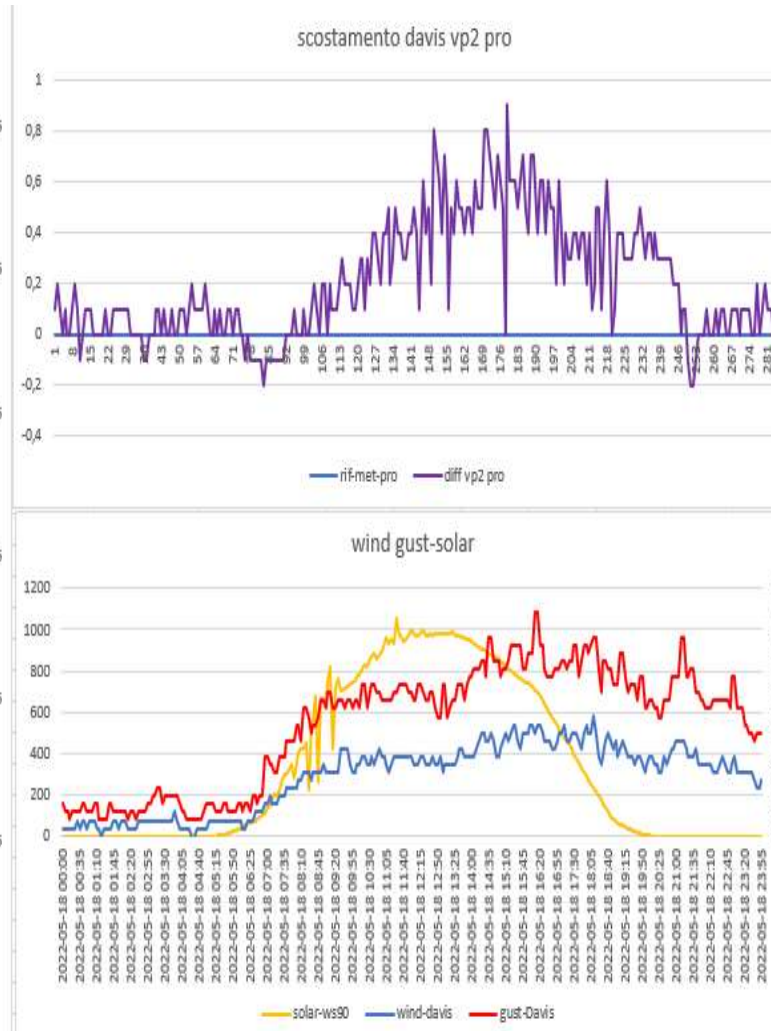
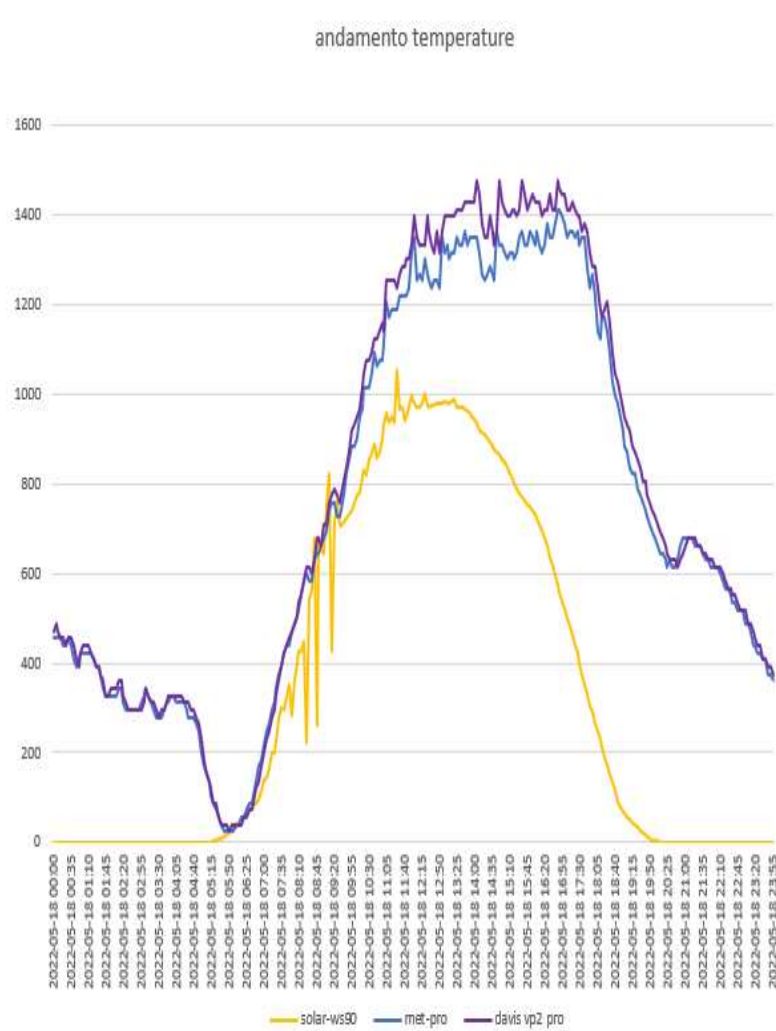
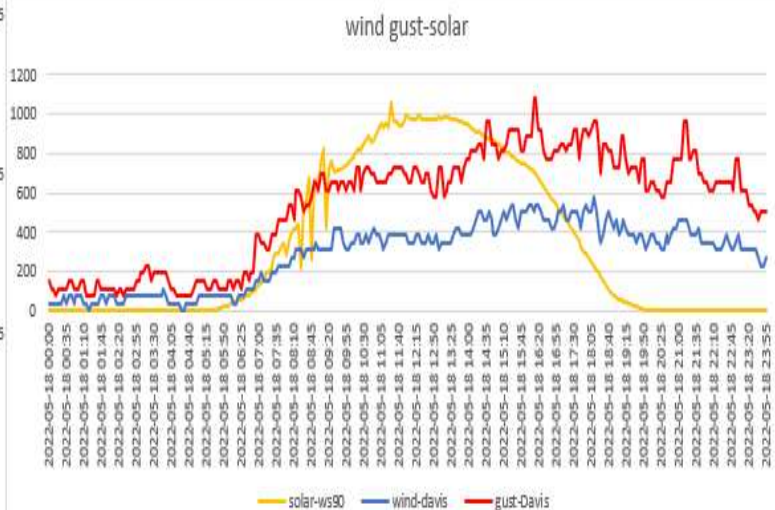
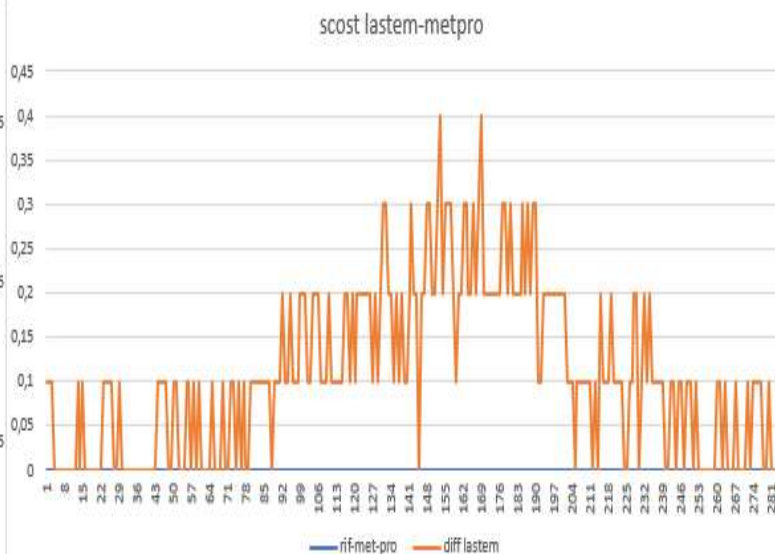
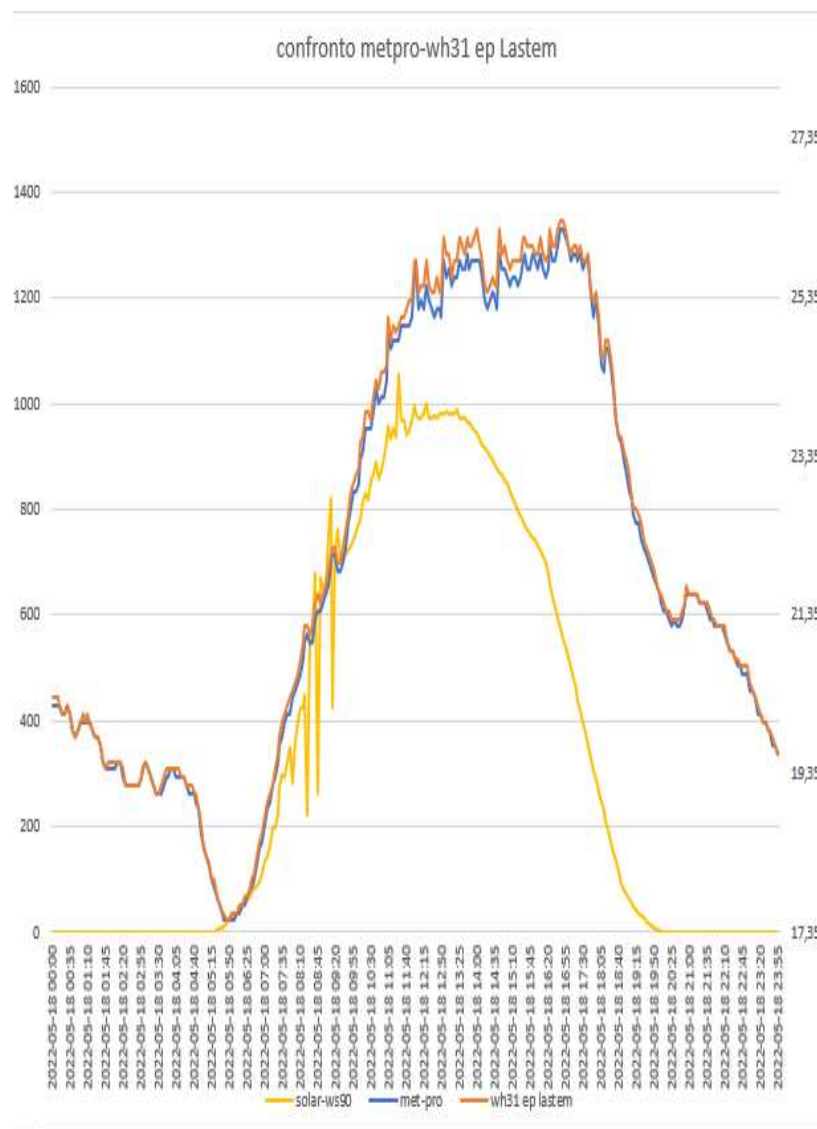


## ANDAMENTO SCHERMI DEL 18-05-2022

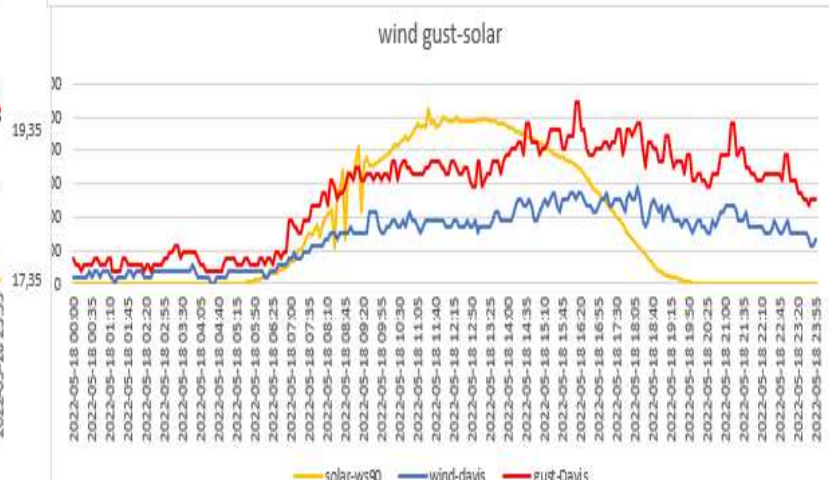
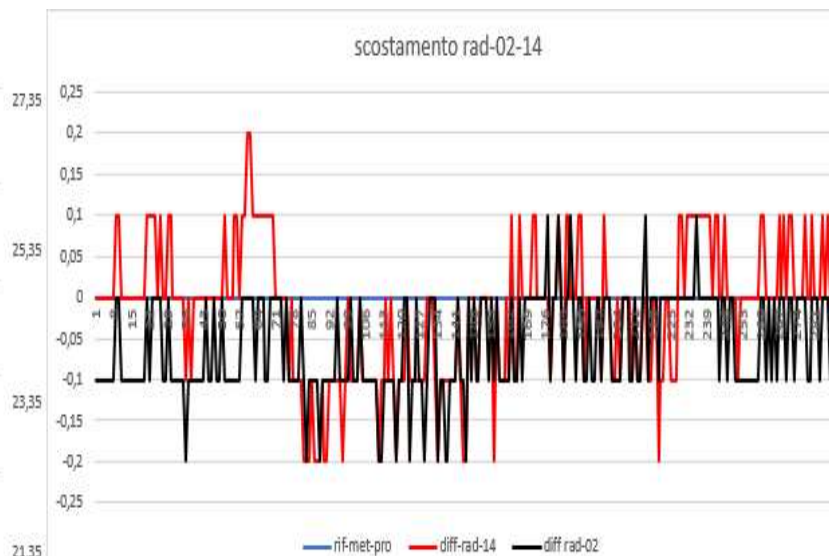
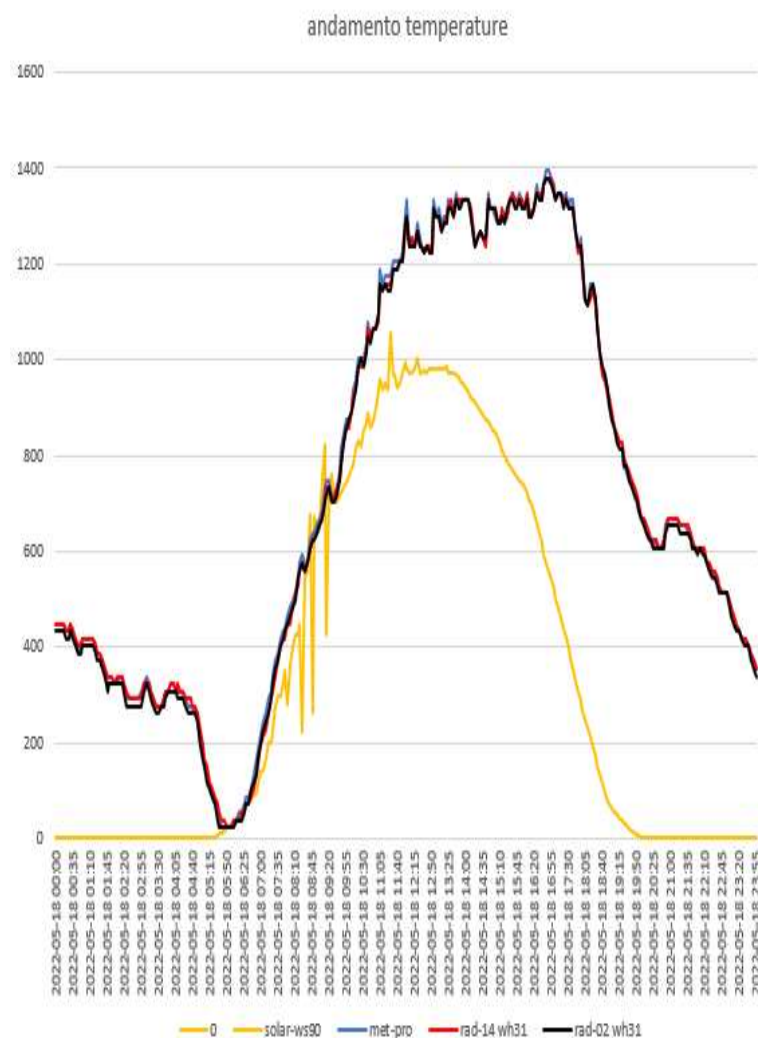
Davis vp2 pro- METEOSHIELD PRO (sensore sonda wh32EP ecowitt)



Lsi IASTEM(sensore sonda wh31EP ecowitt) - METEOSHIELD PRO (sensore sonda wh32EP ecowitt)

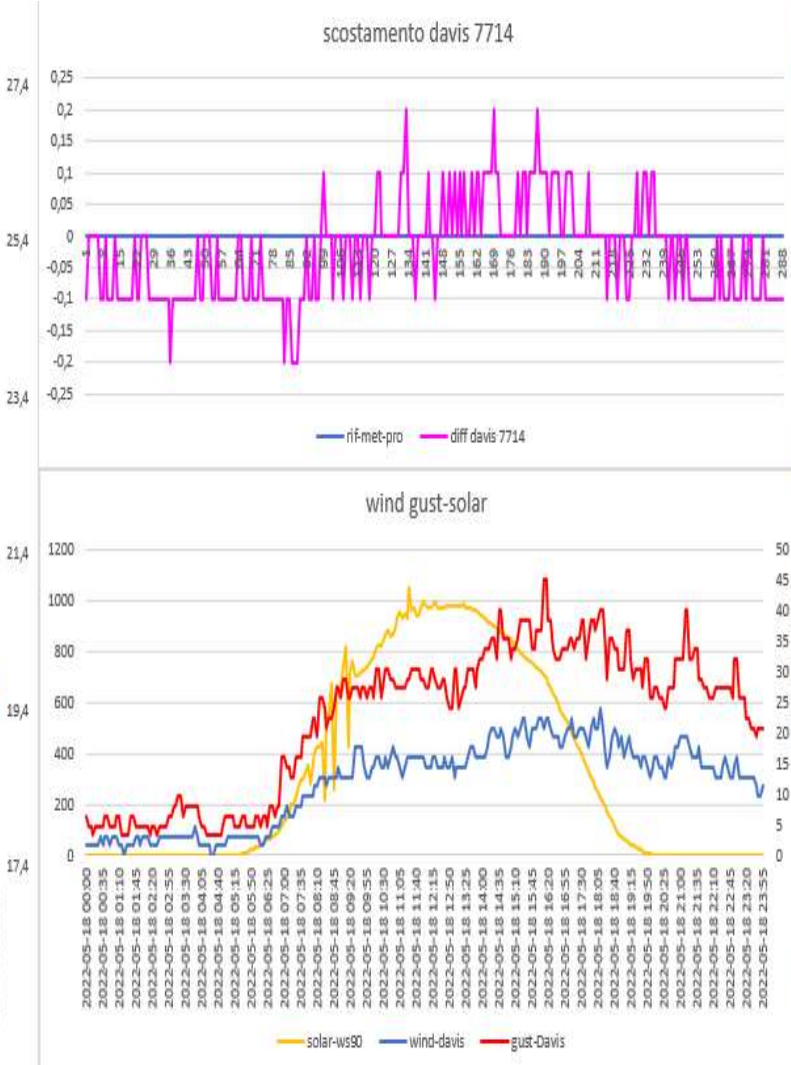
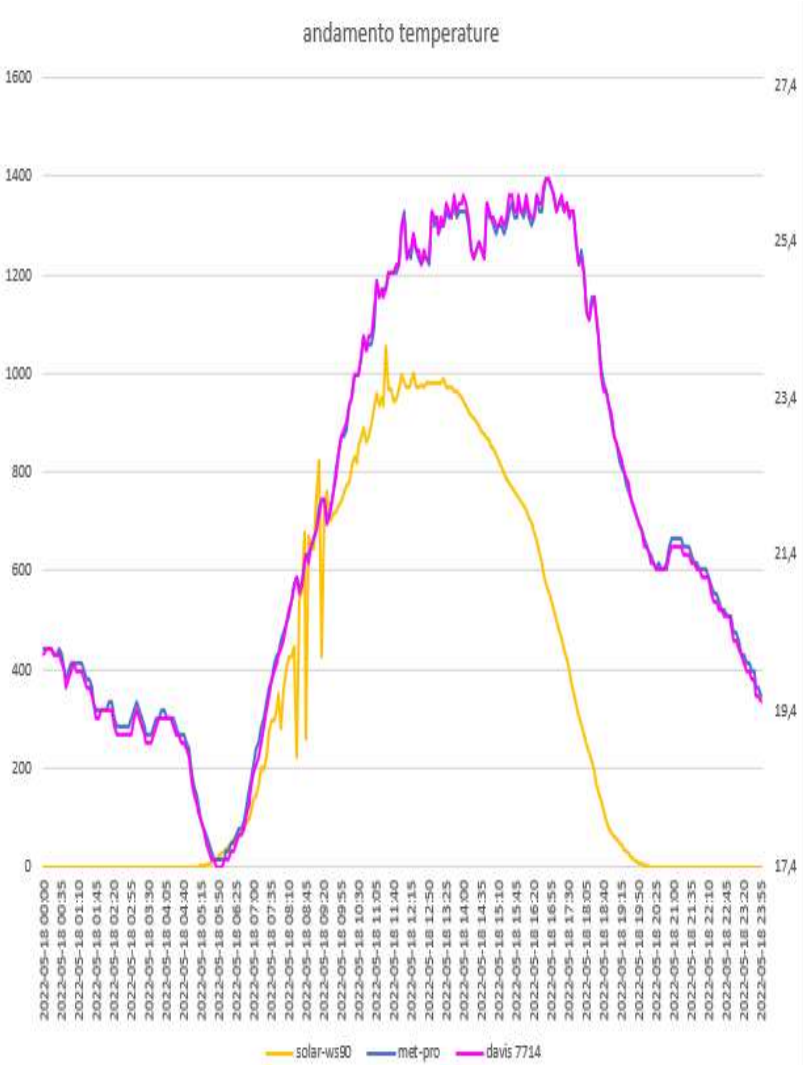


# RAD-02-14(sensore sonda WH31EP ecowitt) – METEOSHIELD PRO (sensore sonda wh32EP ecowitt)

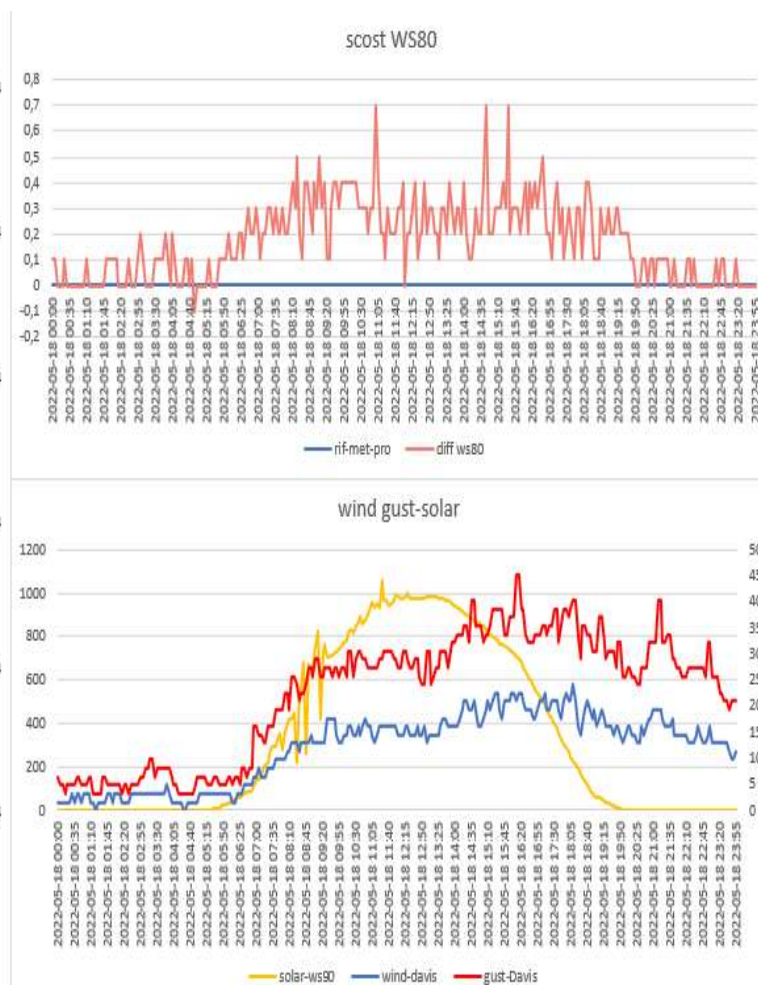
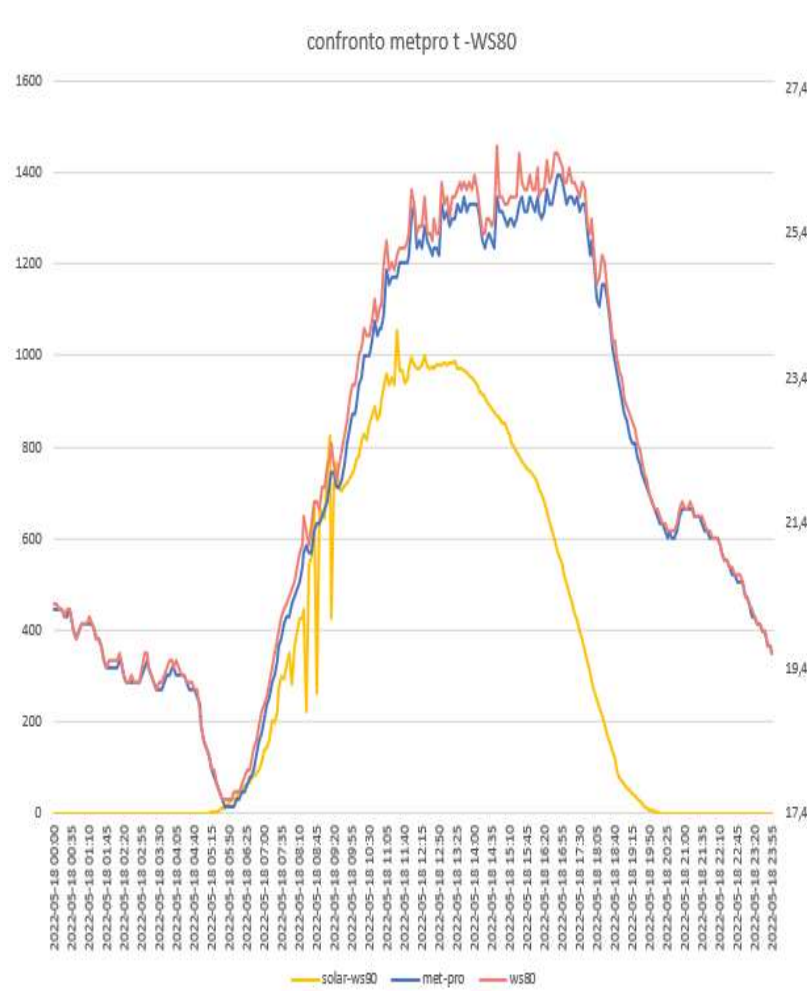




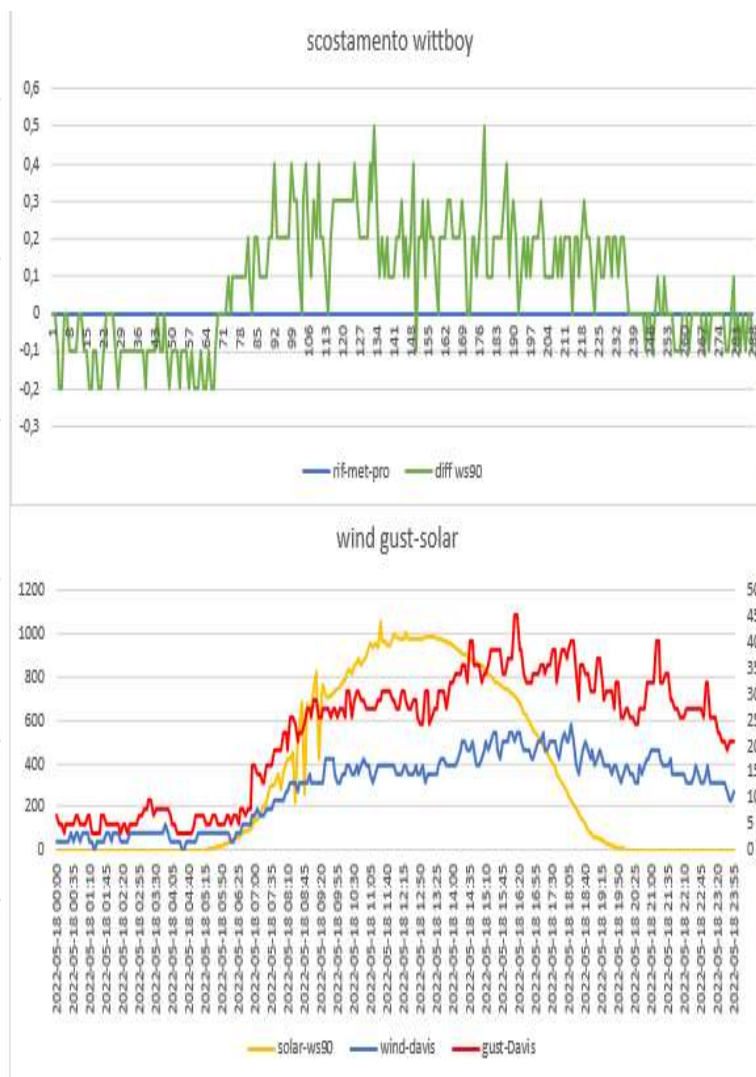
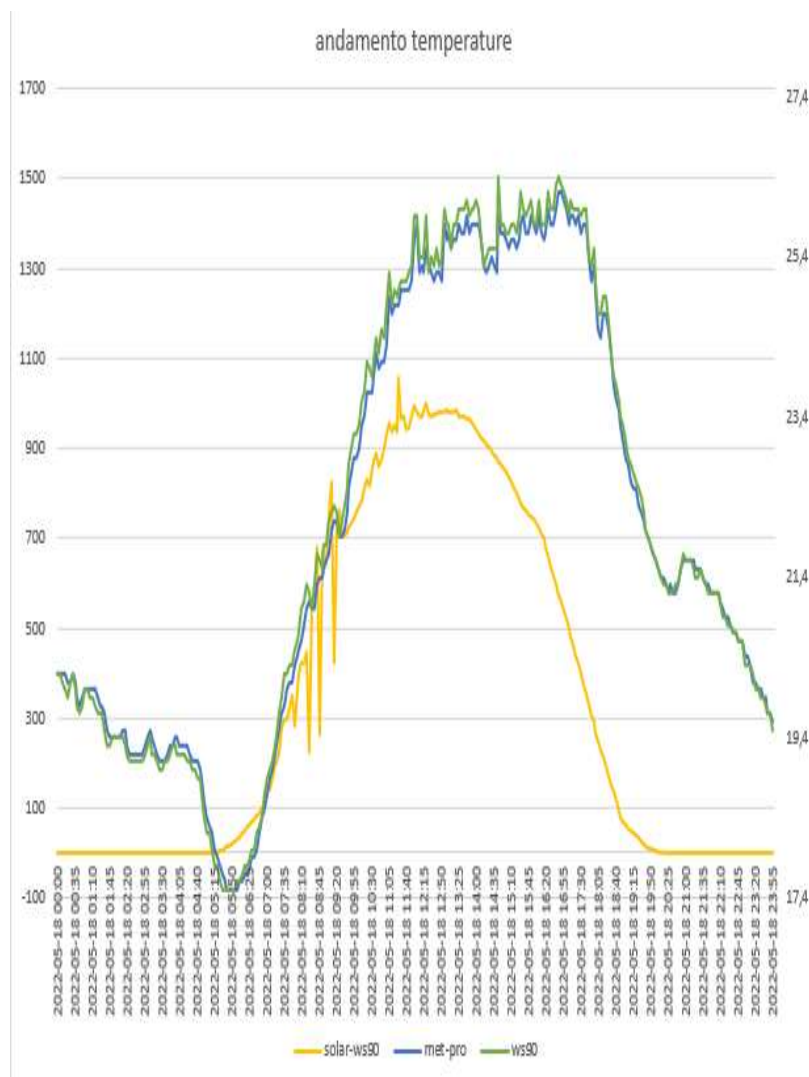
DAVIS 7714(sensore sonda wh31EP ecowit)-METEOSHIELD PRO (sensore sonda wh32EP ecowitt)



# WS80 ecowitt- METEOSHIELD PRO (sensore sonda wh32EP ecowitt)

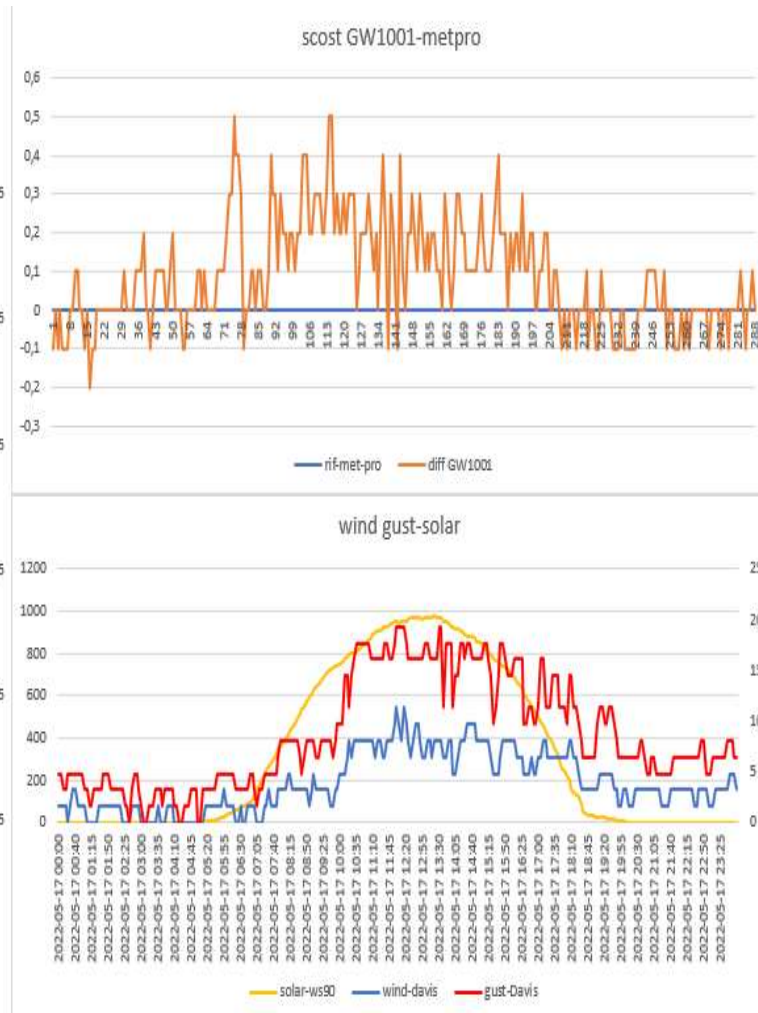
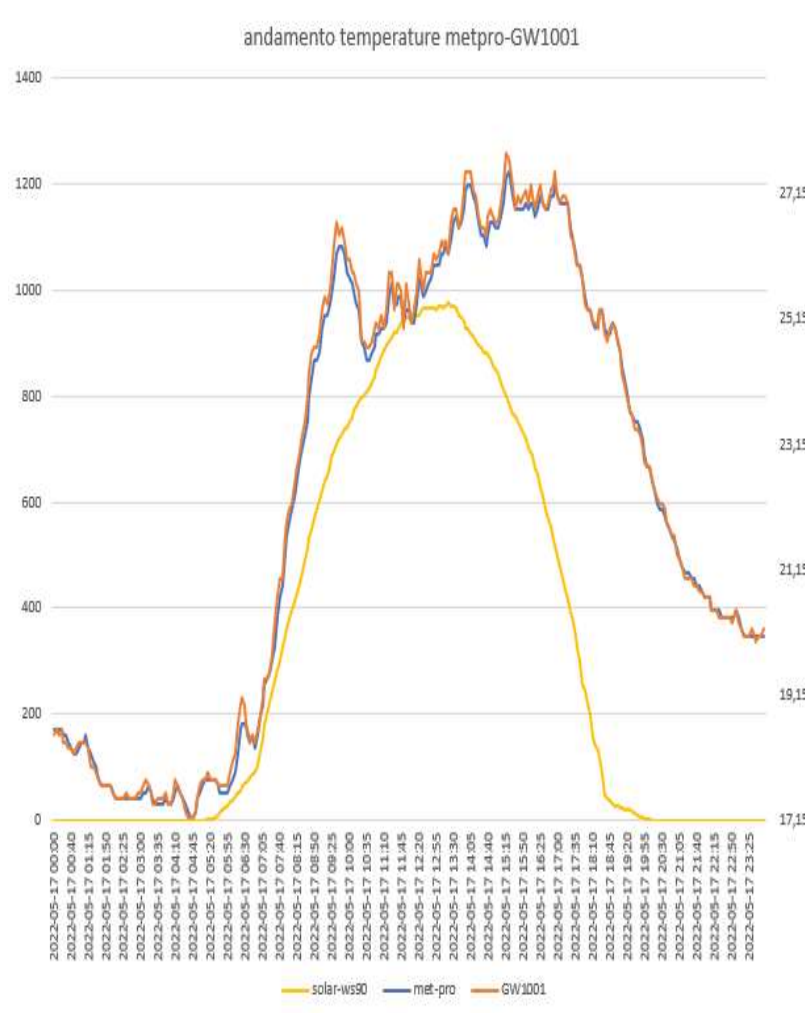


# WITTBOY ecowit- METEOSHIELD PRO (sensore sonda wh32EP ecowitt) (TEST)

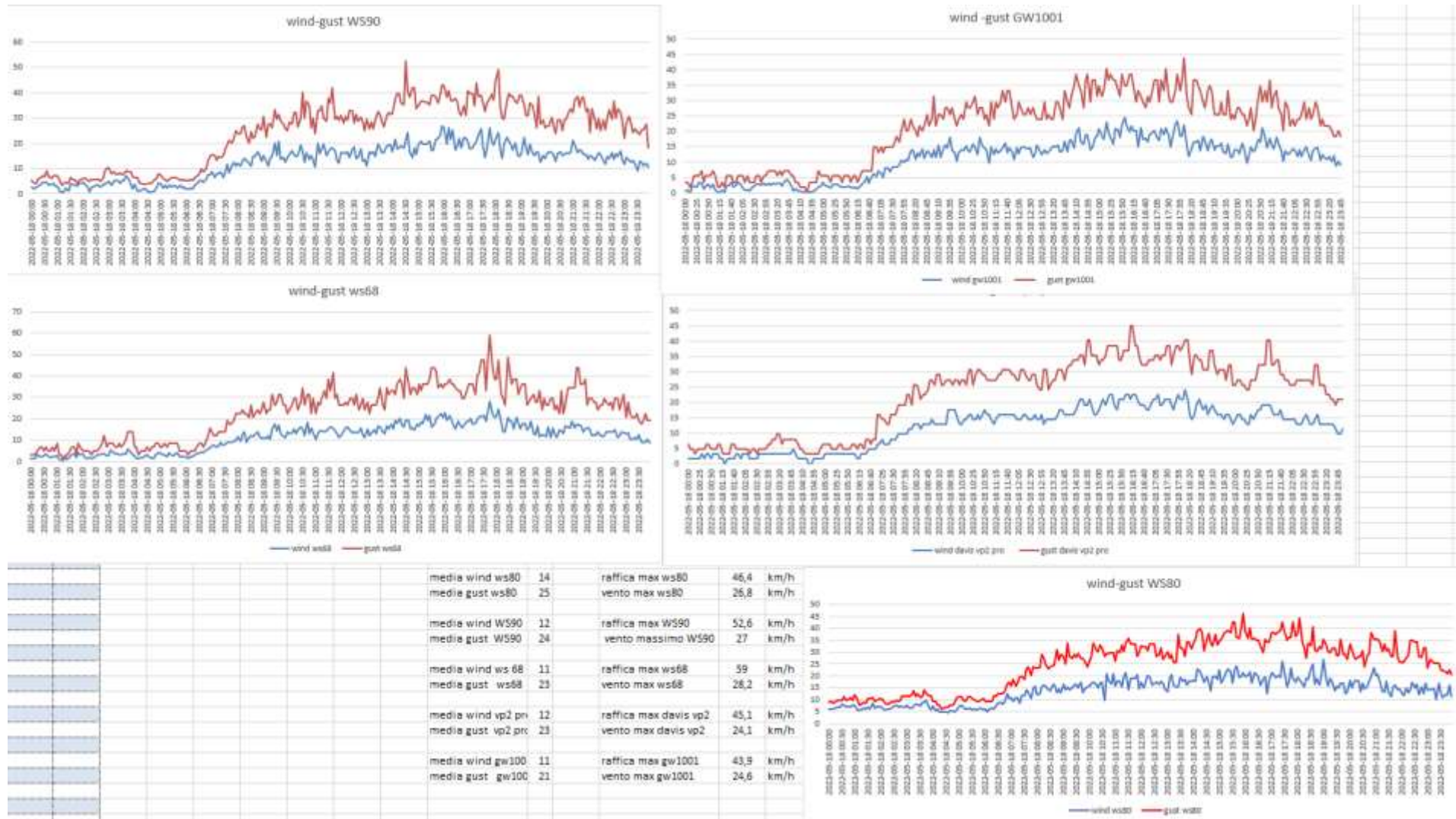




# GW1001 ecowitt-METEOSHIELD PRO (sensore sonda wh32EP ecowitt)



## CONFRONTO ANEMOMETRI





DATI STATISTICI (MEDIE MASSIME MINIME )

|                     |             |      |                           |          |  |            |             |  |                  |         |  |  |
|---------------------|-------------|------|---------------------------|----------|--|------------|-------------|--|------------------|---------|--|--|
| vento medio 24H     | 12,0125     | km/h | vento medio ore di sole   | 14,66581 |  |            |             |  |                  |         |  |  |
| media met pro       | 22,01666667 |      |                           |          |  |            |             |  |                  |         |  |  |
| max met pro         | 26,2        |      |                           |          |  |            |             |  |                  |         |  |  |
| min met pro         | 17,5        |      |                           |          |  |            |             |  |                  |         |  |  |
| media GW1001        | 22,07986111 |      | scost medio GW1001        | 0,063636 |  |            |             |  |                  |         |  |  |
| max GW1001          | 26,2        |      | scost max GW1001          | 0,3      |  |            |             |  |                  |         |  |  |
| minima GW1001       | 17,5        |      | scost min GW1001          | -0,1     |  |            |             |  |                  |         |  |  |
| media davis vp2 pro | 21,98993056 |      | scost medio davis vp2 pro | 0,207692 |  |            |             |  |                  |         |  |  |
| max davis vp2pro    | 26,2        |      | scost max davis vp2 pro   | 0,9      |  |            |             |  |                  |         |  |  |
| min davis vp2 pro   | 17,4        |      | scost min davis vp2 pro   | -0,2     |  |            |             |  |                  |         |  |  |
| media rad-14        | 22,00138889 |      | scost medio rad-14        | -0,05839 |  |            |             |  |                  |         |  |  |
| max rad-14          | 26,1        |      | scost max rad-14          | 0,1      |  |            |             |  |                  |         |  |  |
| min rad-14          | 17,5        |      | scost min rad-14          | -0,2     |  |            |             |  |                  |         |  |  |
| media rad-02        | 21,95798611 |      | scost medio rad-02        | -0,05868 |  |            |             |  |                  |         |  |  |
| max rad-02          | 26,1        |      | scost max rad-02          | 0,1      |  |            |             |  |                  |         |  |  |
| min rad-02          | 17,5        |      | scost min rad-02          | -0,2     |  |            |             |  |                  |         |  |  |
| media lastem        | 22,12430556 |      | scost medio lastem        | 0,108392 |  | media WS80 | 22,18680556 |  | scost medio WS80 | 0,17014 |  |  |
| max lastem          | 26,3        |      | scost max lastem          | 0,4      |  | max WS80   | 26,6        |  | scost max WS80   | 0,7     |  |  |
| min lastem          | 17,5        |      | scost min lastem          | 0        |  | min WS80   | 17,6        |  | scost min WS80   | -0,1    |  |  |
| media davis 7714    | 21,98993056 |      | scost medio davis 7714    | -0,02674 |  | media ws90 | 22,09409722 |  | scost medio ws90 | 0,07743 |  |  |
| max davis 7714      | 26,2        |      | scost max davis 7714      | 0,2      |  | max ws90   | 26,4        |  | scost max ws90   | 0,5     |  |  |
| min davis 7714      | 17,4        |      | scost min davis 7714      | -0,2     |  | min ws90   | 17,5        |  | scost min ws90   | -0,2    |  |  |

