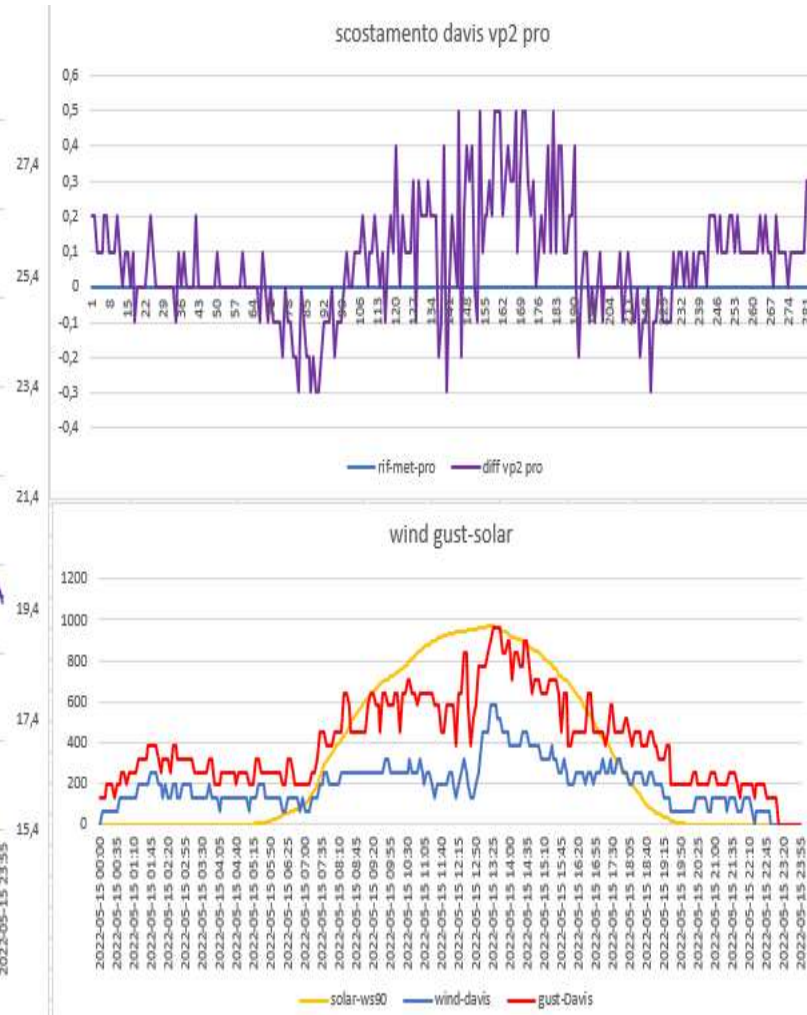
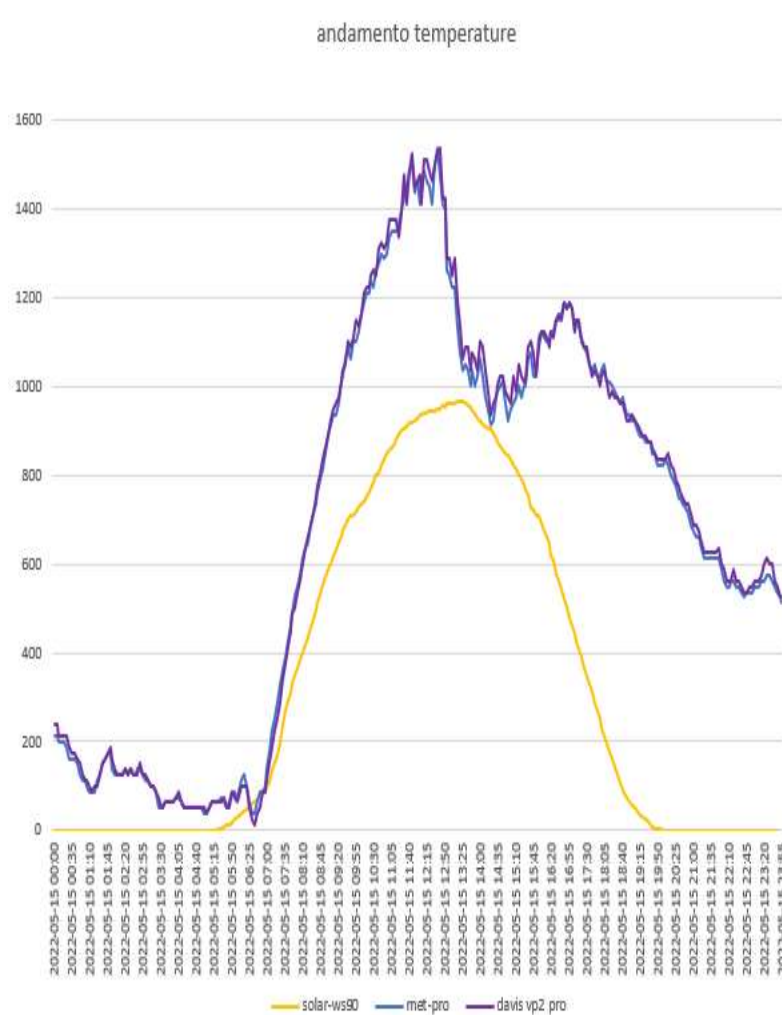
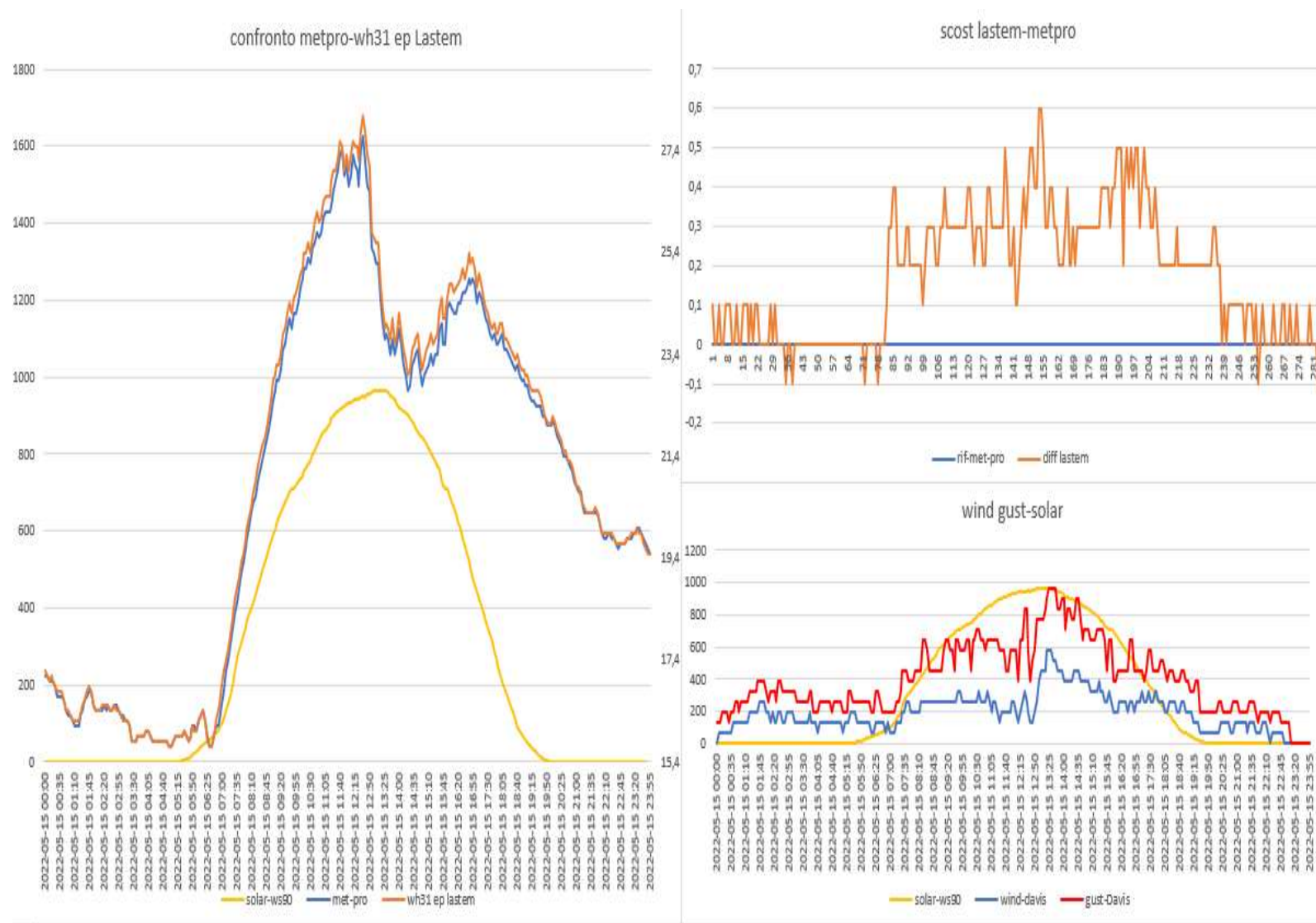


ANDAMENTO SCHERMI DEL 15-05-2022

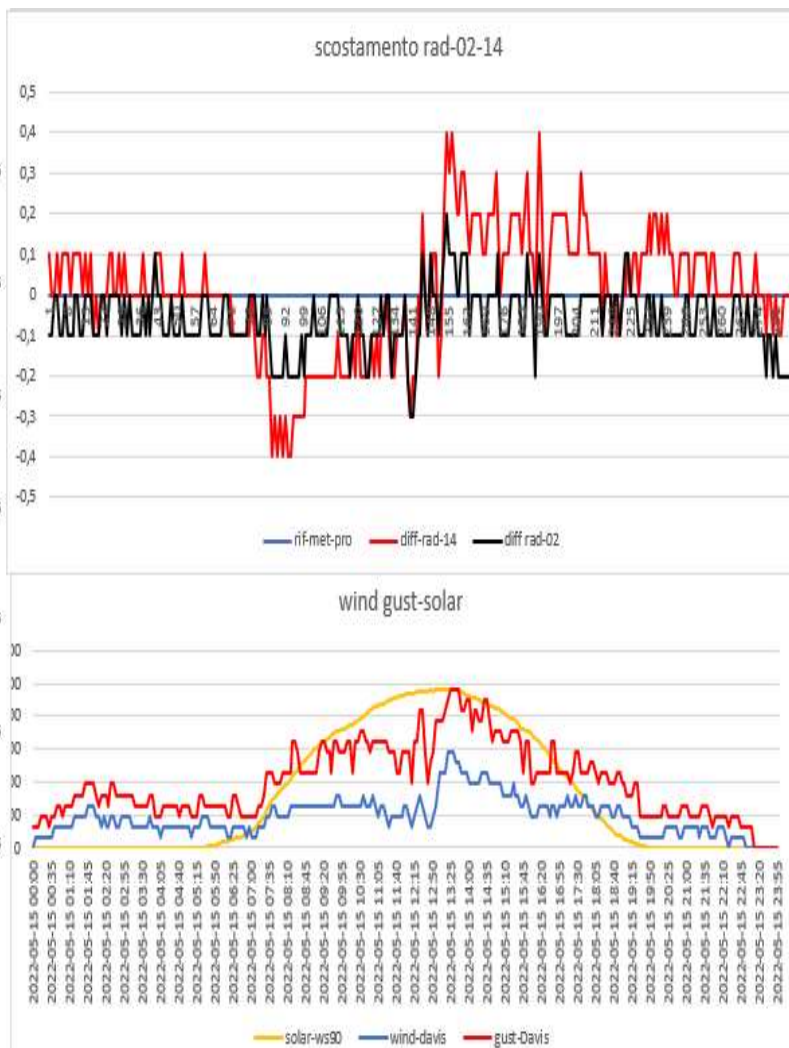
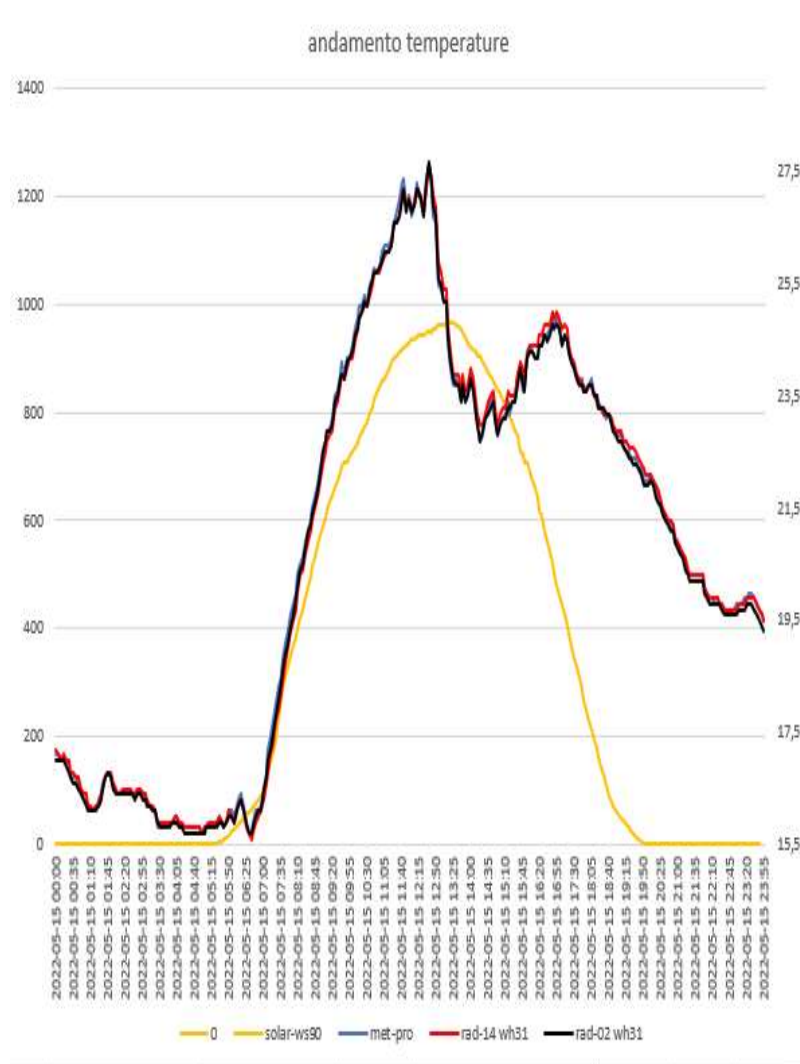
Davis vp2 pro- METEOSHIELD PRO (sensore sonda wh32EP ecowitt)



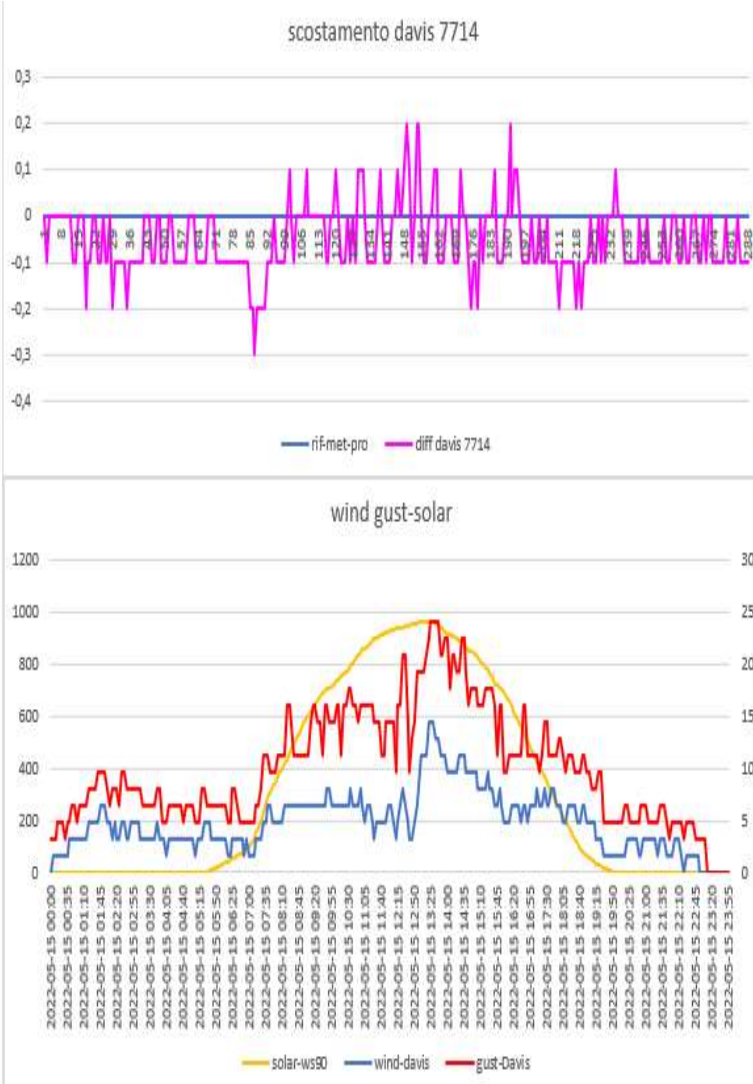
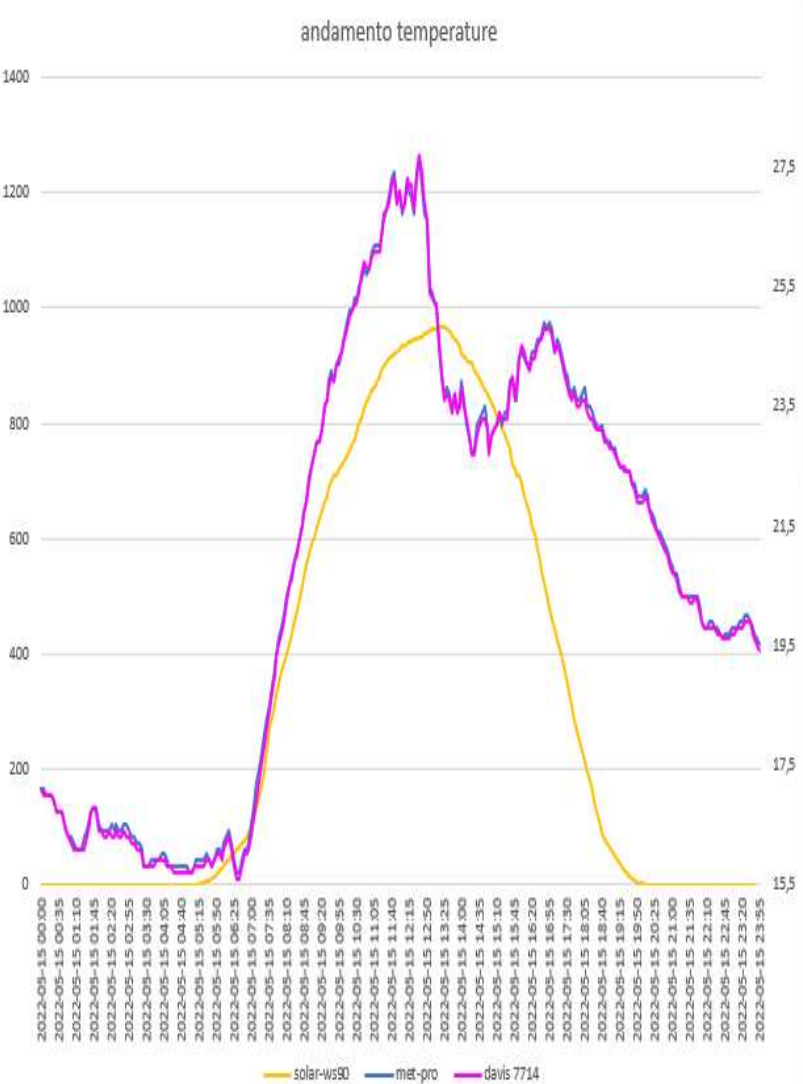
Lsi IASTEM(sensore sonda wh31EP ecowitt) - METEOSHIELD PRO (sensore sonda wh32EP ecowitt)



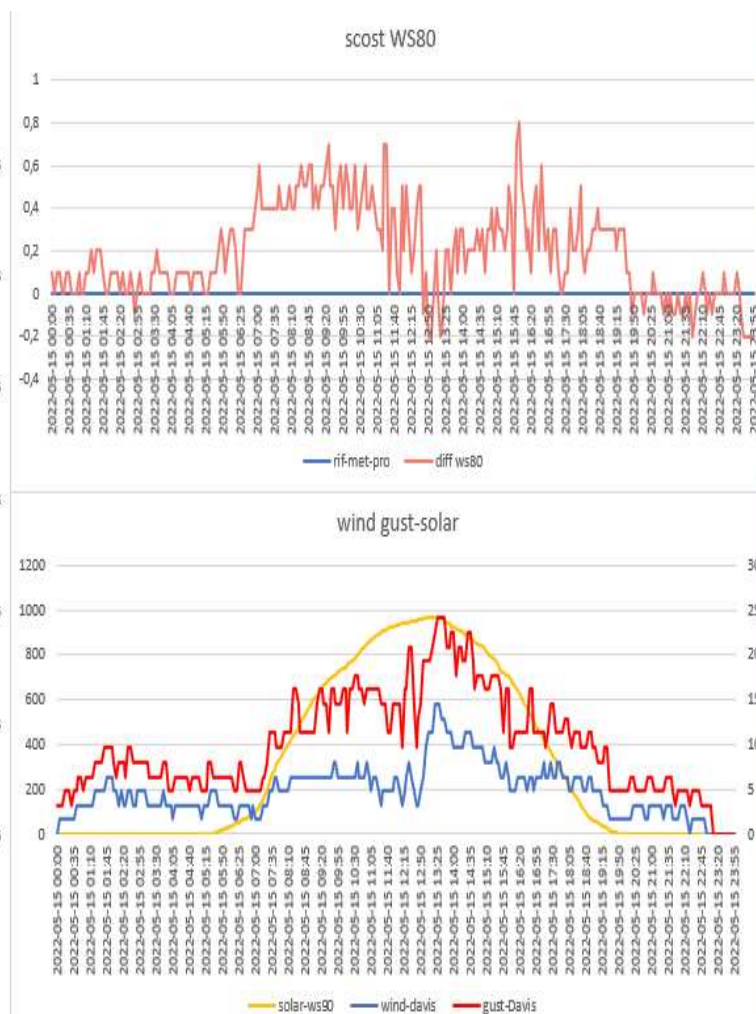
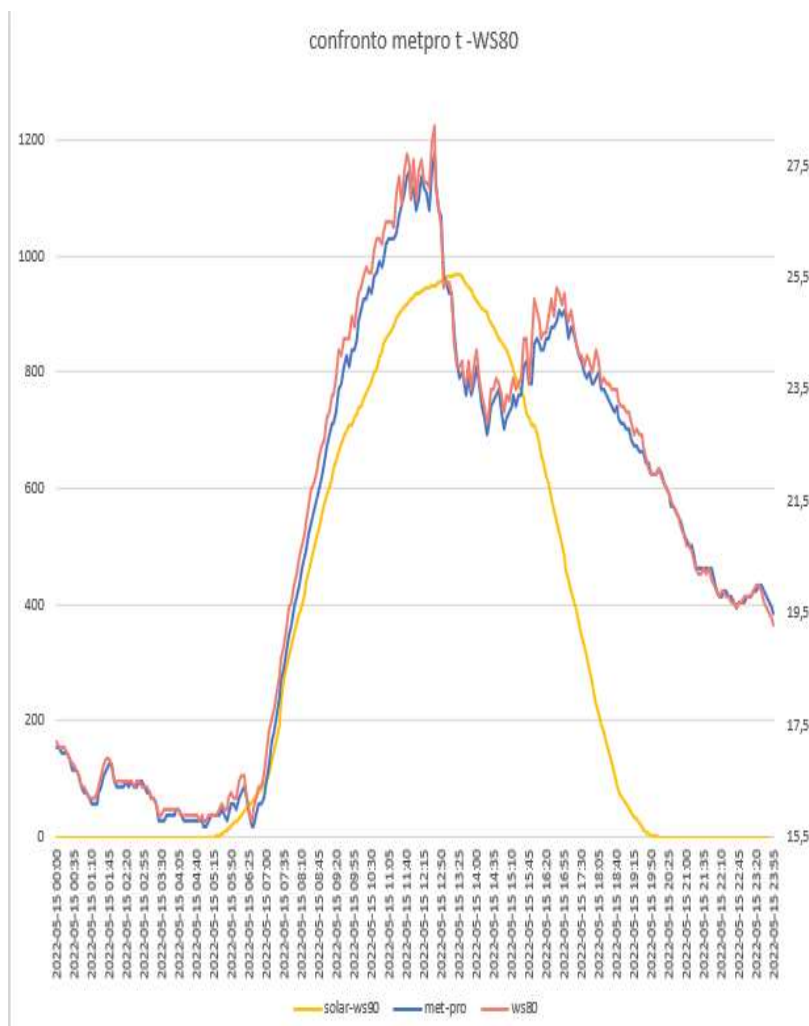
RAD-02-14(sensore sonda WH31EP ecowitt) – METEOSHIELD PRO (sensore sonda wh32EP ecowitt)



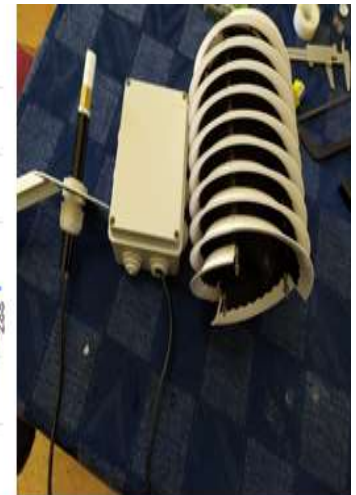
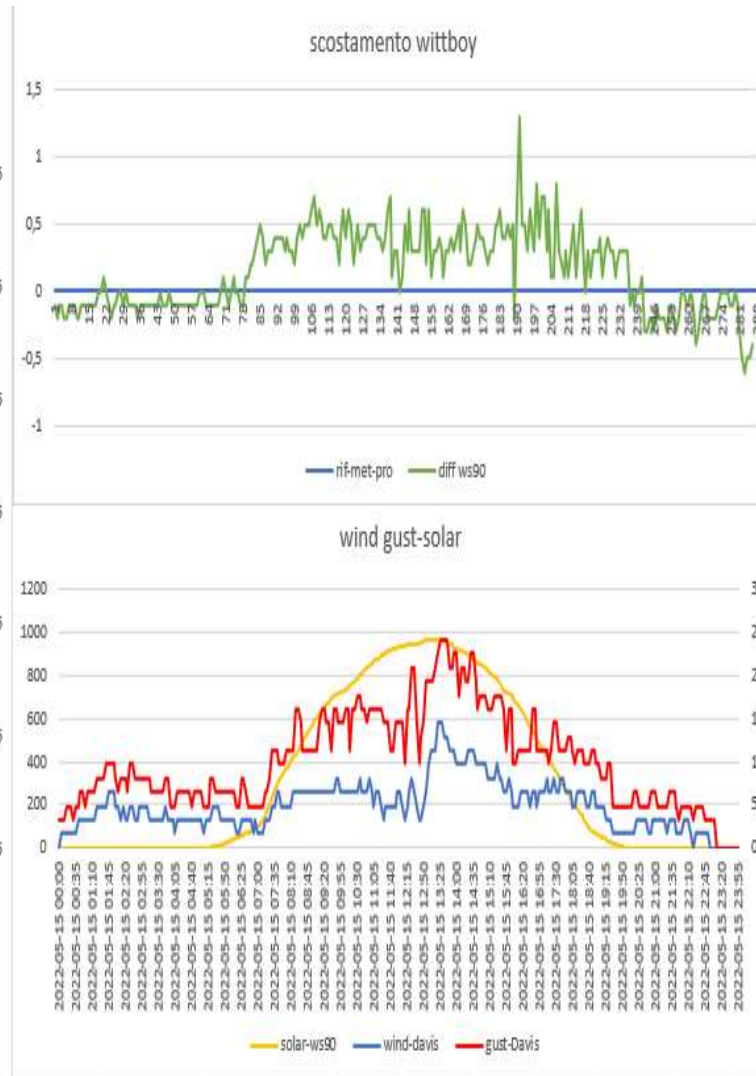
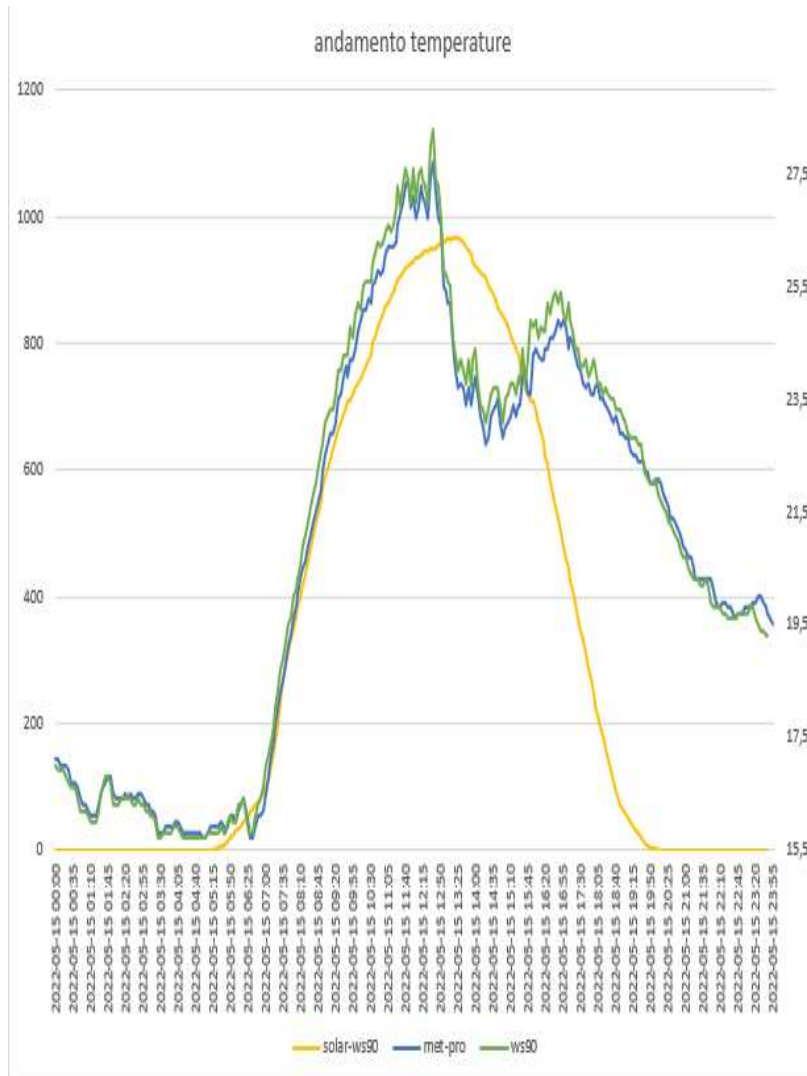
DAVIS 7714(sensore sonda wh31EP ecowitt)-METEOSHIELD PRO (sensore sonda wh32EP ecowitt)



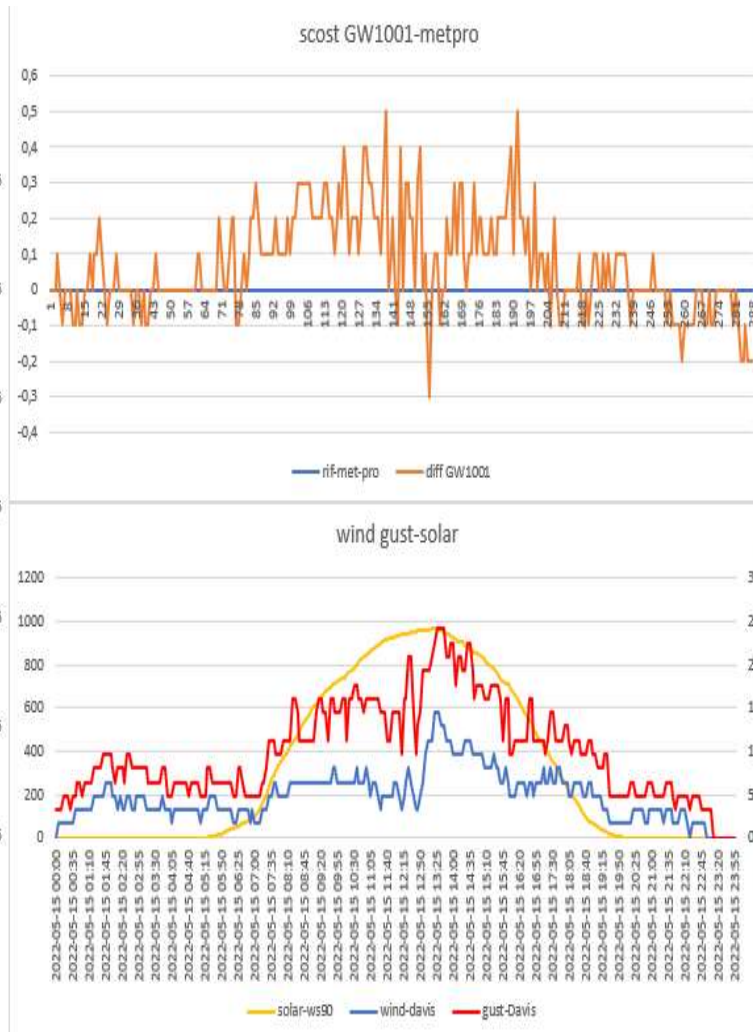
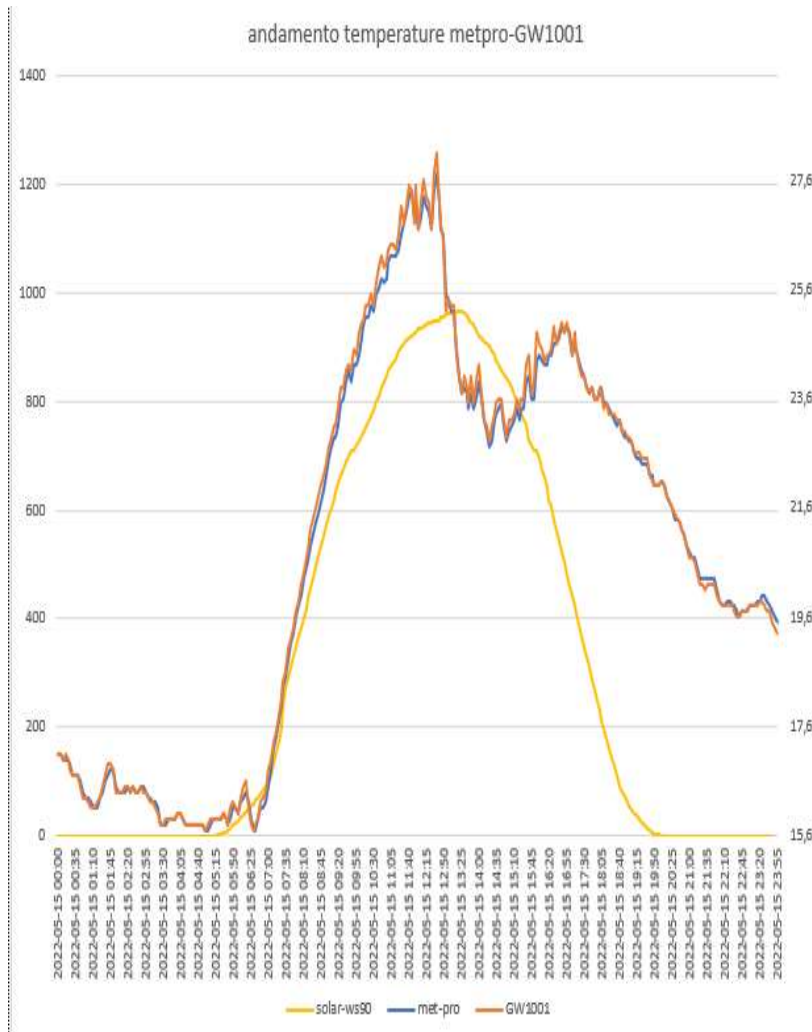
WS80 ecowitt- METEOSHIELD PRO (sensore sonda wh32EP ecowitt)



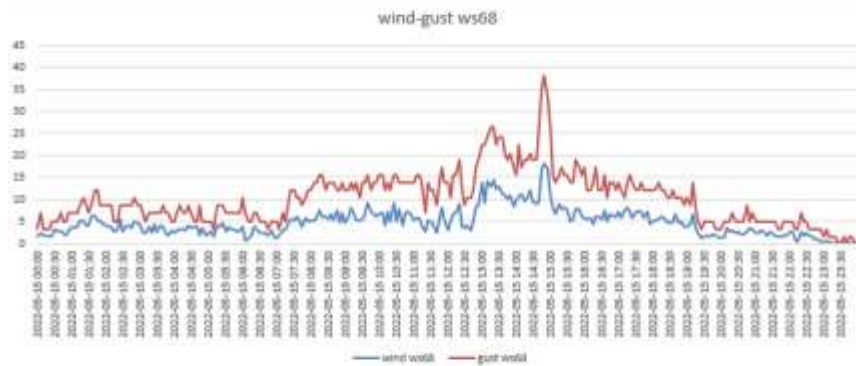
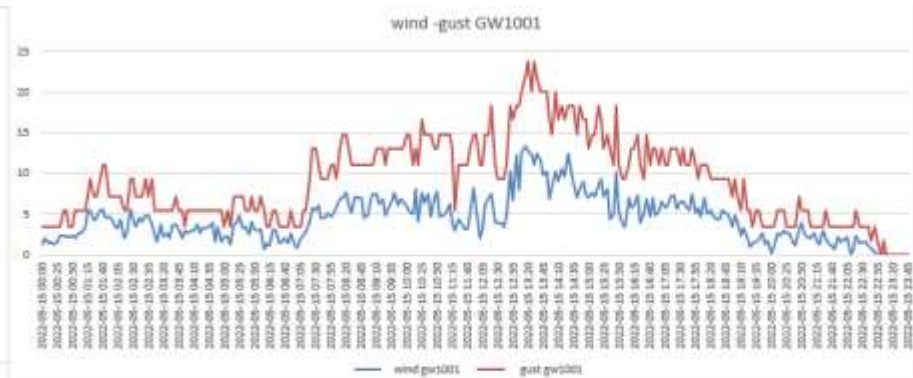
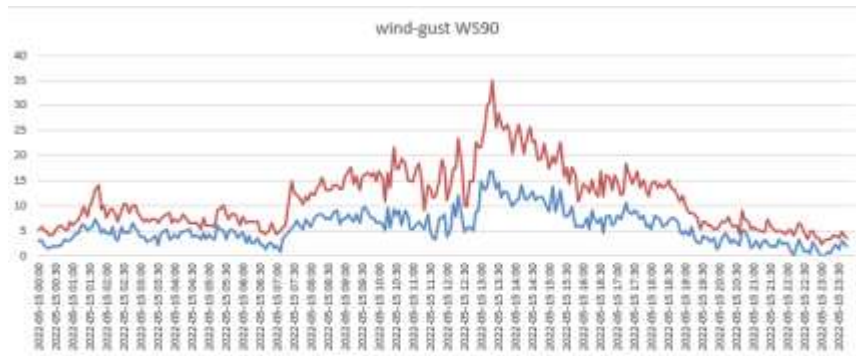
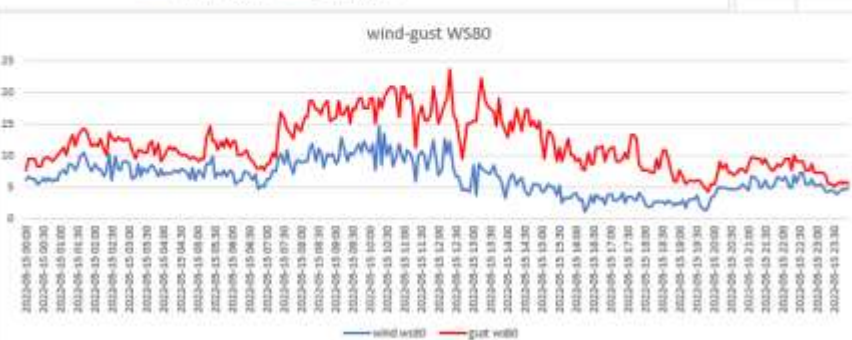
WITTBOY ecowit- METEOSHIELD PRO (sensore sonda wh32EP ecowitt) (TEST)



GW1001 ecowitt-METEOSHIELD PRO (sensore sonda wh32EP ecowitt)



CONFRONTO ANEMOMETRI

[illegible]

DATI STATISTICI (MEDIE MASSIME MINIME)

vento medio 24H	4,814583333	km/h	vento medio ore di sole	6,818803									
media met pro	20,896875												
max met pro	27,7												
min met pro	15,7												
media GW1001	20,96527778		scost medio GW1001	0,07028									
max GW1001	28,1		scost max GW1001	0,5									
minima GW1001	15,7		scost min GW1001	-0,3									
media davis vp2 pro	20,84270833		scost medio davis vp2 pro	0,072028									
max davis vp2pro	27,7		scost max davis vp2 pro	0,5									
min davis vp2 pro	15,6		scost min davis vp2 pro	-0,3									
media rad-14	20,90347222		scost medio rad-14	-0,06154									
max rad-14	27,6		scost max rad-14	0,2									
min rad-14	15,6		scost min rad-14	-0,3									
media rad-02	20,834375		scost medio rad-02	-0,0625									
max rad-02	27,7		scost max rad-02	0,2									
min rad-02	15,7		scost min rad-02	-0,3									
media lastem	21,06736111		scost medio lastem	0,172028		media WS80	21,08784722		scost medio WS80	0,19097			
max lastem	28,1		scost max lastem	0,6		max WS80	28,2		scost max WS80	0,8			
min lastem	15,7		scost min lastem	-0,1		min WS80	15,8		scost min WS80	-0,2			
media davis 7714	20,84270833		scost medio davis 7714	-0,05417		media ws90	21,06083916		scost medio ws90	0,15455			
max davis 7714	27,7		scost max davis 7714	0,2		max ws90	28,3		scost max ws90	1,3			
min davis 7714	15,6		scost min davis 7714	-0,3		min ws90	15,7		scost min ws90	-0,6			

