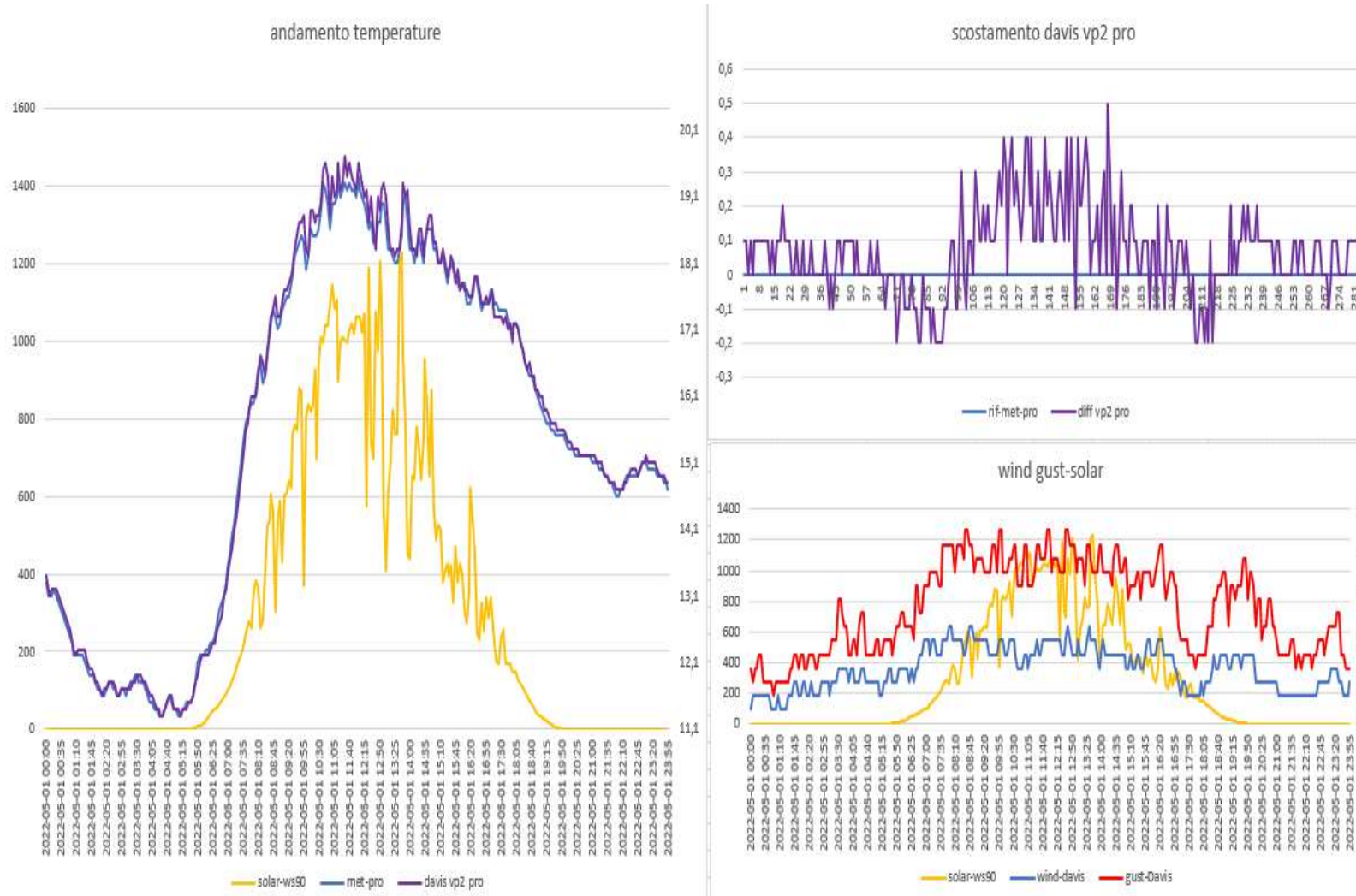
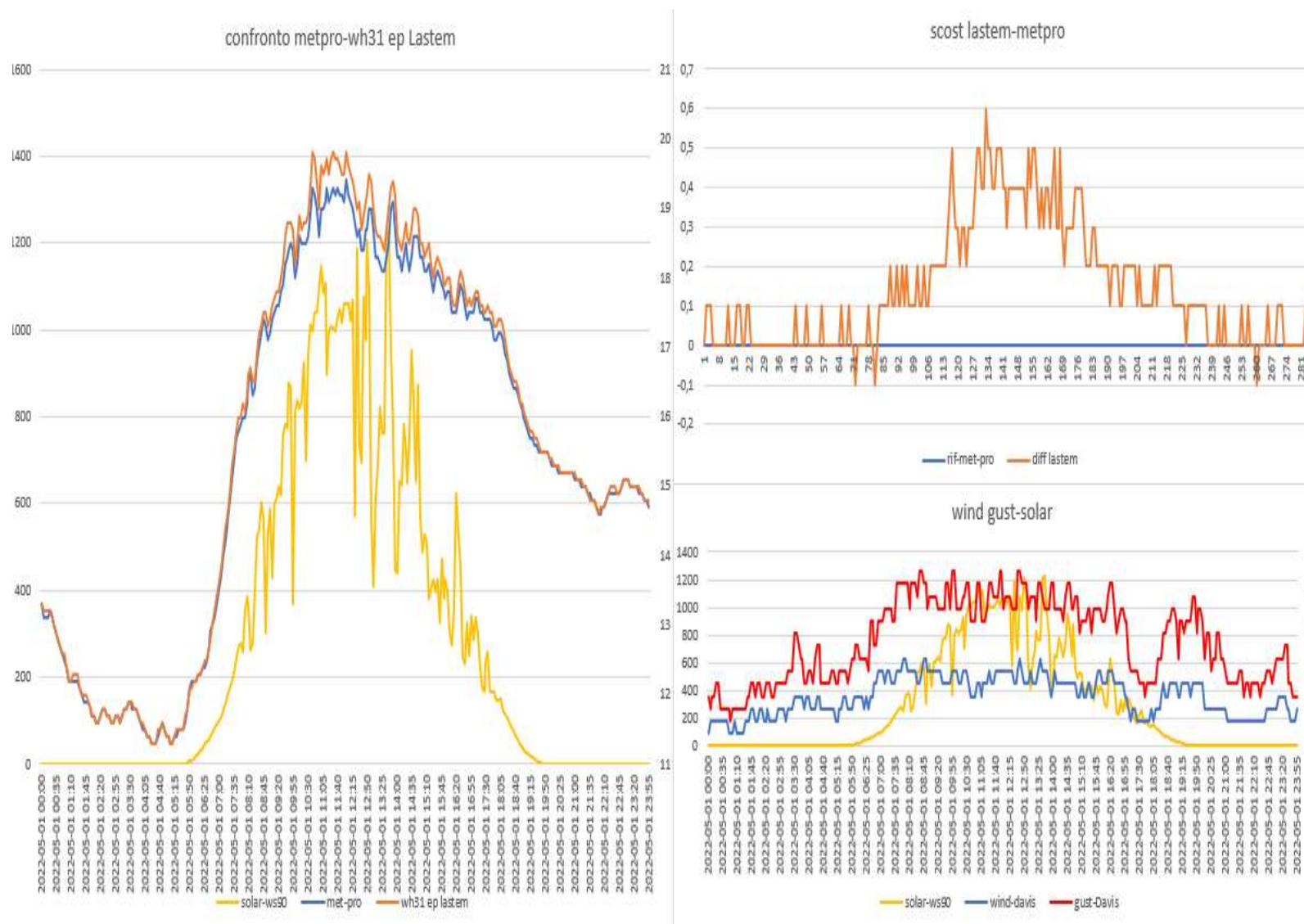


ANDAMENTO SCHERMI DEL 01-05-2022

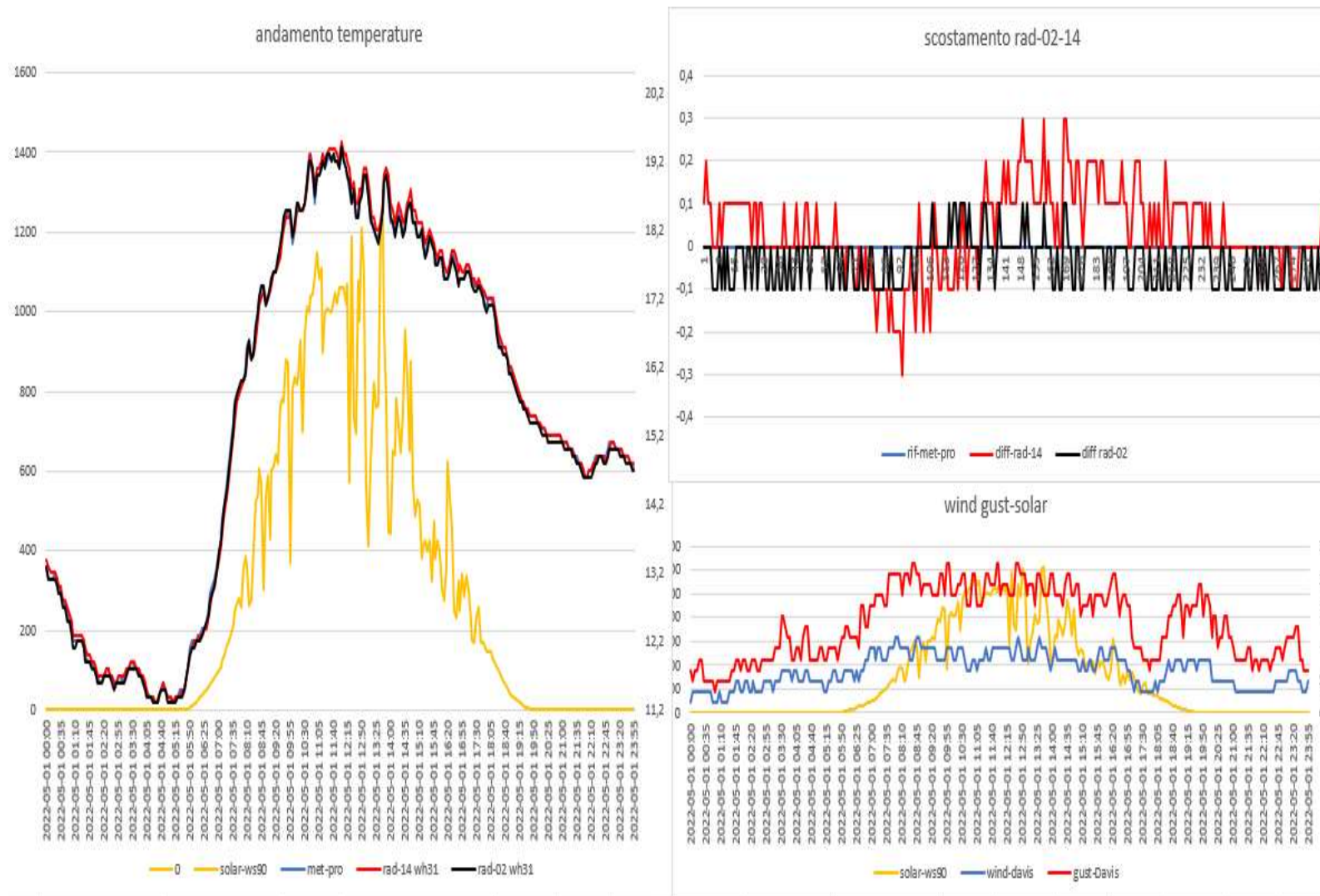
Davis vp2 pro- METEOSHIELD PRO (sensore sonda wh32EP ecowitt)



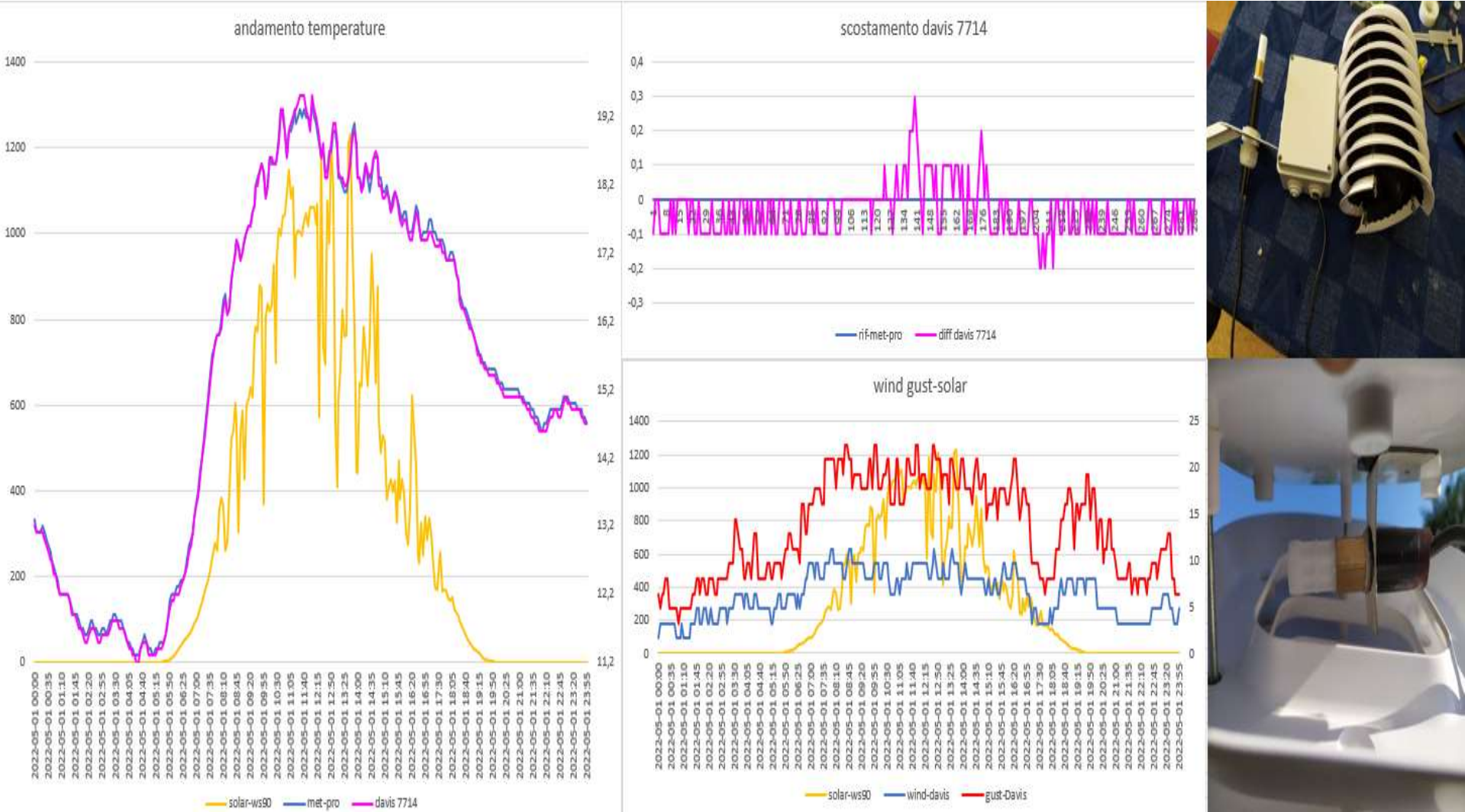
Lsi IASTEM(sensore sonda wh31EP ecowitt) - METEOSHIELD PRO (sensore sonda wh32EP ecowitt)



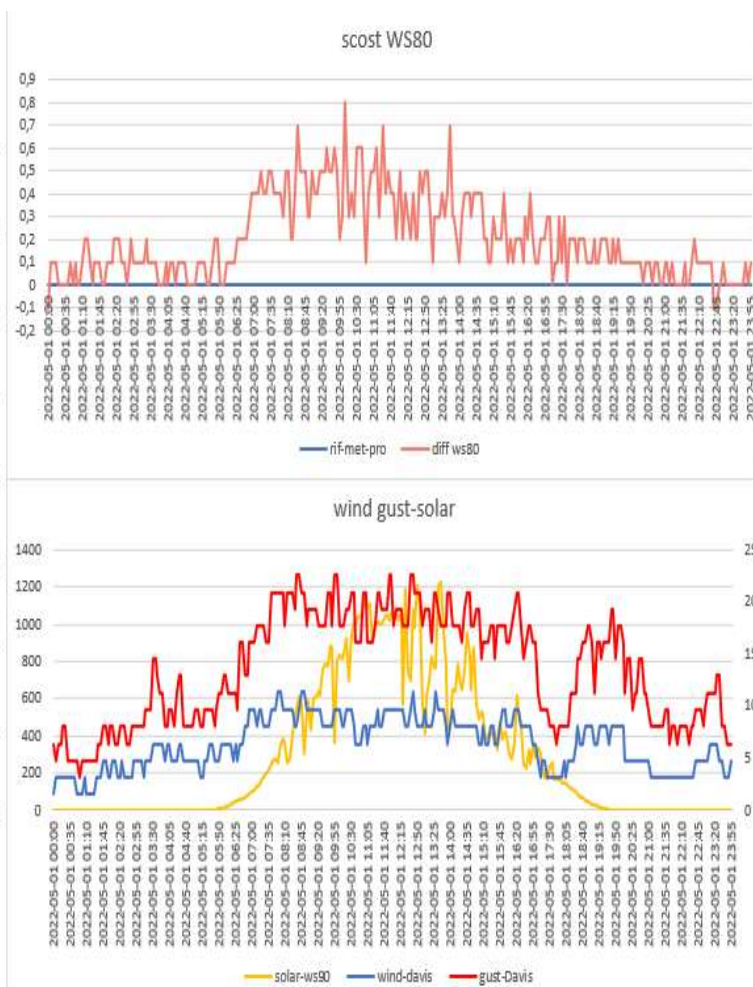
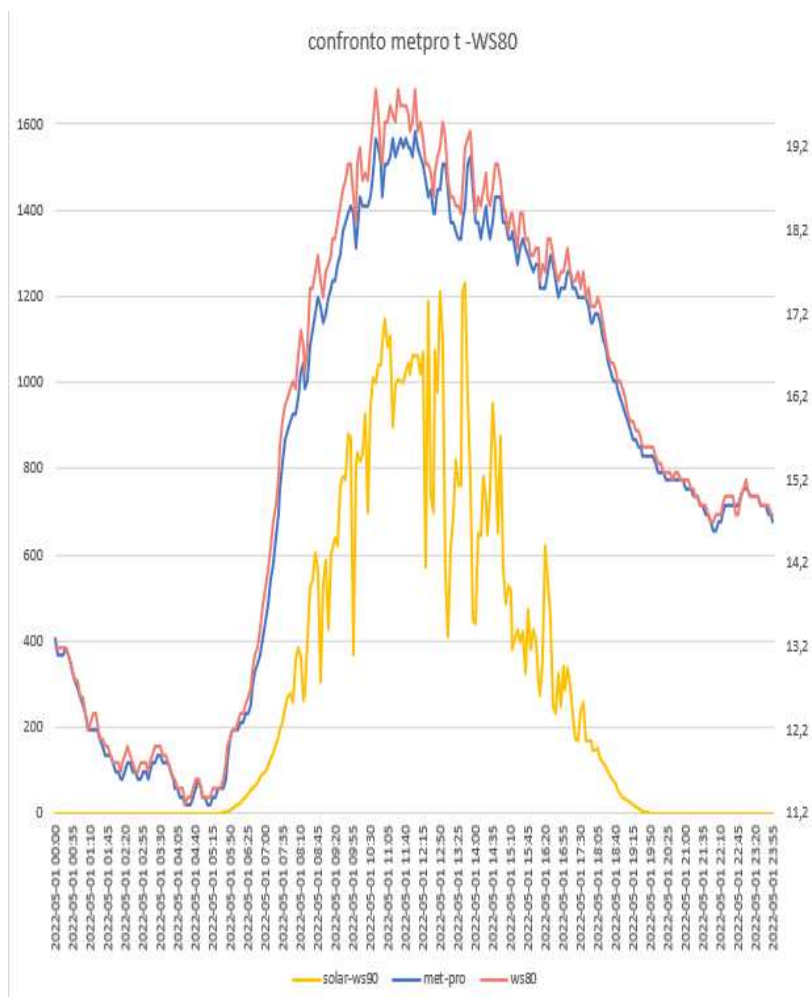
RAD-02-14(sensore sonda WH31EP ecowitt) – METEOSHIELD PRO (sensore sonda wh32EP ecowitt)



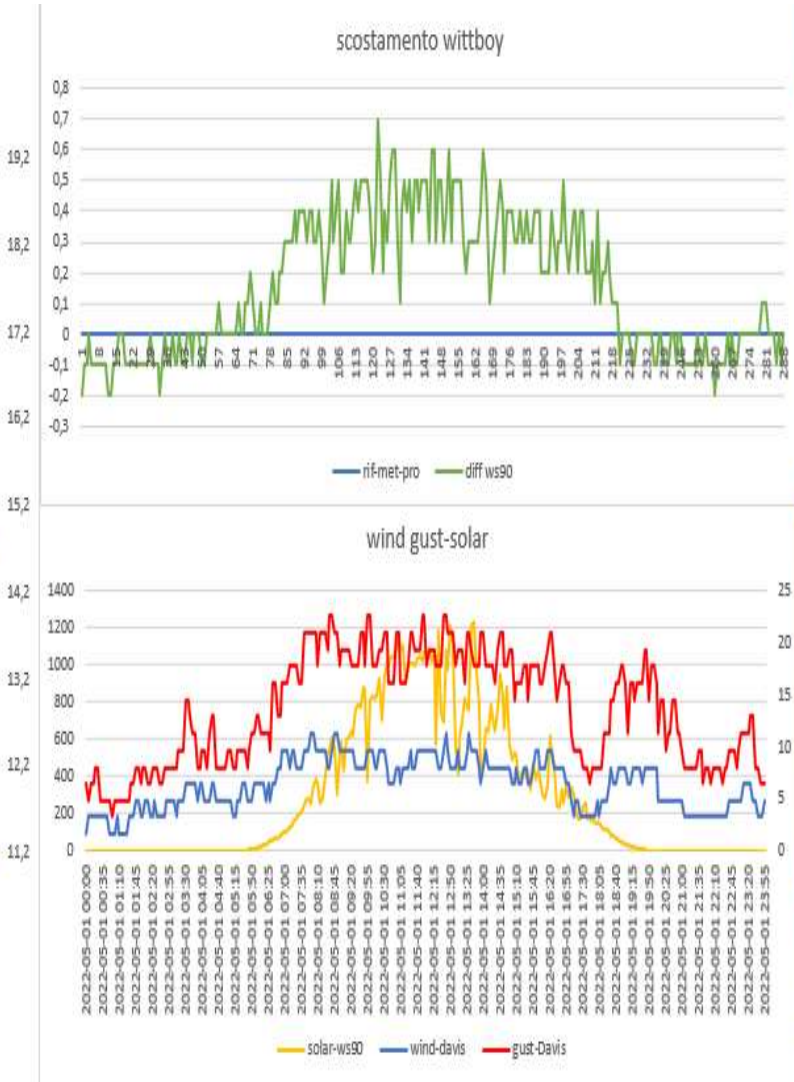
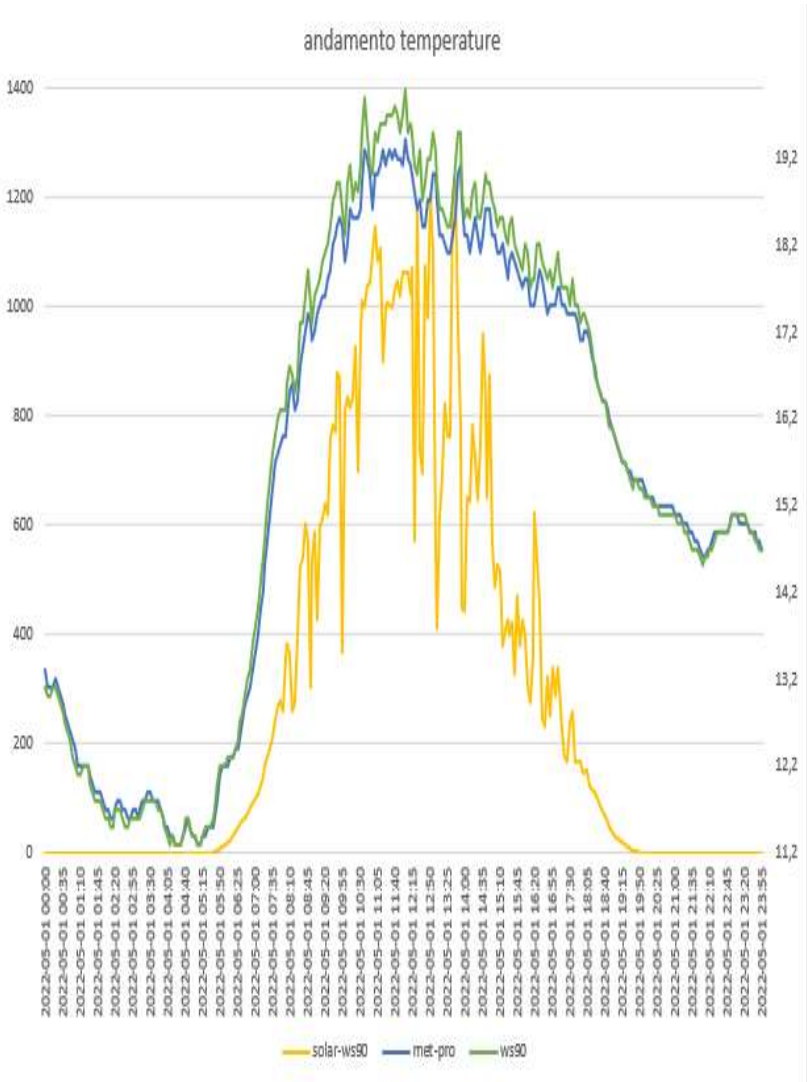
DAVIS 7714(sensore sonda wh31EP ecowit)-METEOSHIELD PRO (sensore sonda wh32EP ecowitt)



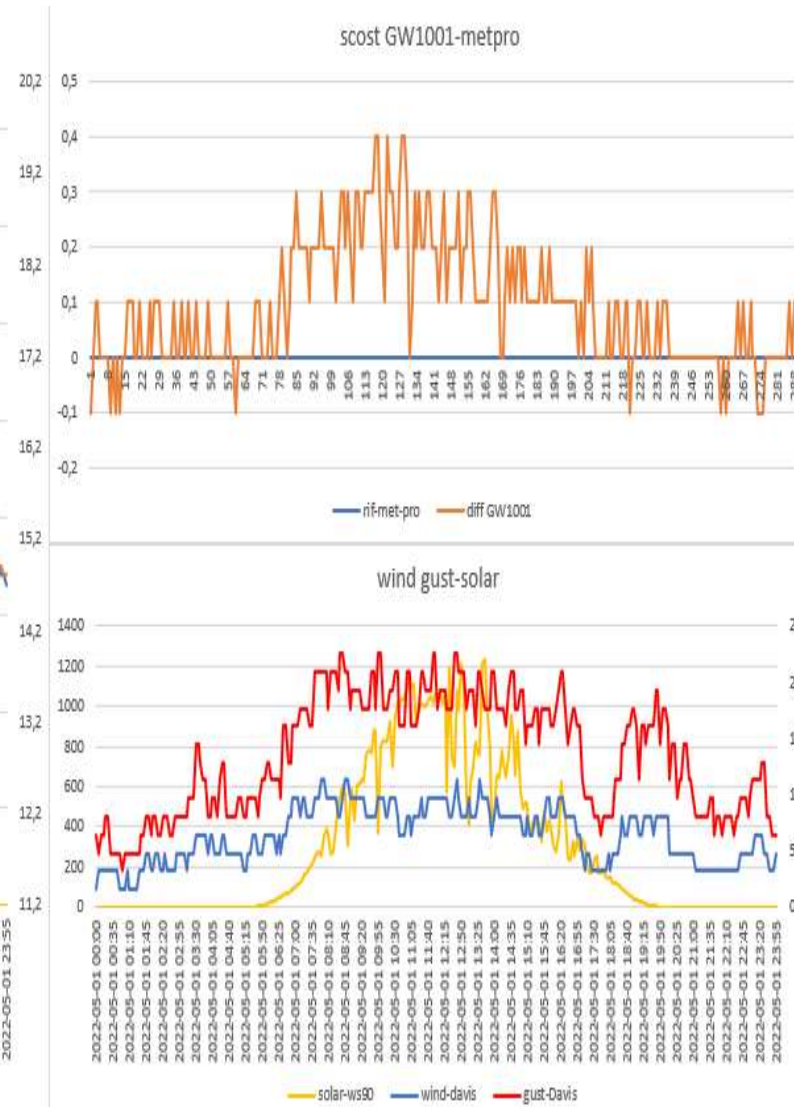
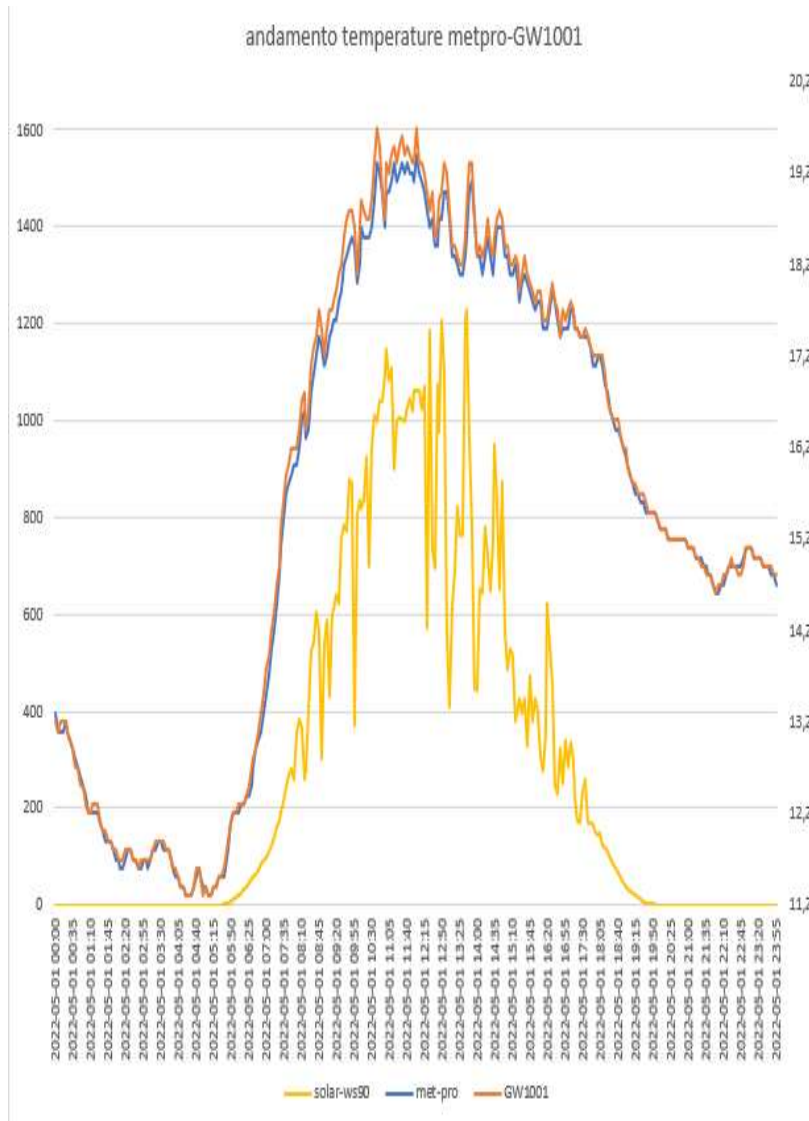
WS80 ecowitt- METEOSHIELD PRO (sensore sonda wh32EP ecowitt)



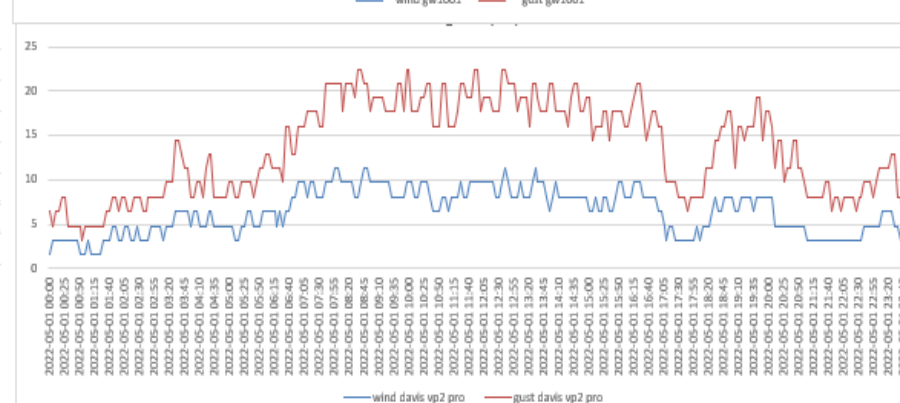
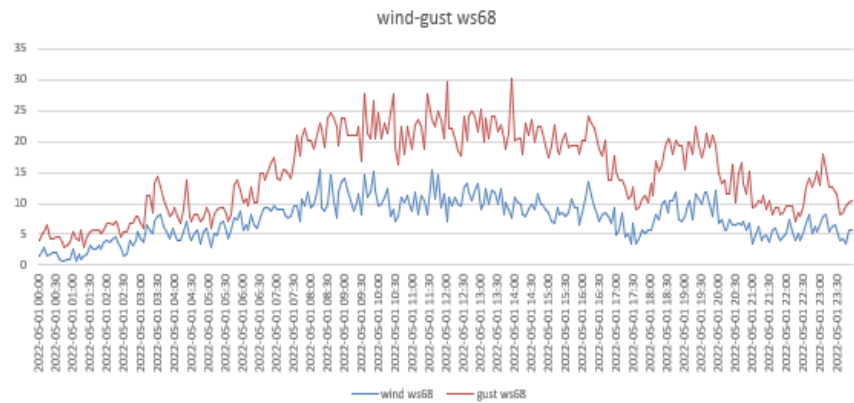
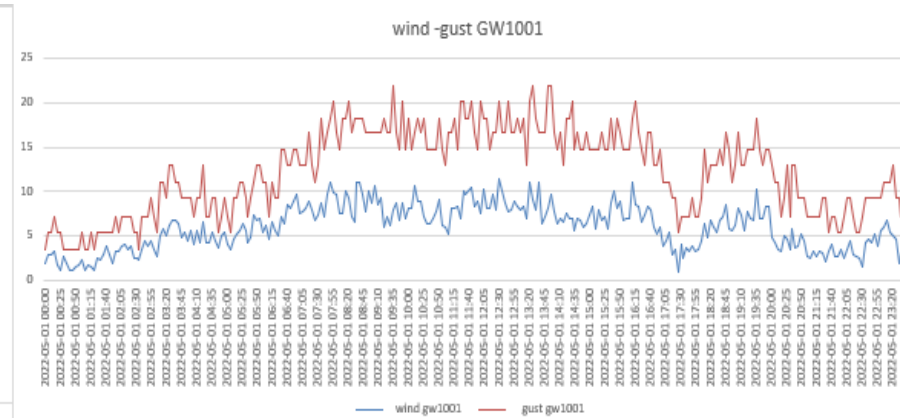
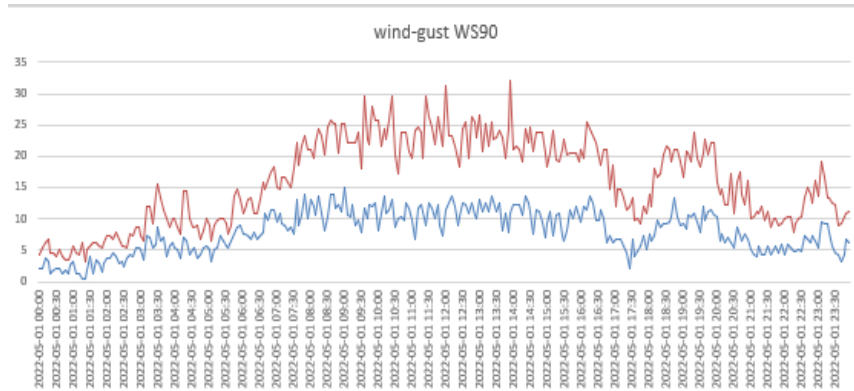
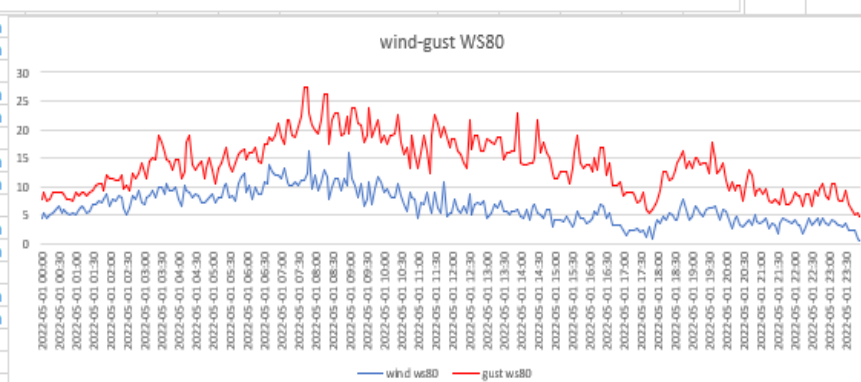
WITTBOY ecowit- METEOSHIELD PRO (sensore sonda wh32EP ecowitt)



GW1001 ecowitt-METEOSHIELD PRO (sensore sonda wh32EP ecowitt)



CONFRONTO ANEMOMETRI

[illegible]

DATI STATISTICI (MEDIE MASSIME MINIME)

vento medio 24H	6,402777778	km/h	vento medio ore di sole	8,647009								
media met pro	15,51805556											
max met pro	19,4											
min met pro	11,3											
media GW1001	15,61006944		scost medio GW1001	0,092308								
max GW1001	19,7		scost max GW1001	0,4								
minima GW1001	11,3		scost min GW1001	-0,1								
media davis vp2 pro	15,48055556		scost medio davis vp2 pro	0,066783								
max davis vp2pro	19,5		scost max davis vp2 pro	0,5								
min davis vp2 pro	11,2		scost min davis vp2 pro	-0,2								
media rad-14	15,553125		scost medio rad-14	-0,03322								
max rad-14	19,5		scost max rad-14	0,1								
min rad-14	11,3		scost min rad-14	-0,1								
media rad-02	15,48472222		scost medio rad-02	-0,03333								
max rad-02	19,4		scost max rad-02	0,1								
min rad-02	11,3		scost min rad-02	-0,1								
media lastem	15,65833333		scost medio lastem	0,140909		media WS80	15,72118056		scost medio WS80	0,20313		
max lastem	19,8		scost max lastem	0,6		max WS80	19,9		scost max WS80	0,8		
min lastem	11,3		scost min lastem	-0,1		min WS80	11,3		scost min WS80	-0,1		
media davis 7714	15,48055556		scost medio davis 7714	-0,0375		media ws90	15,66666667		scost medio ws90	0,14861		
max davis 7714	19,5		scost max davis 7714	0,3		max ws90	20		scost max ws90	0,7		
min davis 7714	11,2		scost min davis 7714	-0,2		min ws90	11,3		scost min ws90	-0,2		