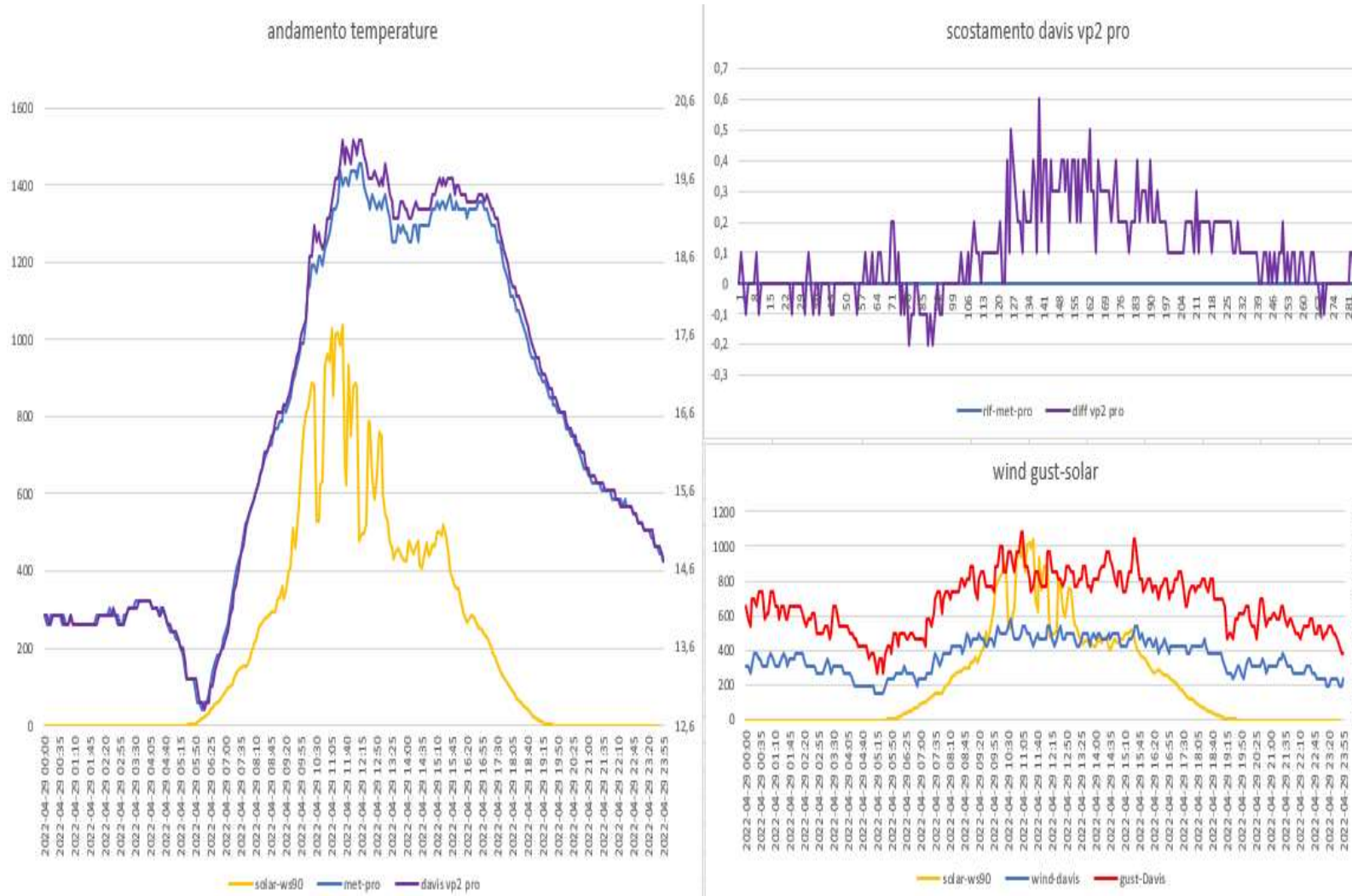
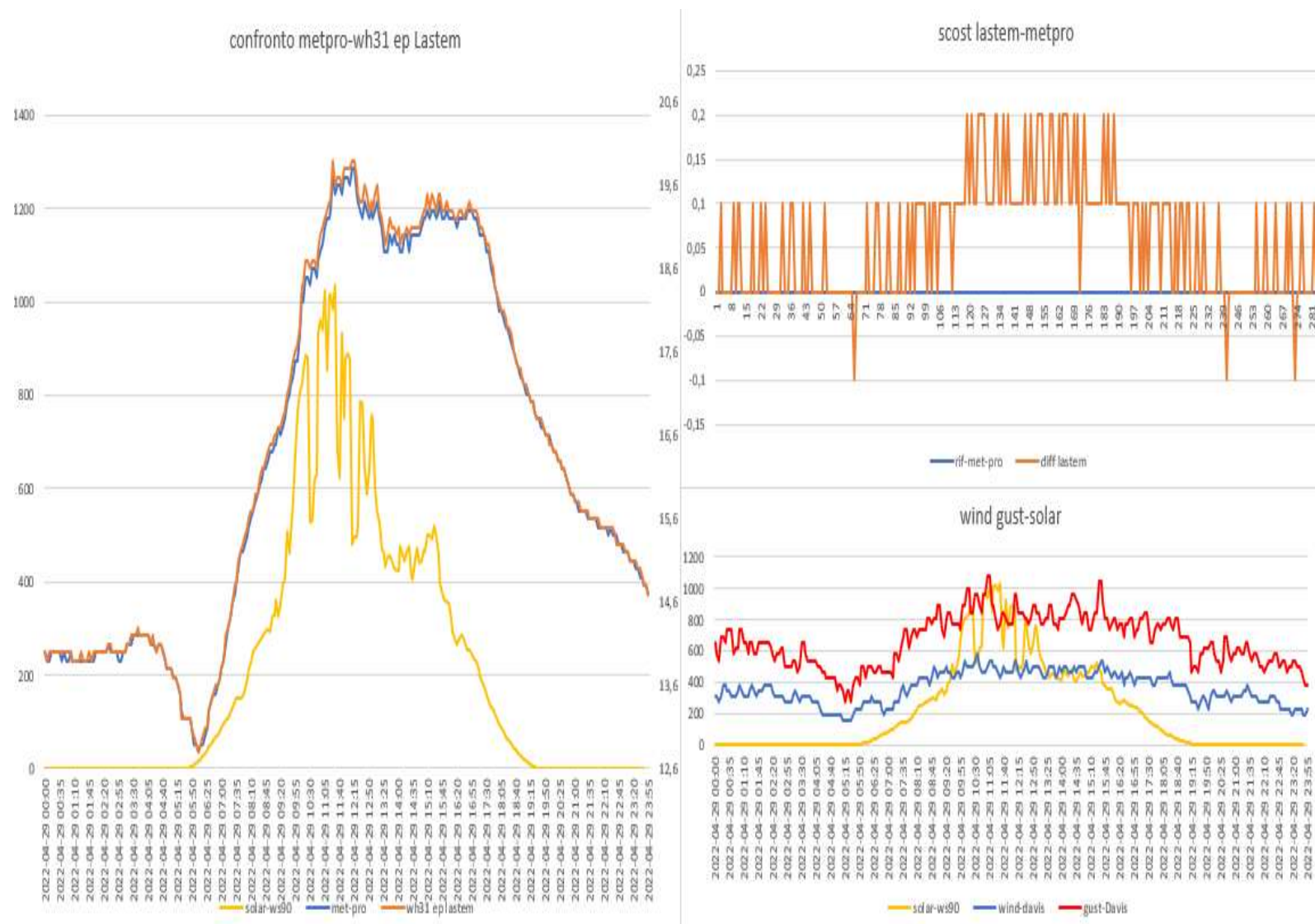


ANDAMENTO SCHERMI DEL 29-04-2022

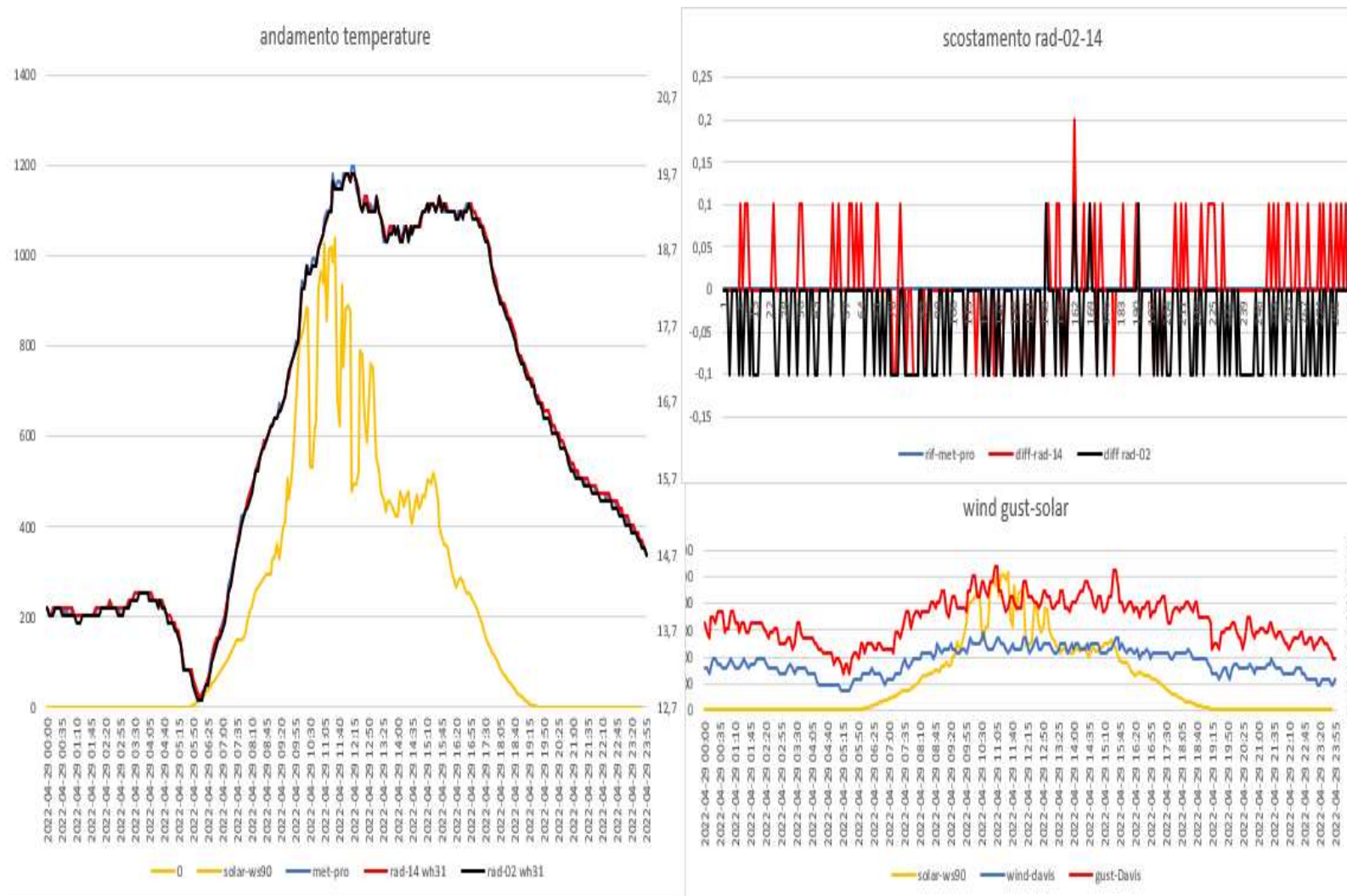
Davis vp2 pro- METEOSHIELD PRO (sensore sonda wh32EP ecowitt)



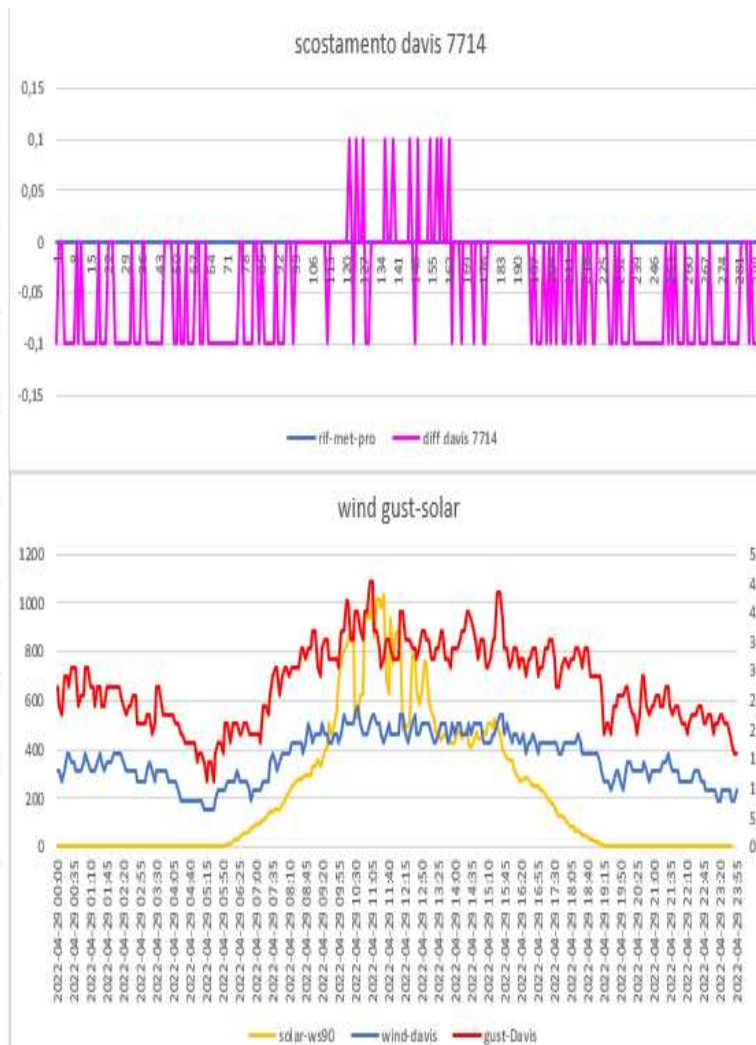
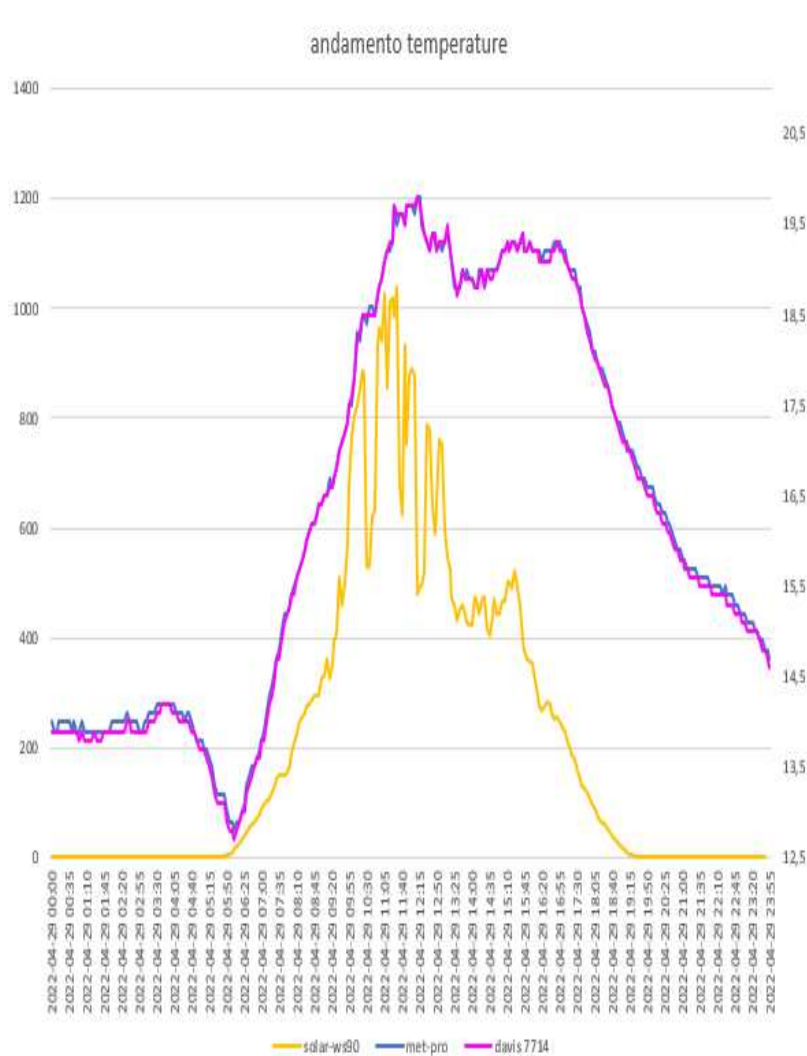
Lsi IASTEM(sensore sonda wh31EP ecowitt) - METEOSHIELD PRO (sensore sonda wh32EP ecowitt)



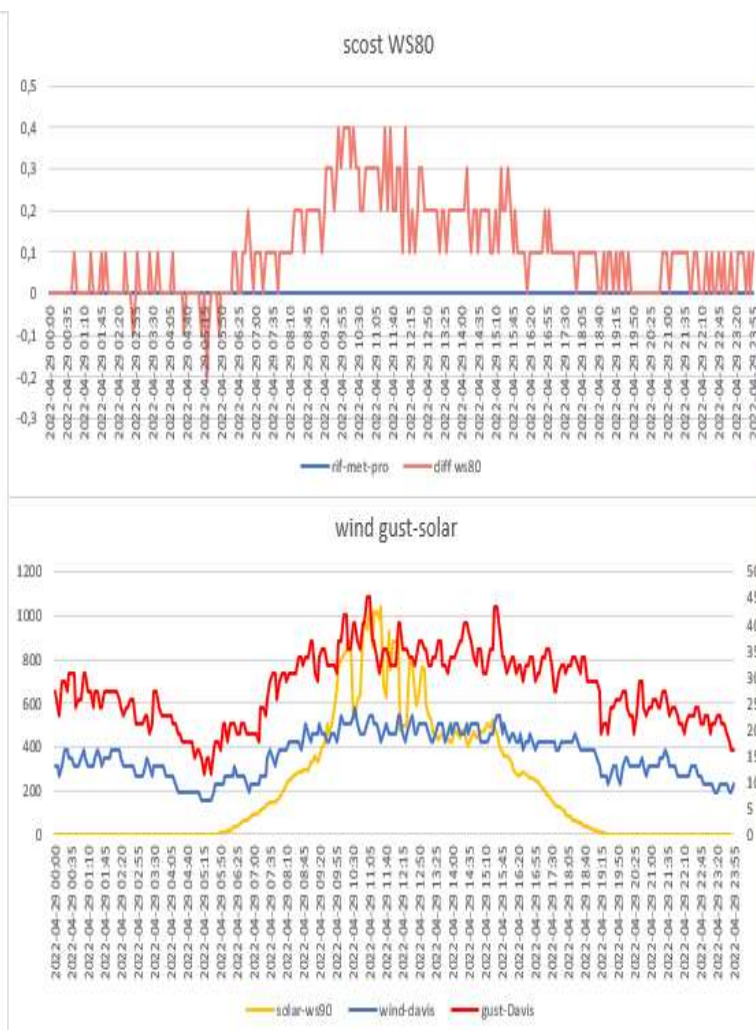
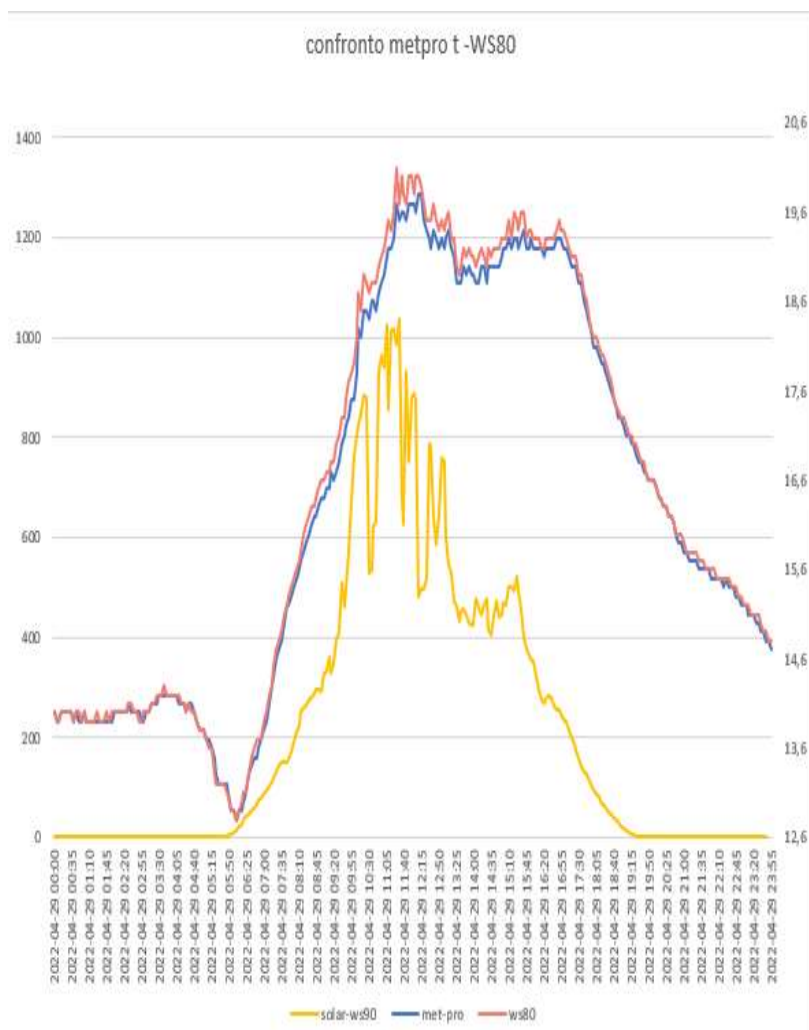
RAD-02-14(sensore sonda WH31EP ecowitt) – METEOSHIELD PRO (sensore sonda wh32EP ecowitt)



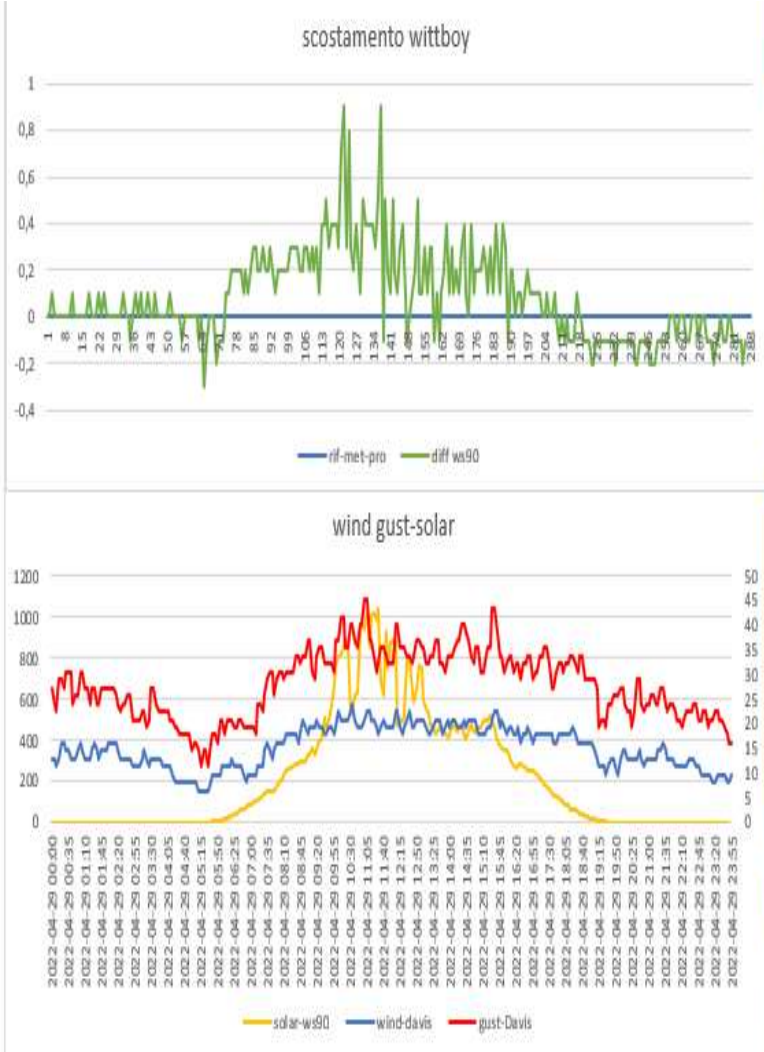
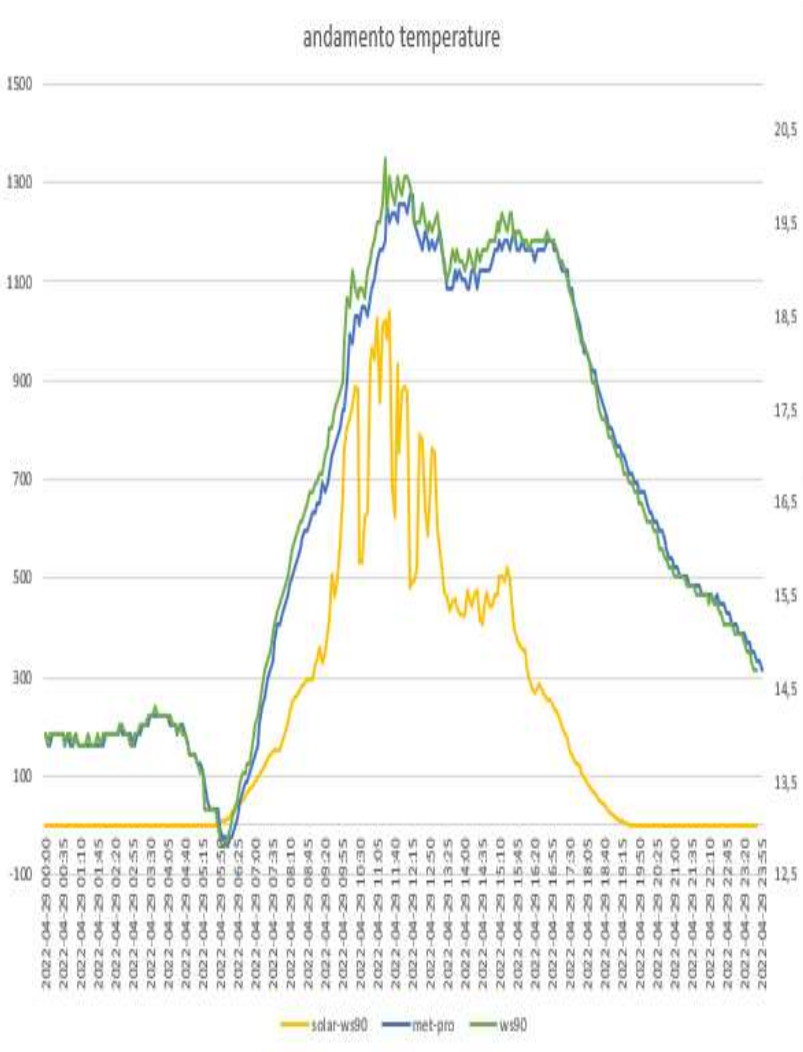
DAVIS 7714(sensore sonda wh31EP ecowit)-METEOSHIELD PRO (sensore sonda wh32EP ecowitt)



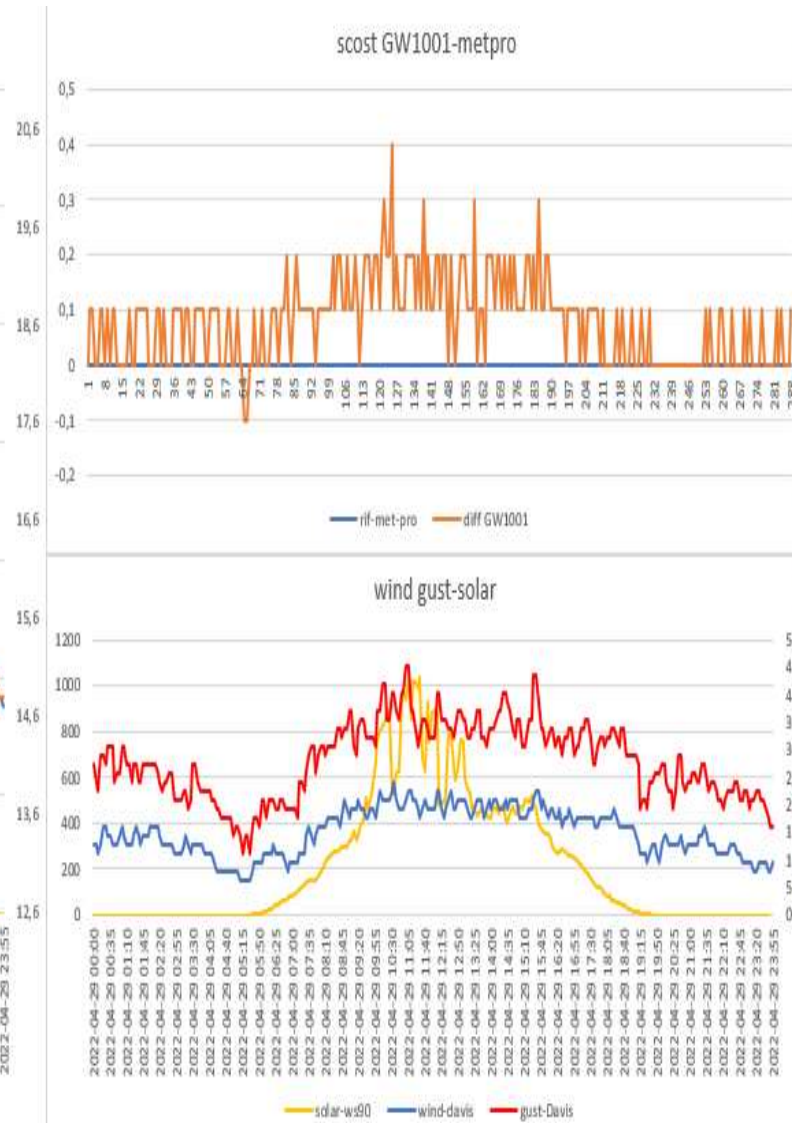
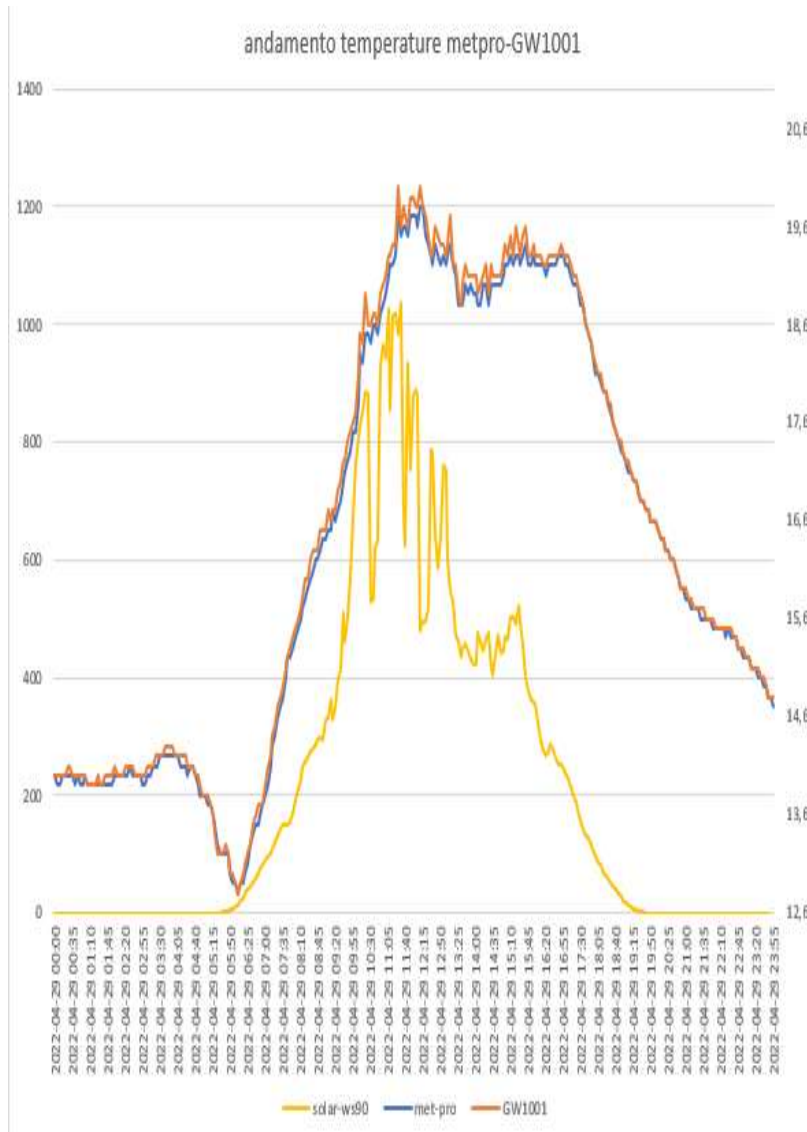
WS80 ecowitt- METEOSHIELD PRO (sensore sonda wh32EP ecowitt)



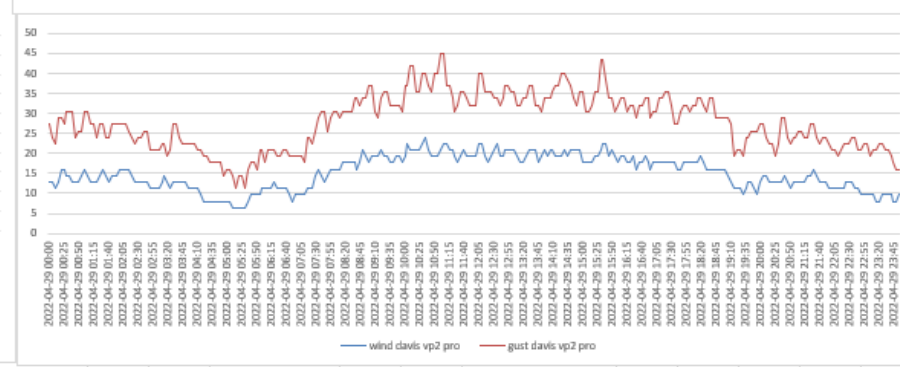
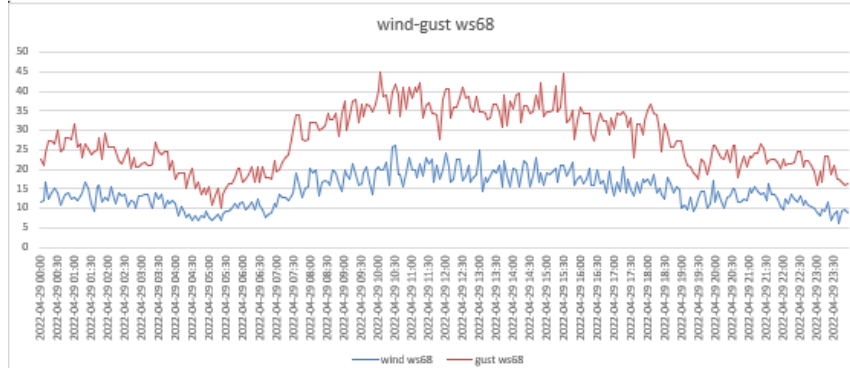
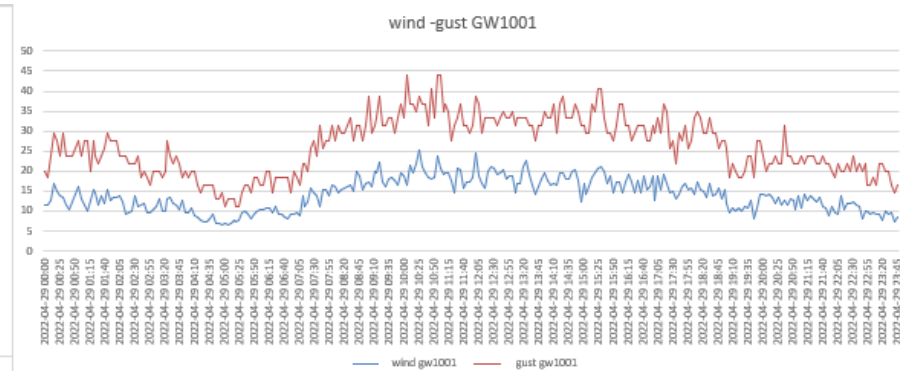
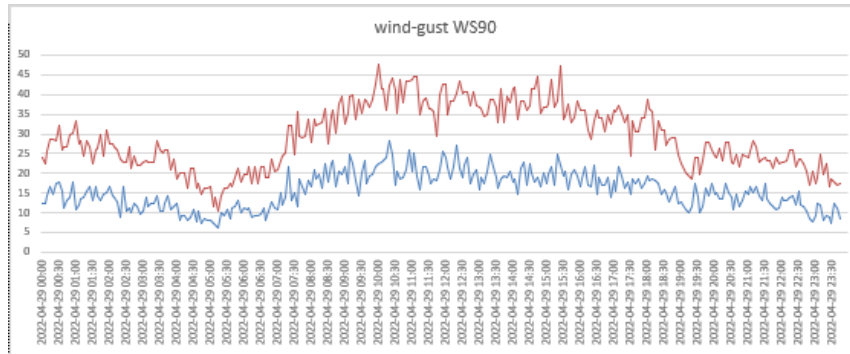
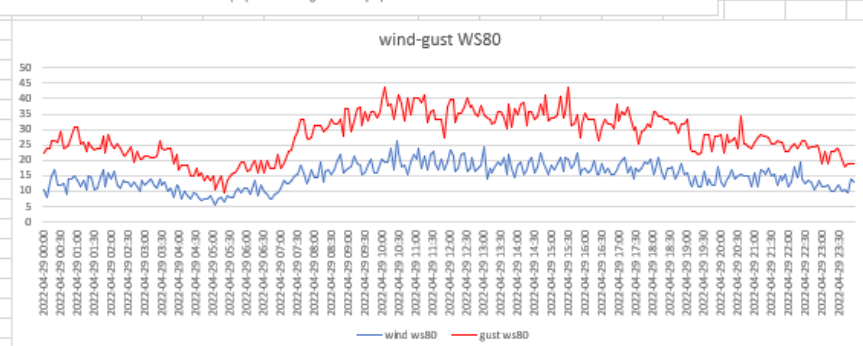
WITTBOY ecowit- METEOSHIELD PRO (sensore sonda wh32EP ecowitt)



GW1001 ecowitt-METEOSHIELD PRO (sensore sonda wh32EP ecowitt)



CONFRONTO ANEMOMETRI

[illegible]

DATI STATISTICI (MEDIE MASSIME MINIME)

vento medio 24H	15,159375	km/h	vento medio ore di sole	18,45128								
media met pro	16,39097222											
max met pro	19,8											
min met pro	12,8											
media GW1001	16,46979167		scost medio GW1001	0,079021								
max GW1001	20		scost max GW1001	0,4								
minima GW1001	12,8		scost min GW1001	-0,1								
media davis vp2 pro	16,34583333		scost medio davis vp2 pro	0,101399								
max davis vp2pro	19,8		scost max davis vp2 pro	0,6								
min davis vp2 pro	12,7		scost min davis vp2 pro	-0,2								
media rad-14	16,39756944		scost medio rad-14	-0,03357								
max rad-14	19,7		scost max rad-14	0,1								
min rad-14	12,8		scost min rad-14	-0,1								
media rad-02	16,35763889		scost medio rad-02	-0,03333								
max rad-02	19,7		scost max rad-02	0,1								
min rad-02	12,8		scost min rad-02	-0,1								
media lastem	16,45		scost medio lastem	0,059441		media WS80	16,49236111		scost medio WS80	0,10139		
max lastem	19,9		scost max lastem	0,2		max WS80	20,1		scost max WS80	0,4		
min lastem	12,8		scost min lastem	-0,1		min WS80	12,8		scost min WS80	-0,2		
media davis 7714	16,34583333		scost medio davis 7714	-0,04514		media ws90	16,48566434		scost medio ws90	0,08322		
max davis 7714	19,8		scost max davis 7714	0,1		max ws90	20,2		scost max ws90	0,9		
min davis 7714	12,7		scost min davis 7714	-0,1		min ws90	12,8		scost min ws90	-0,3		