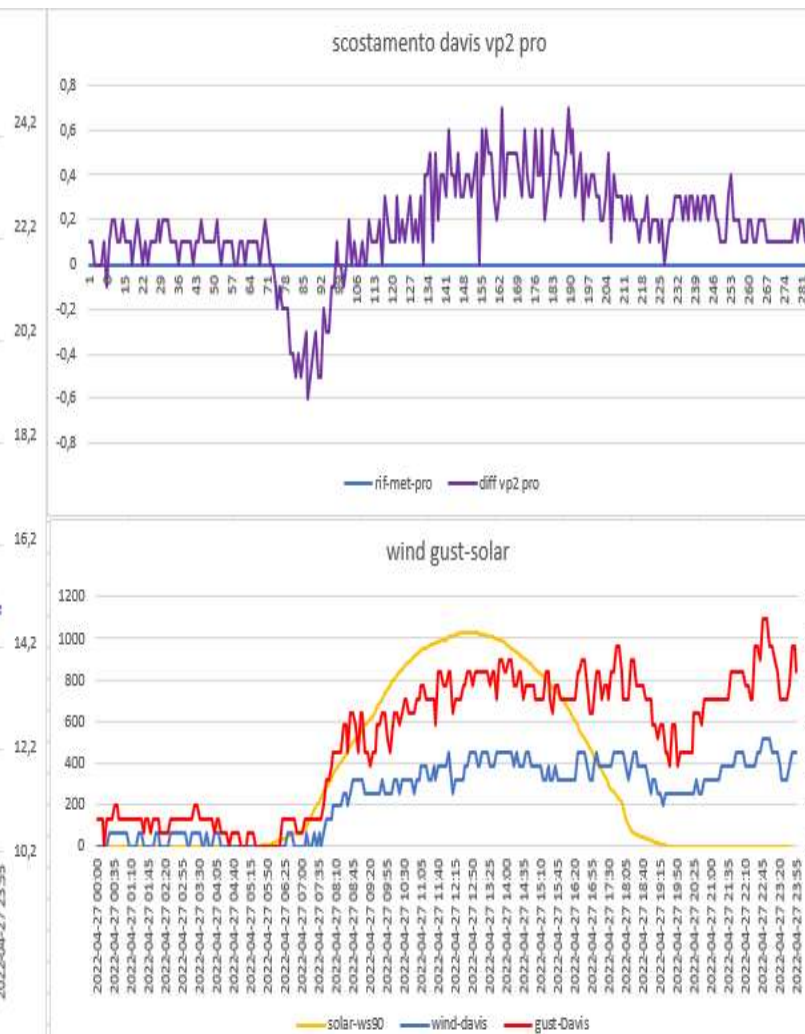
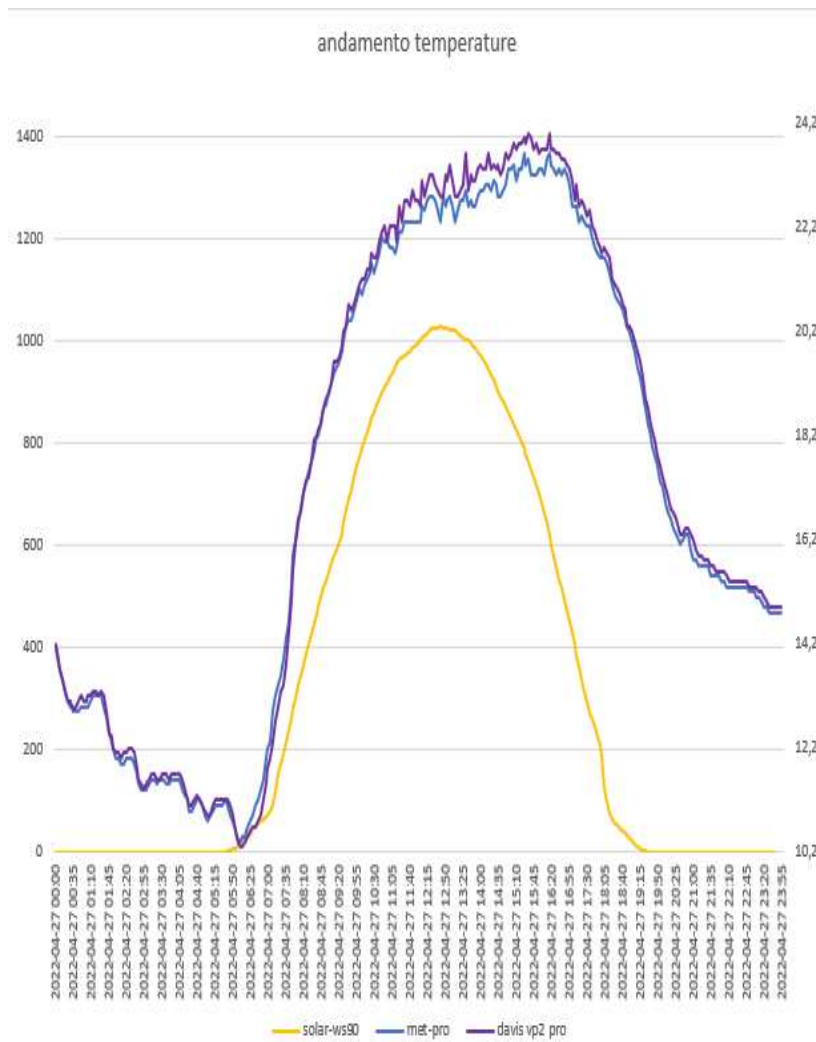
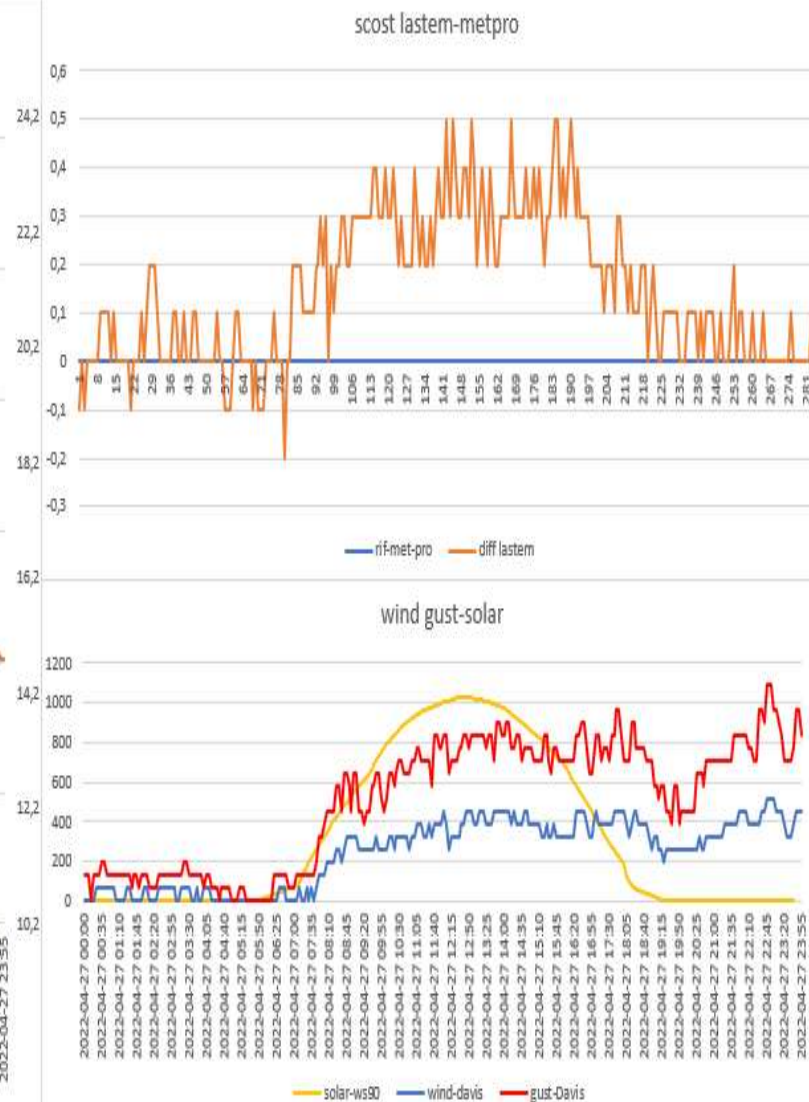
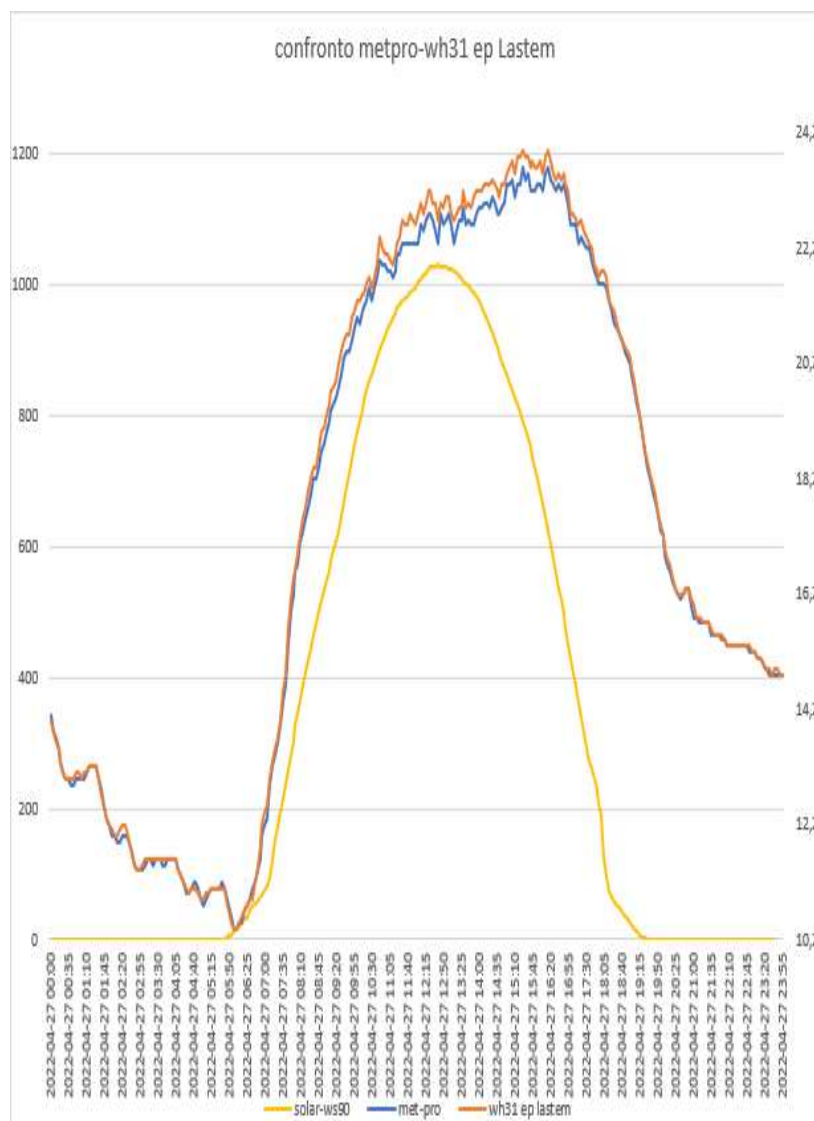


ANDAMENTO SCHERMI DEL 27-04-2022

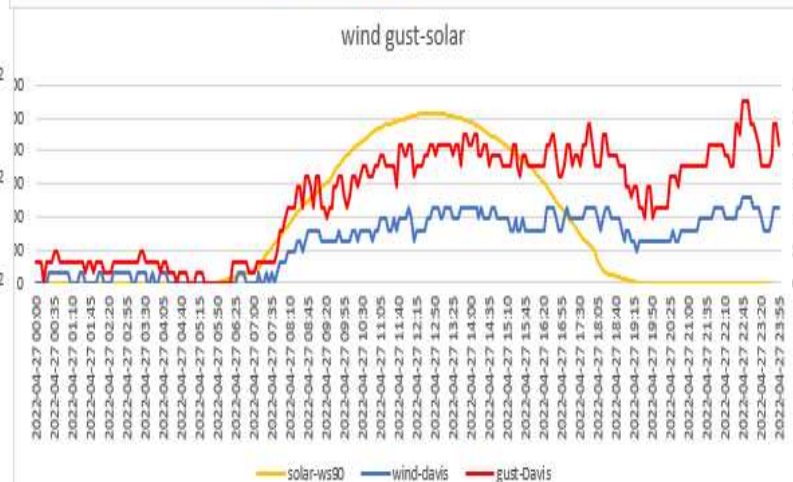
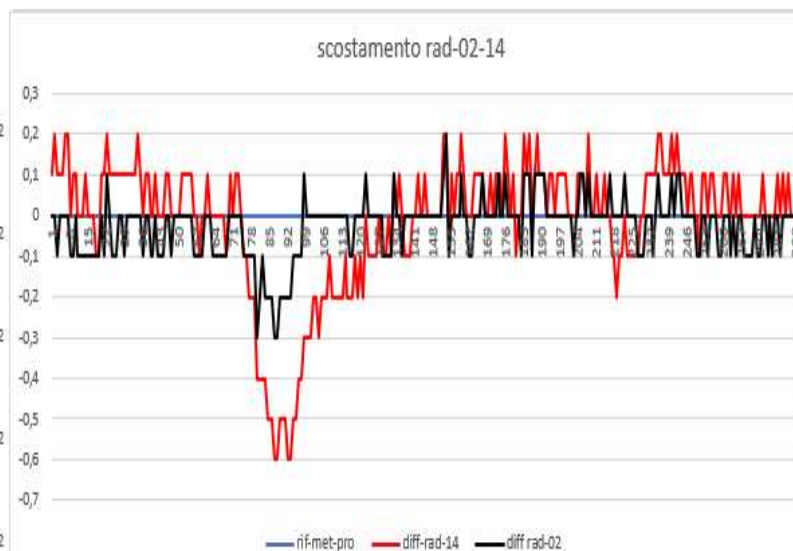
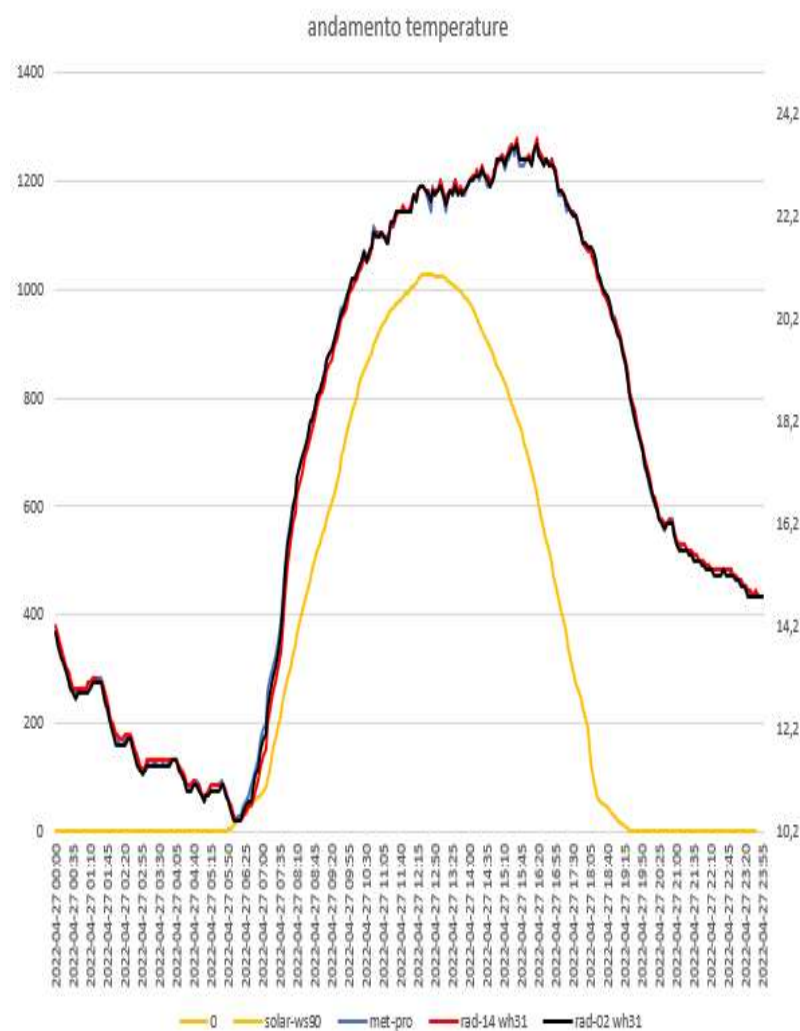
Davis vp2 pro- METEOSHIELD PRO (sensore sonda wh32EP ecowitt)



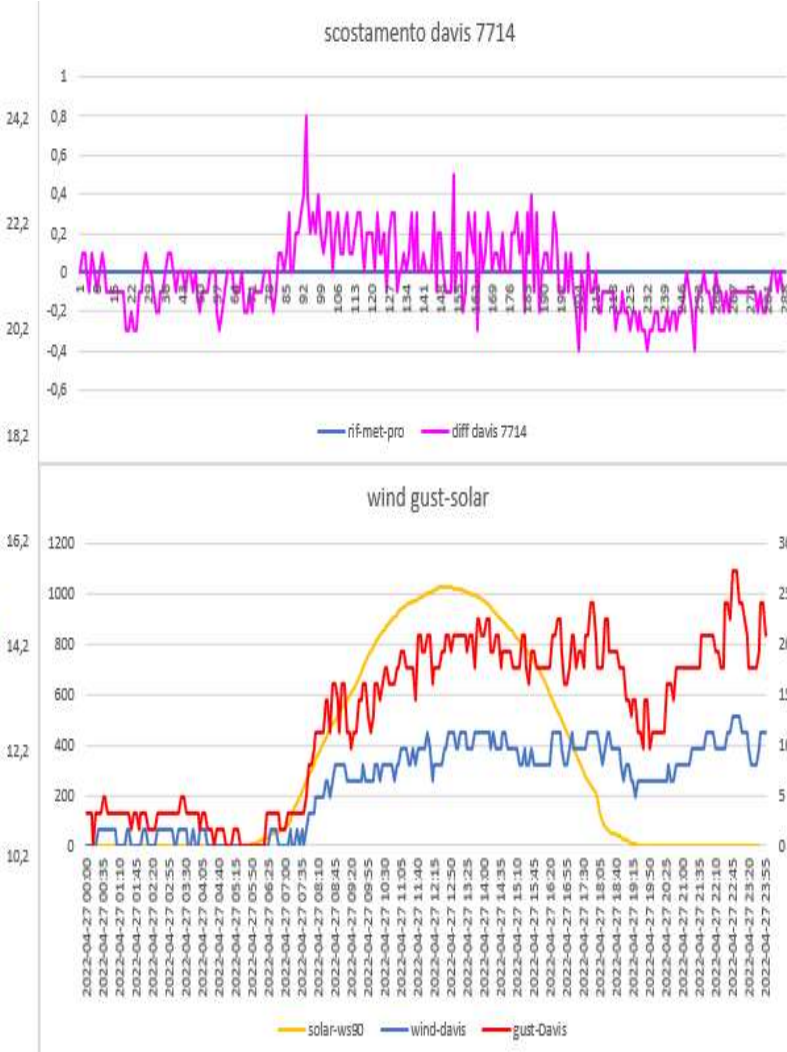
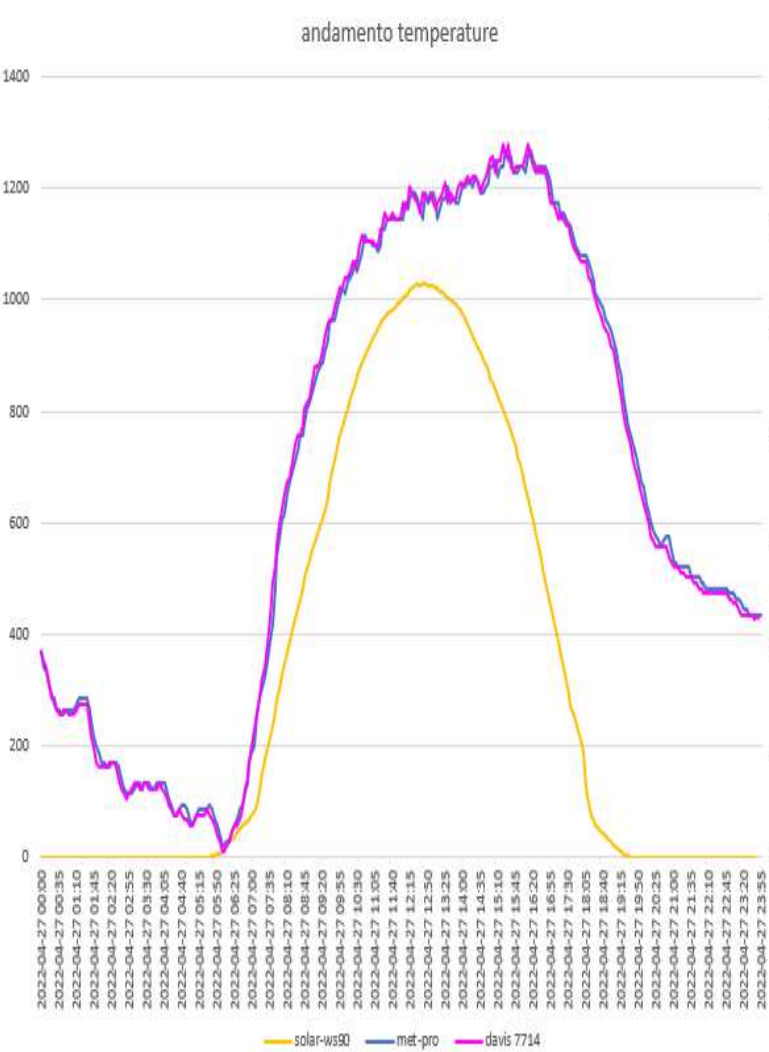
Lsi IASTEM(sensore sonda wh31EP ecowitt) - METEOSHIELD PRO (sensore sonda wh32EP ecowitt)



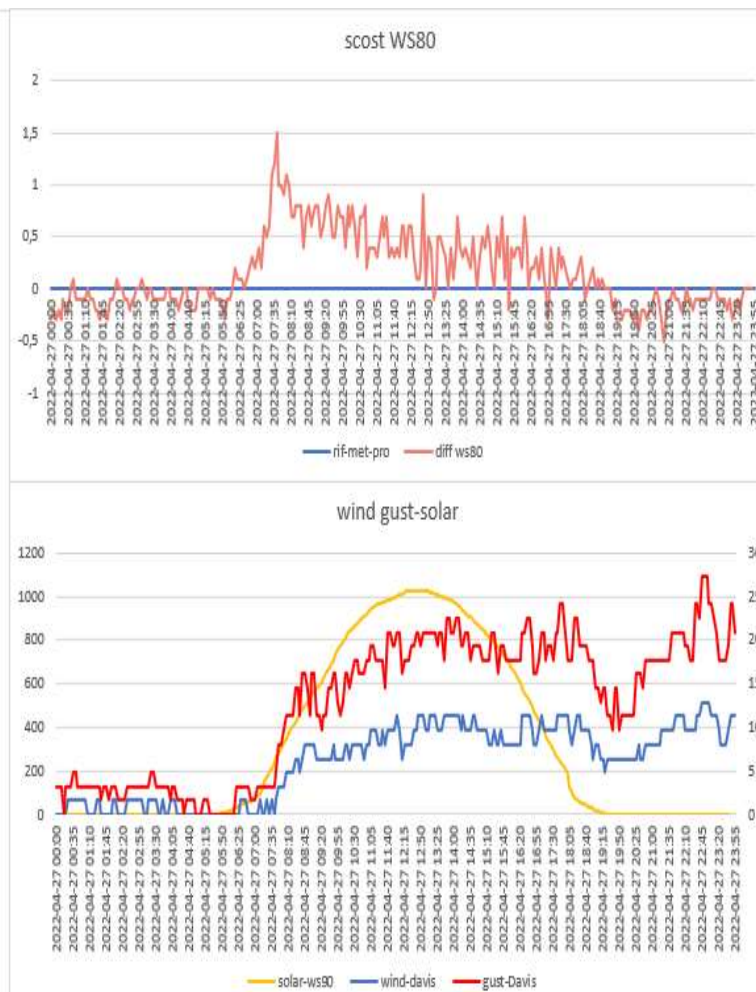
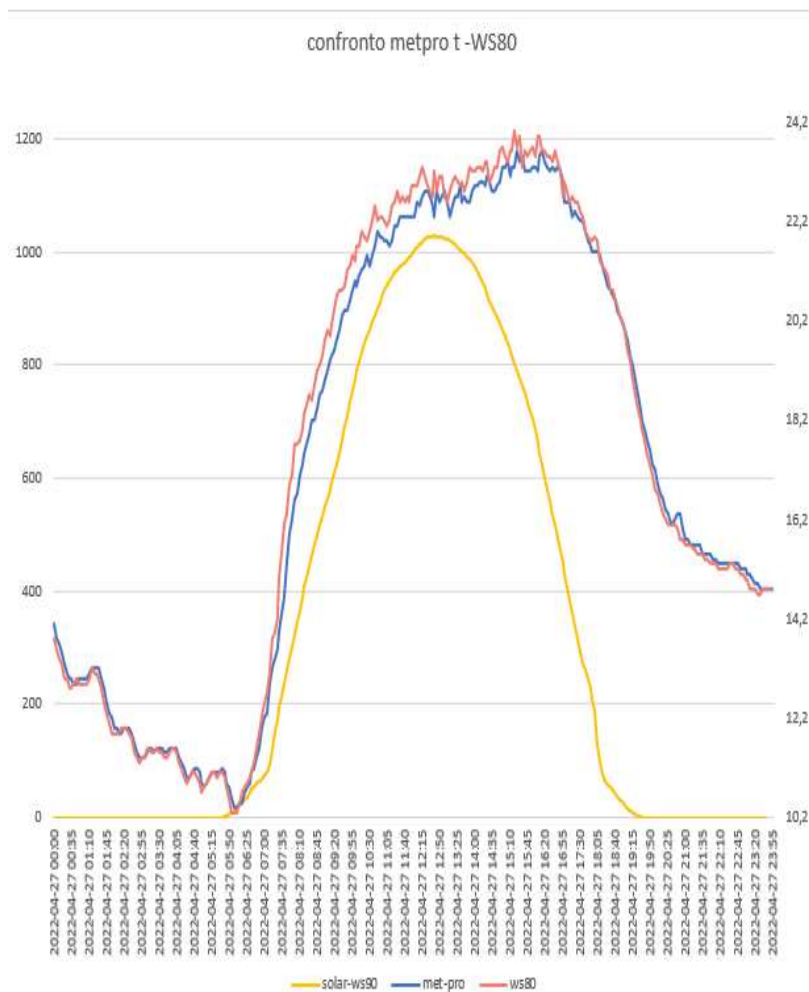
RAD-02-14(sensore sonda WH31EP ecowitt) – METEOSHIELD PRO (sensore sonda wh32EP ecowitt)



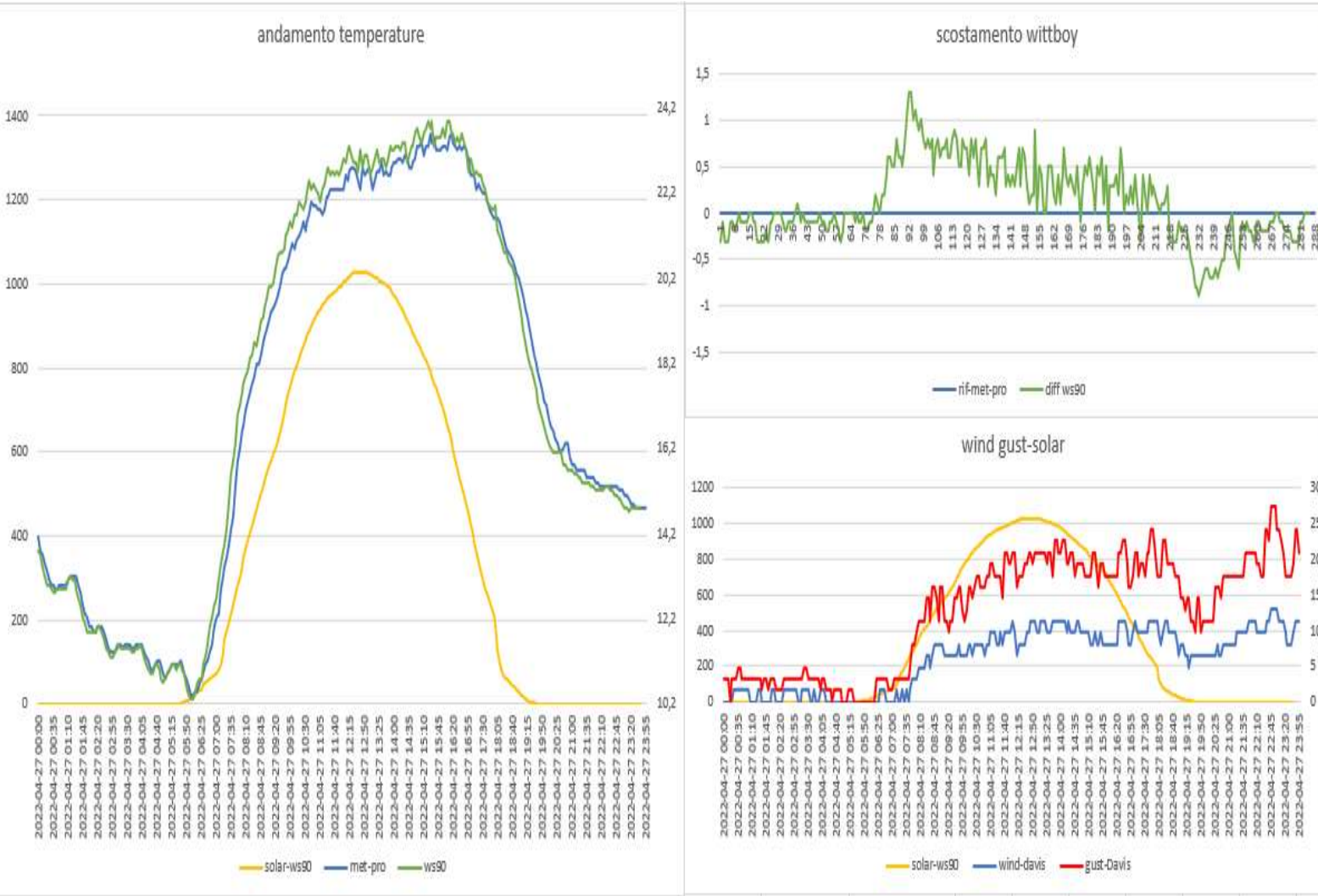
DAVIS 7714(sensore sonda wh31EP ecowit)-METEOSHIELD PRO (sensore sonda wh32EP ecowitt)



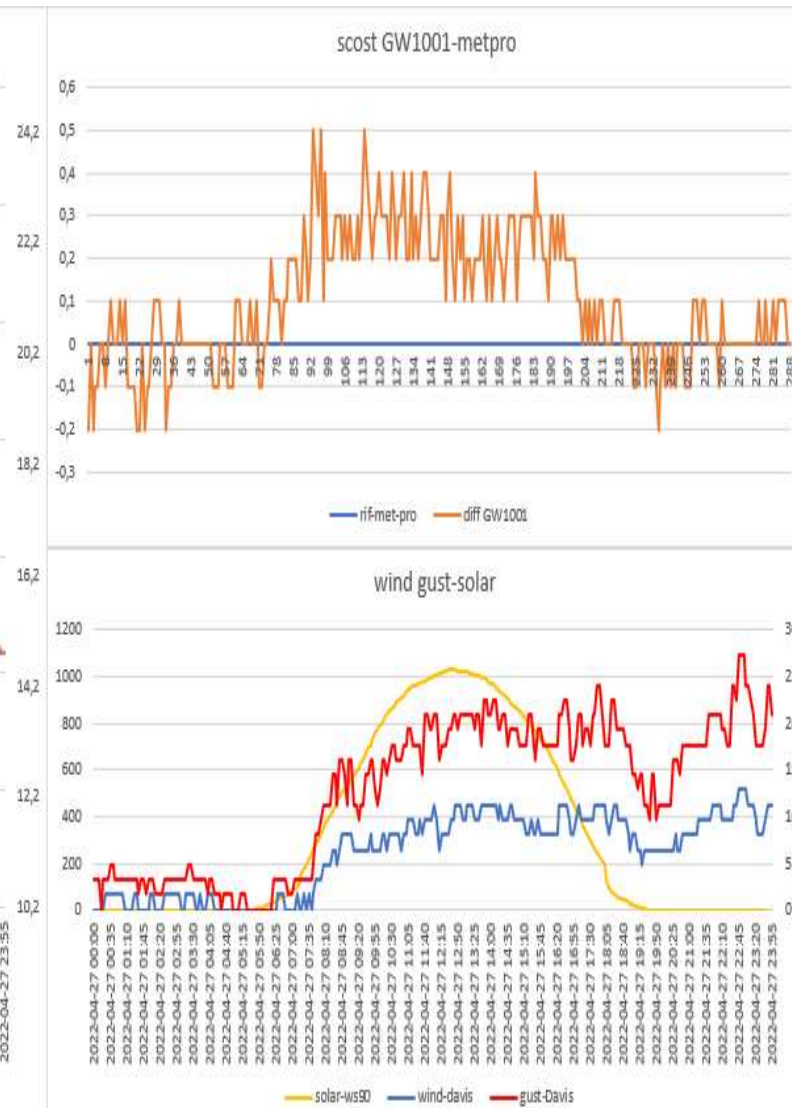
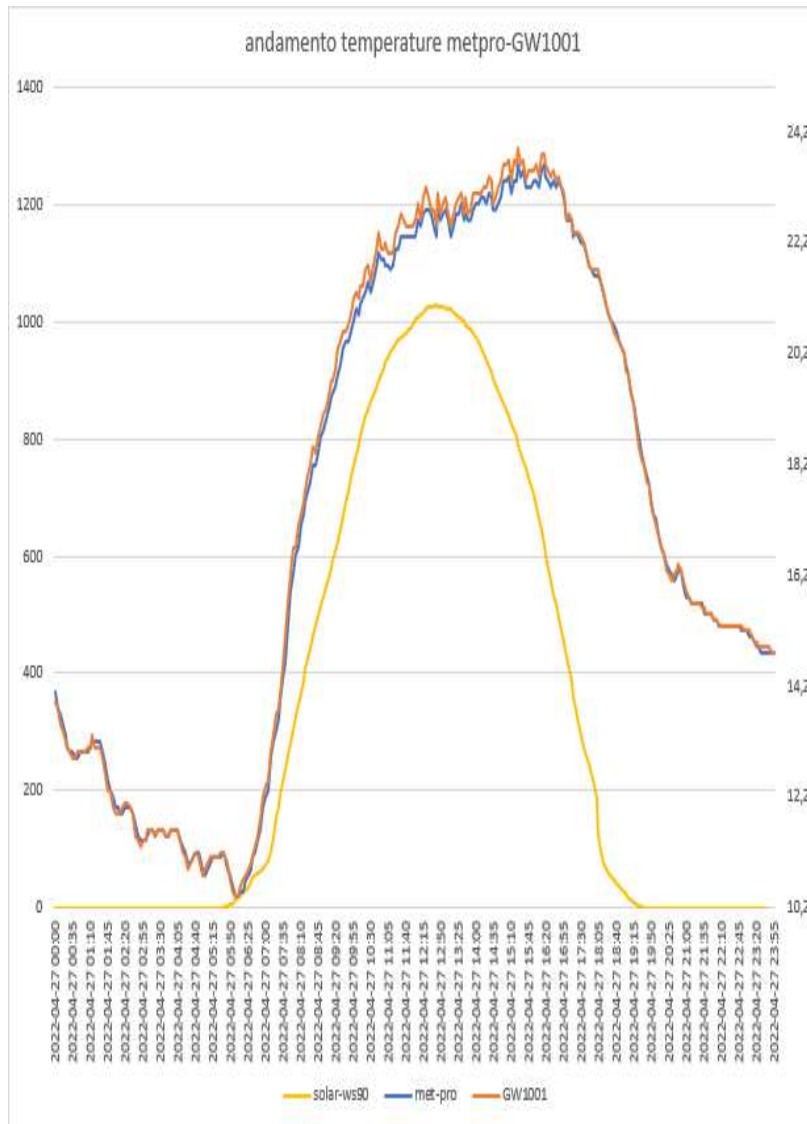
WS80 ecowitt- METEOSHIELD PRO (sensore sonda wh32EP ecowitt)



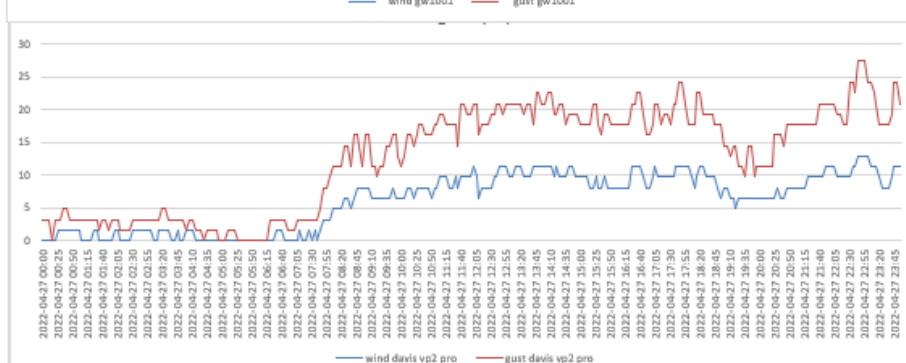
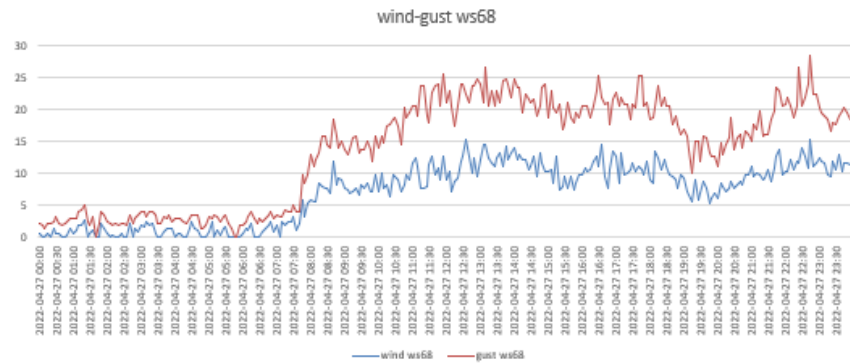
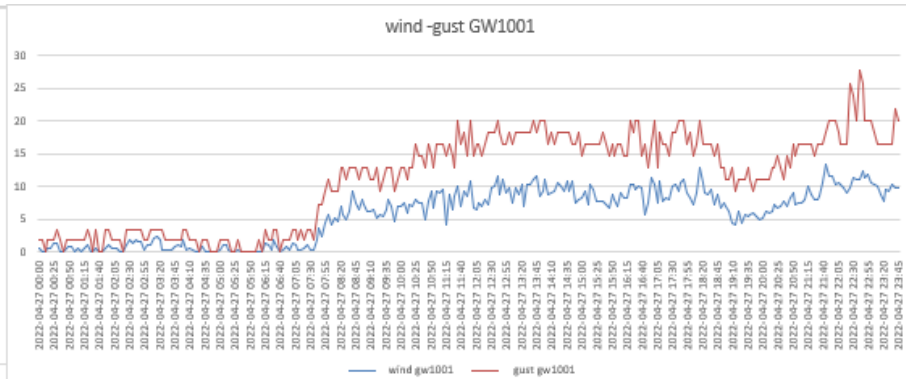
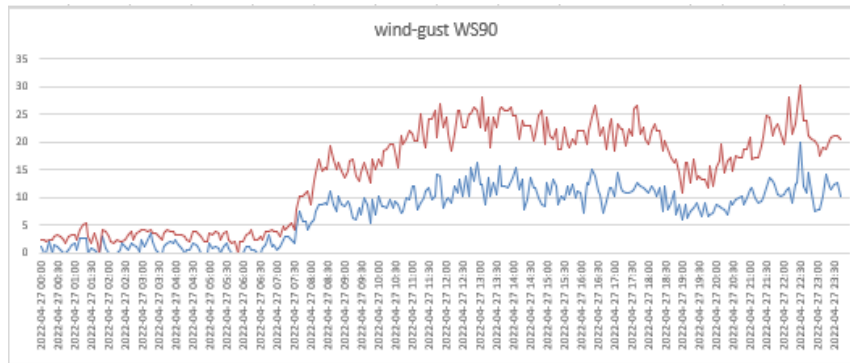
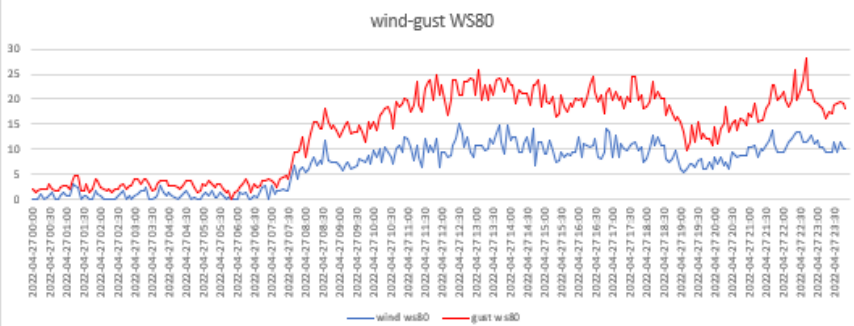
WITTBOY ecowit- METEOSHIELD PRO (sensore sonda wh32EP ecowitt)



GW1001 ecowitt-METEOSHIELD PRO (sensore sonda wh32EP ecowitt)



CONFRONTO ANEMOMETRI

[illegible]

DATI STATISTICI (MEDIE MASSIME MINIME)

vento medio 24H	6,123263889	km/h	vento medio ore di sole	7,381197								
media met pro	17,36284722											
max met pro	23,6											
min met pro	10,4											
media GW1001	17,46527778		scost medio GW1001	0,103147								
max GW1001	23,9		scost max GW1001	0,5								
minima GW1001	10,4		scost min GW1001	-0,2								
media davis vp2 pro	17,35400697		scost medio davis vp2 pro	0,165385								
max davis vp2pro	23,7		scost max davis vp2 pro	0,7								
min davis vp2 pro	10,3		scost min davis vp2 pro	-0,6								
media rad-14	17,34722222		scost medio rad-14	-0,02727								
max rad-14	23,7		scost max rad-14	0,2								
min rad-14	10,4		scost min rad-14	-0,3								
media rad-02	17,33576389		scost medio rad-02	-0,02708								
max rad-02	23,6		scost max rad-02	0,2								
min rad-02	10,4		scost min rad-02	-0,3								
media lastem	17,509375		scost medio lastem	0,147552		media WS80	17,52996516		scost medio WS80	0,15819		
max lastem	23,9		scost max lastem	0,5		max WS80	24		scost max WS80	1,5		
min lastem	10,4		scost min lastem	-0,2		min WS80	10,3		scost min WS80	-0,5		
media davis 7714	17,35400697		scost medio davis 7714	-0,01777		media ws90	17,50947368		scost medio ws90	0,11965		
max davis 7714	23,7		scost max davis 7714	0,8		max ws90	23,9		scost max ws90	1,3		
min davis 7714	10,3		scost min davis 7714	-0,4		min ws90	10,3		scost min ws90	-0,9		