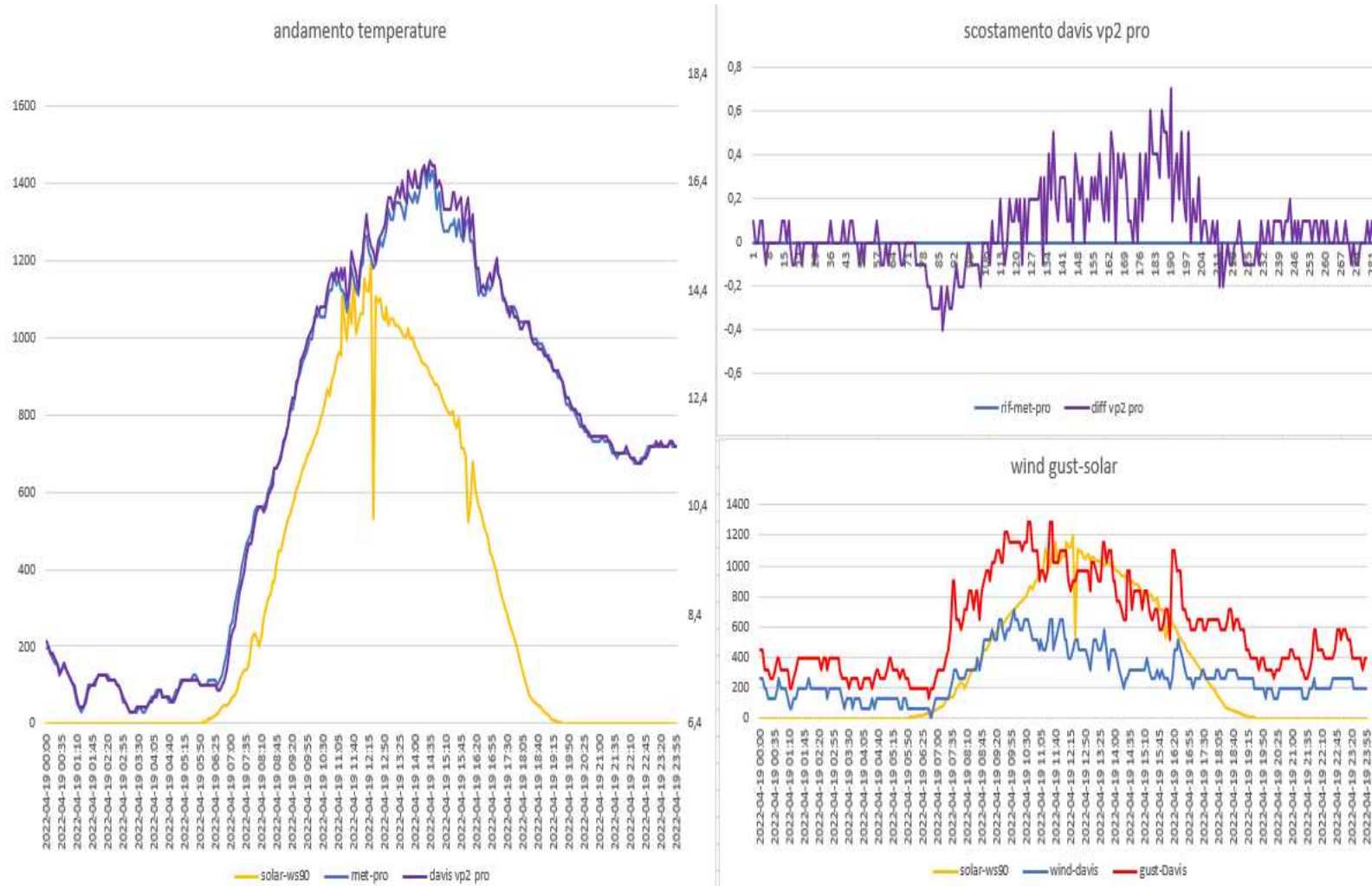
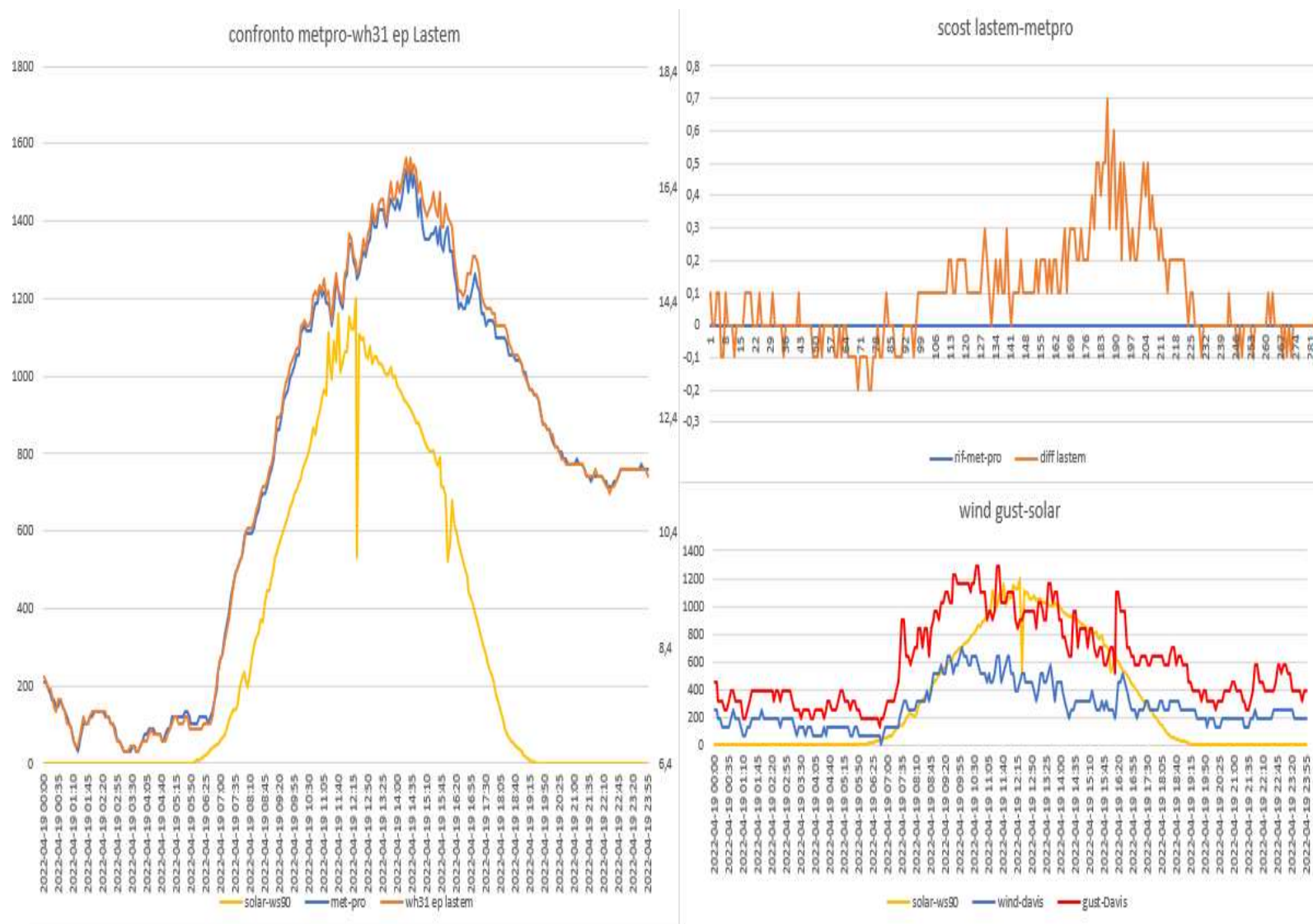


ANDAMENTO SCHERMI DEL 16-04-2022

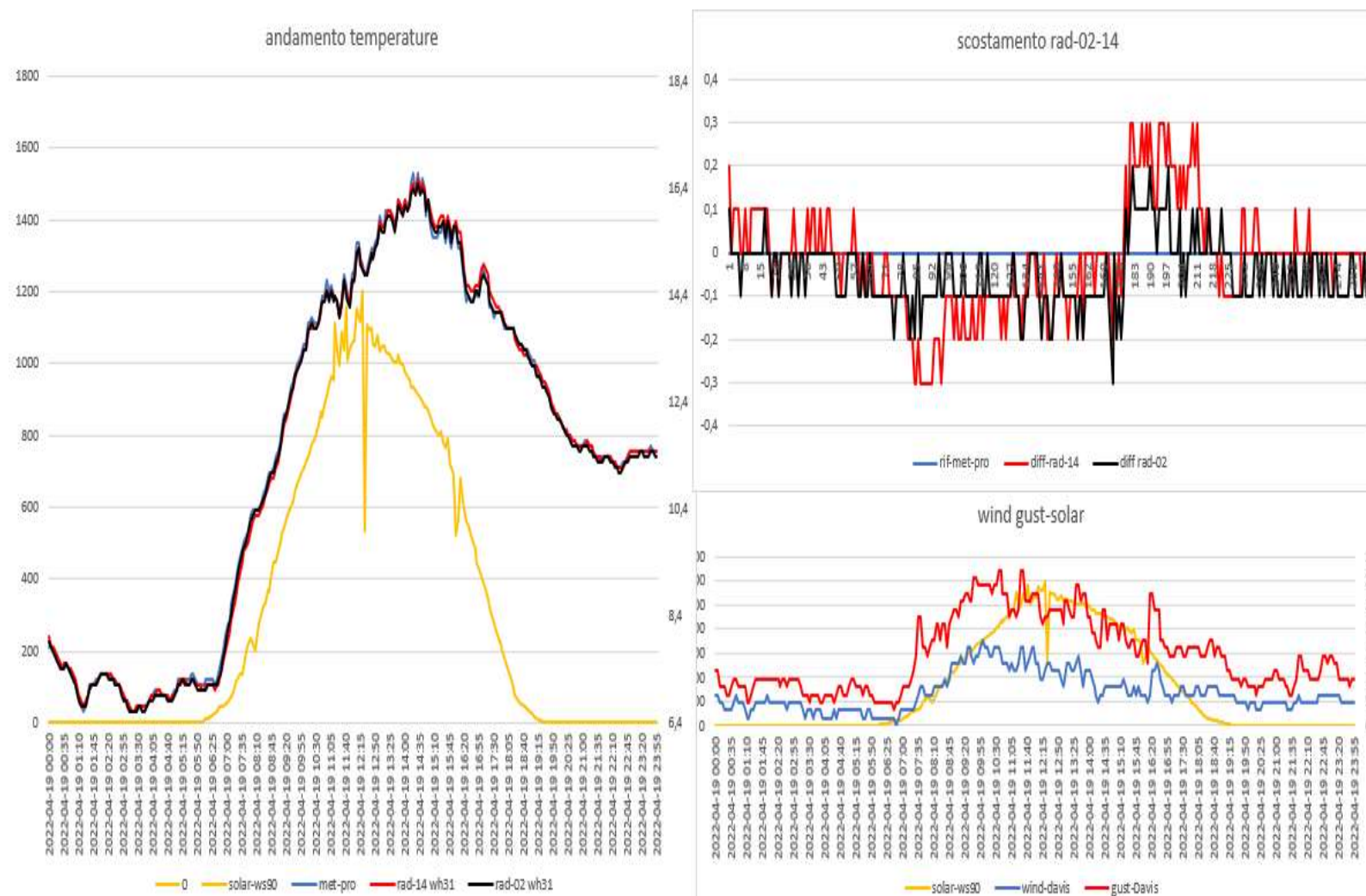
Davis vp2 pro- METEOSHIELD PRO (sensore sonda wh32EP ecowitt)



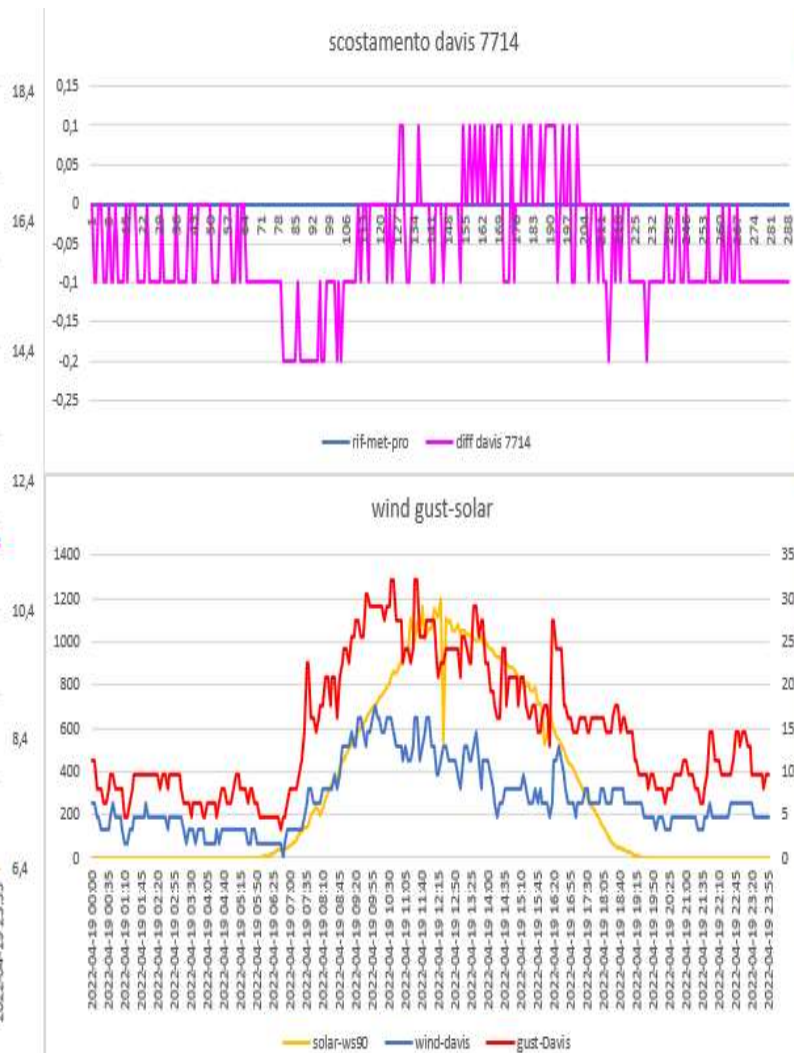
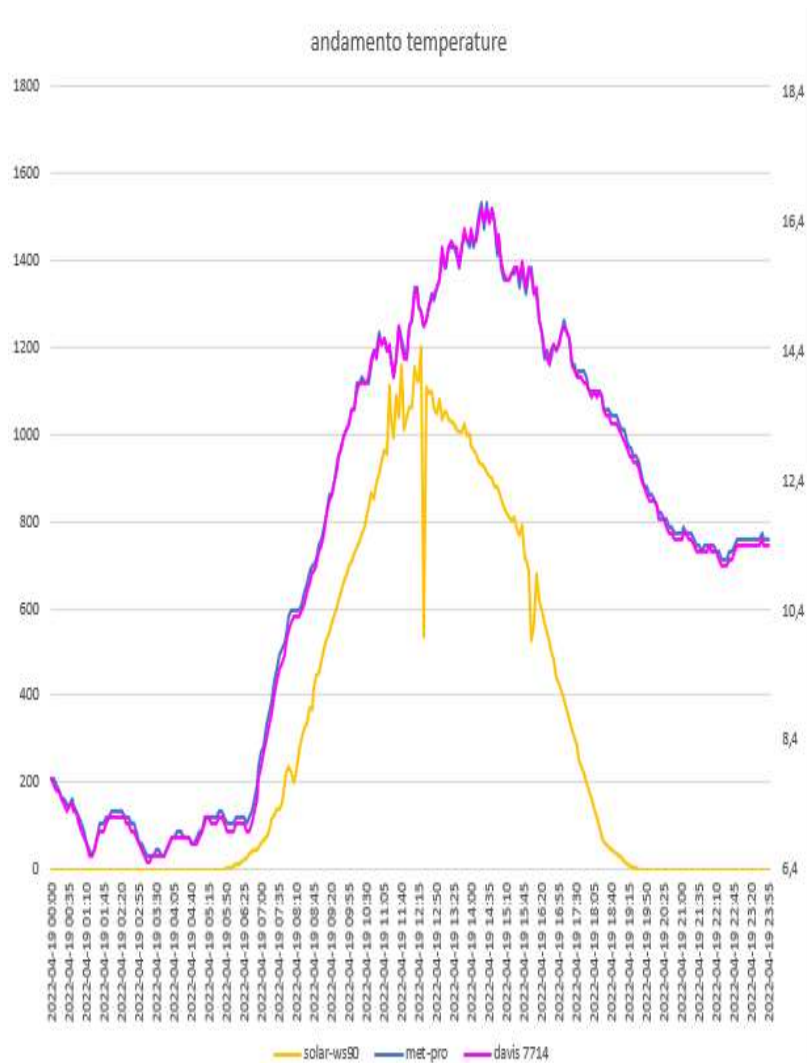
Lsi IASTEM(sensore sonda wh31EP ecowitt) - METEOSHIELD PRO (sensore sonda wh32EP ecowitt)



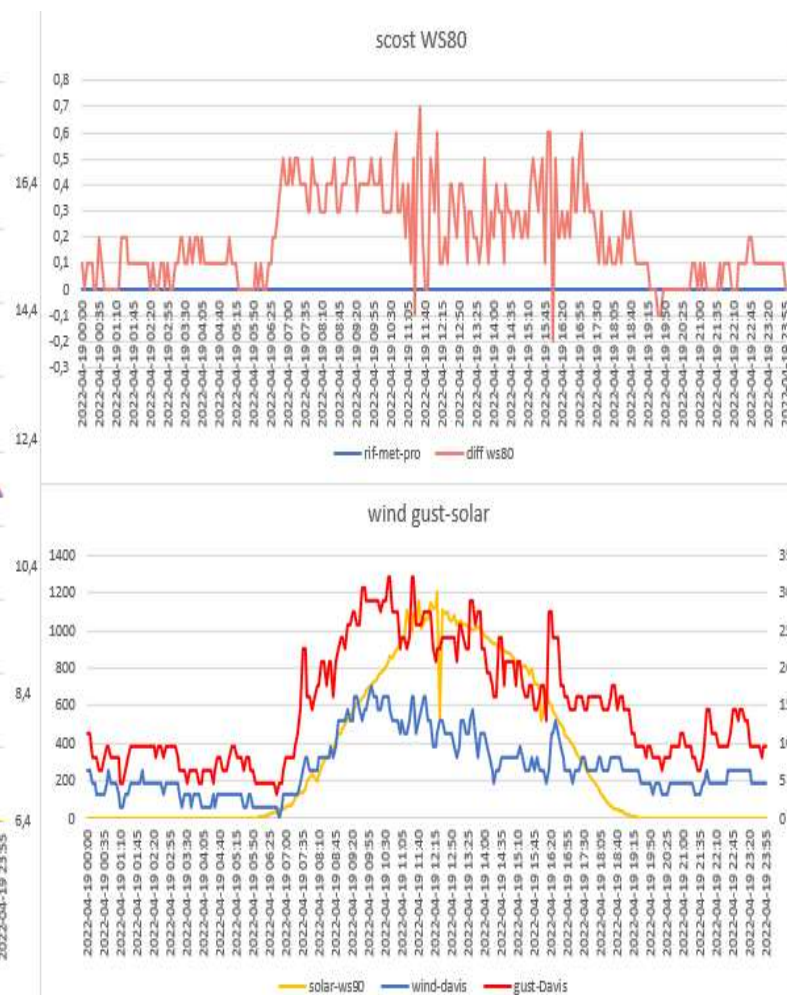
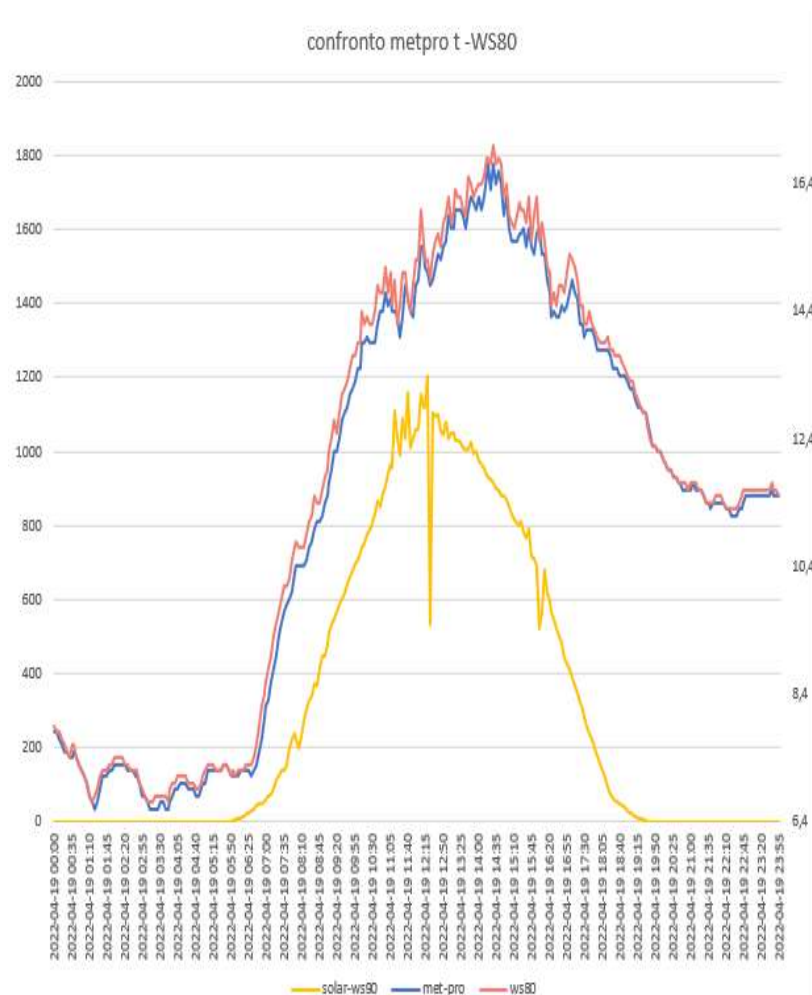
RAD-02-14(sensore sonda WH31EP ecowitt) – METEOSHIELD PRO (sensore sonda wh32EP ecowitt)



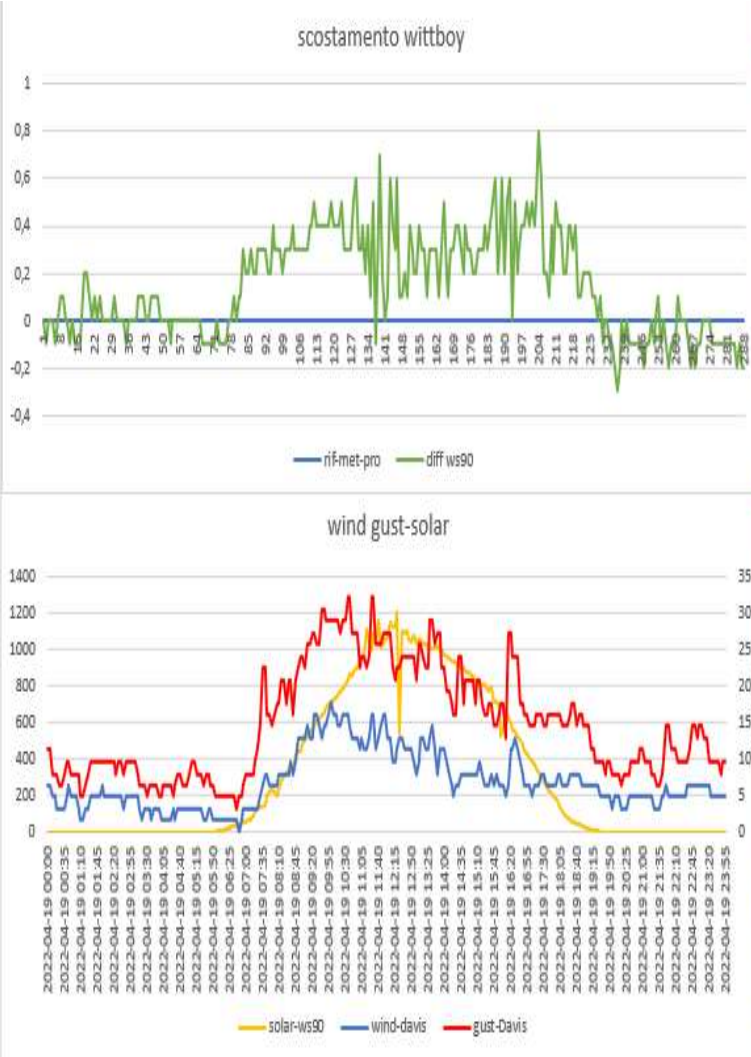
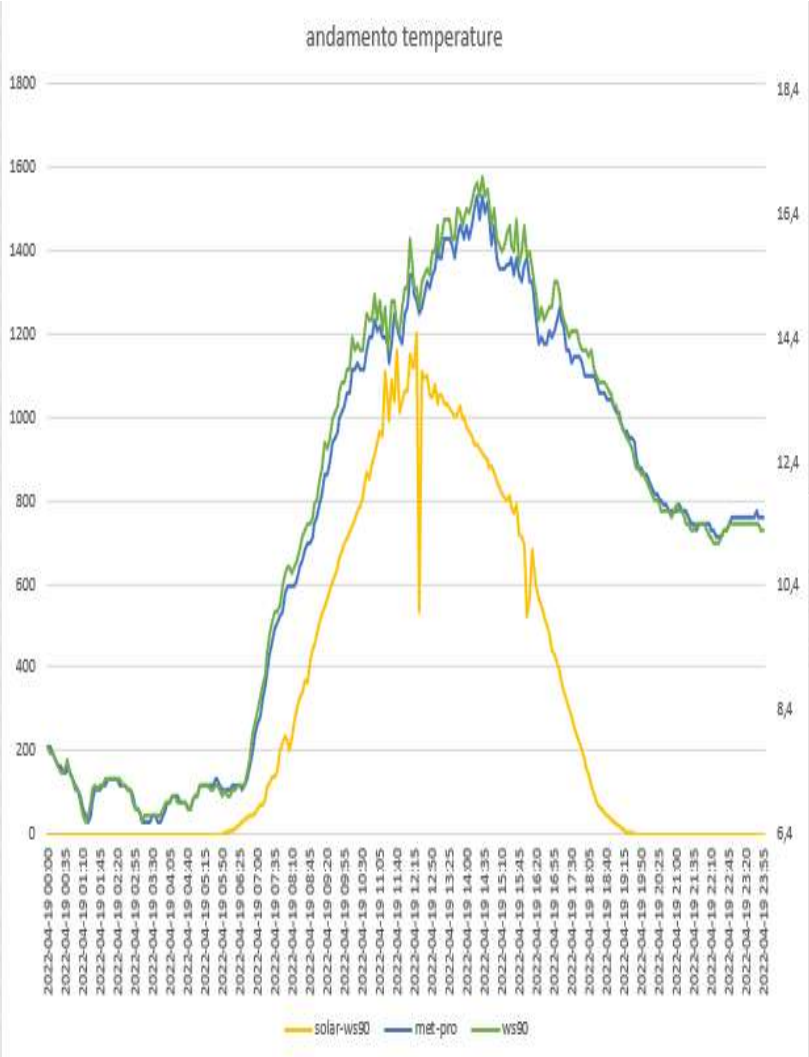
DAVIS 7714(sensore sonda wh31EP ecowitt)-METEOSHIELD PRO (sensore sonda wh32EP ecowitt)



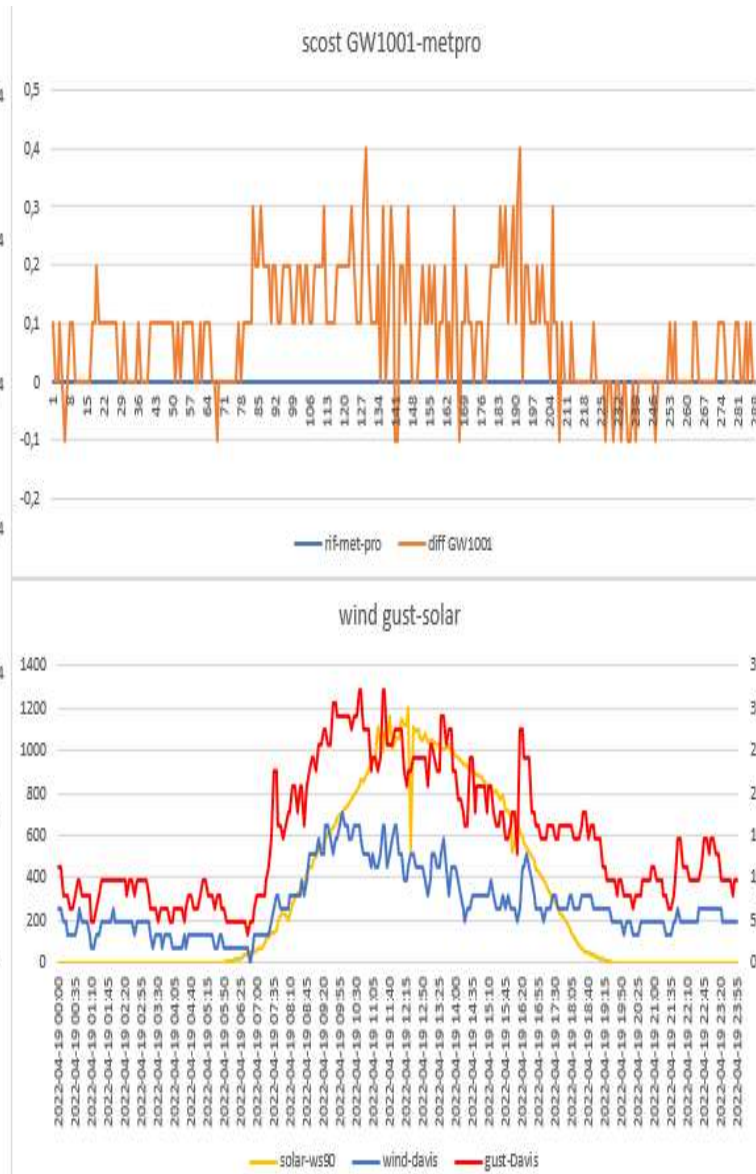
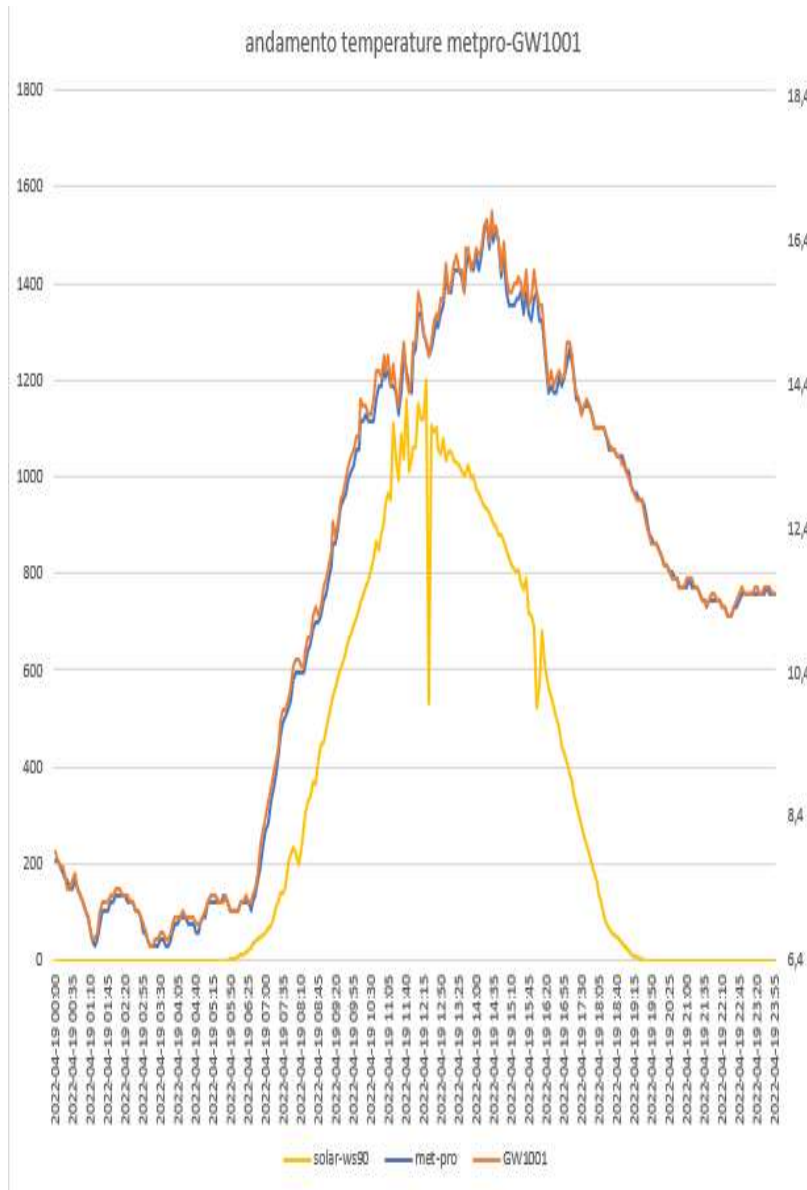
WS80 ecowitt- METEOSHIELD PRO (sensore sonda wh32EP ecowitt)



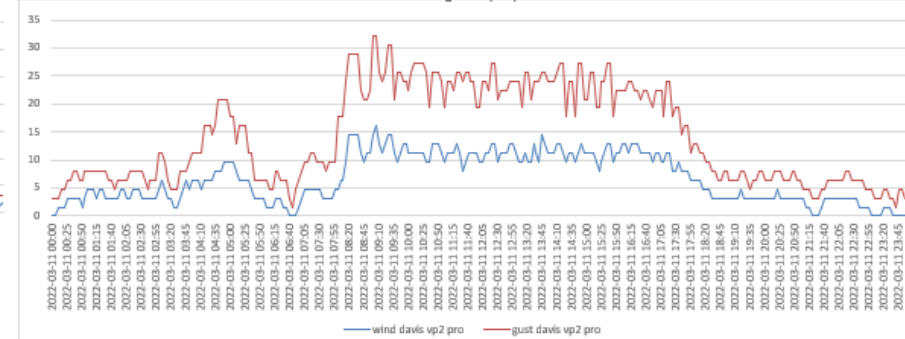
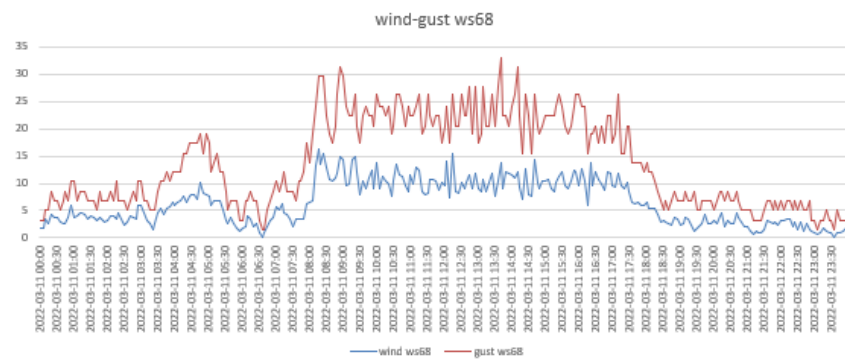
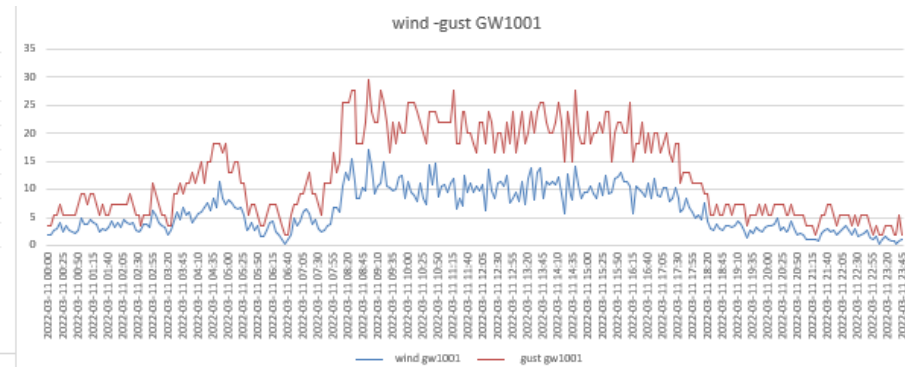
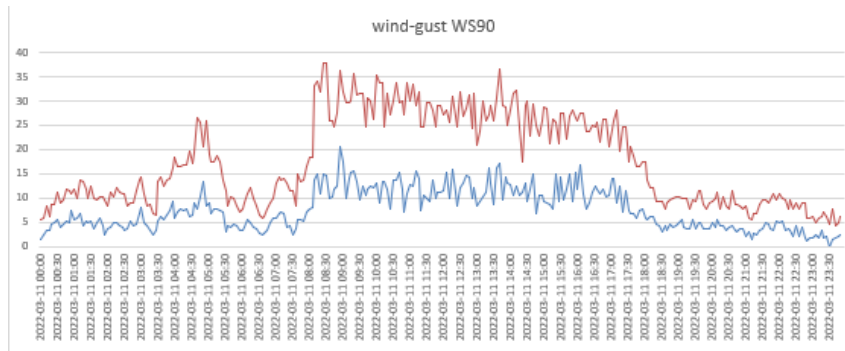
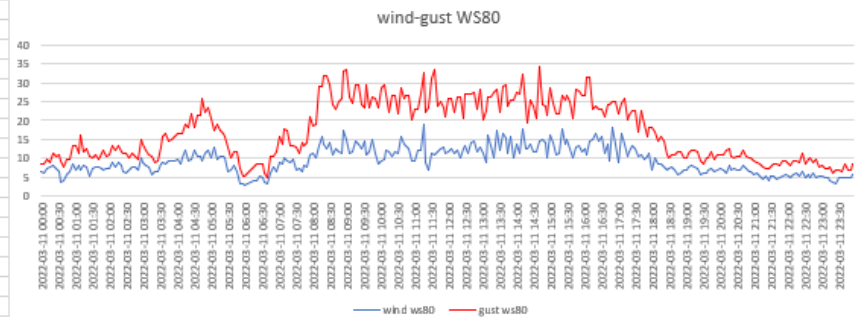
WITTBOY ecowit- METEOSHIELD PRO (sensore sonda wh32EP ecowitt)



GW1001 ecowitt-METEOSHIELD PRO (sensore sonda wh32EP ecowitt)



CONFRONTO ANEMOMETRI

[illegible]

DATI STATISTICI (MEDIE MASSIME MINIME)

vento medio 24H	6,896527778	km/h	vento medio ore di sole	9,9290598								
media met pro	11,46666667											
max met pro	16,7											
min met pro	6,6											
media GW1001	11,54756944		scost medio GW1001	0,0814685								
max GW1001	16,8		scost max GW1001	0,4								
minima GW1001	6,6		scost min GW1001	-0,1								
media davis vp2 pro	11,41111111		scost medio davis vp2 pro	0,0590909								
max davis vp2pro	16,6		scost max davis vp2 pro	0,7								
min davis vp2 pro	6,5		scost min davis vp2 pro	-0,4								
media rad-14	11,45		scost medio rad-14	-0,047902								
max rad-14	16,6		scost max rad-14	0,2								
min rad-14	6,6		scost min rad-14	-0,3								
media rad-02	11,41840278		scost medio rad-02	-0,048264								
max rad-02	16,5		scost max rad-02	0,2								
min rad-02	6,6		scost min rad-02	-0,3								
media lastem	11,55069444		scost medio lastem	0,084965		media WS80	11,66284722		scost medio WS80	0,196181		
max lastem	16,9		scost max lastem	0,7		max WS80	17		scost max WS80	0,7		
min lastem	6,6		scost min lastem	-0,2		min WS80	6,7		scost min WS80	-0,2		
media davis 7714	11,41111111		scost medio davis 7714	-0,055556		media ws90	11,61041667		scost medio ws90	0,14375		
max davis 7714	16,6		scost max davis 7714	0,1		max ws90	17		scost max ws90	0,8		
min davis 7714	6,5		scost min davis 7714	-0,2		min ws90	6,6		scost min ws90	-0,3		