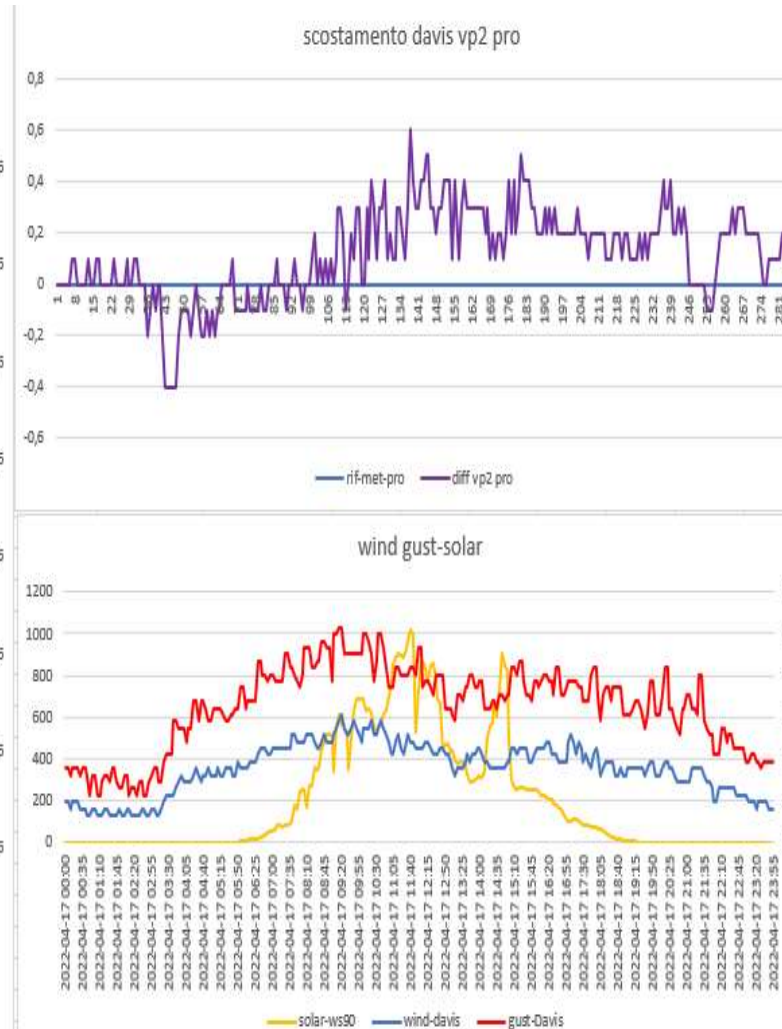
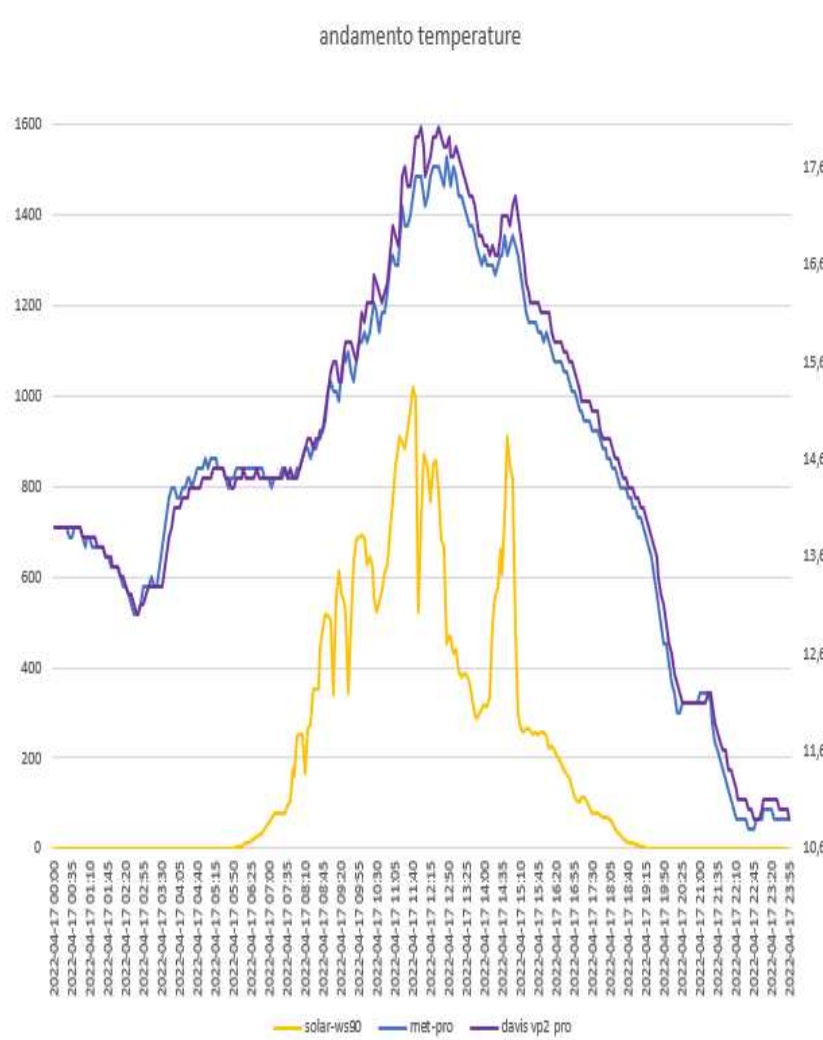
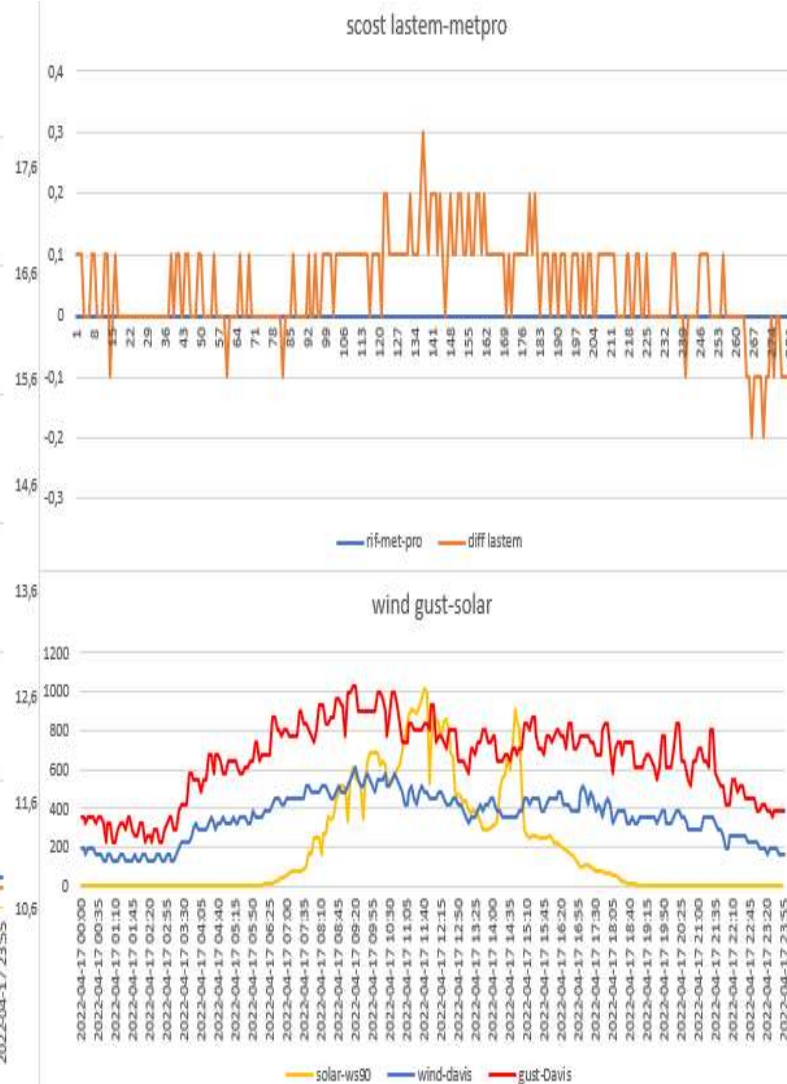
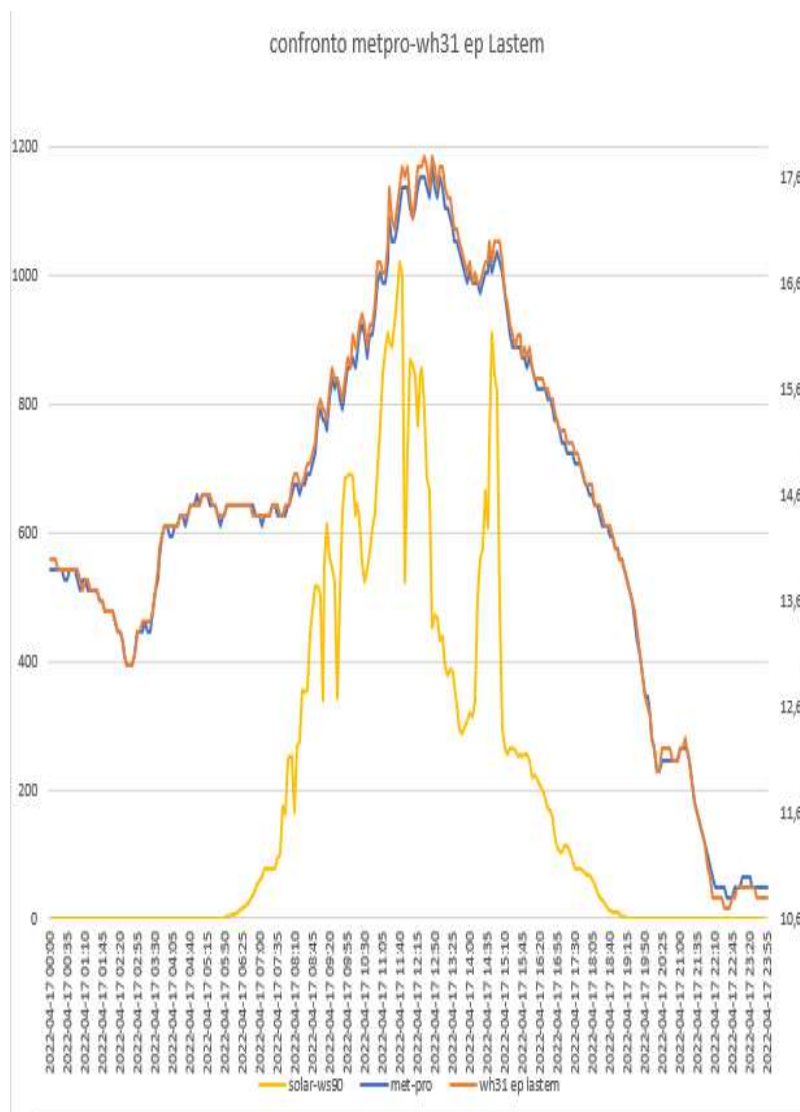


ANDAMENTO SCHERMI DEL 16-04-2022

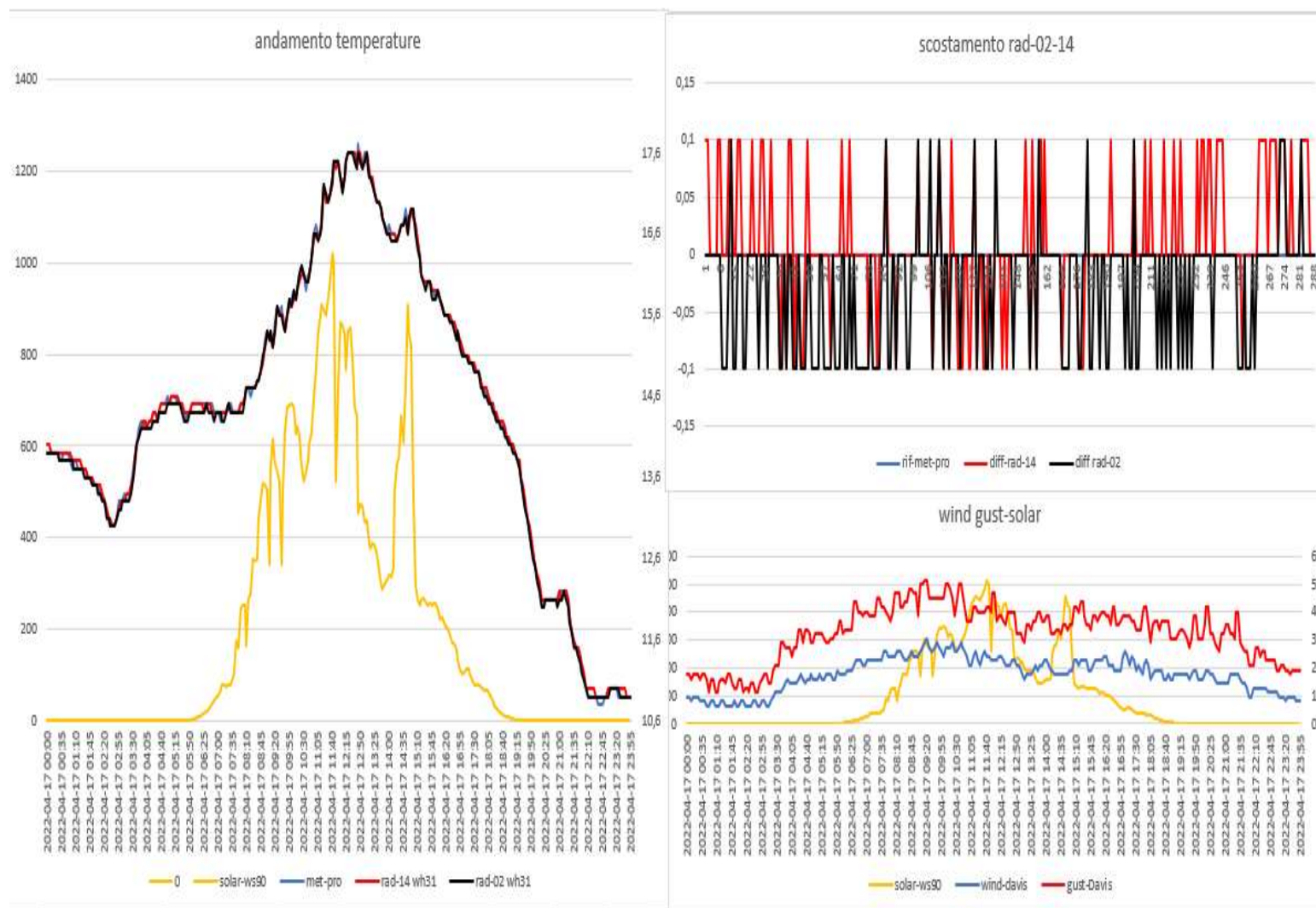
Davis vp2 pro- METEOSHIELD PRO (sensore sonda wh32EP ecowitt)



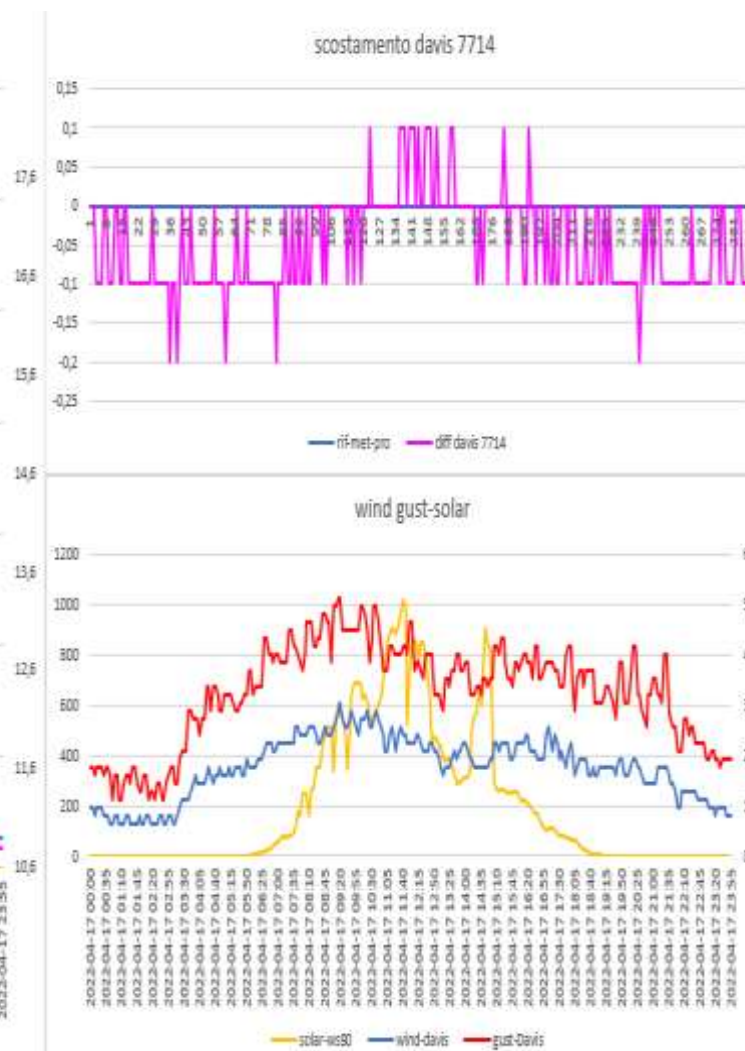
Lsi IASTEM(sensore sonda wh31EP ecowitt) - METEOSHIELD PRO (sensore sonda wh32EP ecowitt)



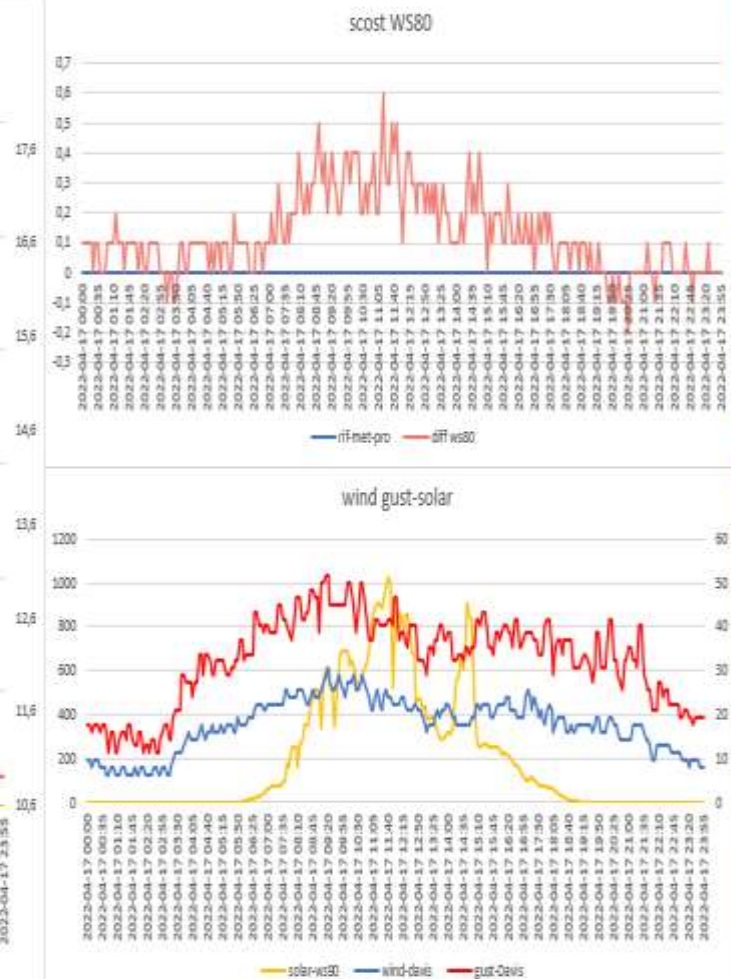
RAD-02-14(sensore sonda WH31EP ecowitt) – METEOSHIELD PRO (sensore sonda wh32EP ecowitt)



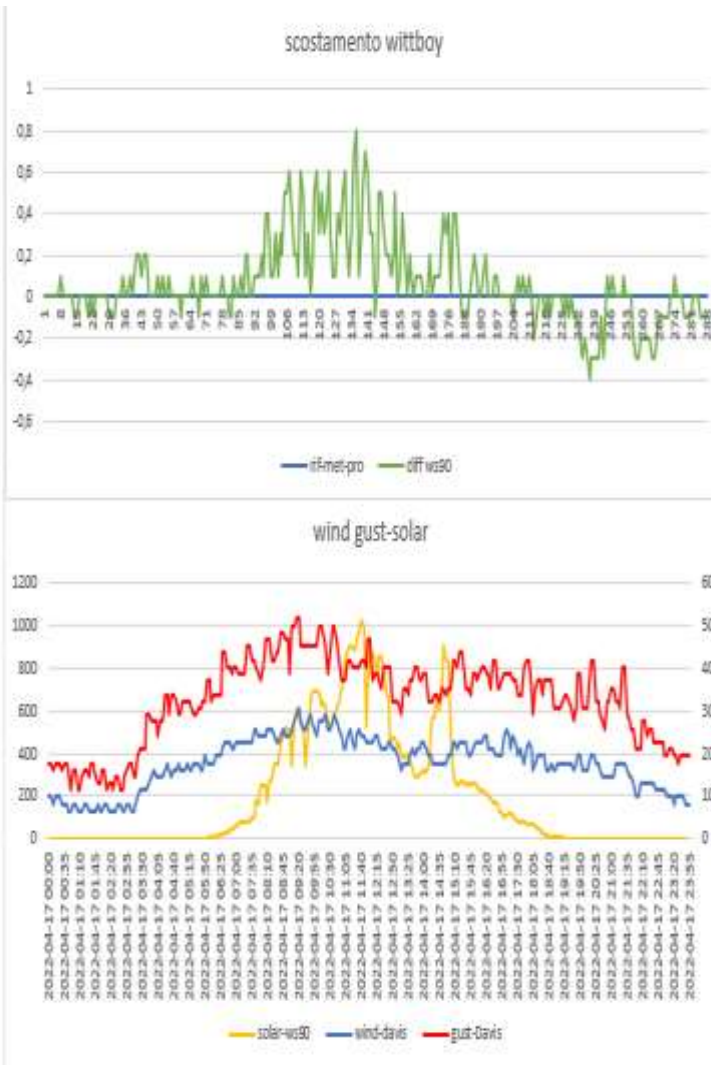
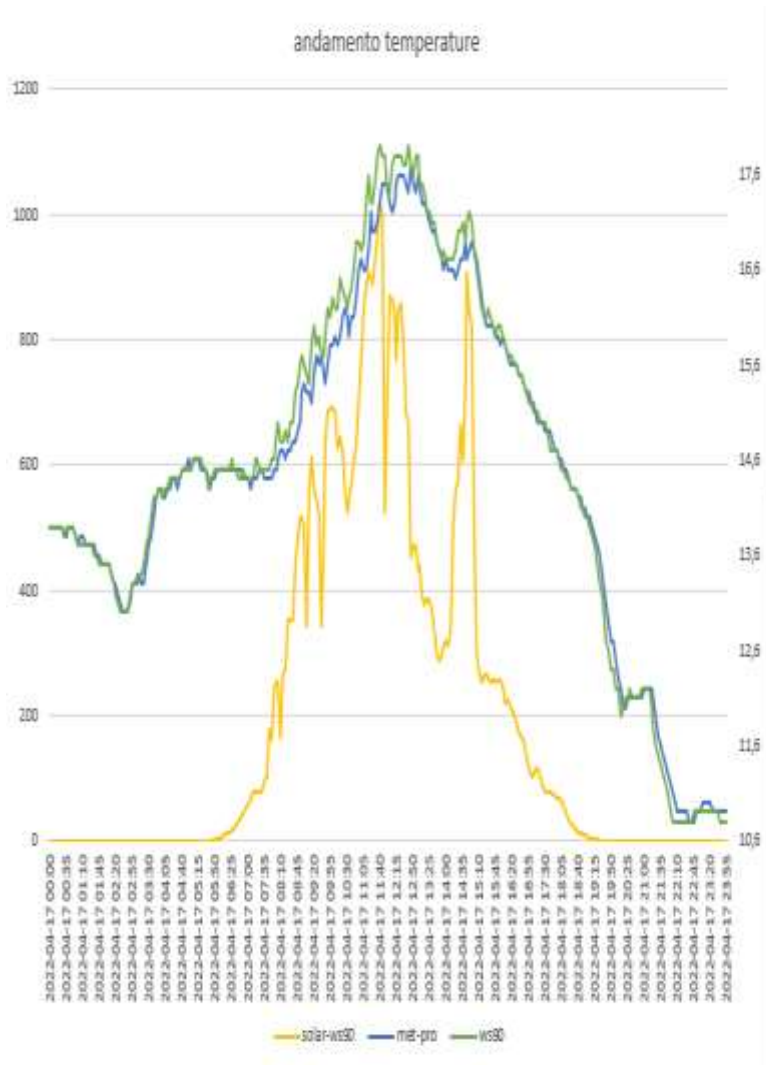
DAVIS 7714(sensore sonda wh31EP ecowit)-METEOSHIELD PRO (sensore sonda wh32EP ecowitt)



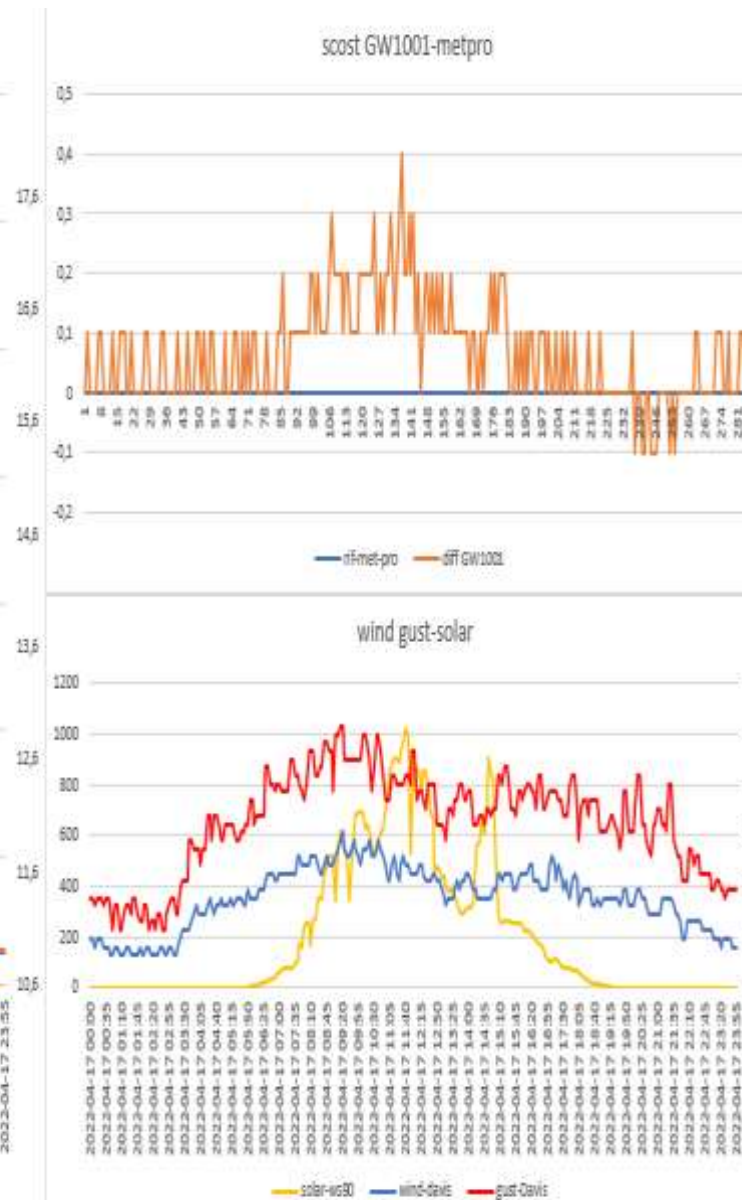
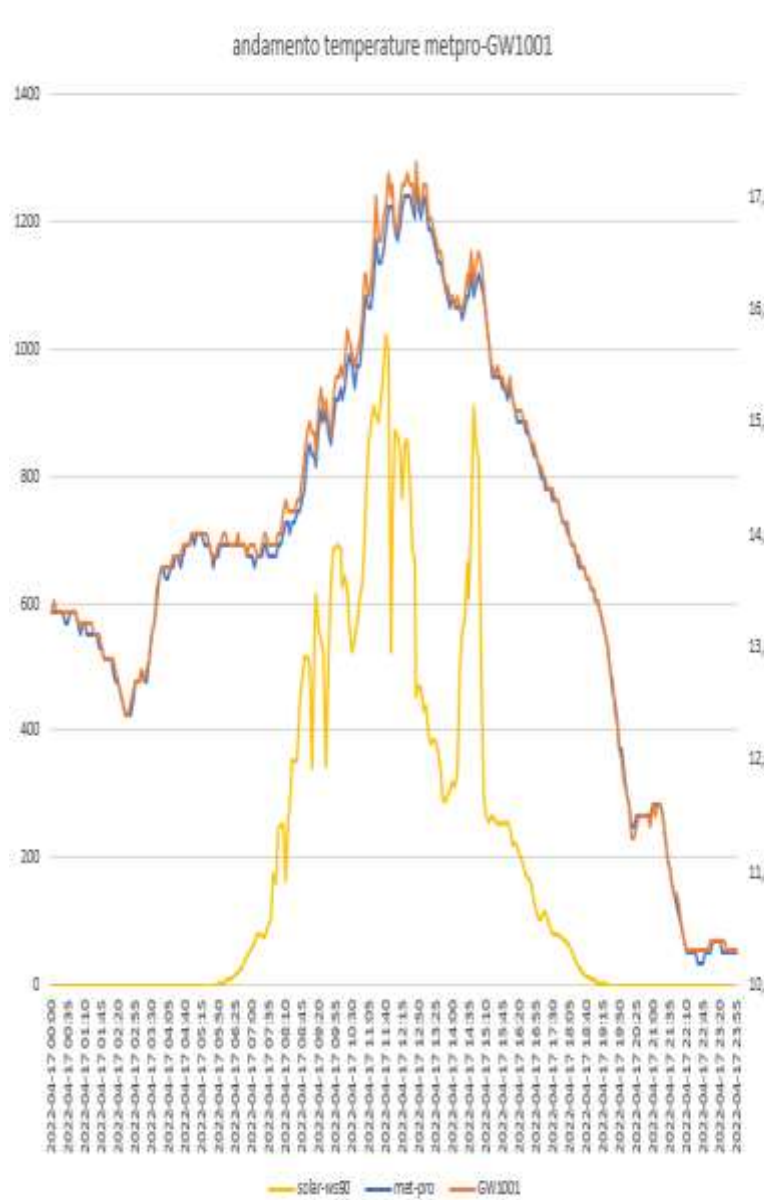
WS80 ecowitt- METEOSHIELD PRO (sensore sonda wh32EP ecowitt)



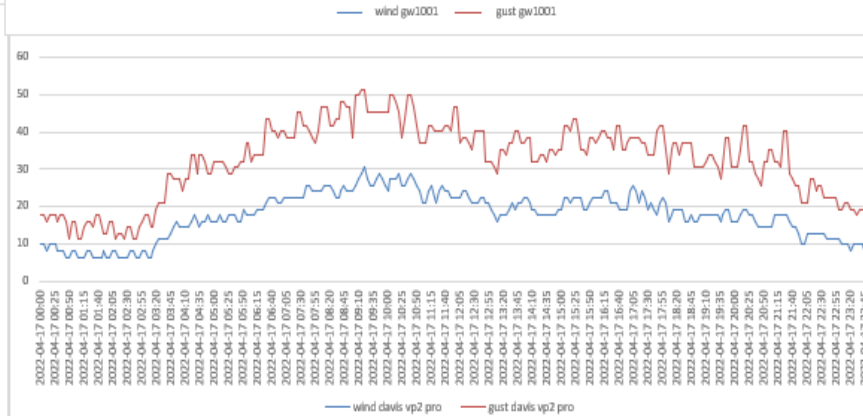
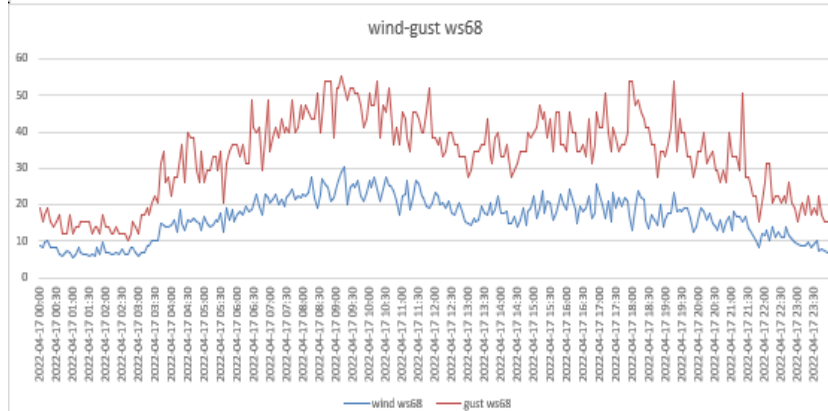
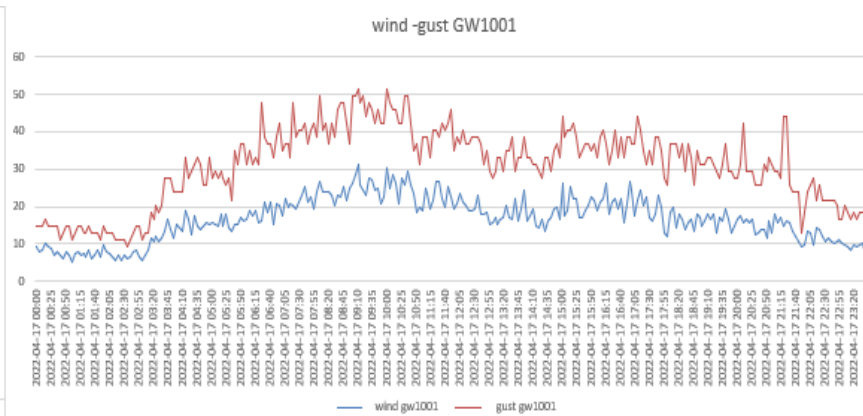
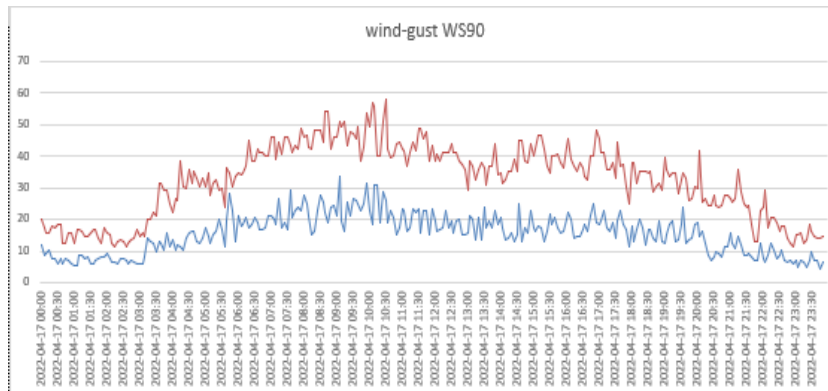
WITTBOY ecowit- METEOSHIELD PRO (sensore sonda wh32EP ecowitt)



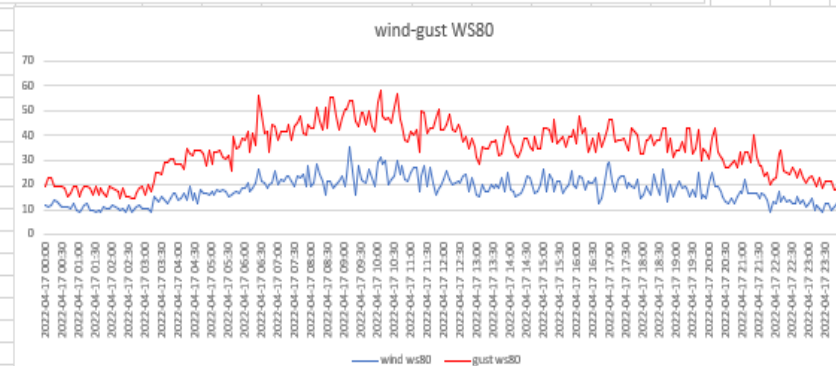
GW1001 ecowitt-METEOSHIELD PRO (sensore sonda wh32EP ecowitt)



CONFRONTO ANEMOMETRI



media wind ws80	18	raffica max ws80	58	km/h
media gust ws80	34	vento max ws80	35,6	km/h
media wind ws90	15	raffica max WS90	58,3	km/h
media gust WS90	32	vento massimo WS90	33,4	km/h
media wind ws 68	17	raffica max ws68	55,4	km/h
media gust ws68	33	vento max ws68	30,4	km/h
media wind vp2 pro	18	raffica max davis vp2	51,5	km/h
media gust vp2 pro	33	vento max davis vp2	30,6	km/h
media wind gw1001	17	raffica max gw1001	51,5	km/h
media gust gw1001	31	vento max gw1001	31,5	km/h



DATI STATISTICI (MEDIE MASSIME MINIME)

vento medio 24H	17,66354167	km/h	vento medio ore di sole	22,8265								
media met pro	14,46180556											
max met pro	17,7											
min met pro	10,8											
media GW1001	14,52673611		scost medio GW1001	0,065385								
max GW1001	17,9		scost max GW1001	0,4								
minima GW1001	10,9		scost min GW1001	-0,1								
media davis vp2 pro	14,41284722		scost medio davis vp2 pro	0,115734								
max davis vp2pro	17,7		scost max davis vp2 pro	0,6								
min davis vp2 pro	10,8		scost min davis vp2 pro	-0,4								
media rad-14	14,471875		scost medio rad-14	-0,02692								
max rad-14	17,6		scost max rad-14	0,1								
min rad-14	10,9		scost min rad-14	-0,1								
media rad-02	14,43506944		scost medio rad-02	-0,02674								
max rad-02	17,6		scost max rad-02	0,1								
min rad-02	10,9		scost min rad-02	-0,1								
media lastem	14,50590278		scost medio lastem	0,045105		media WS80	14,59027778		scost medio WS80	0,12847		
max lastem	17,8		scost max lastem	0,3		max WS80	18		scost max WS80	0,6		
min lastem	10,7		scost min lastem	-0,2		min WS80	10,8		scost min WS80	-0,2		
media davis 7714	14,41284722		scost medio davis 7714	-0,04896		media ws90	14,52673611		scost medio ws90	0,06493		
max davis 7714	17,7		scost max davis 7714	0,1		max ws90	17,9		scost max ws90	0,8		
min davis 7714	10,8		scost min davis 7714	-0,2		min ws90	10,8		scost min ws90	-0,4		